

RECOVERED MONUMENTS								
PT. NO.	OCRS NORTHING	OCRS EASTING	ELEVATION	STATION	OFFSET (- IS LEFT)	DATE	DESCRIPTION	REFERENCE
1112	138009.163	160726.546	-	-	-	4/25/2012	FD. 1 1/4" OD. IRON PIPE 0.2 FT. ABOVE SURFACE GOOD CONDITION	RM2-24
1113	137927.068	160754.008	-	-	-	4/3/2012	FD. 1 1/4" YELLOW PLASTIC CAP STAMPED "R. BROWN PLS 2391" SET FLUSH WITH SURFACE GOOD CONDITION	MI46-14B
1114	138043.722	160531.264	-	-	-	4/3/2012	FD. 1 1/4" YELLOW PLASTIC CAP STAMPED "R. BROWN PLS 2391" SET IN CONCRETE SIDEWALK GOOD CONDITION	MI46-14B
1115	137921.770	160466.870	-	-	-	4/3/2012	FD. 1 1/4" YELLOW PLASTIC CAP STAMPED "R. BROWN PLS 2391" SET FLUSH IN AC. SURFACE ALONG SPRUCE STREET GOOD CONDITION	MI46-14B
1116	137912.447	160484.527	-	-	-	4/2/2012	FD. 1 1/4" YELLOW PLASTIC CAP STAMPED "R. BROWN PLS 2391" SET IN AC. SURFACE GOOD CONDITION	MI46-14B
1117	137678.793	160537.471	-	"WL"26+85.87	-30.16	4/3/2012	FD. 1 1/4" YELLOW PLASTIC CAP STAMPED "R. BROWN PLS 2391" SET FLUSH IN AC. SURFACE GOOD CONDITION	MI46-14B
1118	137632.115	160496.772	-	"WL"26+71.64	30.11	4/3/2012	FD. 5/8" IRON ROD BENT SOUTHERLY TIED WHERE ROD ENTERS GROUND FLUSH WITH SURFACE POOR CONDITION	MI46-14B
1119	137698.088	160371.386	-	"WL"25+29.96	30.23	4/25/2012	FD. 1 1/4" YELLOW PLASTIC CAP STAMPED "R. BROWN PLS 2391" SET FLUSH IN TOP OF CONC. CURB AT SE CORNER OF INTERSECTION OF SPRUCE AND WASHINGTON	MI46-14B
1124	137704.746	160307.083	-	"WL"24+69.97	54.34	4/3/2012	FD. 1 1/4" YELLOW PLASTIC CAP STAMPED "R. BROWN PLS 2391" 0.1 FT BELOW SURFACE GOOD CONDITION	MI46-14B
1125	137815.730	160096.923	-	"WL"22+32.31	54.19	4/26/2012	FD. 1 1/4" YELLOW PLASTIC CAP STAMPED "R. BROWN PLS 2391" 0.2 FT BELOW SURFACE GOOD CONDITION	MI46-14B
1126	137845.118	160022.076	-	"WL"21+52.39	63.10	4/26/2012	FD. 5/8" IRON REBAR BENT SOUTH 0.2 FT ABOVE SURFACE TIED WHERE ROD ENTERS GROUND FAIR CONDITION	MI46-14B
1132	137608.790	160536.056	-	"WL"27+17.27	32.42	4/3/2012	FD. 1 1/4" YELLOW PLASTIC CAP STAMP NOT READABLE FLUSH WITH AC. GOOD CONDITION	MI31-20
1165	137738.823	160358.954	-	"WL"24+99.96	0.00	5/20/2012	FD. 1 1/4" SQUARE HEAD BOLT IN 9 1/2" DIAMETER MONUMENT BOX 1.2 FT BELOW SURFACE AT INTERSECTION OF SPRUCE AND WASHINGTON STREETS	CS 39/85

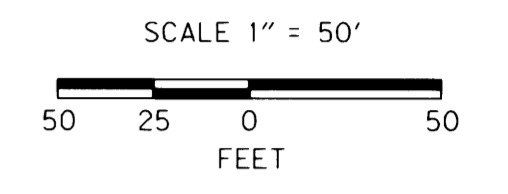
CONTROL MONUMENTS								
PT. NO.	OCRS NORTHING	OCRS EASTING	ELEVATION	STATION	OFFSET (- IS LEFT)	DATE	DESCRIPTION	REFERENCE
9	138072.514	160510.512	449.27	-	-	4/19/2012	SET 5/8" X 30" IRON REBAR WITH A 1 1/2" BRASS CAP STAMPED "ODOT CONTROL 9"	-
13	137747.166	160392.978	456.07	"WL"25+26.17	-23.25	4/19/2012	DESTROYED 1" COPPER DISK STAMPED "ODOT CONTROL 13" FLUSH WITH CONCRETE SIDEWALK	-
13R	137746.214	160403.664	456.56	"WL"25+36.06	-27.39	7/13/2015	SET 1" COPPER DISK STAMPED "ODOT CONTROL 13R" FLUSH WITH CONCRETE SIDEWALK TIED USING 3 POINT RESECTION	-
14	137853.049	160133.802	461.45	"WL"22+47.52	3.97	4/19/2012	SET 5/8" X 30" IRON REBAR WITH A 1 1/2" BRASS CAP STAMPED "ODOT CONTROL 14"	-
525	137859.805	159990.544	449.30	"WL"21+17.65	64.81	11/12/2013	SET 1" COPPER DISK STAMPED "ODOT CONTROL 525" IN CONC. WALK	-
526	137950.028	160214.498	446.60	-	-	11/12/2013	SET 1" COPPER DISK STAMPED "ODOT CONTROL 526" IN CONC. WALK	-

CALCULATED POINTS								
PT. NO.	OCRS NORTHING	OCRS EASTING	ELEVATION	STATION	OFFSET (- IS LEFT)	DATE	DESCRIPTION	REFERENCE
6121	137946.190	160160.083	-	"WL"22+27.33	-90.67	-	RIGHT OF WAY ANGLE POINT SEE DRG. 88-22-1 AND DEED 313-141	-
6122	137908.336	160225.685	-	"WL"23+03.01	-87.79	-	RIGHT OF WAY ANGLE POINT SEE DRG. 88-22-1 AND DEED 313-141	-
6123	137841.657	160300.210	-	"WL"24+00.03	-63.56	-	RIGHT OF WAY ANGLE POINT SEE DRG. 88-22-1 AND DEED 313-141	-
6124	137816.668	160343.517	-	"WL"24+50.00	-61.66	-	RIGHT OF WAY ANGLE POINT SEE DRG. 88-22-1 AND DEED 313-141	-
6125	137751.359	160399.499	-	"WL"25+29.98	-30.00	-	INTERSECTION OF THE RIGHT OF WAY OF PLATTED WASHINGTON ST. AND SPRUCE ST.	-
6126	137698.309	160371.469	-	"WL"25+29.93	30.00	-	INTERSECTION OF THE RIGHT OF WAY OF PLATTED WASHINGTON ST. AND SPRUCE ST.	-
6127	137839.605	160017.450	-	"WL"21+50.87	70.13	-	INTERSECTION OF RIGHT OF WAY OF DRG. 88-22-1 AND DEED 505-562	-
6128	137969.172	159772.100	-	"WL"18+73.41	69.96	-	RIGHT OF WAY OF DRG. 88-22-1 PROJECTED TO THE THREAD OF THE SOUTH UMPQUA RIVER	-
6129	138084.721	159920.007	-	"WL"19+50.35	-101.24	-	RIGHT OF WAY OF DRG. 88-22-1 PROJECTED TO THE THREAD OF THE SOUTH UMPQUA RIVER	-
6141	138049.538	159876.874	-	"WL"19+28.61	-50.00	-	EASEMENT FOR STREET PURPOSES FROM DRG. 88-22-1 PROJECTED TO THE THREAD OF THE SOUTH UMPQUA RIVER	-
6142	137982.663	159789.302	-	"WL"18+82.33	50.00	-	EASEMENT FOR STREET PURPOSES FROM DRG. 88-22-1 PROJECTED TO THE THREAD OF THE SOUTH UMPQUA RIVER	-

NW1/4 Sec 19, T. 27 S., R. 5 W., W.M.  
NE1/4 Sec 24, T. 27 S., R. 6 W., W.M.

FILED  
Date: 9-29-2015 By: *X*  
This survey consist of:  
Map: ST HWY 138-015 A-N  
Narrative:  
Corner Rpt: DOUGLAS COUNTY SURVEYOR

RECORD DATA	
	ODOT R/W DRG. 88-22-1
< >	ORIGINAL PLAT
NO BRACKET	MEASURED/RESOLVED SUPERCEDES RECORD

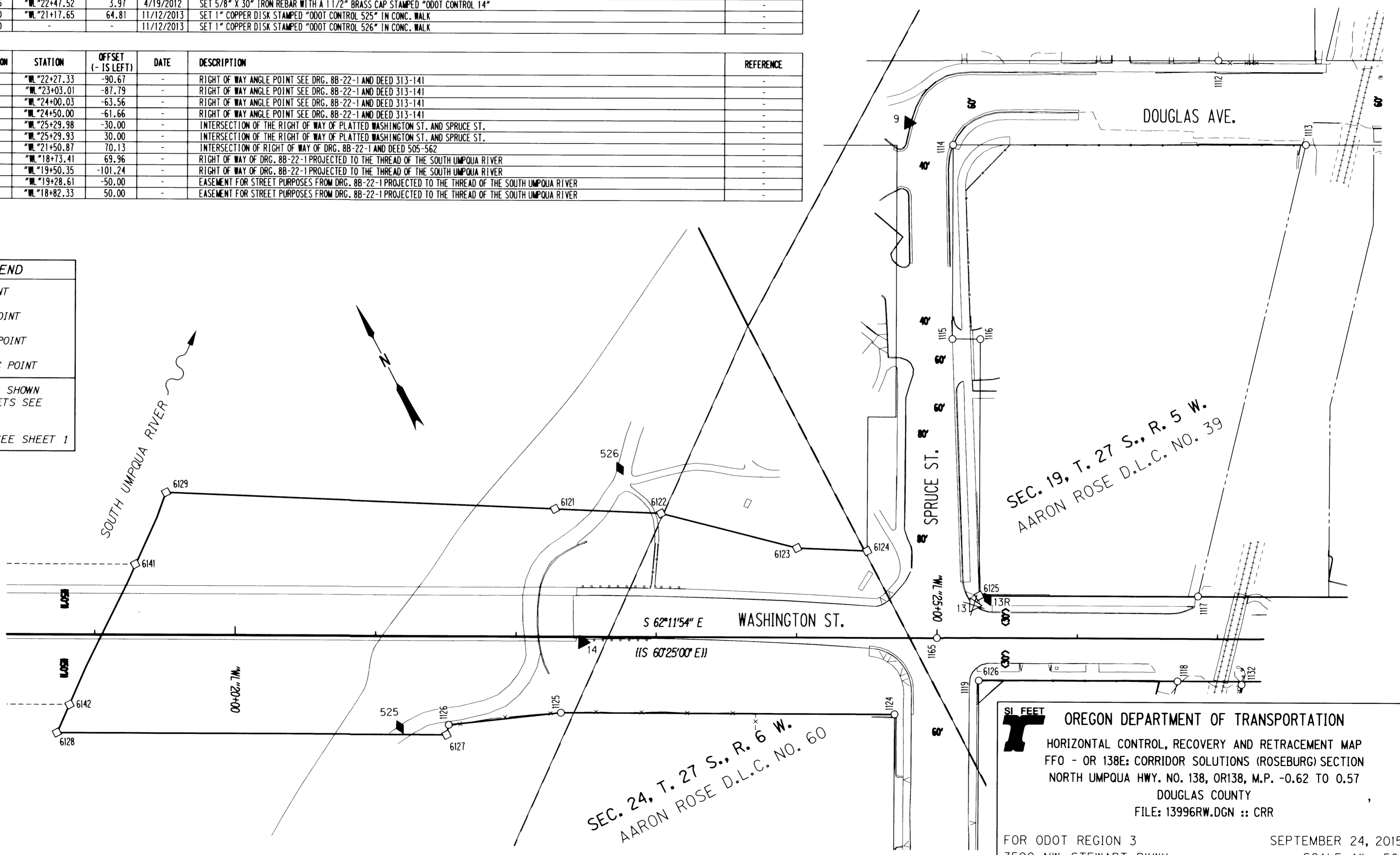


**POINT LEGEND**

- FOUND MONUMENT
- CALCULATED POINT
- ▲ SET NETWORK POINT
- ◆ SET STRATEGIC POINT

FOR MONUMENTS NOT SHOWN ON INDIVIDUAL SHEETS SEE SHEETS 1 AND 2

FOR LINE LEGEND SEE SHEET 1



REGISTERED PROFESSIONAL LAND SURVEYOR  
*Marshall R. Wagstaff*  
OREGON  
JANUARY 9, 2001  
MARSHALL R. WAGSTAFF  
49476  
EXPIRES: 6/30/2016

SI FEET OREGON DEPARTMENT OF TRANSPORTATION  
HORIZONTAL CONTROL, RECOVERY AND RETRACEMENT MAP  
FFO - OR 138E: CORRIDOR SOLUTIONS (ROSEBURG) SECTION  
NORTH UMPQUA HWY. NO. 138, OR138, M.P. -0.62 TO 0.57  
DOUGLAS COUNTY  
FILE: 13996RW.DGN :: CRR  
FOR ODOT REGION 3  
3500 NW. STEWART PKWY.  
ROSEBURG, OR. 97470  
SEPTEMBER 24, 2015  
SCALE: 1" = 50'  
SHEET 14 OF 14

ST. HWY. 138-015 N