

Date: 9-29-2015 By: JC

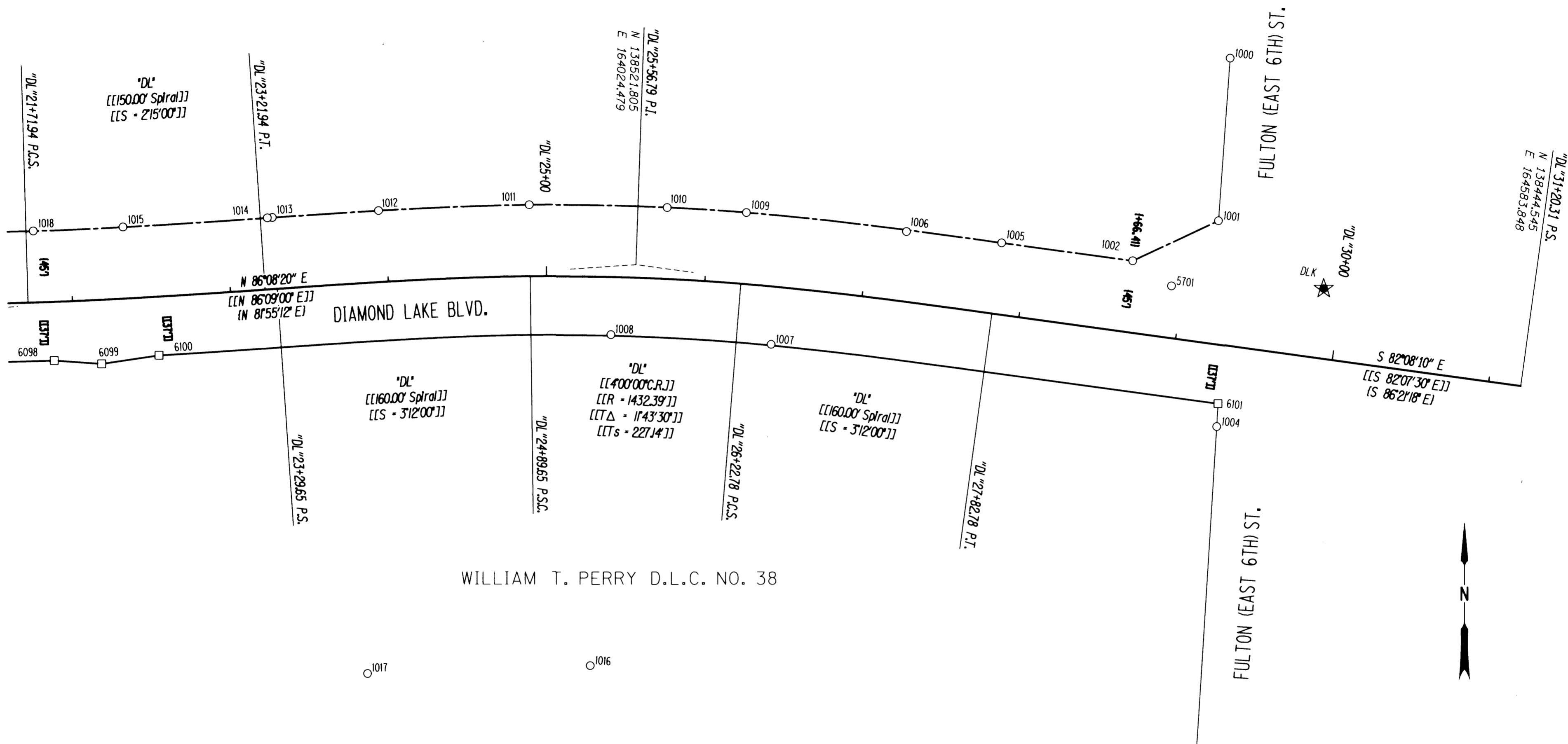
This survey consist of:

Map: . 51 HWY 138-015 A-N

Narrative: _____

Corner Rpt: _____
DOUGLAS COUNTY SURVEYOR

RECORD DATA	
[[]]	ODOT R/W DRG. 6B-21-13
()	ODOT R/W DRG. 1R-3-1731
NO	MEASURED/RESOLVED
BRACKET	SUPERCEDES RECORD



WILLIAM T. PERRY D.L.C. NO. 38



RECOVERED MONUMENTS

PT. NO.	OCCRS	NORTHING	OCCRS EASTING	ELEVATION	STATION	OFFSET (- IS LEFT)	DATE	DESCRIPTION	REFERENCE
1000	138651.531	164400.201	-	-	-	-	3/29/2012	FD. 1 1/4" YELLOW PLASTIC CAP STAMPED "I.E. ENGINEERING" FLUSH WITH AC. GOOD CONDITION	2011-0006A
1001	138548.978	164392.736	-	-	"DL"29+16.71	-77.30	3/29/2012	FD. 1 3/8" BRASS DISK IN CONCRETE SIDEWALK STAMPED "LS 1654"	2011-0006A
1002	138523.877	164338.515	-	-	"DL"28+66.43	-45.02	3/29/2012	FD. 1 1/4" YELLOW PLASTIC CAP STAMPED "I.E. ENGINEERING" 0.1 FT BELOW LAWN SURFACE GOOD CONDITION	2011-0006A
1004	138419.086	164391.532	-	-	"DL"29+33.29	51.53	3/29/2012	FD. 1 3/8" BRASS DISK IN CONCRETE SIDEWALK AT SW CORNER OF FULTON ST. AND DIAMOND LAKE BLVD. GOOD CONDITION	M161-27
1005	138535.261	164255.649	-	-	"DL"27+82.79	-44.96	3/29/2012	FD. 1 1/4" YELLOW PLASTIC CAP STAMPED "I.E. ENGINEERING" FLUSH WITH SURFACE GOOD CONDITION	2011-0006A
1006	138542.418	164195.515	-	-	"DL"27+22.59	-43.98	3/29/2012	FD. 1 1/4" YELLOW PLASTIC CAP STAMPED "I.E. ENGINEERING" FLUSH WITH SURFACE GOOD CONDITION	2011-0006A
1007	138471.464	164109.868	-	-	"DL"26+45.59	36.34	3/29/2012	FD. 1 1/4" YELLOW PLASTIC CAP STAMPED "I.E. ENGINEERING" FLUSH WITH A.C. GOOD CONDITION	M161-27
1008	138477.596	164008.585	-	-	"DL"25+41.50	36.38	3/29/2012	FD. 2" X 2" RR STEEL I-BEAM BENT BADLY WEST TIED WHERE ENTERS GROUND 0.1 FT BELOW SURFACE POOR CONDITION	M38-55
1009	138554.503	164094.259	-	-	"DL"26+22.74	-44.99	3/29/2012	FD. 1 1/4" YELLOW PLASTIC CAP STAMPED "I.E. ENGINEERING" 0.3 FT BELOW SURFACE GOOD CONDITION	VOL. 21 PG. 16A
1010	138557.713	164044.216	-	-	"DL"25+74.12	-44.97	3/29/2012	FD. 1 1/4" YELLOW PLASTIC CAP STAMPED "I.E. ENGINEERING" 0.5 FT BELOW SURFACE GOOD CONDITION	VOL. 21 PG. 16A
1011	138559.339	163957.052	-	-	"DL"24+89.59	-45.03	3/29/2012	FD. 5/8" IRON REBAR THAT PROTRUDES THROUGH YELLOW PLASTIC CAP FLUSH WITH SURFACE GOOD CONDITION	VOL. 21 PG. 16A
1012	138555.770	163861.856	-	-	"DL"23+96.39	-45.06	3/29/2012	FD. 5/8" IRON REBAR WITH 1 1/4" YELLOW PLASTIC CAP STAMPED "LAND MARK PLS 2287" 0.6 FT ABOVE SURFACE GOOD CONDITION	2009-0044A
1013	138551.469	163794.743	-	-	"DL"23+29.58	-45.07	3/29/2012	FD. 1 1/4" YELLOW PLASTIC CAP STAMPED "I.E. ENGINEERING" 0.1 FT BELOW SURFACE GOOD CONDITION	VOL. 21 PG. 16A
1014	138551.242	163791.634	-	-	"DL"23+26.46	-45.05	3/29/2012	FD. 1 1/4" YELLOW PLASTIC CAP STAMPED "I.E. ENGINEERING" FLUSH WITH SURFACE GOOD CONDITION	VOL. 21 PG. 16A
1015	138545.513	163700.436	-	-	"DL"22+34.48	-45.09	3/29/2012	FD. 5/8" IRON REBAR WITH 1 1/4" YELLOW PLASTIC CAP STAMPED "PLS 2287 LAND MARK" 0.7 FT ABOVE SURFACE GOOD CONDITION	2009-0044A
1016	138268.599	163995.402	-	-	-	-	3/29/2012	FD. 1 1/4" YELLOW PLASTIC CAP STAMPED "I.E. ENGINEERING" 0.2 FT BELOW SURFACE GOOD CONDITION	M155-27
1017	138263.421	163854.724	-	-	-	-	3/29/2012	FD. 1 1/4" YELLOW PLASTIC CAP STAMPED "I.E. ENGINEERING" 0.1 FT BELOW SURFACE GOOD CONDITION	M155-27
5701	138507.972	164363.027	-	-	"DL"28+92.89	-32.62	3/29/2012	FD. 3" DIA. BRASS DISK IN TOP OF CONCRETE CURB STAMPED "CITY OF ROSEBURG 57-1" GOOD CONDITION	CS 66/57

CONTROL MONUMENTS

PT. NO.	OCCRS	NORTHING	OCCRS EASTING	ELEVATION	STATION	OFFSET (- IS LEFT)	DATE	DESCRIPTION	REFERENCE
DLK	138506.017	164459.265	462.53	462.53	"DL"29+88.49	-43.85	4/18/2012	SET 1" COPPER DISK STAMPED "ODOT CONTROL DLK" IN NEW CONCRETE SIDEWALK	-

CALCULATED POINTS

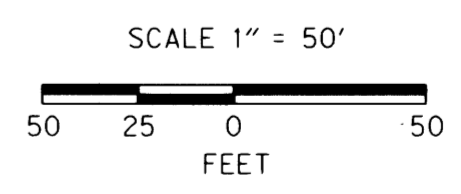
PT. NO.	OCCRS	NORTHING	OCCRS EASTING	ELEVATION	STATION	OFFSET (- IS LEFT)	DATE	DESCRIPTION	REFERENCE
6099	138459.178	163686.927	-	-	"DL"22+16.57	40.44	-	RIGHT OF WAY ANGLE POINT IN OLD STREET SEE DRG. 6B-21-13	-
6100	138464.582	163723.181	-	-	"DL"22+52.64	37.00	-	INTERSECTION OF RIGHT OF WAY OF OLD STREET AND DRG. 6B-21-13	-
6101	138433.630	164392.450	-	-	"DL"29+32.21	37.00	-	INTERSECTION OF RIGHT OF WAY OF FULTON ST. AND DRG. 6B-21-13	-

POINT LEGEND

- FOUND MONUMENT
- CALCULATED POINT
- ★ SET GPS STATION

FOR MONUMENTS NOT SHOWN ON INDIVIDUAL SHEETS SEE SHEETS 1 AND 2

FOR LINE LEGEND SEE SHEET 1



REGISTERED PROFESSIONAL LAND SURVEYOR

Marshall R. Wagstaff

OREGON
JANUARY 9, 2001
MARSHALL R. WAGSTAFF
49476
EXPIRES: 6/30/2016

SI FEET OREGON DEPARTMENT OF TRANSPORTATION

HORIZONTAL CONTROL, RECOVERY AND RETRACEMENT MAP
FFO - OR 138E: CORRIDOR SOLUTIONS (ROSEBURG) SECTION
NORTH UMPQUA HWY. NO. 138, OR138, M.P. -0.62 TO 0.57
DOUGLAS COUNTY
FILE: 13996RW.DGN :: CRR

FOR ODOT REGION 3
3500 NW. STEWART PKWY.
ROSEBURG, OR. 97470

SEPTEMBER 24, 2015
SCALE: 1" = 50'
SHEET 11 OF 14