

Date: 9-29-2015 By: XC

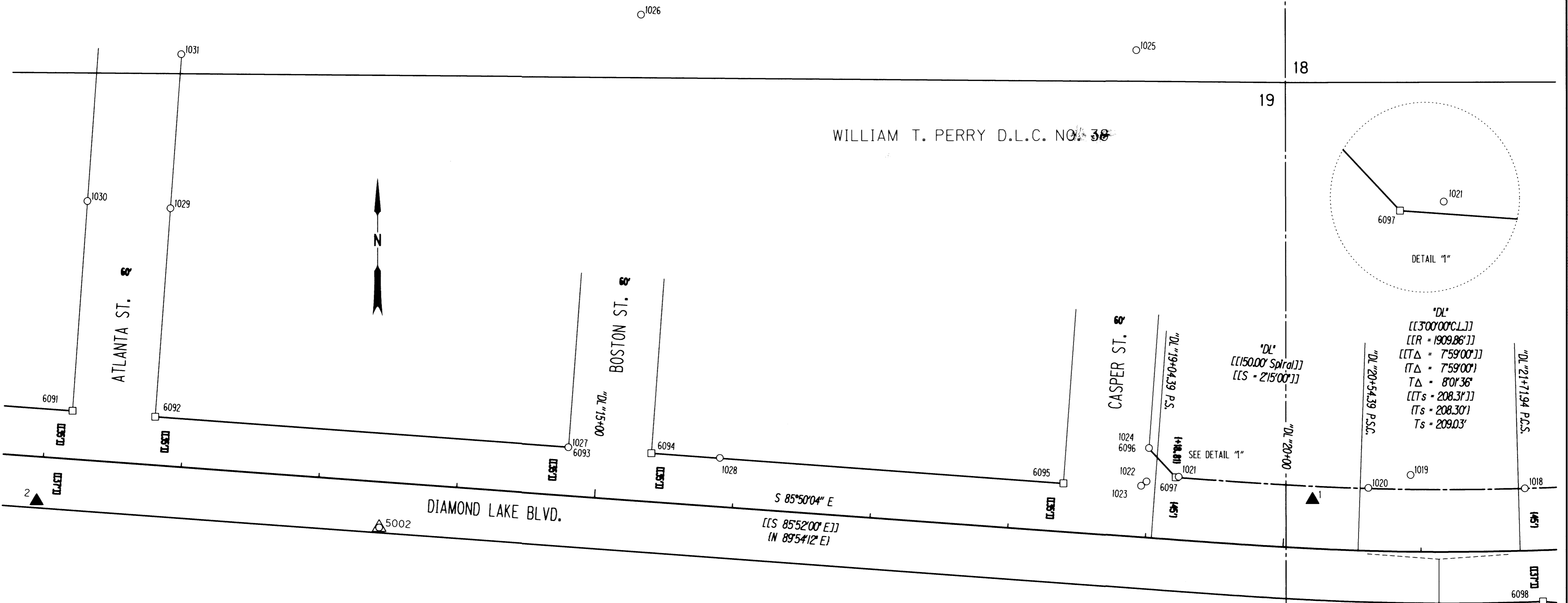
This survey consist of:

Map: ST HWY 138-015 A-N

Narrative:

Corner Rpt: DOUGLAS COUNTY SURVEYOR

RECORD DATA	
[[]]	ODOT R/W DRG. 68-21-13
[]	ODOT R/W DRG. 1R-3-1731
NO BRACKET	MEASURED/RESOLVED SUPERCEDES RECORD

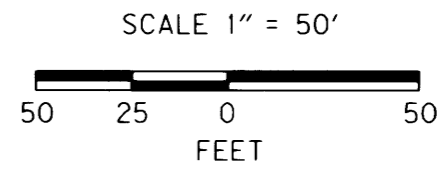


REGISTERED PROFESSIONAL LAND SURVEYOR

Marshall R. Wagstaff

OREGON JANUARY 9, 2001 MARSHALL R. WAGSTAFF 49476

EXPIRES: 6/30/2016



RECOVERED MONUMENTS FOR CALCULATED POINTS SEE SHEET 9

PT. NO.	OCRS	NORTHING	OCRS EASTING	ELEVATION	STATION	OFFSET (- IS LEFT)	DATE	DESCRIPTION	REFERENCE
1018	138543.064	163643.732	-	-	"DL" 21+76.66	-45.10	3/29/2012	FD. 1 1/4" YELLOW PLASTIC CAP STAMPED "I.E. ENGINEERING" 0.2 FT BELOW SURFACE GOOD CONDITION	VOL. 21 PG. 16A
1019	138552.706	163560.923	-	-	"DL" 20+91.70	-55.43	3/30/2012	FD. 1 1/4" YELLOW PLASTIC CAP STAMPED "LAND MARK 2287" 0.2 FT BELOW SURFACE GOOD CONDITION	2005-0065
1020	138543.415	163530.293	-	-	"DL" 20+60.45	-45.47	3/30/2012	FD. 1 1/4" YELLOW PLASTIC CAP STAMPED "I.E. ENGINEERING" 0.1 FT BELOW SURFACE GOOD CONDITION	VOL. 21 PG. 16A
1021	138551.363	163392.879	-	-	"DL" 19+20.89	-45.58	3/30/2012	FD. 5/8" IRON REBAR WITH A 1 1/4" YELLOW PLASTIC CAP STAMPED "I.E. ENGINEERING" 0.30 FT ABOVE SURFACE GOOD CONDITION	VOL. 21 PG. 16A
1022	138547.972	163369.656	-	-	"DL" 18+97.95	-40.51	3/30/2012	FD. 1 1/4" YELLOW PLASTIC CAP STAMPED "LAND MARK PLS 2287" FLUSH WITH SURFACE GOOD CONDITION	M137-34
1023	138544.860	163365.724	-	-	"DL" 18+94.26	-37.12	3/30/2012	FD. 1 3/8" BRASS DISK IN TOP OF CONCRETE CURB AT NE CORNER OF CASPER ST. AND DIAMOND LAKE BLVD. STAMPED "NECS 1998" FLUSH WITH CURB GOOD CONDITION	CS 66/57
1024	138572.056	163371.402	-	-	"DL" 18+97.94	-64.66	3/30/2012	FD. 1 1/4" YELLOW PLASTIC CAP STAMPED "I.E. ENGINEERING" 0.4 FT BELOW SURFACE GOOD CONDITION	VOL. 21 PG. 16A
1025	138859.561	163362.302	-	-	-	-	4/2/2012	FD. 1 1/4" BRASS DISK SET ON 8"x8" CONCRETE PEDESTAL STAMPED WITH CHISELED X HAD THRU 8" DIAMETER MONUMENT BOX AT INTERSECTION OF CASPER ST. AND ODELL AVENUE.	M92-7
1026	138885.618	163003.594	-	-	-	-	4/1/2012	FD. 2" BRASS DISK STAMPED "X" IN AN 8" MONUMENT BOX DISK IS 1.0 FT BELOW AC. AT INTERSECTION OF BOSTON AND ODELL AVENUES	M92-7
1027	138572.886	162950.780	-	-	"DL" 14+78.37	-34.94	4/24/2012	FD. 2" BRASS DISK STAMPED "LS 2287" FLUSH WITH SIDEWALK AT CORNER OF BUILDING AT CORNER OF BOSTON AND DIAMOND LAKE BLVD. GOOD CONDITION	M127-21
1028	138565.185	163060.523	-	-	"DL" 15+88.39	-35.23	3/30/2012	FD. 1" X 1" SQUARE TOPPED ROD FLUSH WITH CONCRETE APPROACH GOOD CONDITION	M25-45
1029	138745.639	162662.905	-	-	-	-	4/24/2012	FD. 1 1/4" YELLOW PLASTIC CAP STAMPED "AA SURVEYING" 0.2' ABOVE SURFACE GOOD CONDITION	M127-21
1030	138750.828	162602.820	-	-	-	-	3/30/2012	FD. 5/8" IRON REBAR 0.2 FT. BELOW GRAVEL SURFACE GOOD CONDITION	M127-21
1031	138856.996	162670.802	-	-	-	-	3/30/2012	FD. 1 1/4" YELLOW PLASTIC CAP STAMPED "AA SURVEYING" FLUSH WITH SURFACE GOOD CONDITION	M127-21

CONTROL MONUMENTS

PT. NO.	OCRS	NORTHING	OCRS EASTING	ELEVATION	STATION	OFFSET (- IS LEFT)	DATE	DESCRIPTION	REFERENCE
1	138534.804	163489.906	456.56	-	"DL" 20+19.66	-35.23	4/18/2012	SET 1" COPPER DISK STAMPED "ODOT CONTROL 1" FLUSH WITH CONCRETE SIDEWALK	-
5002	138514.574	162813.936	451.59	-	"DL" 13+46.13	33.16	3/30/2012	FD. 2 1/2" BRASS DISK STAMPING IS UNREADABLE FLUSH WITH CONCRETE WALK IN APPROACH TO MESSENGER'S AUTO BODY	CS 66/57

POINT LEGEND

- FOUND MONUMENT
- CALCULATED POINT
- ▲ SET NETWORK POINT
- △ FOUND MONUMENT USED AS NETWORK POINT

FOR MONUMENTS NOT SHOWN ON INDIVIDUAL SHEETS SEE SHEETS 1 AND 2
FOR LINE LEGEND SEE SHEET 1

SI FEET OREGON DEPARTMENT OF TRANSPORTATION
HORIZONTAL CONTROL, RECOVERY AND RETRACEMENT MAP
FFO - OR 138E: CORRIDOR SOLUTIONS (ROSEBURG) SECTION
NORTH UMPQUA HWY. NO. 138, OR138, M.P. -0.62 TO 0.57
DOUGLAS COUNTY
FILE: 13996RW.DGN :: CRR

FOR ODOT REGION 3
3500 NW. STEWART PKWY.
ROSEBURG, OR. 97470
SEPTEMBER 24, 2015
SCALE: 1" = 50'
SHEET 10 OF 14