

SW1/4 Sec 18 & NW1/4 Sec 19, T. 27 S., R. 5 W., W.M.

FILED

Date: 9-29-2015 By: X

This survey consist of:

Map: 2T HWY 138-015 A-N

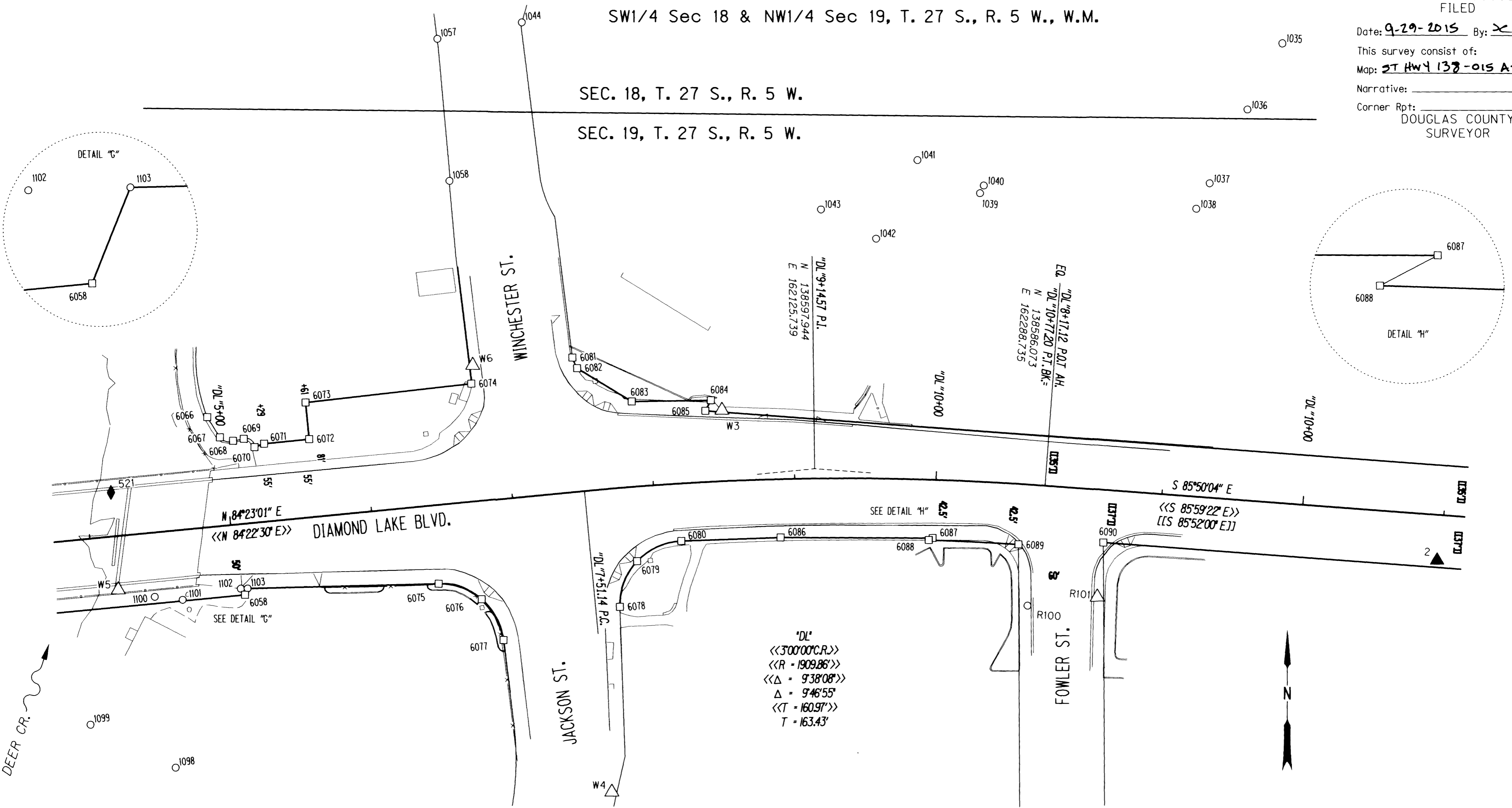
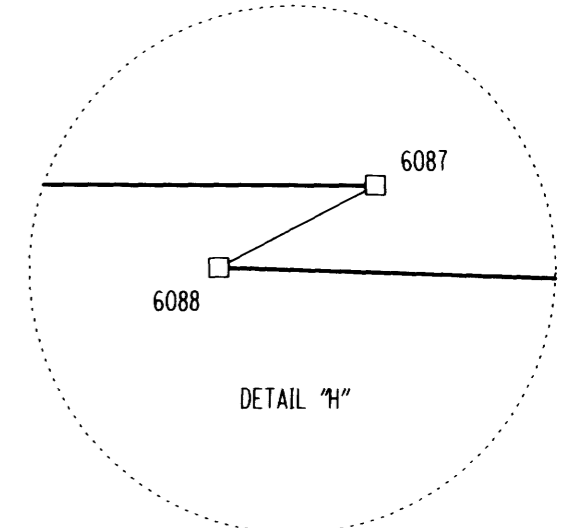
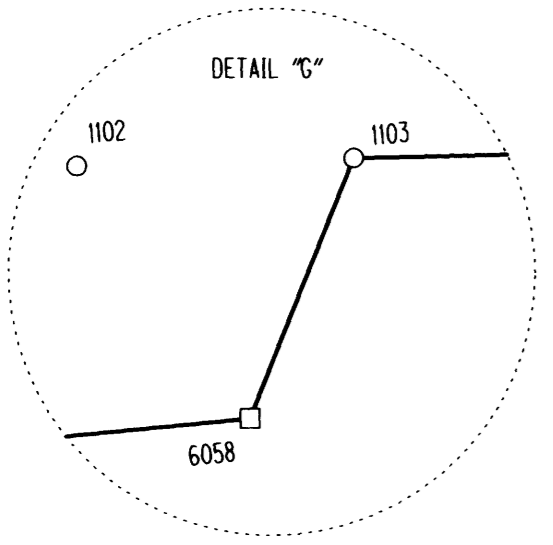
Narrative:

Corner Rpt:

DOUGLAS COUNTY SURVEYOR

SEC. 18, T. 27 S., R. 5 W.

SEC. 19, T. 27 S., R. 5 W.



"DL"  
 <<300'00' C.R.>>  
 <<R = 1909.88'>>  
 <<Δ = 938'08'>>  
 Δ = 946'55"  
 <<T = 160.97'>>  
 T = 163.43'

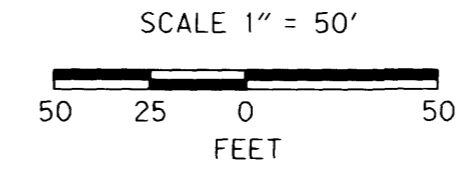
RECOVERED MONUMENTS

PT. NO.	OCRS NORTHING	OCRS EASTING	ELEVATION	STATION	OFFSET (- IS LEFT)	DATE	DESCRIPTION	REFERENCE
1035	138897.874	162456.359	-	-	-	3/30/2012	FD. 1 1/4" YELLOW PLASTIC CAP STAMPED "I.E. ENG" 0.4 FT BELOW SURFACE GOOD CONDITION	M131-48
1036	138851.437	162431.615	-	-	-	3/30/2012	FD. 5/8" IRON REBAR 0.3 FT BELOW SURFACE GOOD CONDITION	M58-53
1037	138799.322	162404.910	-	-	-	3/30/2012	FD. 1 1/4" YELLOW PLASTIC CAP STAMPED "I.E. ENG" FLUSH WITH SURFACE GOOD CONDITION	M131-48
1038	138781.309	162395.462	-	-	-	3/30/2012	FD. 1 1/4" YELLOW PLASTIC CAP STAMPED "I.E. ENG" 0.05 FT ABOVE SURFACE GOOD CONDITION	M131-48
1039	138792.357	162242.493	-	-	-	3/30/2012	FD. 1 1/4" YELLOW PLASTIC CAP STAMPED "I.E. ENG" 0.4 FT BELOW SURFACE GOOD CONDITION	M131-48
1040	138797.783	162245.134	-	-	-	3/30/2012	FD. 5/8" IRON REBAR 0.8 FT BELOW SURFACE GOOD CONDITION	M58-53
1041	138815.673	162198.229	-	-	-	4/24/2012	FD. 1 1/4" YELLOW PLASTIC CAP STAMPED "I.E. ENG" FLUSH WITH SURFACE GOOD CONDITION	M131-48
1042	138760.235	162168.992	-	-	-	3/30/2012	FD. 1 1/4" YELLOW PLASTIC CAP STAMPING UNREADABLE FLUSH WITH A.C GOOD CONDITION	M131-48
1043	138780.801	162130.074	-	-	-	4/24/2012	FD. 1 1/4" YELLOW PLASTIC CAP STAMPED "I.E. ENG" FLUSH WITH SURFACE GOOD CONDITION	M131-48
1044	138912.058	161918.625	-	-	-	4/24/2012	FD. MAG NAIL IN CONC. SIDEWALK FLUSH AT NW CORNER NEWS REVIEW BLDG GOOD CONDITION	M131-48
1057	138900.215	161859.028	-	-	-	4/24/2012	FD. 1 1/4" YELLOW PLASTIC CAP STAMPED "I.E. ENGINEERING" FLUSH WITH SURFACE GOOD CONDITION	M142-49
1058	138800.501	161867.539	-	-	-	4/2/2012	FD. 1 1/4" YELLOW PLASTIC CAP STAMPED "I.E. ENGINEERING" FLUSH WITH SURFACE GOOD CONDITION	M142-49
1098	138386.074	161674.583	-	-	-	4/26/2012	FD. 5/8" IRON REBAR 0.4 FT. BELOW SURFACE GOOD CONDITION	M52-33
1100	138506.624	161659.628	-	"DL"4+41.76	45.26	4/25/2012	FD. 3/4" IRON ROD BENT BADLY WEST TIED WHERE ROD ENTERS GROUND 1.0 FT BELOW SURFACE POOR CONDITION	M23-21
1101	138504.574	161679.343	-	"DL"4+61.18	49.23	4/25/2012	FD. 3/4" IRON ROD BENT BADLY NORTH TIED WHERE ROD ENTERS GROUND 0.5 FT BELOW SURFACE POOR CONDITION	M52-33
1102	138512.510	161720.421	-	"DL"5+02.83	45.36	4/25/2012	FD. 1" COPPER DISK STAMPED "ODOT CONTROL 3" FLUSH WITH SURFACE GOOD CONDITION AT BACK OF CONCRETE WALK	M52-33
1103	138512.654	161725.232	-	"DL"5+07.64	45.68	4/25/2012	FD. 5/8" IRON REBAR FLUSH WITH SURFACE GOOD CONDITION AT BACK OF CONCRETE WALK	M52-33
R100	138501.533	162276.423	-	"DL"10+70.78	85.20	4/26/2012	FD. 1" COPPER DISK STAMPED "ODOT CONTROL 100" FLUSH IN CONCRETE SIDEWALK GOOD CONDITION	ST. HWY. 138-008

CONTROL MONUMENTS

PT. NO.	OCRS NORTHING	OCRS EASTING	ELEVATION	STATION	OFFSET (- IS LEFT)	DATE	DESCRIPTION	REFERENCE
2	138533.725	162566.025	450.05	"DL"10+97.48	32.07	4/18/2012	SET 1" COPPER DISK STAMPED "ODOT CONTROL 2" FLUSH WITH CONCRETE SIDEWALK	-
521	138580.062	161628.617	-	"DL"4+18.08	-30.86	6/11/2012	SET 1" COPPER DISK STAMPED "ODOT CONTROL 521" IN CONC. SLAB	-
R101	138507.534	162325.737	448.61	"DL"8+59.73	75.64	4/18/2012	FD. 1" COPPER DISK STAMPED "ODOT CONTROL 101" FLUSH WITH CONCRETE SIDEWALK GOOD CONDITION	ST. HWY. 138-008
W3	138639.127	162060.224	449.08	"DL"8+50.83	-50.07	3/30/2012	FD. 1" COPPER DISK STAMPED "ODOT CONTROL 3" FLUSH WITH CONCRETE SIDEWALK GOOD CONDITION	ST. HWY. 138-006
W4	138369.678	161982.898	449.04	-	-	4/18/2012	FD. 1" COPPER DISK STAMPED "ODOT CONTROL 4" FLUSH WITH CONCRETE SIDEWALK GOOD CONDITION	ST. HWY. 138-006
W6	138670.390	161884.076	448.86	"DL"6+81.15	-95.75	4/2/2012	FD. 1" COPPER DISK STAMPED "ODOT CONTROL 6" FLUSH WITH CONCRETE SIDEWALK GOOD CONDITION	ST. HWY. 138-006

FOR CALCULATED POINTS SEE SHEET 9



POINT LEGEND

- FOUND MONUMENT
- CALCULATED POINT
- △ FOUND NETWORK POINT
- ▲ SET NETWORK POINT
- ◆ SET STRATEGIC POINT

FOR MONUMENTS NOT SHOWN ON INDIVIDUAL SHEETS SEE SHEETS 1 AND 2  
 FOR LINE LEGEND SEE SHEET 1

RECORD DATA

[[ ]] ODOT R/W DRG. 6B-21-13  
 << >> COUNTY ROAD PLAN: SC09 1969-008  
 NO MEASURED/RESOLVED BRACKET SUPERCEDES RECORD

REGISTERED PROFESSIONAL LAND SURVEYOR  
 Marshall R. Wagstaff  
 OREGON JANUARY 9, 2001  
 MARSHALL R. WAGSTAFF 49476  
 EXPIRES: 6/30/2016

SI FEET OREGON DEPARTMENT OF TRANSPORTATION  
 HORIZONTAL CONTROL, RECOVERY AND RETRACEMENT MAP  
 FFO - OR 138E: CORRIDOR SOLUTIONS (ROSEBURG) SECTION  
 NORTH UMPQUA HWY. NO. 138, OR138, M.P. -0.62 TO 0.57  
 DOUGLAS COUNTY  
 FILE: 13996RW.DGN :: CRR

FOR ODOT REGION 3 SEPTEMBER 24, 2015  
 3500 NW STEWART PKWY. SCALE: 1" = 50'  
 ROSEBURG, OR. 97470 SHEET 8 OF 14

ST. HWY. 138-015 H