

SW1/4 Sec 18, T. 27 S., R. 5 W., W.M.

FILED

Date: 9-29-2015 By: JC

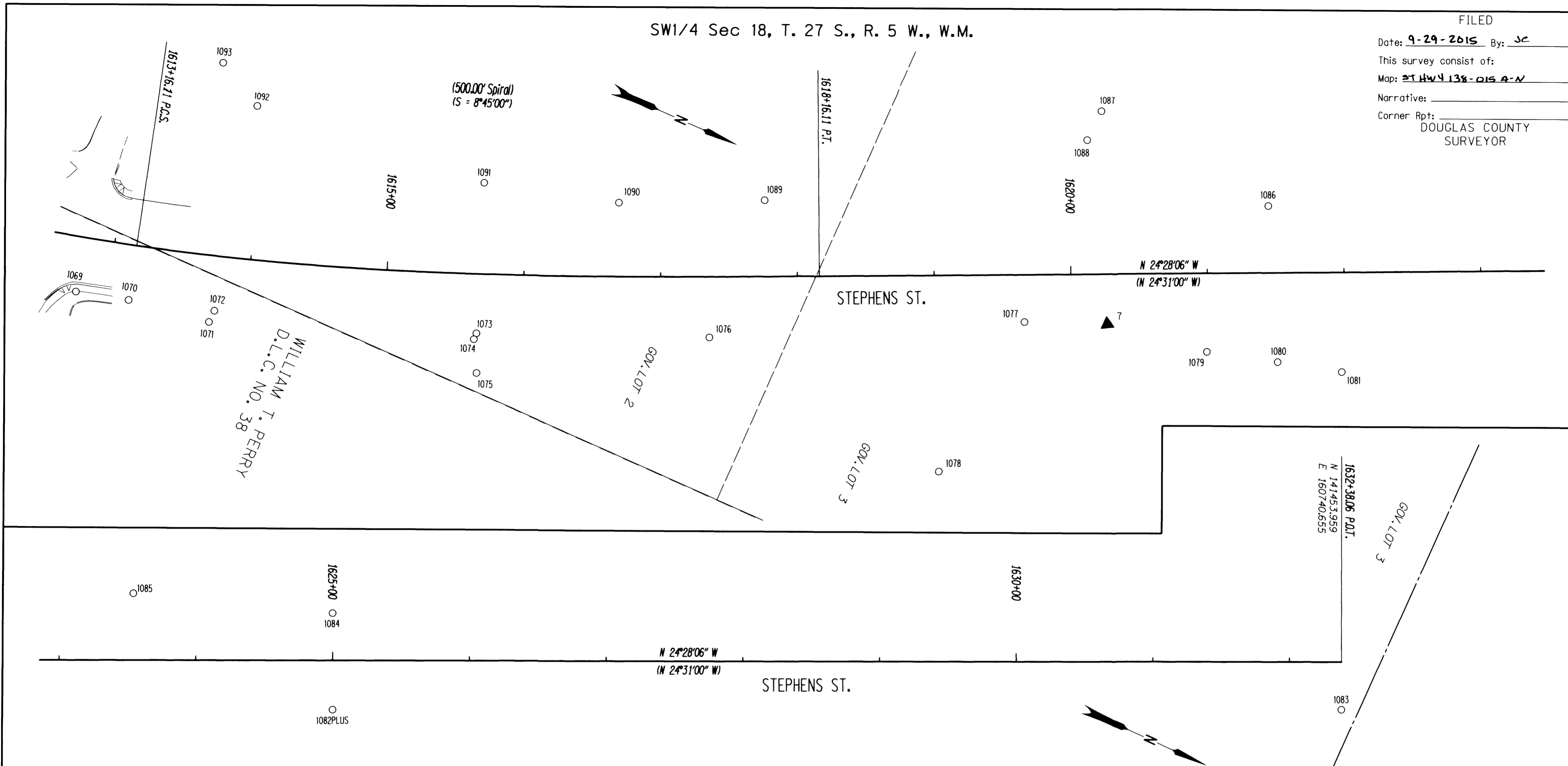
This survey consist of:

Map: ST HWY 138-015 G-N

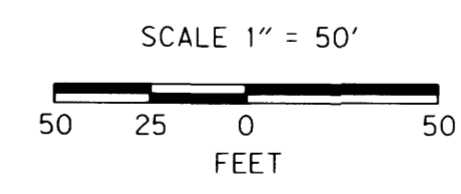
Narrative:

Corner Rpt:

DOUGLAS COUNTY SURVEYOR



RECOVERED MONUMENTS									
PT. NO.	OCRS NORTHING	OCRS EASTING	ELEVATION	STATION	OFFSET (- IS LEFT)	DATE	DESCRIPTION	REFERENCE	
1071	139765.927	161542.523	-	1613+74.64	48.53	4/2/2012	FD. 5/8" IRON REBAR 0.2 FT BELOW SURFACE GOOD CONDITION	M6-70	
1072	139766.219	161533.444	-	1613+77.61	39.97	4/2/2012	FD. 1 1/4" YELLOW PLASTIC CAP STAMPED "I.E. ENG." FLUSH WITH SURFACE GOOD CONDITION	M131-33	
1073	139947.850	161470.191	-	1615+66.66	43.39	4/2/2012	FD. 5/8" IRON REBAR 0.4 FT BELOW SURFACE GOOD CONDITION	CS 55/126	
1074	139947.914	161474.923	-	1615+64.95	47.80	4/2/2012	FD. 5/8" IRON REBAR 0.3 FT BELOW SURFACE FAIR CONDITION	CS 55/126	
1075	139959.685	161496.677	-	1615+67.55	72.39	4/2/2012	FD. 5/8" IRON REBAR BENT SOUTHERLY TIED WHERE ENTERS GROUND POOR CONDITION	CS 55/126	
1076	140104.568	161403.228	-	1617+35.60	44.27	4/25/2012	FD. 1 1/2" OD. IRON PIPE 0.2 FT ABOVE SURFACE GOOD CONDITION OLD LOOKING	M143-1	
1077	140310.346	161298.956	-	1619+65.91	34.49	4/2/2012	FD. 2" BRASS DISK FLUSH IN CONCRETE STAMPED "49-3" GOOD CONDITION	CS 66/57	
1078	140297.724	161424.127	-	1619+02.58	143.19	4/25/2012	FD. 1/2" IRON REBAR 0.4 FT BELOW SURFACE GOOD CONDITION AT BACK OF CONCRETE SIDEWALK	M59-5	
1079	140441.276	161264.597	-	1620+99.32	57.45	4/2/2012	FD. 5/8" IRON ROD WITH 1 1/2" ALUM. CAP STAMPED "OREG. STATE HWY. DEPT." 0.4 FT BELOW SURFACE TIED WHERE ENTERS GROUND POOR CONDITION	DRG 58-5-21A	
1080	140491.512	161250.204	-	1621+51.00	65.15	4/2/2012	FD. 5/8" IRON ROD WITH 1 1/2" ALUM. CAP STAMPED "1621+51.05" FLUSH WITH SURFACE TIED WHERE ENTERS GROUND POOR CONDITION	DRG 58-5-21A	
1081	140537.377	161237.685	-	1621+97.93	72.75	4/25/2012	FD. 5/8" IRON REBAR BENT NE. 0.3 FT BELOW SURFACE TIED WHERE ROD ENTERS GROUND POOR CONDITION	M89-14	
1082PLUS	140797.141	161079.082	-	1625+00.06	35.99	4/2/2012	FD. 2 3/4" BRASS DISK STAMPED "STATE HIGHWAY DEPARTMENT REFERENCE RP POT STA. 1625+00 35.9 RT." FLUSH WITH CONCRETE SIDEWALK GOOD CONDITION (TIED ON THE PLUS MARK)	DRG 58-5-21A	
1083	141468.373	160772.330	-	1632+38.06	34.80	4/2/2012	FD. 2 3/4" BRASS DISK STAMPED "STATE HIGHWAY DEPARTMENT REFERENCE RP EQ. 34.80 RT." FLUSH WITH CONCRETE SIDEWALK GOOD CONDITION	DRG 58-5-21A	
1084	140767.783	161014.849	-	1624+99.94	-34.64	4/2/2012	FD. 2 3/4" BRASS DISK STAMPED "STATE HIGHWAY DEPARTMENT REFERENCE RP POT STA. 1625+00 34.70 LT." FLUSH WITH CONCRETE SIDEWALK GOOD CONDITION	DRG 58-5-21A	
1085	140629.335	161062.180	-	1623+54.32	-48.90	4/25/2012	FD. 1 1/4" YELLOW PLASTIC CAP STAMPED "AND MAR PLS 2287" CAP DAMAGED FULL STAMPING NOT READABLE FLUSH SURFACE FAIR CONDITION	M151-36	
1086	140438.725	161148.996	-	1621+44.87	-48.83	4/25/2012	FD. 1 1/4" YELLOW PLASTIC CAP STAMPED "LAND MARK PLS 2287" 0.2 FT ABOVE SURFACE GOOD CONDITION	M151-36	
1087	140298.954	161135.351	-	-	-	4/25/2012	FD. 1 1/4" YELLOW PLASTIC CAP STAMPED "LAND MARK PLS 2287" 0.1 FT ABOVE SURFACE GOOD CONDITION	M151-36	
1088	140298.138	161159.014	-	1620+12.76	-97.94	4/25/2012	FD. 5/8" IRON ROD 0.2 FT. BELOW SURFACE GOOD CONDITION	M151-36	
1089	140100.559	161295.310	-	1617+76.42	-55.71	4/2/2012	FD. 1" SMOOTH IRON ROD 0.5 FT. BELOW SURFACE GOOD CONDITION	M24-50	
1090	140003.924	161340.392	-	1616+69.13	-54.07	4/2/2012	FD. 3/4" IRON ROD LEANS SOUTHERLY 0.3 FT ABOVE SURFACE FAIR CONDITION	M24-61	
1091	139908.275	161367.544	-	1615+69.03	-66.59	4/2/2012	FD. 5/8" SMOOTH IRON ROD 0.4 FT BELOW SURFACE TIED WHERE ENTERS GROUND POOR CONDITION	M24-61	
1092	139733.843	161383.943	-	-	-	4/2/2012	FD. 5/8" IRON ROD WITH 1 1/2" YELLOW PLASTIC CAP STAMPED "STRATTON LS 1111" 0.1 FT ABOVE SURFACE GOOD CONDITION	M127-57	
1093	139698.350	161365.590	-	-	-	4/2/2012	FD. 5/8" IRON ROD BENT NORTHERLY TIED WHERE ENTERS GROUND 0.2 FT BELOW SURFACE POOR CONDITION	M127-57	
CONTROL MONUMENT									
PT. NO.	OCRS NORTHING	OCRS EASTING	ELEVATION	STATION	OFFSET (- IS LEFT)	DATE	DESCRIPTION	REFERENCE	
7	140366.339	161275.639	535.09	1620+26.54	36.46	4/18/2012	SET 1" COPPER DISK STAMPED "ODOT CONTROL 7" FLUSH WITH CONCRETE SIDEWALK		



RECORD DATA	
()	ODOT R/W DRG. 58-5-21A
NO	MEASURED/RESOLVED
BRACKET	SUPERCEDES RECORD

REGISTERED PROFESSIONAL LAND SURVEYOR
Marshall R. Wagstaff
 OREGON
 JANUARY 9, 2001
 MARSHALL R. WAGSTAFF
 49476
 EXPIRES: 6/30/2016

POINT LEGEND

○ FOUND MONUMENT

▲ SET NETWORK POINT

FOR MONUMENTS NOT SHOWN ON INDIVIDUAL SHEETS SEE SHEETS 1 AND 2

FOR LINE LEGEND SEE SHEET 1

SI FEET OREGON DEPARTMENT OF TRANSPORTATION

HORIZONTAL CONTROL, RECOVERY AND RETRACEMENT MAP
 FFO - OR 138E: CORRIDOR SOLUTIONS (ROSEBURG) SECTION
 NORTH UMPQUA HWY. NO. 138, OR138, M.P. -0.62 TO 0.57
 DOUGLAS COUNTY
 FILE: 13996RW.DGN :: CRR

FOR ODOT REGION 3
 3500 NW. STEWART PKWY.
 ROSEBURG, OR. 97470

SEPTEMBER 24, 2015
 SCALE: 1" = 50'
 SHEET 7 OF 14

ST. HWY. 138-015 G