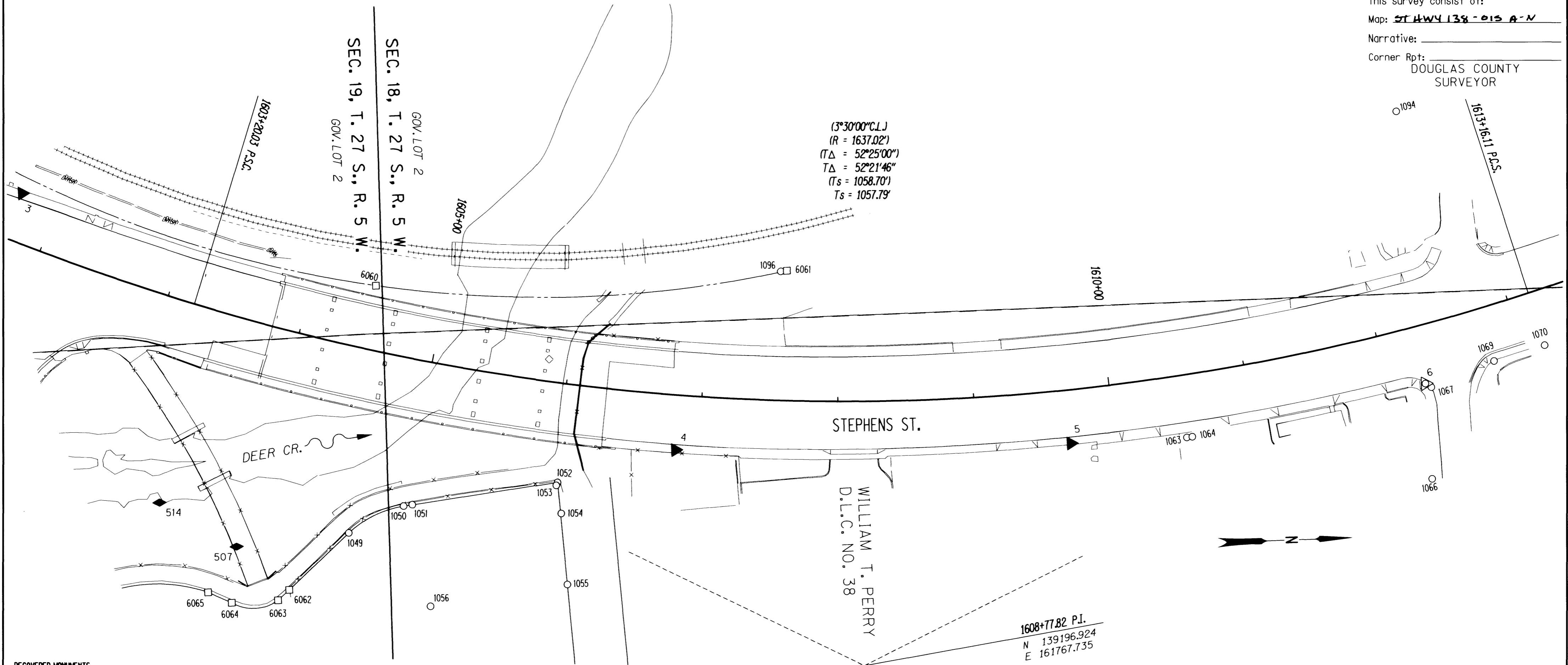


SW1/4 Sec 18 & NW1/4 Sec 19, T. 27 S., R. 5 W., W.M.

FILED

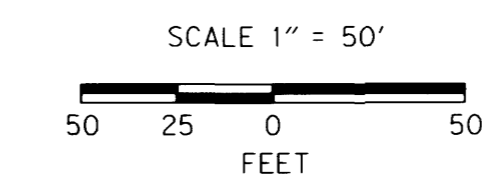
Date: 9-29-2015 By: *X*  
 This survey consist of:  
 Map: ST HWY 138-015 A-N  
 Narrative:  
 Corner Rpt: DOUGLAS COUNTY SURVEYOR



RECOVERED MONUMENTS								
PT. NO.	OCRS NORTHING	OCRS EASTING	ELEVATION	STATION	OFFSET (- IS LEFT)	DATE	DESCRIPTION	REFERENCE
1049	138821.844	161656.331	-	-	-	4/2/2012	FD. 1 1/4" YELLOW PLASTIC CAP STAMPED "I.E. ENGINEERING" 0.4 FT ABOVE SURFACE GOOD CONDITION	M142-49
1050	138862.747	161638.058	-	-	-	4/25/2012	FD. 1 1/4" YELLOW PLASTIC CAP STAMPED "I.E. ENGINEERING" 0.2 FT BELOW SURFACE GOOD CONDITION	M142-49
1051	138869.215	161637.263	-	-	-	4/25/2012	FD. 1 1/4" YELLOW PLASTIC CAP STAMPED "I.E. ENGINEERING" 0.6 FT BELOW SURFACE GOOD CONDITION	M142-49
1052	138976.535	161624.719	-	1606+02.43	72.69	4/2/2012	FD. 1 1/4" YELLOW PLASTIC CAP STAMPED "I.E. ENGINEERING" 0.1 FT BELOW SURFACE GOOD CONDITION	M142-49
1053	138975.473	161626.837	-	1606+01.75	74.95	4/2/2012	FD. 5/8" IRON ROD 0.7 FT BELOW SURFACE GOOD CONDITION	UNKNOWN
1054	138978.320	161647.604	-	1606+07.57	95.00	4/25/2012	FD. 1/2" IRON REBAR 0.2 FT BELOW SURFACE GOOD CONDITION	M67-35
1055	138980.930	161699.959	-	-	-	4/25/2012	FD. 1 1/4" YELLOW PLASTIC CAP STAMPED "I.E. ENGINEERING" 0.3 FT BELOW SURFACE GOOD CONDITION	M142-49
1056	138879.772	161712.532	-	-	-	4/25/2012	FD. 1 1/4" YELLOW PLASTIC CAP STAMPED "I.E. ENGINEERING" 0.4 FT BELOW SURFACE GOOD CONDITION	M142-49
1063	139440.304	161609.517	-	1610+50.90	45.81	4/2/2012	FD. 5/8" IRON REBAR 0.1 FT ABOVE SURFACE GOOD CONDITION	RMS-20
1064	139444.305	161609.126	-	1610+54.81	45.88	4/2/2012	FD. 5/8" IRON REBAR WITH 1 1/4" YELLOW PLASTIC CAP STAMPED "LAND MARK PLS 2287" 0.1 FT ABOVE SURFACE GOOD CONDITION	M162-63
1066	139619.528	161646.594	-	-	-	4/25/2012	FD. 1 1/4" YELLOW PLASTIC CAP STAMPED "LAND MARK PLS 2287" 0.2 FT ABOVE SURFACE GOOD CONDITION	M162-63
1067	139621.413	161579.319	-	1612+29.58	46.12	4/25/2012	FD. 1 1/2" ALUM. CAP STAMPED "OREG. STATE HWY. DEPT. 1612-27" 0.2 FT BELOW A.C. GOOD CONDITION AT SE CORNER OF WRIGHT AVE AND STEPHENS ST.	DRG 5B-5-21A
1069	139668.152	161561.914	-	1612+77.83	40.14	4/2/2012	FD. 5/8" IRON REBAR FLUSH WITH SURFACE GOOD CONDITION	M131-33
1070	139705.839	161551.759	-	1613+15.93	40.11	4/2/2012	FD. MAG NAIL IN A/C	M131-33
1094	139603.187	161375.944	-	-	-	4/25/2012	FD. 1 3/4" OD. IRON PIPE 3.4 FT ABOVE SURFACE GOOD CONDITION IN MIDDLE OF LARGE MAPLE TREE LEANS SLIGHTLY SW TIED ON TOP	M44-61
1096	139146.404	161476.042	-	1607+55.20	-94.67	4/26/2012	FD. 5/8" IRON REBAR 0.2 FT ABOVE SURFACE GOOD CONDITION	M44-61

CONTROL MONUMENT								
PT. NO.	OCRS NORTHING	OCRS EASTING	ELEVATION	STATION	OFFSET (- IS LEFT)	DATE	DESCRIPTION	REFERENCE
4	139063.867	161604.223	464.24	1606+83.36	40.46	4/18/2012	SET 1" COPPER DISK STAMPED "ODOT CONTROL 4" FLUSH WITH CONCRETE SIDEWALK	-
5	139354.902	161610.403	474.91	1609+67.89	39.27	4/18/2012	SET 1" COPPER DISK STAMPED "ODOT CONTROL 5" FLUSH WITH CONCRETE SIDEWALK	-
6	139617.117	161576.523	488.61	1612+26.10	42.45	4/25/2012	FD. 2 3/4" BRASS DISK STAMPED "STATE HIGHWAY DEPARTMENT REFERENCE RP POST 596.77 FT BACK OF PT" FLUSH IN CONCRETE CURB GOOD CONDITION	DRG 5B-5-21A
507	138738.992	161663.275	-	-	-	6/5/2012	SET 1" COPPER DISK STAMPED "ODOT CONTROL 507"	-
514	138683.544	161628.796	-	-	-	6/6/2012	FD. 1 1/4" IRON ROD 0.4 FT ABOVE SURFACE	UNKNOWN

CALCULATED POINTS								
PT. NO.	OCRS NORTHING	OCRS EASTING	ELEVATION	STATION	OFFSET (- IS LEFT)	DATE	DESCRIPTION	REFERENCE
6060	138848.621	161475.335	-	1604+47.46	-47.04	-	COMMON RAILROAD RIGHT OF WAY (30' LT. OF CENTER OF TRACKS) AND RIGHT OF WAY DRG. 5B-5-21A	-
6061	139150.920	161475.633	-	1607+59.96	-95.38	-	COMMON RAILROAD RIGHT OF WAY (30' LT. OF CENTER OF TRACKS) AND RIGHT OF WAY DRG. 5B-5-21A	-
6062	138776.569	161696.455	-	-	-	-	RIGHT OF WAY SEE DEED INSTR. NO. 2008-017131	-
6063	138768.001	161703.807	-	-	-	-	RIGHT OF WAY SEE DEED INSTR. NO. 2008-017131	-
6064	138733.956	161704.403	-	-	-	-	RIGHT OF WAY SEE DEED INSTR. NO. 2008-017131	-
6065	138716.881	161696.162	-	-	-	-	RIGHT OF WAY SEE DEED INSTR. NO. 2008-017131	-



POINT LEGEND	
○	FOUND MONUMENT
□	CALCULATED POINT
▲	SET NETWORK POINT
△	FOUND MONUMENT USED AS NETWORK POINT
◆	SET STRATEGIC POINT
FOR MONUMENTS NOT SHOWN ON INDIVIDUAL SHEETS SEE SHEETS 1 AND 2	
FOR LINE LEGEND SEE SHEET 1	

REGISTERED PROFESSIONAL LAND SURVEYOR  
*Marshall R. Wagstaff*  
 OREGON JANUARY 9, 2001  
 MARSHALL R. WAGSTAFF 49476  
 EXPIRES: 6/30/2016

SI FEET  
**T** OREGON DEPARTMENT OF TRANSPORTATION  
 HORIZONTAL CONTROL, RECOVERY AND RETRACEMENT MAP  
 FFO - OR 138E: CORRIDOR SOLUTIONS (ROSEBURG) SECTION  
 NORTH UMPQUA HWY. NO. 138, OR138, M.P. -0.62 TO 0.57  
 DOUGLAS COUNTY  
 FILE: 13996RW.DGN :: CRR

FOR ODOT REGION 3 SEPTEMBER 24, 2015  
 3500 NW. STEWART PKWY. SCALE: 1" = 50'  
 ROSEBURG, OR. 97470 SHEET 6 OF 14