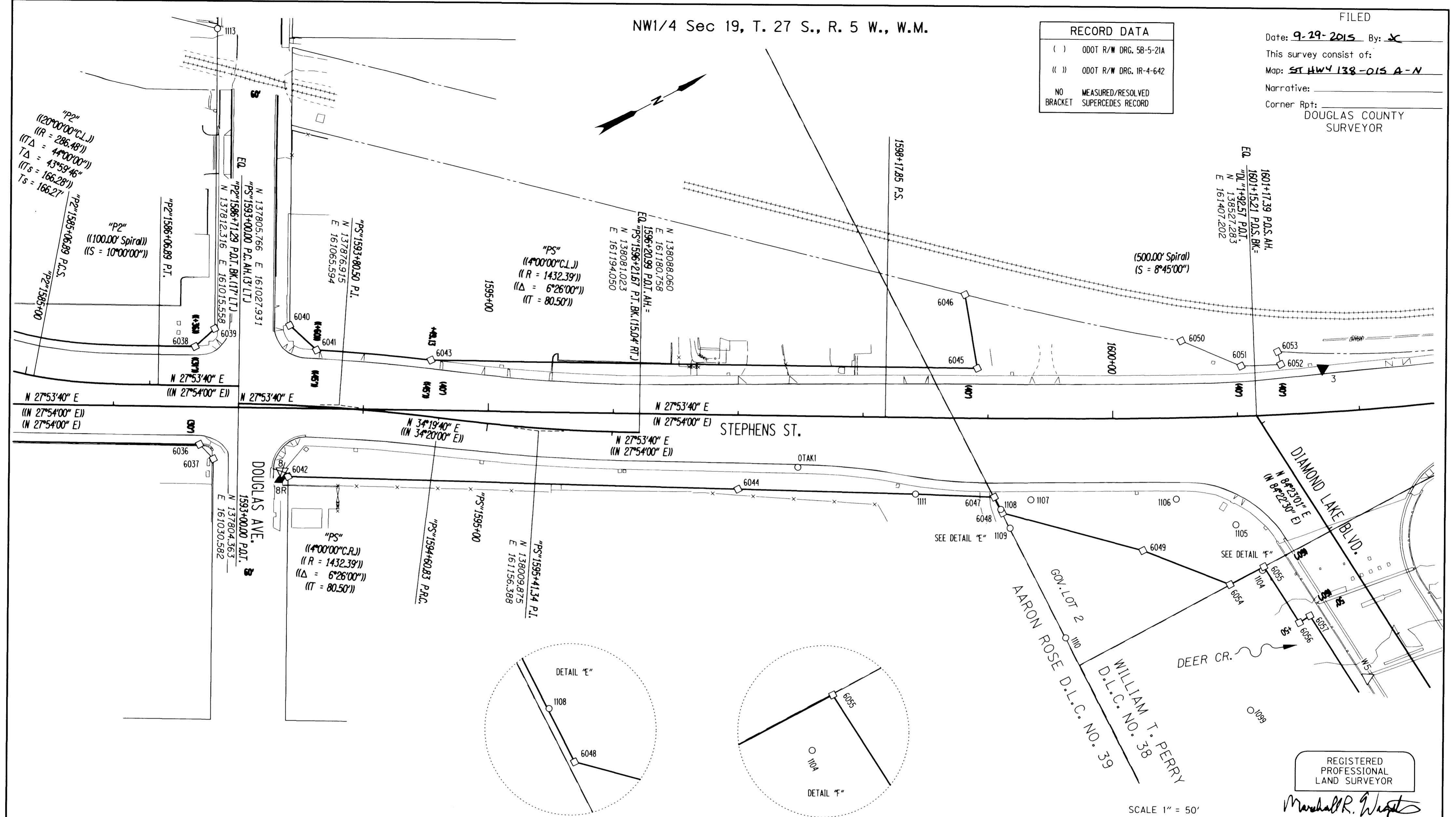


NW1/4 Sec 19, T. 27 S., R. 5 W., W.M.

RECORD DATA	
( )	ODOT R/W DRG. 58-5-21A
( )	ODOT R/W DRG. IR-4-642
NO	MEASURED/RESOLVED
BRACKET	SUPERCEDES RECORD

FILED  
 Date: 9-29-2015 By: JC  
 This survey consist of:  
 Map: ST HWY 138-015 A-N  
 Narrative:  
 Corner Rpt:  
 DOUGLAS COUNTY  
 SURVEYOR



RECOVERED MONUMENTS

PT. NO.	OCRS	NORTHING	OCRS EASTING	ELEVATION	STATION	OFFSET (- IS LEFT)	DATE	DESCRIPTION	REFERENCE
1099	138416.291	161614.434	-	-	-	-	4/25/2012	FD. 5/8" IRON REBAR BENT SOUTHEAST TIED WHERE ENTERS GROUND FLUSH WITH SURFACE FAIR CONDITION	M52-33
1104	138475.493	161519.329	-	-	"DL"2+99.08	62.52	4/2/2012	FD. 5/8" IRON ROD WITH 1" OD. PIPE OVERTOP. PIPE EXTENDS 2.0 FT ABOVE SURFACE TIED ALONGSIDE PIPE GOOD CONDITION	M40-60
1105	138473.103	161477.420	-	-	"DL"2+57.14	60.79	4/2/2012	FD. 5/8" IRON ROD BENT SOUTH 0.4 FT BELOW SURFACE TIED WHERE ROD ENTERS GROUND POOR CONDITION	M40-60
1106	138439.739	161437.414	-	-	1600+49.78	64.88	4/2/2012	FD. 5/8" IRON ROD BENT EASTERLY 0.5 FT BELOW SURFACE TIED WHERE ROD ENTERS GROUND POOR CONDITION	M40-60
1107	138335.734	161384.947	-	-	1599+34.88	64.92	4/2/2012	FD. 5/8" IRON ROD BENT EASTERLY 0.5 FT BELOW SURFACE TIED WHERE ROD ENTERS GROUND POOR CONDITION	M40-60
1108	138310.864	161380.647	-	-	1599+11.04	72.59	4/2/2012	FD. 5/8" IRON ROD BENT S.E. 0.6 FT. BELOW SURFACE TIED WHERE ROD ENTERS GROUND POOR CONDITION	M40-60
1109	138310.757	161397.390	-	-	1599+18.62	87.48	4/2/2012	FD. 5/8" IRON ROD BENT SOUTHERLY 0.6 FT BELOW SURFACE TIED WHERE ROD ENTERS GROUND POOR CONDITION	M40-60
1110	138310.540	161495.747	-	-	-	-	4/2/2012	FD. 1 1/4" YELLOW PLASTIC CAP STAMPED "HIBBS LS 52989" 0.1 FT BELOW SURFACE GOOD CONDITION	VOL. 23, PG. 10A
1111	138255.651	161338.653	-	-	1598+42.96	61.15	4/2/2012	FD. 1 1/4" YELLOW PLASTIC CAP STAMPED "HIBBS LS 52989" 1.0 FT BELOW SURFACE GOOD CONDITION	VOL. 23, PG. 10A
1113	137927.068	160754.008	-	-	-	-	4/3/2012	FD. 1 1/4" YELLOW PLASTIC CAP STAMPED "R. BROWN PLS 2391" SET FLUSH WITH SURFACE GOOD CONDITION	M146-14B
OTAK1	138181.511	161276.594	-	-	1597+48.42	40.98	4/3/2012	FD. PK NAIL AND WASHER STAMPED "OTAK CONTROL 1" FLUSH IN CONCRETE SIDEWALK GOOD CONDITION	M134-24

FOR CALCULATED POINTS SEE SHEET 4

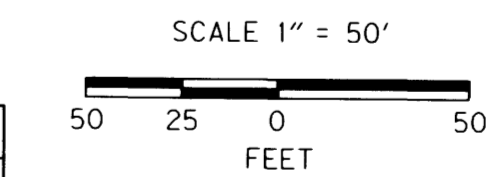
PT. NO.	OCRS	NORTHING	OCRS EASTING	ELEVATION	STATION	OFFSET (- IS LEFT)	DATE	DESCRIPTION	REFERENCE
3	138591.467	161397.715	455.35	1601+72.45	-34.96	4/18/2012	SET 1" COPPER DISK STAMPED "ODOT CONTROL 3" FLUSH WITH CONCRETE SIDEWALK	-	
8	137812.079	161092.096	465.16	1593+35.60	50.76	4/18/2012	DESTROYED 1" COPPER DISK STAMPED "ODOT CONTROL 8" FLUSH WITH CONCRETE SIDEWALK	-	
8R	137807.834	161097.270	465.34	1593+34.27	57.32	7/13/2015	SET 1" COPPER DISK STAMPED "ODOT CONTROL 8R" FLUSH WITH CONCRETE SIDEWALK TIED USING 3 POINT RESECTION	-	
WS	138511.532	161633.969	452.87	"DL"4+16.70	37.87	4/2/2012	FD. 1" COPPER DISK STAMPED "ODOT CONTROL 5" FLUSH WITH CONCRETE SIDEWALK GOOD CONDITION	ST. HWY. 138-006	

POINT LEGEND

- FOUND MONUMENT
- CALCULATED POINT
- △ FOUND NETWORK POINT
- ▲ SET NETWORK POINT
- ⊗ DESTROYED NETWORK POINT
- ◆ SET STRATEGIC POINT

FOR MONUMENTS NOT SHOWN ON INDIVIDUAL SHEETS SEE SHEETS 1 AND 2

FOR LINE LEGEND SEE SHEET 1



REGISTERED PROFESSIONAL LAND SURVEYOR  
 Marshall R. Wagstaff  
 OREGON  
 JANUARY 9, 2001  
 MARSHALL R. WAGSTAFF  
 49476  
 EXPIRES: 6/30/2016

SI FEET  
**T** OREGON DEPARTMENT OF TRANSPORTATION  
 HORIZONTAL CONTROL, RECOVERY AND RETRACEMENT MAP  
 FFO - OR 138E: CORRIDOR SOLUTIONS (ROSEBURG) SECTION  
 NORTH UMPQUA HWY. NO. 138, OR138, M.P. -0.62 TO 0.57  
 DOUGLAS COUNTY  
 FILE: 13996RW.DGN :: CRR

FOR ODOT REGION 3  
 3500 NW. STEWART PKWY.  
 ROSEBURG, OR. 97470

SEPTEMBER 24, 2015  
 SCALE: 1" = 50'  
 SHEET 5 OF 14

ST. HWY. 138-015 E