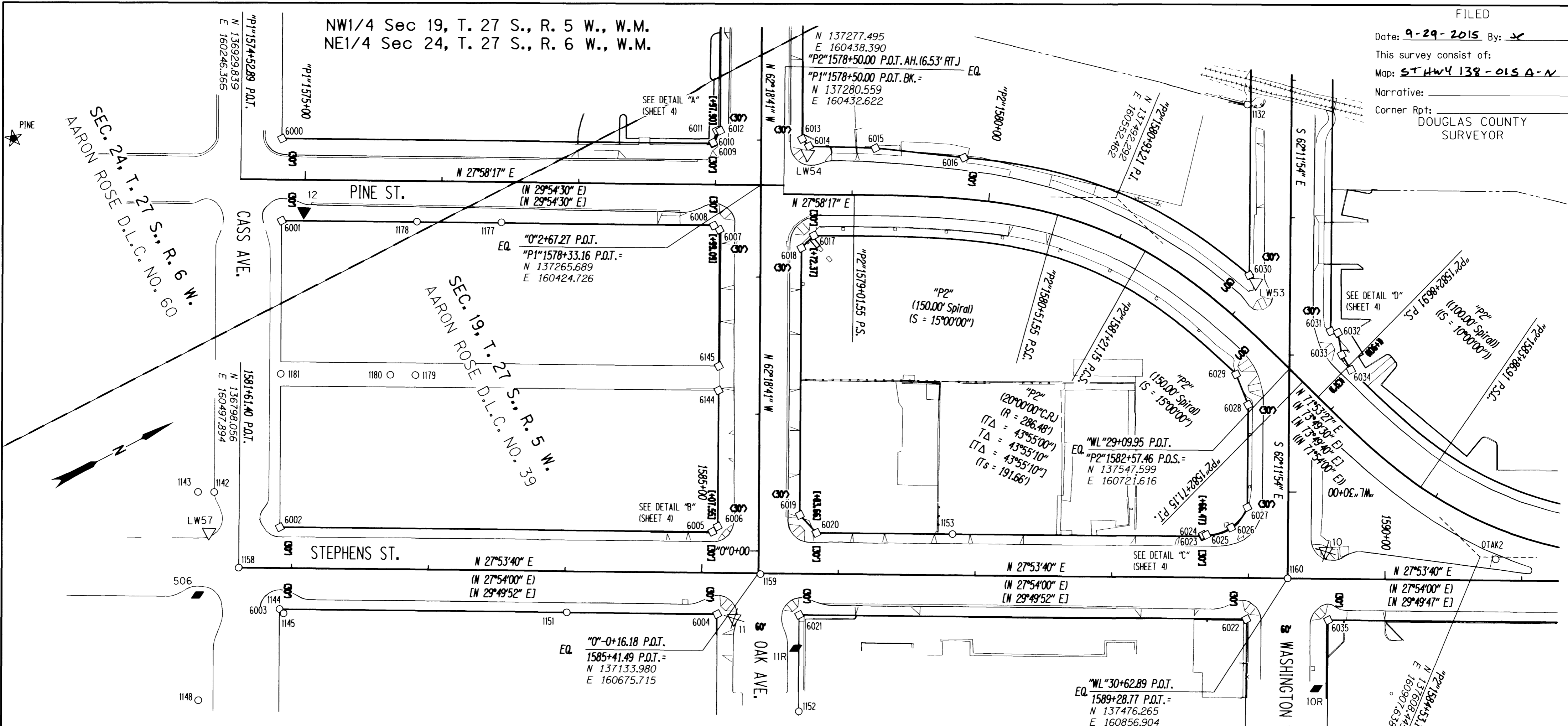


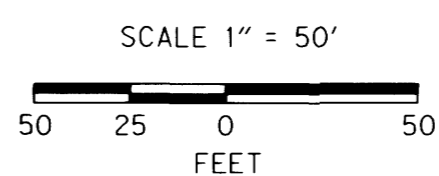
Date: 9-29-2015 By: *JK*  
This survey consist of:  
Map: ST HWY 138-015 A-N  
Narrative:  
Corner Rpt: DOUGLAS COUNTY SURVEYOR



RECOVERED MONUMENTS FOR CALCULATED POINTS SEE SHEET 4

PT. NO.	OCRS	NORTHING	OCRS EASTING	ELEVATION	STATION	OFFSET (- IS LEFT)	DATE	DESCRIPTION	REFERENCE
1132	137608.790	160536.056	-	-	"WL"27+17.27	32.42	4/3/2012	FD. 1 1/4" YELLOW PLASTIC CAP STAMP NOT READABLE FLUSH WITH AC. GOOD CONDITION	MI31-20
1142	136807.499	160440.692	-	-	-	-	4/25/2012	FD. BRASS SCREW IN LEAD WOOL FLUSH IN TOP OF CONCRETE CURB GOOD CONDITION	MI34-24
1143	136797.085	160435.213	-	-	-	-	4/25/2012	FD. BRASS SCREW IN LEAD WOOL FLUSH AT BACK OF SIDEWALK GOOD CONDITION	MI34-24
1144	136810.749	160538.413	-	1581+91.57	29.87	4/26/2012	FD. 1 1/2" OD. IRON PIPE FILLED WITH CONCRETE 0.1 FT BELOW CONCRETE SIDEWALK GOOD CONDITION	M33-21	
1145	136811.918	160542.545	-	1581+94.54	32.98	4/26/2012	FD. 1 1/4" BRASS DISK SCRIBED WITH SCRIBED "X" IN 8" X 8" CONCRETE PEDESTAL 0.2 FT BELOW SURFACE GOOD CONDITION	M33-21	
1148	136727.390	160570.454	-	-	-	4/25/2012	FD. SCRIBED "X" AT BACK OF CONCRETE SIDEWALK NEAR BLDG. CORNER	CS 11/34	
1151	136996.235	160636.640	-	1584+01.46	29.91	4/25/2012	FD. 3/4" IRON REBAR AT BACK OF CONCRETE SIDEWALK 0.1 FT BELOW SURFACE GOOD CONDITION	MI40-69	
1152	137113.980	160778.886	-	-	-	4/3/2012	FD. 3/4" OD. PIPE 0.2 FT. ABOVE SURFACE GOOD CONDITION	M25-26	
1153	137273.289	160715.520	-	1586+83.23	-30.00	4/3/2012	FD. 5/8" IRON ROD AT EDGE OF CONCRETE SIDE WALK TIED ON TOP OF WALK. 0.3 FT. BELOW SURFACE GOOD CONDITION	M21-26	
1158	136798.056	160497.894	-	1581+61.40	0.00	5/20/2012	FD. 2 3/4" BRASS DISK WITH PUNCH IN CENTER 0.75 FT BELOW PAVED SURFACE NO MONUMENT BOX AT INTERSECTION OF STEPHENS AND CASS STREETS GOOD CONDITION STA. 1581+61.4 FROM DRG 58-5-21A	CS 18/30	
1159	137134.971	160676.993	-	1585+42.96	0.67	5/20/2012	FD. 2" OD. IRON PIPE 1.0" BELOW SURFACE NO MONUMENT BOX AT INTERSECTION OF OAK AND STEPHENS STREETS	CS 18/30	
1160	137476.265	160856.904	-	1589+28.77	0.00	5/10/2012	FD. 2 3/4" BRASS DISK STAMPED "STATE HIGHWAY DEPARTMENT ELEVATION FEET X" IN A 10" DIAMETER MONUMENT BOX 0.65" BELOW A.C. SURFACE GOOD CONDITION AT INTERSECTION OF WASHINGTON AVE. AND STEPHENS STREET STA. 1589+27.7	DRG 58-5-21A	
1177	137084.450	160362.095	-	"P1"1576+43.72	29.69	7/13/2015	FD. SCREW WITH 1 3/8" COPPER WASHER STAMPED "2295"	MI65-49	
1178	137029.848	160333.214	-	"P1"1575+81.95	29.80	7/13/2015	FD. PK NAIL WITH WASHER STAMPED "LS 52989"	MI67-66	
1179	136977.495	160432.235	-	-	-	7/13/2015	FD. PK NAIL WITH WASHER STAMPED "LS 52989"	MI67-66	
1180	136961.319	160423.677	-	-	-	7/13/2015	FD. SCREW WITH 1 3/8" COPPER WASHER STAMPED "2295"	MI65-49	
1181	136890.471	160386.187	-	-	-	7/13/2015	FD. SCREW WITH 1 3/8" COPPER WASHER STAMPED "2295"	MI65-49	
OTAK2	137617.817	160914.492	-	1590+80.82	-15.33	5/10/2012	FD. PK NAIL AND WASHER STAMPED "OTAK CONTROL 2" FLUSH IN CONCRETE SURFACE	MI34-24	

PT. NO.	OCRS	NORTHING	OCRS EASTING	ELEVATION	STATION	OFFSET (- IS LEFT)	DATE	DESCRIPTION	REFERENCE
10	137509.937	160852.285	469.45	1589+56.37	-19.84	4/18/2012	DESTROYED 1" COPPER DISK STAMPED "ODOT CONTROL 10" FLUSH WITH CONCRETE SIDEWALK	-	
10R	137457.897	160937.973	474.37	1589+50.46	80.24	7/13/2015	SET 1" COPPER DISK STAMPED "ODOT CONTROL 10R" FLUSH WITH CONCRETE SIDEWALK TIED USING 3 POINT RESECTION	-	
11	137103.041	160696.825	475.35	1585+24.02	33.13	4/18/2012	DESTROYED 1" COPPER DISK STAMPED "ODOT CONTROL 11" FLUSH WITH CONCRETE SIDEWALK	-	
11R	137133.056	160736.897	475.58	1585+69.29	54.51	7/13/2015	SET 1" COPPER DISK STAMPED "ODOT CONTROL 11R" FLUSH WITH CONCRETE SIDEWALK TIED USING 3 POINT RESECTION	-	
12	136959.918	160288.672	473.01	"P1"1574+99.30	23.26	4/19/2012	SET 1" COPPER DISK STAMPED "ODOT CONTROL 12" FLUSH WITH CONCRETE SIDEWALK	-	
506	136762.105	160501.895	-	-	-	4/26/2012	SET MAG. NAIL AND WASHER STAMPED "ODOT 506"	-	
LW53	137554.522	160654.652	464.35	"WL"28+47.49	25.11	4/19/2012	FD. 1 1/2" BRASS CAP STAMPED "ODOT CONTROL 53" FLUSH WITH CONCRETE SIDEWALK GOOD CONDITION	ST. HWY. 99-004	
LW54	137306.516	160420.441	467.70	"O"2+90.03	34.16	4/19/2012	FD. 1 1/2" BRASS CAP STAMPED "ODOT CONTROL 54" FLUSH WITH CONCRETE SIDEWALK GOOD CONDITION	ST. HWY. 99-004	
LW57	136790.620	160465.052	481.54	-	-	4/19/2012	FD. 1 1/2" BRASS CAP STAMPED "ODOT CONTROL 57" FLUSH WITH CONCRETE SIDEWALK GOOD CONDITION	ST. HWY. 99-004	
PINE	136795.903	160143.691	471.69	-	-	4/19/2012	SET 1" COPPER DISK STAMPED "ODOT CONTROL PINE" IN CONCRETE SIDEWALK	-	



- POINT LEGEND**
- FOUND MONUMENT
  - CALCULATED POINT
  - ★ SET GPS STATION
  - △ FOUND NETWORK POINT
  - ▲ SET NETWORK POINT
  - ⊗ DESTROYED NETWORK POINT
  - ◆ SET STRATEGIC POINT

FOR MONUMENTS NOT SHOWN ON INDIVIDUAL SHEETS SEE SHEETS 1 AND 2  
FOR LINE LEGEND SEE SHEET 1

REGISTERED PROFESSIONAL LAND SURVEYOR  
*Marshall R. Wagstaff*  
OREGON  
JANUARY 9, 2001  
MARSHALL R. WAGSTAFF  
49476  
EXPIRES: 6/30/2016

RECORD DATA	
( )	ODOT R/W DRG. 58-5-21A
( ( ) )	ODOT R/W DRG. 1R-4-642
[ ]	ODOT R/W DRG. 10B-14-16
< >	ORIGINAL PLAT
NO BRACKET	MEASURED/RESOLVED SUPERCEDES RECORD

**SI FEET** OREGON DEPARTMENT OF TRANSPORTATION  
HORIZONTAL CONTROL, RECOVERY AND RETRACEMENT MAP  
FFO - OR 138E: CORRIDOR SOLUTIONS (ROSEBURG) SECTION  
NORTH UMPQUA HWY. NO. 138, OR138, M.P. -0.62 TO 0.57  
DOUGLAS COUNTY  
FILE: 13996RW.DGN :: CRR  
FOR ODOT REGION 3 SEPTEMBER 24, 2015  
3500 NW. STEWART PKWY. SCALE: 1" = 50'  
ROSEBURG, OR. 97470 SHEET 3 OF 14

# ST. HWY. 138-015 C