

**BOUNDARY LINE LEGEND**

EXISTING HIGHWAY RIGHT OF WAY	ACCESS CONTROLLED	NOT CONTROLLED
EXISTING STREET RIGHT OF WAY		
EXISTING RAILROAD RIGHT OF WAY		
EXISTING EASEMENT		
EXISTING PROPERTY		
DONATION LAND CLAIM (THIS SIDE)		
DONATION LAND CLAIM (BOTH SIDES)		
TOWNSHIP		
SECTION		
1/4 SECTION		
1/16 SECTION OR GOVERNMENT LOT		

Sec 18 & 19, T. 27 S., R. 5 W., W.M.  
 Sec 13 & 24, T. 27 S., R. 6 W., W.M.

FILED  
 Date: 9-29-2015 By: JC  
 This survey consist of:  
 Map: ST HWY 138-015 A-N  
 Narrative:  
 Corner Rpt: DOUGLAS COUNTY SURVEYOR

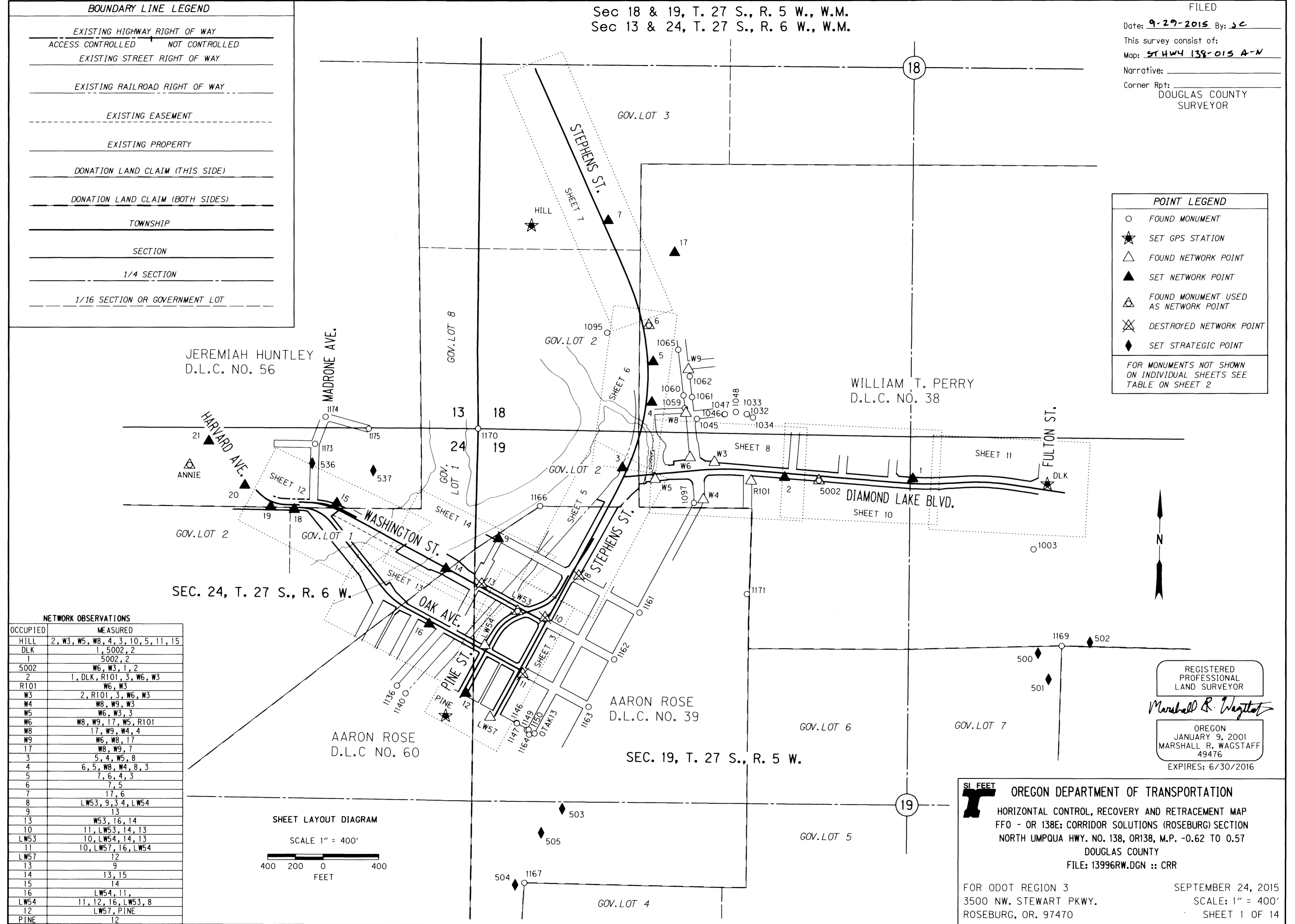
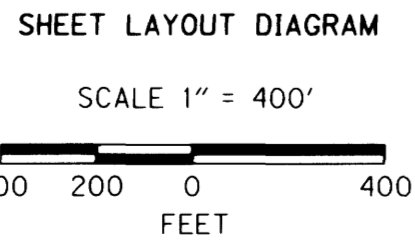
**POINT LEGEND**

○	FOUND MONUMENT
★	SET GPS STATION
△	FOUND NETWORK POINT
▲	SET NETWORK POINT
△	FOUND MONUMENT USED AS NETWORK POINT
⊗	DESTROYED NETWORK POINT
◆	SET STRATEGIC POINT

FOR MONUMENTS NOT SHOWN ON INDIVIDUAL SHEETS SEE TABLE ON SHEET 2

**NETWORK OBSERVATIONS**

OCCUPIED	MEASURED
HILL	2, W3, W5, W8, 4, 3, 10, 5, 11, 15
DLK	1, 5002, 2
1	5002, 2
5002	W6, W3, 1, 2
2	1, DLK, R101, 3, W6, W3
R101	W6, W3
W3	2, R101, 3, W6, W3
W4	W8, W9, W3
W5	W6, W3, 3
W6	W8, W9, 17, W5, R101
W8	17, W9, W4, 4
W9	W6, W8, 17
17	W8, W9, 7
3	5, 4, W5, 8
4	6, 5, W8, W4, 8, 3
5	7, 6, 4, 3
6	7, 5
7	17, 6
8	LW53, 9, 3, 4, LW54
9	13
13	W53, 16, 14
10	11, LW53, 14, 13
LW53	10, LW54, 14, 13
11	10, LW57, 16, LW54
LW57	12
13	9
14	13, 15
15	14
16	LW54, 11,
LW54	11, 12, 16, LW53, 8
12	LW57, PINE
PINE	12



REGISTERED PROFESSIONAL LAND SURVEYOR  
*Marshall R. Wagstaff*  
 OREGON  
 JANUARY 9, 2001  
 MARSHALL R. WAGSTAFF  
 49476  
 EXPIRES: 6/30/2016

**OREGON DEPARTMENT OF TRANSPORTATION**  
 HORIZONTAL CONTROL, RECOVERY AND RETRACEMENT MAP  
 FFO - OR 138E: CORRIDOR SOLUTIONS (ROSEBURG) SECTION  
 NORTH UMPQUA HWY. NO. 138, OR138, M.P. -0.62 TO 0.57  
 DOUGLAS COUNTY  
 FILE: 13996RW.DGN :: CRR

FOR ODOT REGION 3  
 3500 NW. STEWART PKWY.  
 ROSEBURG, OR. 97470

SEPTEMBER 24, 2015  
 SCALE: 1" = 400'  
 SHEET 1 OF 14

**NARRATIVE**

**PURPOSE**

THE PURPOSE OF THIS SURVEY IS TO DOCUMENT THE POSITION OF EXISTING MONUMENTS AND RESOLVE THE EXISTING RIGHT OF WAY IN PREPARATION FOR A PROJECT NAMED "FFO - OR 138E CORRIDOR SOLUTIONS (ROSEBURG) SECTION". SURVEY FIELD WORK WAS PERFORMED BETWEEN MARCH OF 2012 AND JULY OF 2015.

**COORDINATES & BASIS OF BEARING**

THE BEARINGS ARE BASED ON THE OREGON COORDINATE REFERENCE SYSTEM (OCRS) COTTAGE GROVE - CANYONVILLE ZONE, NAD 83 (OCRS96) EPOCH 2002. THE OCRS COORDINATES ARE EQUAL TO OR CLOSE TO TRUE GROUND DISTANCES. ALL COORDINATES ARE IN INTERNATIONAL FEET.

**HORIZONTAL CONTROL**

POINTS "HILL", "PINE" AND "DLK" FORM THE BASIS OF BEARING FOR THIS PROJECT AND WERE SET FOR THE PURPOSE OF BEING USED AS PRIMARY PROJECT CONTROL. THESE POINTS WERE OCCUPIED TWICE FOR 1 HOUR USING RAPID STATIC GPS METHODS WITH AN HOUR BETWEEN OCCUPATIONS. COORDINATE POSITIONS WERE CALCULATED ON THESE CONTROL POINTS BY HOLDING OREGON REAL TIME NETWORK (ORGN) STATIONS "DCSO", "OAKR", "P363", "P365", "PSPT", "SUHS", AND "YONC". A LEAST SQUARES ADJUSTMENT WAS APPLIED TO THE RESULTANT BASELINE POSITIONS. A TOTAL STATION WAS USED TO COMPLETE A HORIZONTAL CONTROL NETWORK CONSTRAINING TO THE PRIMARY CONTROL POINTS AND A LEAST SQUARES ADJUSTMENT WAS APPLIED. POINTS SHOWN IN THE NETWORK OBSERVATION TABLE (SEE SHEET 1) AND RESECTION POINTS HAVE AN EXPECTED HORIZONTAL ACCURACY OF 0.03 FEET OR LESS. ALL OTHER POINTS WERE DOUBLE TIED USING REAL TIME KINEMATIC (RTK) GPS METHODS AND HAVE AN EXPECTED HORIZONTAL ACCURACY OF 0.10 FEET OR LESS.

**HORIZONTAL CONTROL EQUIPMENT**

A LEICA VIVA TS15 TOTAL STATION WAS USED FOR GATHERING TOPOGRAPHIC DATA AND RUNNING THE HORIZONTAL CONTROL NETWORK. IT HAS THE FOLLOWING ACCURACY: STANDARD ANGULAR ERROR +/- 1 SECOND, STANDARD DISTANCE ERROR OF +/- 1MM + 1.5 PPM.

A LEICA GX1230 DUAL FREQUENCY GPS RECEIVER WAS USED FOR GPS OBSERVATIONS. IT HAS THE FOLLOWING ACCURACY: PHASED DIFFERENTIAL STATIC METHOD HORIZONTAL ERROR OF 5 MM + 0.5 PPM AND A VERTICAL ERROR OF 10 MM + 0.5 PPM. PHASED DIFFERENTIAL RTK METHOD HORIZONTAL ERROR OF 10 MM + 1 PPM AND A VERTICAL ERROR OF 20 MM + 1 PPM.

**VERTICAL CONTROL**

BENCH MARKS "A253", "N554" AND "N749" WITH NAVD 88 DATUM ELEVATIONS WERE HELD FOR VERTICAL CONTROL. A LEVEL CIRCUIT WAS RUN TO ESTABLISH ELEVATIONS ON SELECTED CONTROL AND STRATEGIC POINTS. ALL ELEVATIONS SHOWN IN TABLES ON THIS SURVEY ARE FROM THE LEVEL CIRCUIT HOLDING SAID BENCHMARKS AND HAVE AN EXPECTED VERTICAL ACCURACY OF 0.03 FEET OR LESS.

**VERTICAL CONTROL EQUIPMENT**

A LEICA NA2002 DIGITAL LEVEL AND A LEICA GBN4C ALUMINUM LEVEL ROD WAS USED TO COMPLETE THE LEVEL CIRCUITS. THIS INSTRUMENT HAS THE FOLLOWING STANDARD DEVIATION OF 1.5MM IN A 1 KILOMETER DOUBLE RUN LEVEL CIRCUIT.

**NORTH UMPQUA HIGHWAY**

THE NORTH UMPQUA HIGHWAY IN THE CITY OF ROSEBURG IS COMPRISED OF PORTIONS OF THE FOLLOWING STREETS: STEPHENS STREET, PINE STREET, DIAMOND LAKE BOULEVARD, HARVARD AVENUE, OAK AVENUE, AND WASHINGTON STREET.

**STEPHENS STREET RIGHT OF WAY**

THE RIGHT OF WAY OF STEPHENS STREET WAS RESOLVED USING ODOT RIGHT OF WAY DRAWINGS (DRG) 5B-5-21A, 10B-14-16, AND THE "ROSEBURG" AND "RAIL ROAD ADDITION" PLATS RECORDED AT THE DOUGLAS COUNTY SURVEYOR'S OFFICE. THE STEPHENS STREET RIGHT OF WAY CENTER LINE USES NO CENTER LINE DESIGNATOR. THE FIRST TANGENT HELD POINT 1158 AND 1160. THE SECOND TANGENT HELD POINT 6 AND THE RECORD OFFSET FROM POINT 1083. RECORD STATIONING FROM DRG 5B-5-21A WAS HELD AT POINT 1158 AND THE CENTER LINE INTERSECT WITH A LINE BETWEEN POINTS 1082PLUS AND 1084. TO ACCOUNT FOR THE DIFFERENCE IN STATIONING AN EQUATION WAS PLACED WHERE THE RIGHT OF WAY CENTER LINE OF DIAMOND LAKE BOULEVARD INTERSECTS THIS CENTER LINE. THE RECORD DEGREE OF CURVE AND SPIRAL LENGTHS WERE HELD ON THE CURVE.

A SHORT PORTION OF THE WESTERLY SIDE OF STEPHENS STREET NORTHERLY OF DOUGLAS AVENUE IS DEFINED BY THE "PS" CENTER LINE. THE "PS" CENTER LINE WAS PLACED BY RECORD FROM DRG 1R-4-642. THE FIRST TANGENT OF WHICH IS PARALLEL AND 3 FEET LEFT OF THE STEPHENS STREET CENTER LINE.

**PINE STREET RIGHT OF WAY**

THE RIGHT OF WAY OF PINE STREET WAS RESOLVED USING DRG 5B-5-21A, 1R-4-642, 10B-14-16, AND THE "ROSEBURG" AND "RAIL ROAD ADDITION" PLATS RECORDED AT THE DOUGLAS COUNTY SURVEYOR'S OFFICE. THE PINE STREET CENTER LINES ("P1" AND "P2") WERE DERIVED FROM ATTACHING DRG 10B-14-16 HOLDING COMMON POINT 1160 AND ROTATING TO COMMON POINT 1158. THE PINE STREET CENTER LINES FROM DRG 10B-14-16 WERE HELD SOUTHERLY OF WASHINGTON STREET (EXCEPT THE OFFSET LOCATION BETWEEN THE "P1" AND "P2" CENTER LINES). THE LAST TANGENT ON THE "P2" CENTER LINE WAS ADJUSTED TO COME IN PARALLEL AND 17 FEET LEFT OF THE STEPHENS STREET ALIGNMENT AS PER DRG 1R-4-642.

REGISTERED PROFESSIONAL LAND SURVEYOR

Marshall R. Wagstaff

OREGON JANUARY 9, 2001 MARSHALL R. WAGSTAFF 49476

EXPIRES: 6/30/2016

FILED

Date: 9-29-2015 By: JC

This survey consist of:

Map: ST HWY 138-015 A-N

Narrative:

Corner Rpt:

DOUGLAS COUNTY SURVEYOR

**DIAMOND LAKE BOULEVARD RIGHT OF WAY**  
THE RIGHT OF WAY OF DIAMOND LAKE BOULEVARD WAS RESOLVED USING DRG 5B-5-21A, 6B-12-3, 6B-21-13, 1R-3-1731, COUNTY SURVEY ST. HWY. 138-006, ODOT BRIDGE PLANS FOR STRUCTURE NUMBER 06821A (DEER CREEK BRIDGE ON DIAMOND LAKE BOULEVARD), AND COUNTY ROAD PLAN SC09 1969-008. DIAMOND LAKE BOULEVARD RIGHT OF WAY CENTER LINE IS DESIGNATED "DL". THE FIRST TANGENT HELD A SPLIT OF BRIDGE 06821A. THE SECOND TANGENT HELD THE TANGENT FROM ST. HWY. 138-006, WHICH SURVEY WAS ATTACHED HOLDING COMMON POINT W5 AND ROTATING TO COMMON POINT 5002. THE REST OF THE ALIGNMENT WAS DERIVED FROM ATTACHING DRG 1R-3-1731 HOLDING COMMON POINT 1024 AND ROTATING TO COMMON POINT 1001. THE RECORD CENTER LINE FROM DRG 1R-3-1731 WAS HELD (EXCEPT THE FIRST TANGENT). RECORD STATIONING FROM THE CENTER OF BENT ON THE BRIDGE PLANS FOR STRUCTURE 06821A AND THE POINT OF SPIRAL AT "DL" 23+29.65 FROM DRG 1R-3-1731 WERE HELD. TO ACCOUNT FOR THE DIFFERENCE IN STATIONING AN EQUATION WAS PLACED AT THE POINT OF TANGENT ON THE FIRST CURVE. THE RECORD DEGREE OF CURVE AND SPIRAL LENGTH WERE HELD ON ALL CURVES.

**HARVARD AVENUE RIGHT OF WAY**  
THE RIGHT OF WAY OF HARVARD AVENUE WAS RESOLVED USING DRG 8B-22-1 AND COUNTY ROAD PLAN SC09 1974-027. HARVARD AVENUE RIGHT OF WAY CENTER LINE IS DESIGNATED "H". THE FIRST TANGENT HELD THE RECORD OFFSET FROM POINTS 1155 AND 1156 FROM THE COUNTY ROAD PLAN. THE SECOND TANGENT HELD THE RECORD CURVE INFORMATION FROM THE COUNTY ROAD PLAN. THE "H", "O", AND "WL2" CENTER LINES ARE ALL EQUATED TOGETHER AT 20+00 AND DERIVE THEIR STATIONING FROM THE EASTERLY CENTER OF BENT FROM THE BRIDGE PLAN FOR STRUCTURE 07016A (OAK AVENUE BRIDGE).

**OAK AVENUE RIGHT OF WAY**  
THE RIGHT OF WAY OF OAK AVENUE WAS RESOLVED USING COUNTY ROAD PLANS SC09 1974-026 AND SC09 1974-027 AND ODOT BRIDGE PLANS FOR STRUCTURE NUMBER 07016A. OAK AVENUE RIGHT OF WAY CENTER LINE IS DESIGNATED "O". THE FIRST TANGENT HELD POINT 1163 (SEE SHEET 1) AND A CURB SPLIT THAT MATCHES RECORD TYPICAL SECTION FROM THE COUNTY ROAD PLAN JUST EAST OF PARROT STREET; THIS TANGENT BEST FITS THOSE MONUMENTS THAT ARE DEEMED VALID. THE SECOND TANGENT HELD THE RECORD OFFSET OF 16 FEET FROM THE SOUTHWESTERLY GUTTER FROM THE BRIDGE PLAN FOR STRUCTURE 07016A. THE THIRD TANGENT IS PARALLEL AND 19 FEET SOUTHERLY OF THE "H" CENTER LINE. STATIONING WAS TAKEN FROM THE EASTERLY CENTER OF BENT OF THE BRIDGE PLAN FOR STRUCTURE 07016A. THE RECORD DEGREE OF CURVE WAS HELD ON ALL CURVES.

**WASHINGTON STREET RIGHT OF WAY**  
THE RIGHT OF WAY OF WASHINGTON STREET WAS RESOLVED USING DRG 8B-22-1 AND COUNTY ROAD PLAN SC09 1974-027. THE WASHINGTON STREET "WL" CENTER LINE IS FROM DRG 8B-22-1 HOLDING POINTS 1160 AND 1165 FOR THE FORWARD TANGENT. THE RECORD CURVE INFORMATION WAS HELD AT RECORD STATION. STATIONING WAS TAKEN FROM THE EASTERLY CENTER OF BENT OF THE BRIDGE PLAN FOR STRUCTURE 08899 (WASHINGTON STREET BRIDGE). WASHINGTON STREET "WL2" CENTER LINE IS FROM COUNTY ROAD PLAN SC09 1974-027 THE BACK TANGENT OF WHICH IS PARALLEL AND 14 FEET NORTHEASTERLY OF THE "WL" CENTER LINE AND THE FORWARD TANGENT IS PARALLEL AND 19 FEET NORTHEASTERLY OF THE "H" CENTER LINE. THE RECORD DEGREE OF CURVE AND SPIRAL LENGTH WERE HELD ON THE CURVE.

**PLATS USED**  
THE PLAT OF ROSEBURG, VOLUME 1, PAGE 20  
THE RAILROAD ADDITION TO THE CITY OF ROSEBURG, VOLUME 2, PAGE 10

**RECOVERED MONUMENTS NOT SHOWN ON INDIVIDUAL SHEETS**

PT. NO.	OCRS	NORTHING	OCRS EASTING	ELEVATION	STATION	OFFSET (- IS LEFT)	DATE	DESCRIPTION	REFERENCE
1003	138037.589	164365.334	-	-	-	-	3/29/2012	FD. 1 1/8" OD. IRON PIPE 0.7 FT ABOVE SURFACE LEANING WESTERLY GOOD CONDITION	CS 37/72
1032	138985.884	162289.706	-	-	-	-	3/30/2012	FD. 5/8" IRON REBAR THAT PROTRUDES THROUGH YELLOW PLASTIC CAP FLUSH WITH AC. ACCESS GOOD CONDITION	M131-48
1033	138986.399	162288.348	-	-	-	-	3/30/2012	FD. 5/8" IRON REBAR THAT PROTRUDES THROUGH YELLOW PLASTIC CAP FLUSH WITH AC. ACCESS GOOD CONDITION	M131-48
1034	138963.150	162332.696	-	-	-	-	3/30/2012	FD. 1 1/4" YELLOW PLASTIC CAP STAMPED "I.E. ENG" 0.7 FT BELOW SURFACE GOOD CONDITION	M131-48
1045	138948.551	161929.182	-	-	-	-	4/24/2012	FD. CHISLED "X" IN CONC. SIDEWALK AT SE CORNER ODELL AND WINCHESTER STREETS	M131-48
1046	138983.415	162127.173	-	-	-	-	4/24/2012	FD. 1 1/4" YELLOW PLASTIC CAP STAMPED "I.E. ENG" 0.1 FT BELOW SURFACE GOOD CONDITION	M131-48
1047	138984.677	162130.122	-	-	-	-	4/24/2012	FD. 1 1/4" YELLOW PLASTIC CAP STAMPED "I.E. ENG" 0.1 FT ABOVE SURFACE GOOD CONDITION	M131-48
1048	139001.133	162209.184	-	-	-	-	3/30/2012	FD. 5/8" IRON REBAR WITH 1 1/4" YELLOW PLASTIC CAP STAMPED "I.E. ENG" 0.1 FT ABOVE SURFACE GOOD CONDITION	M131-48
1059	139024.266	161842.665	-	-	-	-	4/2/2012	FD. 2" ALUMINUM DISK FLUSH WITH CONCRETE SIDEWALK GOOD CONDITION	CS 58/160-2
1060	139116.160	161831.839	-	-	-	-	4/24/2012	FD. 5/8" IRON REBAR BENT SE 0.2 FT ABOVE SURFACE TIED WHERE ROD ENTERS GROUND POOR CONDITION	M14-40
1061	139104.532	161893.649	-	-	-	-	4/24/2012	FD. 5/8" IRON ROD 0.3 FT BELOW SURFACE GOOD CONDITION	M12-74
1062	139253.368	161874.835	-	-	-	-	4/24/2012	FD. 5/8" IRON REBAR WITH 1 1/4" YELLOW PLASTIC CAP STAMPED "BTS ENG. SURV." 0.3 FT ABOVE SURFACE GOOD CONDITION	RMS-20
1065	139444.294	161790.721	-	-	-	-	4/2/2012	FD. 5/8" IRON REBAR BENT EAST TIED WHERE ROD ENTERS GROUND FLUSH WITH SURFACE POOR CONDITION	M44-61
1095	139561.359	161276.761	-	-	-	-	4/2/2012	FD. 5/8" IRON REBAR BENT NORTHEASTERLY TIED WHERE ENTERS GROUND FLUSH WITH SURFACE POOR CONDITION	M52-33
1097	138344.482	161915.987	-	-	-	-	4/26/2012	FD. TACK IN LEAD WOOL FLUSH IN CONCRETE SIDEWALK GOOD CONDITION	M98-17
1136	137007.266	159791.806	-	-	-	-	4/3/2012	FD. 5/8" IRON REBAR LEANS SOUTHERLY 0.2 FT BELOW SURFACE FAIR CONDITION	M98-17
1140	136952.796	159854.493	-	-	-	-	4/26/2012	FD. 1 1/4" YELLOW PLASTIC CAP STAMP NOT READABLE 0.1 FT. BELOW SURFACE AT FACE OF BLDG. GOOD CONDITION	M146-17
1146	136751.967	160656.821	-	-	-	-	4/25/2012	FD. 1 1/4" STEEL DISK SCRIBED WITH "X" FLUSH IN CONCRETE 0.1 FT BELOW AC. SURFACE GOOD CONDITION	M140-69
1147	136747.920	160657.987	-	-	-	-	4/25/2012	FD. 1 1/4" YELLOW PLASTIC CAP STAMPED "LAND MARK" 0.1 FT BELOW BACK OF CONCRETE SIDEWALK AT SOUTHWEST CORNER OF BLDG. GOOD CONDITION	M146-17
1149	136700.869	160730.471	-	-	-	-	4/25/2012	FD. BRASS WASHER AND SCREW IN TOP OF CONCRETE CURB OF SIDEWALK FLUSH WITH SURFACE GOOD CONDITION AT CORNER OF ROSE ST. AND CASS AVE.	M146-17
1150	136703.023	160743.483	-	-	-	-	4/25/2012	FD. BRASS WASHER AND SCREW IN TOP OF CONCRETE CURB OF SIDEWALK FLUSH WITH SURFACE GOOD CONDITION AT CORNER OF ROSE ST. AND CASS AVE.	M47-51
1161	137553.159	161532.469	-	-	-	-	5/20/2012	FD. 2 3/4" BRASS DISK WITH SCRIBED "X" (HELD) ALSO A PUNCH MARK IN CENTER 0.9 FT BELOW SURFACE IN A 10" DIAMETER MONUMENT BOX GOOD CONDITION AT INTERSECTION OF JACKSON AND DOUGLAS STREETS SET BY CITY OF ROSEBURG	M12-24
1162	137214.247	161353.723	-	-	-	-	5/20/2012	FD. 2 3/4" BRASS DISK WITH SCRIBED "X" (HELD) ALSO A PUNCH MARK IN CENTER DISK IN A 11" DIAMETER MONUMENT BOX AT INTERSECTION OF WASHINGTON AND JACKSON STREETS GOOD CONDITION SET BY CITY OF ROSEBURG	M1-26
1163	136872.732	161173.559	-	-	-	-	5/20/2012	FD. 2 3/4" BRASS DISK WITH SCRIBED "X" (HELD) ALSO A PUNCH MARK IN CENTER 0.7" BELOW SURFACE IN A 10 1/2" DIAMETER MONUMENT BOX GOOD CONDITION AT INTERSECTION OF OAK AND JACKSON STREETS	M1-26
1164	136667.503	160746.901	-	-	-	-	5/20/2012	FD. 2 3/4" BRASS DISK WITH SCRIBED "X" (HELD) ALSO A PUNCH MARK IN CENTER IN A 10 1/2" DIAMETER MONUMENT BOX AT INTERSECTION OF CASS AND ROSE STREETS GOOD CONDITION	M131-16
1166	138310.583	160808.183	-	-	-	-	4/26/2012	FD. 3 1/4" ALUMINUM DISK IN CONCRETE PEDISTAL STAMPED "SHANER ENGINEERING INC. PLS 430 2001 1275 R5W N1/2 S1/4 SEC 39" 0.2 FT BELOW SURFACE GOOD CONDITION	CS 66/8-1
1167	135602.625	160725.693	-	-	-	-	5/3/2012	FD. 3" BRASS DISK STAMPED "DOUGLAS COUNTY SURVEYORS OFFICE 1275 R5W D1C 39 1999" FLUSH IN CONCRETE DRIVE AT 953 MAIN STREET	M57-61
1169	137345.900	164576.119	-	-	-	-	5/20/2012	FD. 2 1/2" OD. IRON PIPE 0.2 FT BELOW AC. SURFACE NEAR CENTER OF DOUGLAS STREET D1C CORNER GOOD CONDITION NW D1C 40	CS 67/33-45
1170	138862.730	160355.368	-	-	-	-	10/3/2012	FD. 2 1/2" BRASS DISK STAMPED "DOUGLAS COUNTY SURVEYOR'S OFFICE 1966 1275 R6W S13/24 R5W S18/519 RESET 1987" SET ATOP 1 1/2" OD. IRON PIPE BADLY BENT SOUTHERLY TIED 1.3 FT. BELOW SURFACE AT BEND	M25-33
1171	137693.720	162304.584	-	-	-	-	5/20/2012	FD. 2 3/4" BRASS DISK WITH SCRIBED "X" 1.25 FT BELOW SURFACE IN A 8 3/4" DIAMETER MONUMENT BOX AT INTERSECTION OF COURT AND FOWLER STREETS GOOD CONDITION	M15-64
1173	138738.239	159183.339	-	-	-	-	2/25/2014	FD. 2 1/4" IRON ROD SET IN CONC. IN A 8" DIAMETER MONUMENT BOX AT INTERSECTION OF MADRONE AND WEST LAUREL WOOD STREETS 0.7" BELOW AC. GOOD CONDITION	M15-64
1174	138933.683	159256.571	-	-	-	-	2/25/2014	FD. 2 1/4" IRON ROD SET IN CONC. IN A 8" DIAMETER MONUMENT BOX AT INTERSECTION OF MADRONE AND W. LILBURN STREETS 0.7" BELOW AC. GOOD CONDITION	M15-64
1175	138850.615	159568.386	-	-	-	-	2/25/2014	FD. 2 1/4" IRON ROD SET IN CONC. IN A 8" DIAMETER MONUMENT BOX AT INTERSECTION OF W. LILBURN AND W. RIVERSIDE STREETS 0.7" BELOW AC. GOOD CONDITION	M134-24
OTAK13	136675.816	160785.647	-	-	-	-	4/26/2012	FD. PK NAIL AND WASHER STAMPED "OTAK CONTROL 13" FLUSH IN CONCRETE SIDEWALK AT NORTHEAST CORNER OF INTERSECTION AT ROSE ST. AND CASS ST.	

**CONTROL MONUMENTS NOT SHOWN ON INDIVIDUAL SHEETS**

PT. NO.	OCRS	NORTHING	OCRS EASTING	ELEVATION	STATION	OFFSET (- IS LEFT)	DATE	DESCRIPTION	REFERENCE
17	140141.692	161756.820	505.23	-	-	-	4/18/2012	SET 1" COPPER DISK STAMPED "ODOT CONTROL 17" FLUSH WITH CONCRETE SIDEWALK	
20	138435.565	158680.865	462.22	-	-	-	2/11/2014	SET 1" COPPER DISK STAMPED "ODOT CONTROL 20" FLUSH WITH CONCRETE SIDEWALK	
21	138750.008	158418.462	455.40	-	-	-	2/11/2014	SET 1" COPPER DISK STAMPED "ODOT CONTROL 21" FLUSH WITH CONCRETE SIDEWALK	
500	137291.403	164405.554	-	-	-	-	4/5/2012	SET MAG. NAIL AND WASHER STAMPED "ODOT 500" FLUSH IN CONCRETE WALK BETWEEN CEMETERY ENTRANCES	
501	137105.290	164484.184	-	-	-	-	4/5/2012	SET MAG. NAIL AND WASHER STAMPED "ODOT 501" FLUSH WITH AC. SURFACE ON CEMETERY DRIVE	
502	137373.754	164779.281	-	-	-	-	4/5/2012	SET MAG. NAIL AND WASHER STAMPED "ODOT 502" FLUSH IN SIDEWALK AT 1894 DOUGLAS STREET	
503	136137.050	160990.532	-	-	-	-	4/5/2012	SET MAG. NAIL AND WASHER STAMPED "ODOT 503" IN CRACK OF GUTTER AT INTERSECTIONS OF LANE AND MAIN STREETS	
504	135588.036	160659.187	-	-	-	-	4/5/2012	SET MAG. NAIL AND WASHER STAMPED "ODOT 504" FLUSH IN CONCRETE WALK ACROSS THE STREET FROM 953 MAIN STREET	
505	135962.602	160842.265	-	-	-	-	4/5/2012	SET MAG. NAIL AND WASHER STAMPED "ODOT 505" FLUSH IN AC. DRIVE	
536	138598.312	159164.357	-	-	-	-	2/25/2014	SET MAG. NAIL IN AC. ALLEY	
537	138550.536	159604.648	-	-	-	-	2/25/2014	SET MAG. NAIL AND WASHER IN AC. STAMPED "ODOT 537"	
ANNIE	138576.963	158281.790	-	-	-	-	2/11/2014	FD. 3" DIA. BRASS DISK IN CONCRETE GORE BETWEEN NB ONRAMP & NB 1-5 STAMPED "DOUGLAS COUNTY SURVEYORS OFFICE ANNIE 1982" GOOD CONDITION	DCSO, CONTROL MON.
HILL	140324.974	160724.319	-	-	-	-	4/18/2012	SET 1" COPPER DISK IN CONCRETE HATCHED UTILITY VAULT STAMPED "ODOT CONTROL HILL"	
WB	138988.901	161850.432	453.78	-	-	-	4/18/2012	FD. 1" COPPER DISK STAMPED "ODOT CONTROL 8" FLUSH WITH CONCRETE SIDEWALK GOOD CONDITION	ST. HWY. 138-006
W9	139302.758	161865.223	463.15	-	-	-	4/18/2012	FD. 1" COPPER DISK STAMPED "ODOT CONTROL 9" FLUSH WITH CONCRETE SIDEWALK GOOD CONDITION	ST. HWY. 138-006

SI FEET OREGON DEPARTMENT OF TRANSPORTATION  
HORIZONTAL CONTROL, RECOVERY AND RETRACEMENT MAP  
FFO - OR 138E: CORRIDOR SOLUTIONS (ROSEBURG) SECTION  
NORTH UMPQUA HWY. NO. 138, OR138, M.P. -0.62 TO 0.57  
DOUGLAS COUNTY  
FILE: 13996RW.DGN :: CRR

FOR ODOT REGION 3 SEPTEMBER 24, 2015  
3500 NW. STEWART PKWY.  
ROSEBURG, OR. 97470 SHEET 2 OF 14

ST. HWY. 138-015 B



Date: 9-29-2015 By: JC

This survey consist of:

Map: ST HWY 138-015 A-N

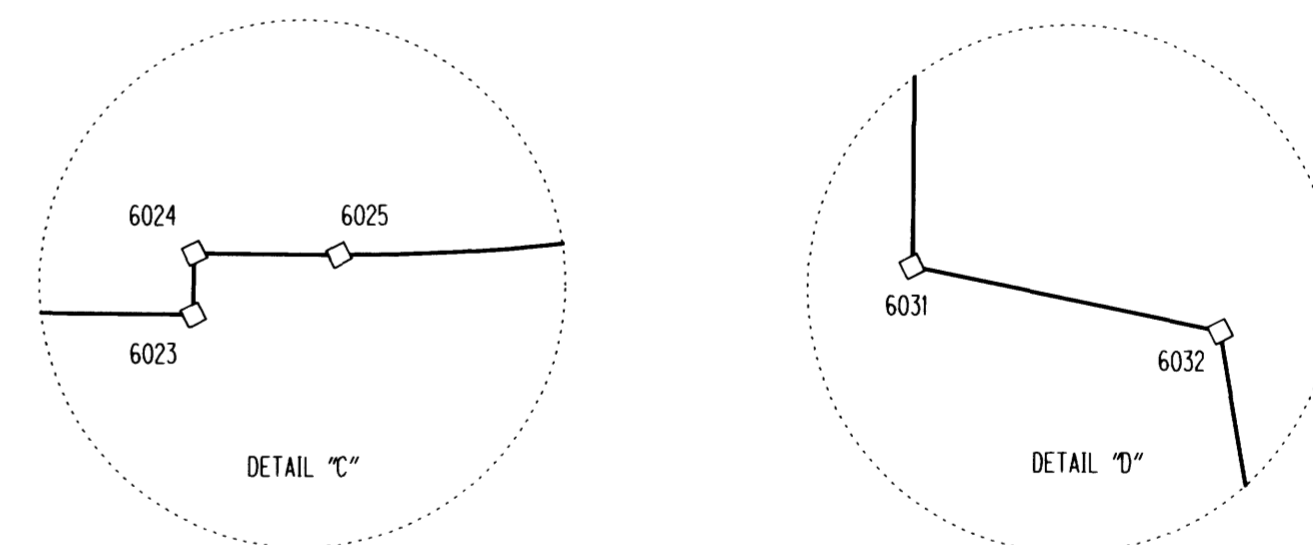
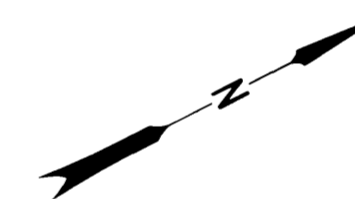
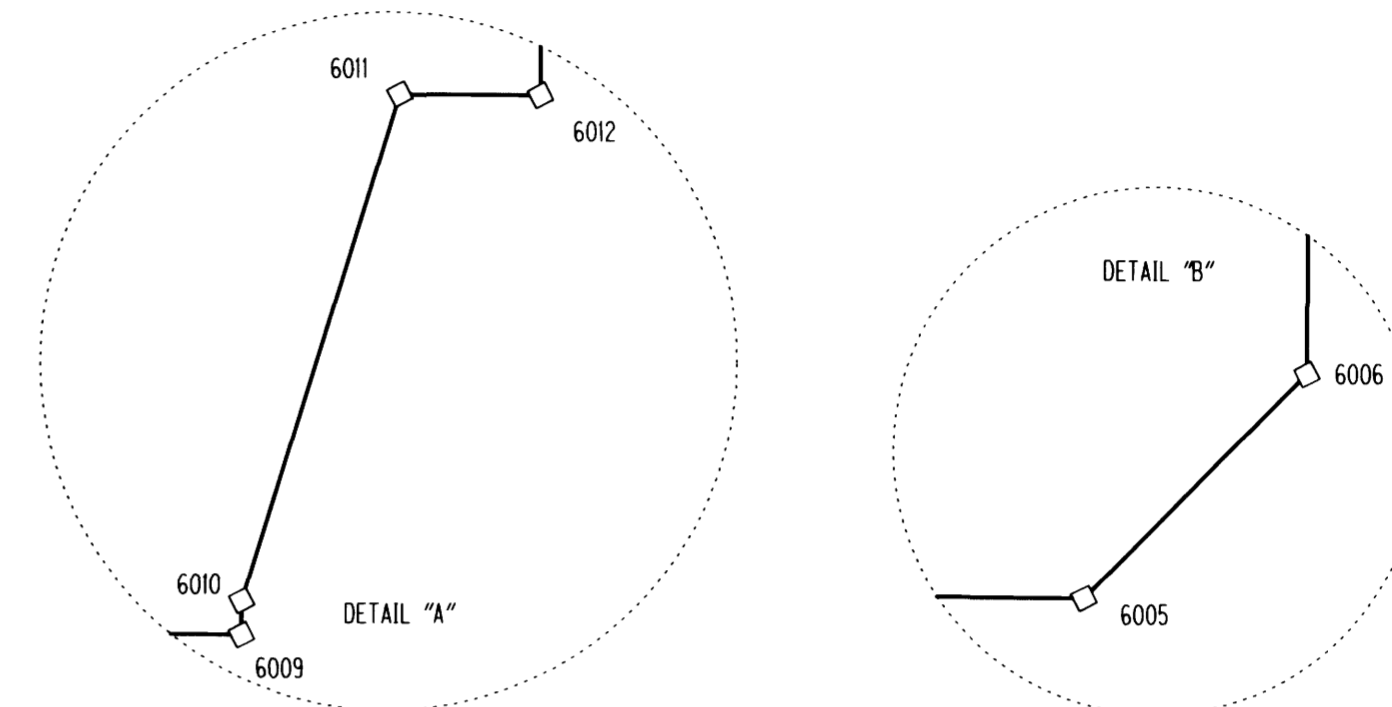
Narrative: \_\_\_\_\_

Corner Rpt: \_\_\_\_\_

DOUGLAS COUNTY  
SURVEYOR

CALCULATED POINTS FROM SHEETS 3 & 5

PT. NO.	OCRS NORTHING	OCRS EASTING	STATION	OFFSET (- IS LEFT)	DESCRIPTION
6000	136970.257	160233.863	"P1"1574+82.72	-30.00	INTERSECTION OF RIGHT OF WAY OF CASS ST. AND DRG. 5B-5-21A
6001	136942.412	160287.011	"P1"1574+83.06	30.00	INTERSECTION OF RIGHT OF WAY OF CASS ST. AND DRG. 5B-5-21A
6002	136838.493	160485.356	1581+91.27	-30.00	INTERSECTION OF RIGHT OF WAY OF CASS ST. AND DRG. 5B-5-21A
6003	136810.640	160538.499	1581+91.52	30.00	INTERSECTION OF RIGHT OF WAY OF CASS ST. AND DRG. 5B-5-21A
6004	137093.525	160688.245	1585+11.59	30.00	INTERSECTION OF RIGHT OF WAY OF OAK AVE. AND DRG. 5B-5-21A
6005	137118.019	160633.322	1585+07.55	-30.00	RIGHT OF WAY ANGLE POINT DRG. 10B-14-16
6006	137123.231	160631.635	1585+11.36 "O"0+17.86	-33.93 -30.00	INTERSECTION OF RIGHT OF WAY OF OAK AVE. AND DRG. 10B-14-16
6007	137223.903	160439.791	"P1"1578+03.33 "O"2+34.51	32.90 -30.00	INTERSECTION OF RIGHT OF WAY OF OAK AVE. AND DRG. 10B-14-16
6008	137221.527	160435.241	"P1"1577+99.09	30.00	RIGHT OF WAY ANGLE POINT DRG. 10B-14-16
6009	137248.616	160381.691	"P1"1577+97.90	-30.00	RIGHT OF WAY ANGLE POINT DRG. 10B-14-16
6010	137248.894	160381.168	"P1"1577+97.90	-30.59	RIGHT OF WAY ANGLE POINT DRG. 10B-14-16
6011	137255.344	160374.618	"P1"1578+00.53	-39.40	RIGHT OF WAY ANGLE POINT DRG. 10B-14-16
6012	137257.502	160375.764	"P1"1578+02.97 "O"3+06.82	-39.40 -30.00	INTERSECTION OF RIGHT OF WAY OF OAK AVE. AND DRG. 10B-14-16
6013	137307.953	160408.747	"P2"1578+63.00 "O"3+01.06	-40.47 30.00	INTERSECTION OF RIGHT OF WAY OF OAK AVE. AND DRG. 10B-14-16
6014	137309.961	160415.770	"P2"1578+68.06	-35.21	INTERSECTION OF RIGHT OF WAY OF DEED 316-648 AND DRG. 10B-14-16
6015	137352.522	160439.271	"P2"1579+16.58	-34.43	RIGHT OF WAY ANGLE POINT DEED 316-648
6016	137406.734	160475.208	"P2"1579+79.34	-30.00	INTERSECTION OF RIGHT OF WAY OF DEED 316-648 AND DRG. 5B-5-21A
6017	137283.186	160475.380	"P2"1578+72.37	30.00	RIGHT OF WAY ANGLE POINT DRG. 10B-14-16
6018	137270.967	160479.229	"P2"1578+63.39 "O"2+21.46	39.13 30.00	INTERSECTION OF RIGHT OF WAY OF OAK AVE. AND DRG. 10B-14-16
6019	137180.396	160651.825	1585+71.33 "O"0+26.54	-42.83 30.00	INTERSECTION OF RIGHT OF WAY OF OAK AVE. AND DRG. 10B-14-16
6020	137185.290	160668.932	1585+83.66	-30.00	RIGHT OF WAY ANGLE POINT DRG. 10B-14-16
6021	137146.554	160716.316	1585+71.59	30.00	INTERSECTION OF RIGHT OF WAY OF OAK AVE. AND DRG. 5B-5-21A
6022	137435.756	160869.404	1588+98.82	30.00	INTERSECTION OF RIGHT OF WAY OF WASHINGTON ST. AND DRG. 5B-5-21A
6023	137435.240	160801.243	1588+66.47	-30.00	RIGHT OF WAY ANGLE POINT DRG. 10B-14-16
6024	137435.740	160800.298	1588+66.47	-31.07	RIGHT OF WAY ANGLE POINT DRG. 10B-14-16
6025	137437.961	160801.473	1588+68.98	-31.07	RIGHT OF WAY BEGINNING 31.82' RADIUS POINT DRG. 10B-14-16
6026	137456.499	160804.962	1588+87.00	-36.66	RIGHT OF WAY MIDPOINT 31.82' RADIUS DRG. 10B-14-16
6027	137473.756	160797.342	1588+98.69 "M"30+11.37	-51.47 30.00	INTERSECTION OF RIGHT OF WAY OF WASHINGTON ST. AND DRG. 10B-14-16 AT END OF 31.82' RADIUS
6028	137508.679	160731.110	"P2"1582+54.25 "M"29+36.50	39.94 30.00	INTERSECTION OF RIGHT OF WAY OF WASHINGTON ST. AND DRG. 10B-14-16
6029	137511.108	160707.252	"P2"1582+31.93	30.00	INTERSECTION OF RIGHT OF WAY OF DRG. 5B-5-21A AND DRG. 10B-14-16
6030	137552.746	160647.535	"P2"1581+90.85 "M"28+42.02	-30.00 30.00	INTERSECTION OF RIGHT OF WAY OF WASHINGTON ST. AND DRG. 5B-5-21A
6031	137586.998	160711.216	"P2"1582+59.88 "M"28+82.37	-40.67 -30.00	INTERSECTION OF RIGHT OF WAY OF WASHINGTON ST. AND DRG. 10B-14-16
6032	137591.243	160714.660	"P2"1582+64.44	-43.63	RIGHT OF WAY ANGLE POINT DRG. 10B-14-16
6033	137586.343	160730.061	"P2"1582+77.53	-34.19	INTERSECTION OF RIGHT OF WAY OF DRG. 1R-4-642 AND DRG. 10B-14-16
6034	137587.187	160742.902	"P2"1582+90.00	-31.00	RIGHT OF WAY ANGLE POINT DRG. 1R-4-642
6035	137488.785	160897.475	1589+58.82	30.00	INTERSECTION OF RIGHT OF WAY OF WASHINGTON ST. AND DRG. 5B-5-21A
6036	137763.221	161042.748	1592+69.33	30.00	INTERSECTION OF RIGHT OF WAY OF DEED 793-430 AND DRG. 5B-5-21A
6037	137767.878	161057.886	1592+80.53	41.20	INTERSECTION OF RIGHT OF WAY OF DEED 793-430 AND DOUGLAS AVE.
6038	137795.627	160971.648	"P2"1586+36.00	-31.00	RIGHT OF WAY ANGLE POINT DRG. 1R-4-642
6039	137816.113	160965.800	"P2"1586+51.37	-45.75	INTERSECTION OF RIGHT OF WAY OF DOUGLAS AVE. AND DRG. 1R-4-642
6040	137870.670	160990.954	"PS"1593+38.36	-63.58	INTERSECTION OF RIGHT OF WAY OF DOUGLAS AVE. AND DRG. 1R-4-642
6041	137880.891	161018.249	"PS"1593+60.00	-45.00	RIGHT OF WAY ANGLE POINT DRG. 1R-4-642
6042	137814.677	161097.852	1593+40.59	54.63	RIGHT OF WAY ANGLE POINT DRG. 5B-5-21A
6043	137958.777	161067.063	1594+53.54 "PS"1594+49.13	-40.00 -45.00	INTERSECTION OF RIGHT OF WAY OF DRG. 1R-4-642 AND DRG. 5B-5-21A
6044	138130.835	161270.417	1597+00.75	59.23	RIGHT OF WAY ANGLE POINT DRG. 5B-5-21A
6045	138345.400	161271.632	1598+91.08	-40.00	RIGHT OF WAY ANGLE POINT DRG. 5B-5-21A
6046	138363.405	161214.796	1598+80.51	-98.69	INTERSECTION OF RAILROAD RIGHT OF WAY (30' LT. OF CENTER OF TRACKS) AND RIGHT OF WAY DRG. 5B-5-21A
6047	138310.814	161369.495	1599+05.87	62.73	RIGHT OF WAY ANGLE POINT DRG. 5B-5-21A
6048	138310.781	161383.795	1599+12.41	75.42	RIGHT OF WAY ANGLE POINT DRG. 5B-5-21A
6049	138397.306	161461.672	1600+23.04	105.39	RIGHT OF WAY ANGLE POINT DRG. 5B-5-21A
6050	138500.687	161326.684	1600+56.10	-61.36	COMMON RAILROAD RIGHT OF WAY (30' LT. OF CENTER OF TRACKS) AND RIGHT OF WAY DRG. 5B-5-21A
6051	138534.202	161366.312	1601+04.18	-40.00	COMMON RAILROAD RIGHT OF WAY AND RIGHT OF WAY DRG. 5B-5-21A
6052	138563.187	161379.636	1601+38.75	-40.00	COMMON RAILROAD RIGHT OF WAY AND RIGHT OF WAY DRG. 5B-5-21A
6053	138565.519	161369.325	1601+36.58	-50.36	COMMON RAILROAD RIGHT OF WAY (30' LT. OF CENTER OF TRACKS) AND RIGHT OF WAY DRG. 5B-5-21A
6054	138447.230	161517.641	"DL"2+94.64	90.48	RIGHT OF WAY ANGLE POINT DRG. 5B-5-21A
6055	138477.810	161517.189	"DL"2+97.18	60.00	RIGHT OF WAY ANGLE POINT DRG. 5B-5-21A
6056	138482.979	161569.754	"DL"3+50.00	60.00	RIGHT OF WAY ANGLE POINT SEE DRG. 5B-5-21A AND DEED 384-394 ACQUIRED BY CITY
6057	138492.931	161568.775	"DL"3+50.00	50.00	RIGHT OF WAY ANGLE POINT SEE DRG. 5B-5-21A AND DEED 384-394 ACQUIRED BY CITY
6144	137169.462	160543.537	"O"1+17.35	-30.00	INTERSECTION OF THE RIGHT OF WAY OF PLATTED OAK AVE. AND THE ALLEY
6145	137177.673	160527.890	"O"1+35.02	-30.00	INTERSECTION OF THE RIGHT OF WAY OF PLATTED OAK AVE. AND THE ALLEY



DETAILS FOR SHEET 3

REGISTERED  
PROFESSIONAL  
LAND SURVEYOR

*Marshall R. Wagstaff*

OREGON  
JANUARY 9, 2001  
MARSHALL R. WAGSTAFF  
49476

EXPIRES: 6/30/2016

SI FEET  
**T** OREGON DEPARTMENT OF TRANSPORTATION  
HORIZONTAL CONTROL, RECOVERY AND RETRACEMENT MAP  
FFO - OR 138E: CORRIDOR SOLUTIONS (ROSEBURG) SECTION  
NORTH UMPQUA HWY. NO. 138, OR138, M.P. -0.62 TO 0.57  
DOUGLAS COUNTY  
FILE: 13996RW.DGN :: CRR

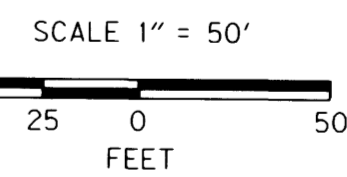
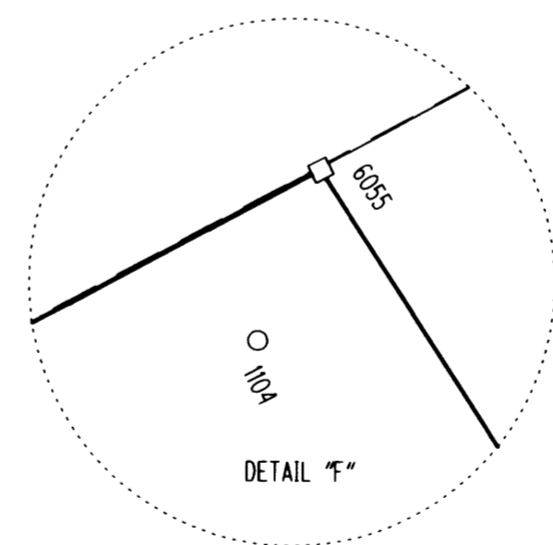
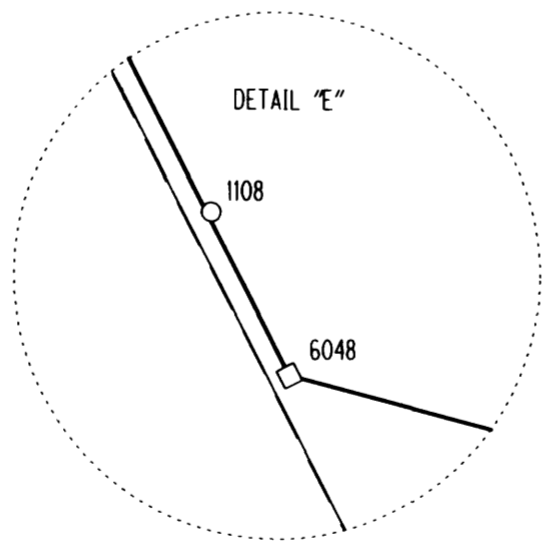
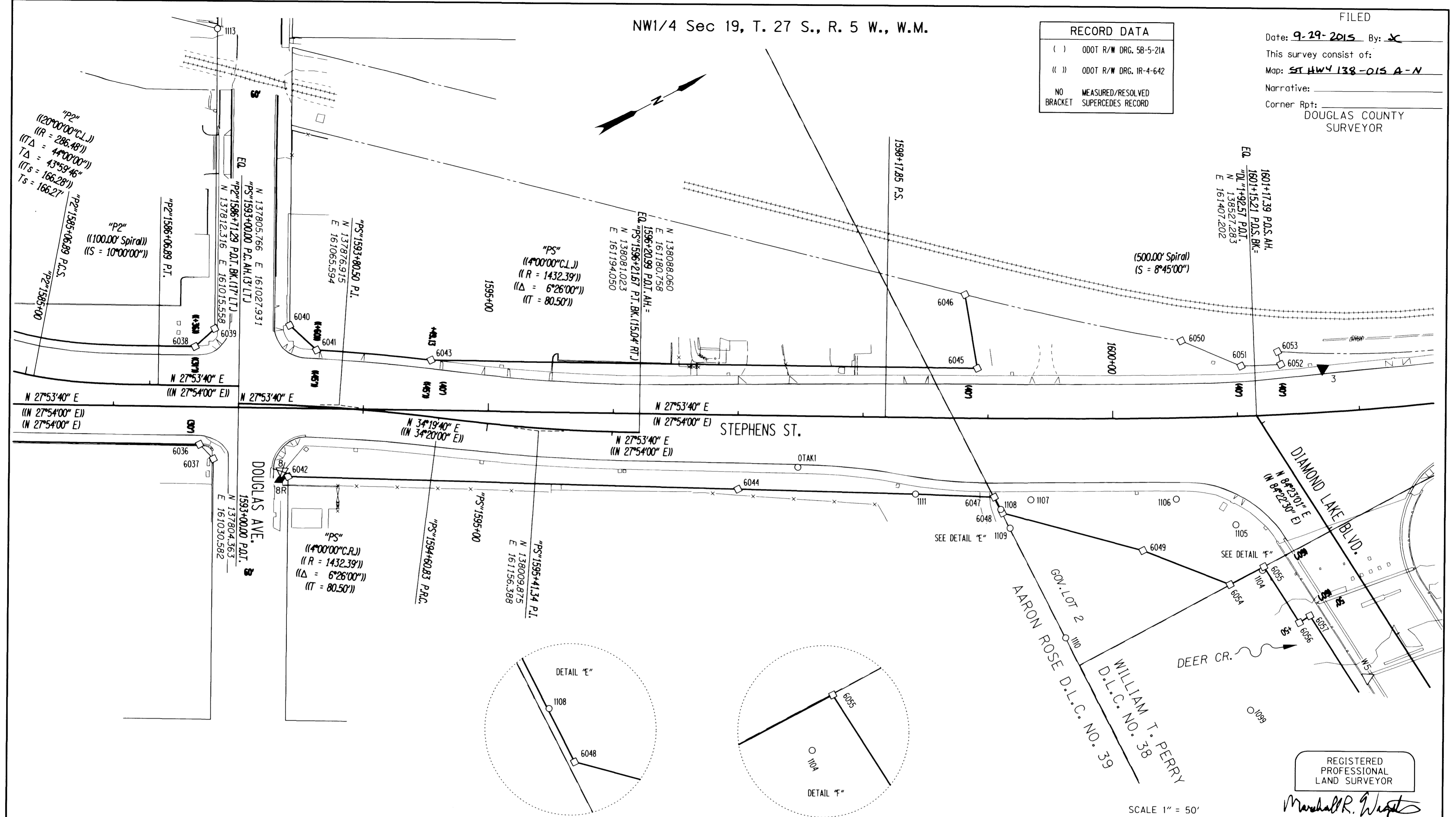
FOR ODOT REGION 3  
3500 NW. STEWART PKWY.  
ROSEBURG, OR. 97470

SEPTEMBER 24, 2015  
SCALE: 1" = 50'  
SHEET 4 OF 14

NW1/4 Sec 19, T. 27 S., R. 5 W., W.M.

RECORD DATA	
( )	ODOT R/W DRG. 58-5-21A
( )	ODOT R/W DRG. IR-4-642
NO	MEASURED/RESOLVED
BRACKET	SUPERCEDES RECORD

FILED  
 Date: 9-29-2015 By: JC  
 This survey consist of:  
 Map: ST HWY 138-015 A-N  
 Narrative:  
 Corner Rpt:  
 DOUGLAS COUNTY  
 SURVEYOR



REGISTERED  
 PROFESSIONAL  
 LAND SURVEYOR  
 Marshall R. Wagstaff  
 OREGON  
 JANUARY 9, 2001  
 MARSHALL R. WAGSTAFF  
 49476  
 EXPIRES: 6/30/2016

RECOVERED MONUMENTS FOR CALCULATED POINTS SEE SHEET 4

PT. NO.	OCRS	NORTHING	OCRS EASTING	ELEVATION	STATION	OFFSET (- IS LEFT)	DATE	DESCRIPTION	REFERENCE
1099	138416.291	161614.434	-	-	-	-	4/25/2012	FD. 5/8" IRON REBAR BENT SOUTHEAST TIED WHERE ENTERS GROUND FLUSH WITH SURFACE FAIR CONDITION	M52-33
1104	138475.493	161519.329	-	-	"DL"2+99.08	62.52	4/2/2012	FD. 5/8" IRON ROD WITH 1" OD. PIPE OVERTOP. PIPE EXTENDS 2.0 FT ABOVE SURFACE TIED ALONGSIDE PIPE GOOD CONDITION	M40-60
1105	138473.103	161477.420	-	-	"DL"2+57.14	60.79	4/2/2012	FD. 5/8" IRON ROD BENT SOUTH 0.4 FT BELOW SURFACE TIED WHERE ROD ENTERS GROUND POOR CONDITION	M40-60
1106	138439.739	161437.414	-	-	1600+49.78	64.88	4/2/2012	FD. 5/8" IRON ROD BENT EASTERLY 0.5 FT BELOW SURFACE TIED WHERE ROD ENTERS GROUND POOR CONDITION	M40-60
1107	138335.734	161384.947	-	-	1599+34.88	64.92	4/2/2012	FD. 5/8" IRON ROD BENT EASTERLY 0.5 FT BELOW SURFACE TIED WHERE ROD ENTERS GROUND POOR CONDITION	M40-60
1108	138310.864	161380.647	-	-	1599+11.04	72.59	4/2/2012	FD. 5/8" IRON ROD BENT S.E. 0.6 FT BELOW SURFACE TIED WHERE ROD ENTERS GROUND POOR CONDITION	M40-60
1109	138310.757	161397.390	-	-	1599+18.62	87.48	4/2/2012	FD. 5/8" IRON ROD BENT SOUTHERLY 0.6 FT BELOW SURFACE TIED WHERE ROD ENTERS GROUND POOR CONDITION	M40-60
1110	138310.540	161495.747	-	-	-	-	4/2/2012	FD. 1 1/4" YELLOW PLASTIC CAP STAMPED "HIBBS LS 52989" 0.1 FT BELOW SURFACE GOOD CONDITION	VOL. 23, PG. 10A
1111	138255.651	161338.653	-	-	1598+42.96	61.15	4/2/2012	FD. 1 1/4" YELLOW PLASTIC CAP STAMPED "HIBBS LS 52989" 1.0 FT BELOW SURFACE GOOD CONDITION	VOL. 23, PG. 10A
1113	137927.068	160754.008	-	-	-	-	4/3/2012	FD. 1 1/4" YELLOW PLASTIC CAP STAMPED "R. BROWN PLS 2391" SET FLUSH WITH SURFACE GOOD CONDITION	M146-14B
OTAK1	138181.511	161276.594	-	-	1597+48.42	40.98	4/3/2012	FD. PK NAIL AND WASHER STAMPED "OTAK CONTROL 1" FLUSH IN CONCRETE SIDEWALK GOOD CONDITION	M134-24

PT. NO.	OCRS	NORTHING	OCRS EASTING	ELEVATION	STATION	OFFSET (- IS LEFT)	DATE	DESCRIPTION	REFERENCE
3	138591.467	161397.715	455.35	1601+72.45	-34.96	4/18/2012	SET 1" COPPER DISK STAMPED "ODOT CONTROL 3" FLUSH WITH CONCRETE SIDEWALK	-	
8	137812.079	161092.096	465.16	1593+35.60	50.76	4/18/2012	DESTROYED 1" COPPER DISK STAMPED "ODOT CONTROL 8" FLUSH WITH CONCRETE SIDEWALK	-	
8R	137807.834	161097.270	465.34	1593+34.27	57.32	7/13/2015	SET 1" COPPER DISK STAMPED "ODOT CONTROL 8R" FLUSH WITH CONCRETE SIDEWALK TIED USING 3 POINT RESECTION	-	
WS	138511.532	161633.969	452.87	"DL"4+16.70	37.87	4/2/2012	FD. 1" COPPER DISK STAMPED "ODOT CONTROL 5" FLUSH WITH CONCRETE SIDEWALK GOOD CONDITION	ST. HWY. 138-006	

POINT LEGEND	
○	FOUND MONUMENT
□	CALCULATED POINT
△	FOUND NETWORK POINT
▲	SET NETWORK POINT
⊗	DESTROYED NETWORK POINT
◆	SET STRATEGIC POINT

FOR MONUMENTS NOT SHOWN ON INDIVIDUAL SHEETS SEE SHEETS 1 AND 2

FOR LINE LEGEND SEE SHEET 1

SI FEET  
**T** OREGON DEPARTMENT OF TRANSPORTATION  
 HORIZONTAL CONTROL, RECOVERY AND RETRACEMENT MAP  
 FFO - OR 138E: CORRIDOR SOLUTIONS (ROSEBURG) SECTION  
 NORTH UMPQUA HWY. NO. 138, OR138, M.P. -0.62 TO 0.57  
 DOUGLAS COUNTY  
 FILE: 13996RW.DGN :: CRR

FOR ODOT REGION 3  
 3500 NW. STEWART PKWY.  
 ROSEBURG, OR. 97470

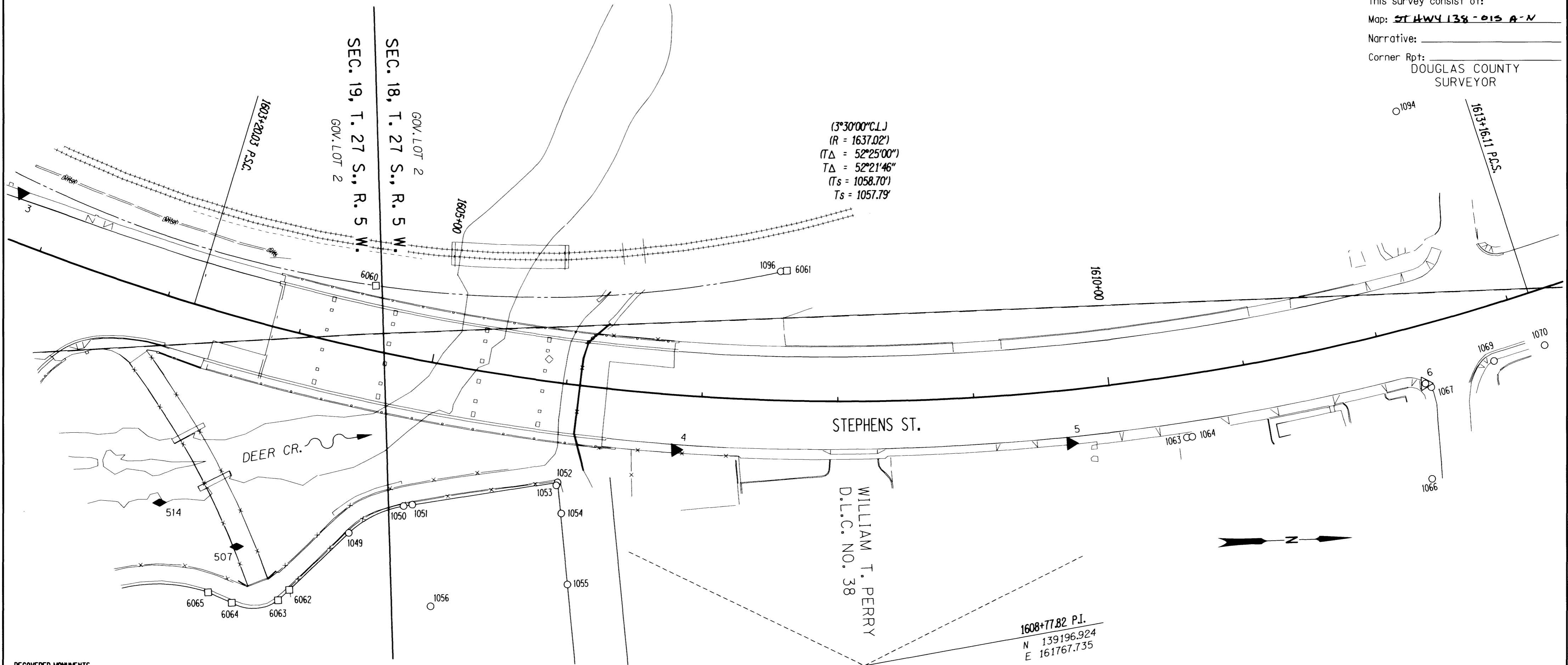
SEPTEMBER 24, 2015  
 SCALE: 1" = 50'  
 SHEET 5 OF 14

ST. HWY. 138-015 E

SW1/4 Sec 18 & NW1/4 Sec 19, T. 27 S., R. 5 W., W.M.

FILED

Date: 9-29-2015 By: *X*  
 This survey consist of:  
 Map: ST HWY 138-015 A-N  
 Narrative:  
 Corner Rpt: DOUGLAS COUNTY SURVEYOR



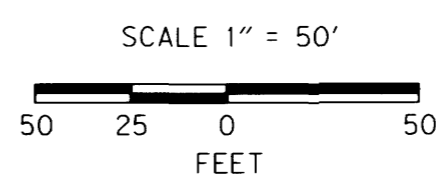
RECOVERED MONUMENTS								
PT. NO.	OCRS NORTHING	OCRS EASTING	ELEVATION	STATION	OFFSET (- IS LEFT)	DATE	DESCRIPTION	REFERENCE
1049	138821.844	161656.331	-	-	-	4/2/2012	FD. 1 1/4" YELLOW PLASTIC CAP STAMPED "I.E. ENGINEERING" 0.4 FT ABOVE SURFACE GOOD CONDITION	M142-49
1050	138862.747	161638.058	-	-	-	4/25/2012	FD. 1 1/4" YELLOW PLASTIC CAP STAMPED "I.E. ENGINEERING" 0.2 FT BELOW SURFACE GOOD CONDITION	M142-49
1051	138869.215	161637.263	-	-	-	4/25/2012	FD. 1 1/4" YELLOW PLASTIC CAP STAMPED "I.E. ENGINEERING" 0.6 FT BELOW SURFACE GOOD CONDITION	M142-49
1052	138976.535	161624.719	-	1606+02.43	72.69	4/2/2012	FD. 1 1/4" YELLOW PLASTIC CAP STAMPED "I.E. ENGINEERING" 0.1 FT BELOW SURFACE GOOD CONDITION	M142-49
1053	138975.473	161626.837	-	1606+01.75	74.95	4/2/2012	FD. 5/8" IRON ROD 0.7 FT BELOW SURFACE GOOD CONDITION	UNKNOWN
1054	138978.320	161647.604	-	1606+07.57	95.00	4/25/2012	FD. 1/2" IRON REBAR 0.2 FT BELOW SURFACE GOOD CONDITION	M67-35
1055	138980.930	161699.959	-	-	-	4/25/2012	FD. 1 1/4" YELLOW PLASTIC CAP STAMPED "I.E. ENGINEERING" 0.3 FT BELOW SURFACE GOOD CONDITION	M142-49
1056	138879.772	161712.532	-	-	-	4/25/2012	FD. 1 1/4" YELLOW PLASTIC CAP STAMPED "I.E. ENGINEERING" 0.4 FT BELOW SURFACE GOOD CONDITION	M142-49
1063	139440.304	161609.517	-	1610+50.90	45.81	4/2/2012	FD. 5/8" IRON REBAR 0.1 FT ABOVE SURFACE GOOD CONDITION	RM3-20
1064	139444.305	161609.126	-	1610+54.81	45.88	4/2/2012	FD. 5/8" IRON REBAR WITH 1 1/4" YELLOW PLASTIC CAP STAMPED "LAND MARK PLS 2287" 0.1 FT ABOVE SURFACE GOOD CONDITION	M162-63
1066	139619.528	161646.594	-	-	-	4/25/2012	FD. 1 1/4" YELLOW PLASTIC CAP STAMPED "LAND MARK PLS 2287" 0.2 FT ABOVE SURFACE GOOD CONDITION	M162-63
1067	139621.413	161579.319	-	1612+29.58	46.12	4/25/2012	FD. 1 1/2" ALUM. CAP STAMPED "OREG. STATE HWY. DEPT. 1612-27" 0.2 FT BELOW A.C. GOOD CONDITION AT SE CORNER OF WRIGHT AVE AND STEPHENS ST.	DRG 5B-5-21A
1069	139668.152	161561.914	-	1612+77.83	40.14	4/2/2012	FD. 5/8" IRON REBAR FLUSH WITH SURFACE GOOD CONDITION	M131-33
1070	139705.839	161551.759	-	1613+15.93	40.11	4/2/2012	FD. MAG NAIL IN A/C	M131-33
1094	139603.187	161375.944	-	-	-	4/25/2012	FD. 1 3/4" OD. IRON PIPE 3.4 FT ABOVE SURFACE GOOD CONDITION IN MIDDLE OF LARGE MAPLE TREE LEANS SLIGHTLY SW TIED ON TOP	M44-61
1096	139146.404	161476.042	-	1607+55.20	-94.67	4/26/2012	FD. 5/8" IRON REBAR 0.2 FT ABOVE SURFACE GOOD CONDITION	M44-61

CONTROL MONUMENT								
PT. NO.	OCRS NORTHING	OCRS EASTING	ELEVATION	STATION	OFFSET (- IS LEFT)	DATE	DESCRIPTION	REFERENCE
4	139063.867	161604.223	464.24	1606+83.36	40.46	4/18/2012	SET 1" COPPER DISK STAMPED "ODOT CONTROL 4" FLUSH WITH CONCRETE SIDEWALK	-
5	139354.902	161610.403	474.91	1609+67.89	39.27	4/18/2012	SET 1" COPPER DISK STAMPED "ODOT CONTROL 5" FLUSH WITH CONCRETE SIDEWALK	-
6	139617.117	161576.523	488.61	1612+26.10	42.45	4/25/2012	FD. 2 3/4" BRASS DISK STAMPED "STATE HIGHWAY DEPARTMENT REFERENCE RP POST 596.77 FT BACK OF PT" FLUSH IN CONCRETE CURB GOOD CONDITION	DRG 5B-5-21A
507	138738.992	161663.275	-	-	-	6/5/2012	SET 1" COPPER DISK STAMPED "ODOT CONTROL 507"	-
514	138683.544	161628.796	-	-	-	6/6/2012	FD. 1 1/4" IRON ROD 0.4 FT ABOVE SURFACE	UNKNOWN

CALCULATED POINTS								
PT. NO.	OCRS NORTHING	OCRS EASTING	ELEVATION	STATION	OFFSET (- IS LEFT)	DATE	DESCRIPTION	REFERENCE
6060	138848.621	161475.335	-	1604+47.46	-47.04	-	COMMON RAILROAD RIGHT OF WAY (30' LT. OF CENTER OF TRACKS) AND RIGHT OF WAY DRG. 5B-5-21A	-
6061	139150.920	161475.633	-	1607+59.96	-95.38	-	COMMON RAILROAD RIGHT OF WAY (30' LT. OF CENTER OF TRACKS) AND RIGHT OF WAY DRG. 5B-5-21A	-
6062	138776.569	161696.455	-	-	-	-	RIGHT OF WAY SEE DEED INSTR. NO. 2008-017131	-
6063	138768.001	161703.807	-	-	-	-	RIGHT OF WAY SEE DEED INSTR. NO. 2008-017131	-
6064	138733.956	161704.403	-	-	-	-	RIGHT OF WAY SEE DEED INSTR. NO. 2008-017131	-
6065	138716.881	161696.162	-	-	-	-	RIGHT OF WAY SEE DEED INSTR. NO. 2008-017131	-



- POINT LEGEND**
- FOUND MONUMENT
  - CALCULATED POINT
  - ▲ SET NETWORK POINT
  - △ FOUND MONUMENT USED AS NETWORK POINT
  - ◆ SET STRATEGIC POINT

FOR MONUMENTS NOT SHOWN ON INDIVIDUAL SHEETS SEE SHEETS 1 AND 2  
 FOR LINE LEGEND SEE SHEET 1

RECORD DATA	
( )	ODOT R/W DRG. 5B-5-21A
NO BRACKET	MEASURED/RESOLVED SUPERCEDES RECORD

REGISTERED PROFESSIONAL LAND SURVEYOR  
*Marshall R. Wagstaff*  
 OREGON  
 JANUARY 9, 2001  
 MARSHALL R. WAGSTAFF  
 49476  
 EXPIRES: 6/30/2016

**SI FEET**  
**OREGON DEPARTMENT OF TRANSPORTATION**  
 HORIZONTAL CONTROL, RECOVERY AND RETRACEMENT MAP  
 FFO - OR 138E: CORRIDOR SOLUTIONS (ROSEBURG) SECTION  
 NORTH UMPQUA HWY. NO. 138, OR138, M.P. -0.62 TO 0.57  
 DOUGLAS COUNTY  
 FILE: 13996RW.DGN :: CRR

FOR ODOT REGION 3  
 3500 NW. STEWART PKWY.  
 ROSEBURG, OR. 97470

SEPTEMBER 24, 2015  
 SCALE: 1" = 50'  
 SHEET 6 OF 14

SW1/4 Sec 18, T. 27 S., R. 5 W., W.M.

FILED

Date: 9-29-2015 By: JC

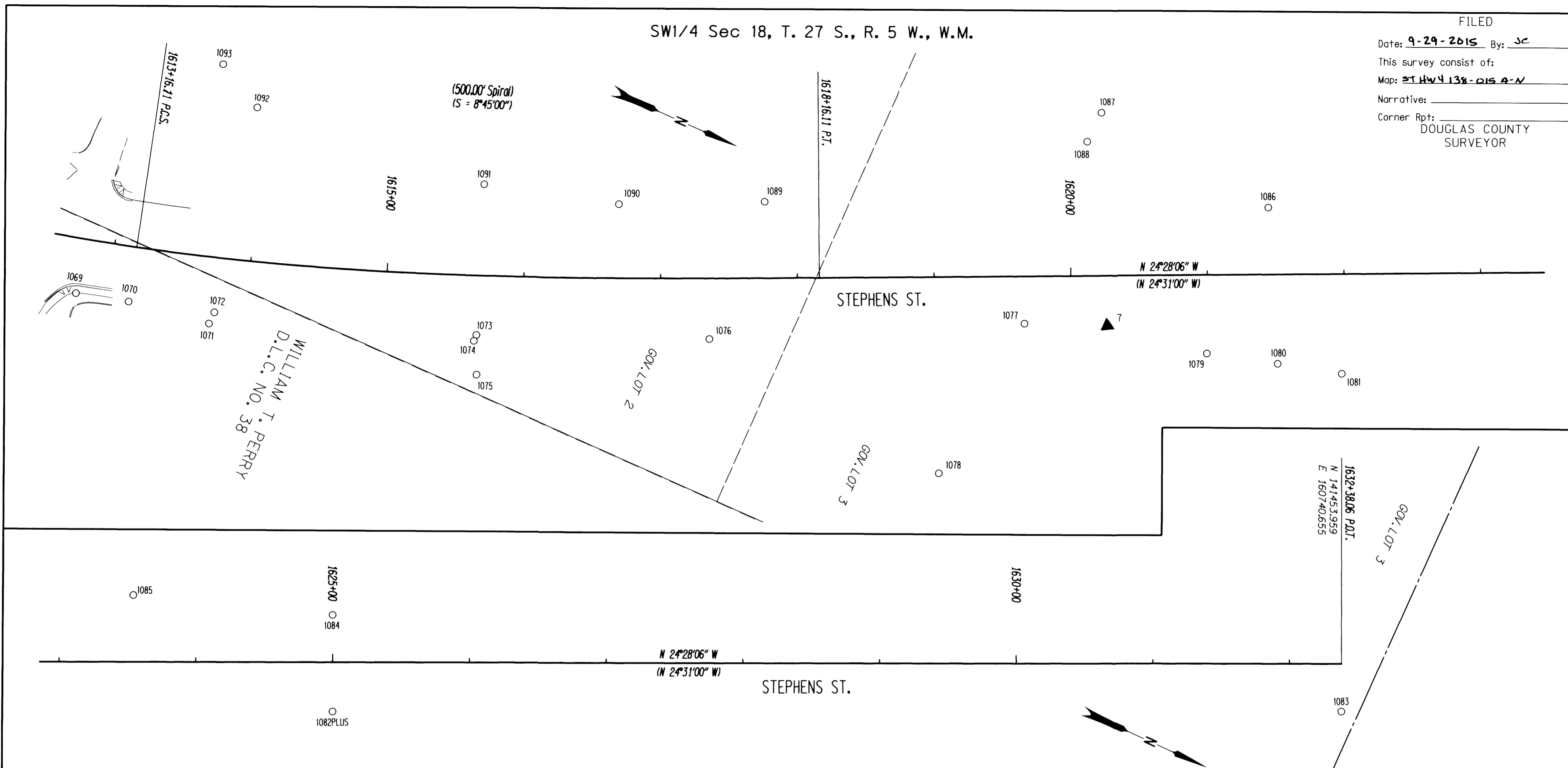
This survey consist of:

Map: ST HWY 138-OIS A-N

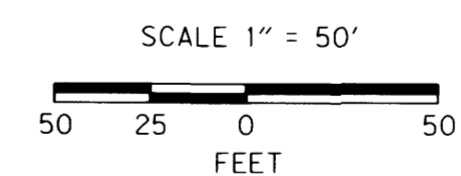
Narrative:

Corner Rpt:

DOUGLAS COUNTY SURVEYOR



RECOVERED MONUMENTS								REFERENCE
PT. NO.	OCRS NORTHING	OCRS EASTING	ELEVATION	STATION	OFFSET (- IS LEFT)	DATE	DESCRIPTION	
1071	139765.927	161542.523	-	1613+74.64	48.53	4/2/2012	FD. 5/8" IRON REBAR 0.2 FT BELOW SURFACE GOOD CONDITION	M6-70
1072	139766.219	161533.444	-	1613+77.61	39.97	4/2/2012	FD. 1 1/4" YELLOW PLASTIC CAP STAMPED "I.E. ENG." FLUSH WITH SURFACE GOOD CONDITION	M131-33
1073	139947.850	161470.191	-	1615+66.66	43.39	4/2/2012	FD. 5/8" IRON REBAR 0.4 FT BELOW SURFACE GOOD CONDITION	CS 55/126
1074	139947.914	161474.923	-	1615+64.95	47.80	4/2/2012	FD. 5/8" IRON REBAR 0.3 FT BELOW SURFACE FAIR CONDITION	CS 55/126
1075	139959.685	161496.677	-	1615+67.55	72.39	4/2/2012	FD. 5/8" IRON REBAR BENT SOUTHERLY TIED WHERE ENTERS GROUND POOR CONDITION	CS 55/126
1076	140104.568	161403.228	-	1617+35.60	44.27	4/25/2012	FD. 1 1/2" OD. IRON PIPE 0.2 FT ABOVE SURFACE GOOD CONDITION OLD LOOKING	M143-1
1077	140310.346	161298.956	-	1619+65.91	34.49	4/2/2012	FD. 2" BRASS DISK FLUSH IN CONCRETE STAMPED "49-3" GOOD CONDITION	CS 66/57
1078	140297.724	161424.127	-	1619+02.58	143.19	4/25/2012	FD. 1/2" IRON REBAR 0.4 FT BELOW SURFACE GOOD CONDITION AT BACK OF CONCRETE SIDEWALK	M59-5
1079	140441.276	161264.597	-	1620+99.32	57.45	4/2/2012	FD. 5/8" IRON ROD WITH 1 1/2" ALUM. CAP STAMPED "OREG. STATE HWY. DEPT." 0.4 FT BELOW SURFACE TIED WHERE ENTERS GROUND POOR CONDITION	DRG 58-5-21A
1080	140491.512	161250.204	-	1621+51.00	65.15	4/2/2012	FD. 5/8" IRON ROD WITH 1 1/2" ALUM. CAP STAMPED "1621+51.05" FLUSH WITH SURFACE TIED WHERE ENTERS GROUND POOR CONDITION	DRG 58-5-21A
1081	140537.377	161237.685	-	1621+97.93	72.75	4/25/2012	FD. 5/8" IRON REBAR BENT NE. 0.3 FT BELOW SURFACE TIED WHERE ROD ENTERS GROUND POOR CONDITION	M89-14
1082PLUS	140797.141	161079.082	-	1625+00.06	35.99	4/2/2012	FD. 2 3/4" BRASS DISK STAMPED "STATE HIGHWAY DEPARTMENT REFERENCE RP POT STA. 1625+00 35.9 RT." FLUSH WITH CONCRETE SIDEWALK GOOD CONDITION (TIED ON THE PLUS MARK)	DRG 58-5-21A
1083	141468.373	160772.330	-	1632+38.06	34.80	4/2/2012	FD. 2 3/4" BRASS DISK STAMPED "STATE HIGHWAY DEPARTMENT REFERENCE RP EQ. 34.80 RT." FLUSH WITH CONCRETE SIDEWALK GOOD CONDITION	DRG 58-5-21A
1084	140767.783	161014.849	-	1624+99.94	-34.64	4/2/2012	FD. 2 3/4" BRASS DISK STAMPED "STATE HIGHWAY DEPARTMENT REFERENCE RP POT STA. 1625+00 34.70 LT." FLUSH WITH CONCRETE SIDEWALK GOOD CONDITION	DRG 58-5-21A
1085	140629.335	161062.180	-	1623+54.32	-48.90	4/25/2012	FD. 1 1/4" YELLOW PLASTIC CAP STAMPED "AND MAR PLS 2287" CAP DAMAGED FULL STAMPING NOT READABLE FLUSH SURFACE FAIR CONDITION	M151-36
1086	140438.725	161148.996	-	1621+44.87	-48.83	4/25/2012	FD. 1 1/4" YELLOW PLASTIC CAP STAMPED "LAND MARK PLS 2287" 0.2 FT ABOVE SURFACE GOOD CONDITION	M151-36
1087	140298.954	161135.351	-	-	-	4/25/2012	FD. 1 1/4" YELLOW PLASTIC CAP STAMPED "LAND MARK PLS 2287" 0.1 FT ABOVE SURFACE GOOD CONDITION	M151-36
1088	140298.138	161159.014	-	1620+12.76	-97.94	4/25/2012	FD. 5/8" IRON ROD 0.2 FT. BELOW SURFACE GOOD CONDITION	M151-36
1089	140100.559	161295.310	-	1617+76.42	-55.71	4/2/2012	FD. 1" SMOOTH IRON ROD 0.5 FT. BELOW SURFACE GOOD CONDITION	M24-50
1090	140003.924	161340.392	-	1616+69.13	-54.07	4/2/2012	FD. 3/4" IRON ROD LEANS SOUTHERLY 0.3 FT ABOVE SURFACE FAIR CONDITION	M24-61
1091	139908.275	161367.544	-	1615+69.03	-66.59	4/2/2012	FD. 5/8" SMOOTH IRON ROD 0.4 FT BELOW SURFACE TIED WHERE ENTERS GROUND POOR CONDITION	M24-61
1092	139733.843	161383.943	-	-	-	4/2/2012	FD. 5/8" IRON ROD WITH 1 1/2" YELLOW PLASTIC CAP STAMPED "STRATTON LS 1111" 0.1 FT ABOVE SURFACE GOOD CONDITION	M127-57
1093	139698.350	161365.590	-	-	-	4/2/2012	FD. 5/8" IRON ROD BENT NORTHERLY TIED WHERE ENTERS GROUND 0.2 FT BELOW SURFACE POOR CONDITION	M127-57
CONTROL MONUMENT								REFERENCE
PT. NO.	OCRS NORTHING	OCRS EASTING	ELEVATION	STATION	OFFSET (- IS LEFT)	DATE	DESCRIPTION	
7	140366.339	161275.639	535.09	1620+26.54	36.46	4/18/2012	SET 1" COPPER DISK STAMPED "ODOT CONTROL 7" FLUSH WITH CONCRETE SIDEWALK	-



RECORD DATA	
( )	ODOT R/W DRG. 58-5-21A
NO	MEASURED/RESOLVED
BRACKET	SUPERCEDES RECORD

REGISTERED PROFESSIONAL LAND SURVEYOR  
*Marshall R. Wagstaff*  
 OREGON  
 JANUARY 9, 2001  
 MARSHALL R. WAGSTAFF  
 49476  
 EXPIRES: 6/30/2016

**POINT LEGEND**  
 ○ FOUND MONUMENT  
 ▲ SET NETWORK POINT  
 FOR MONUMENTS NOT SHOWN ON INDIVIDUAL SHEETS SEE SHEETS 1 AND 2  
 FOR LINE LEGEND SEE SHEET 1

**SI FEET** OREGON DEPARTMENT OF TRANSPORTATION  
 HORIZONTAL CONTROL, RECOVERY AND RETRACEMENT MAP  
 FFO - OR 138E: CORRIDOR SOLUTIONS (ROSEBURG) SECTION  
 NORTH UMPQUA HWY. NO. 138, OR138, M.P. -0.62 TO 0.57  
 DOUGLAS COUNTY  
 FILE: 13996RW.DGN :: CRR  
 FOR ODOT REGION 3  
 3500 NW. STEWART PKWY.  
 ROSEBURG, OR. 97470  
 SEPTEMBER 24, 2015  
 SCALE: 1" = 50'  
 SHEET 7 OF 14

ST. HWY. 138-015 G

SW1/4 Sec 18 & NW1/4 Sec 19, T. 27 S., R. 5 W., W.M.

FILED

Date: 9-29-2015 By: X

This survey consist of:

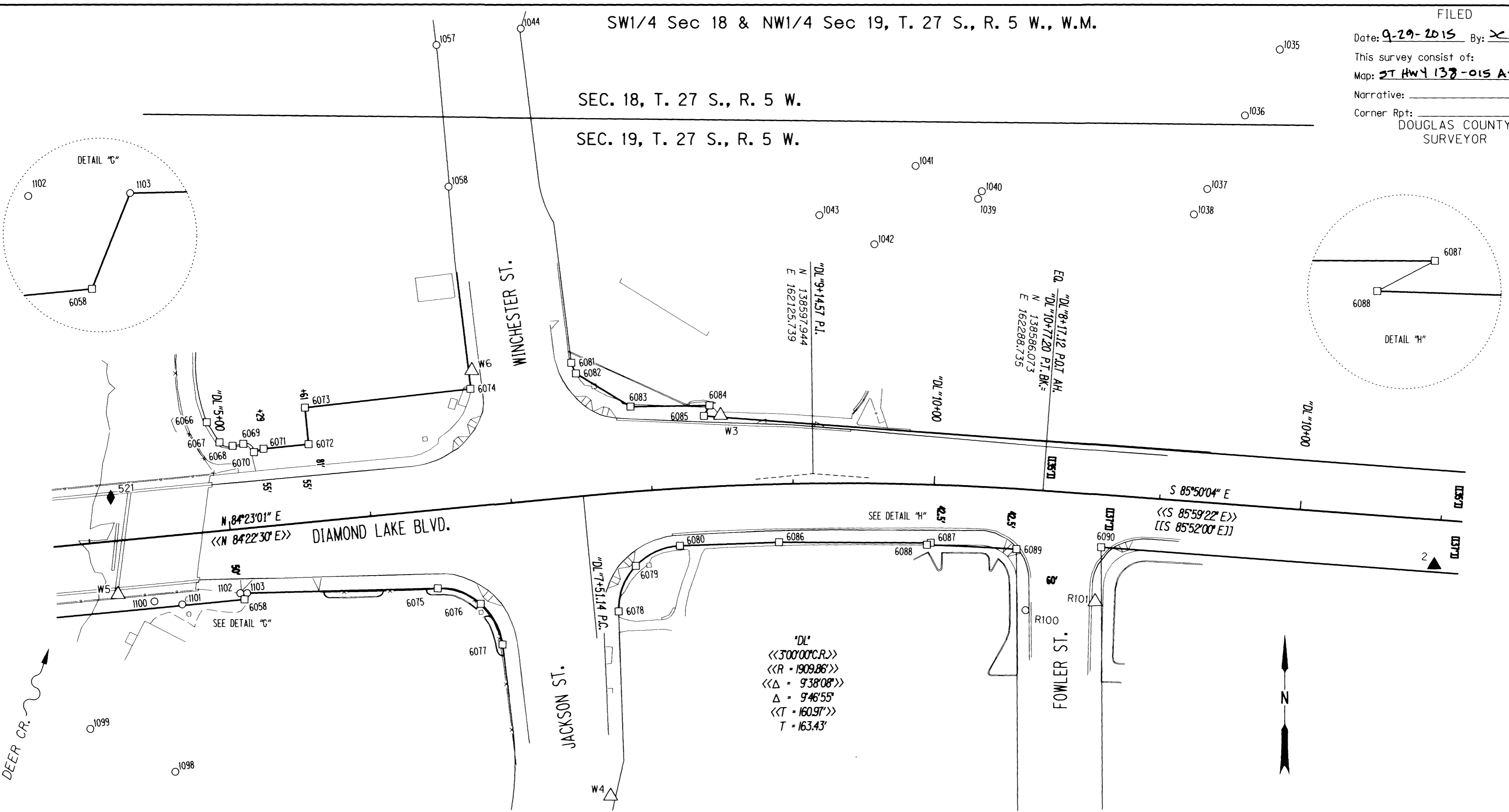
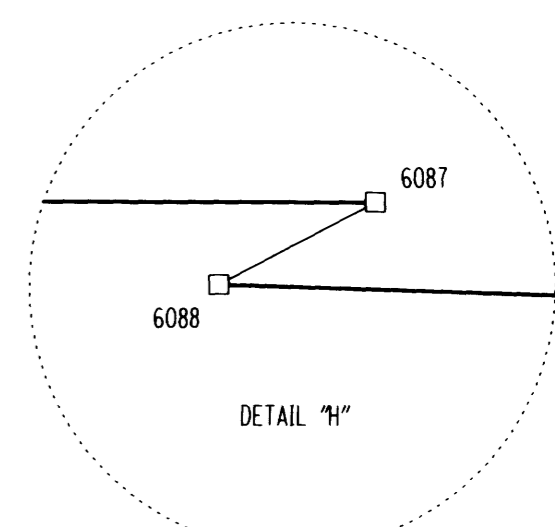
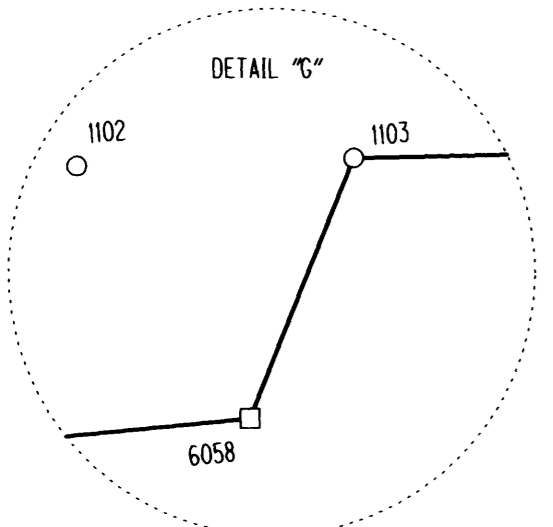
Map: 2T HWY 138-015 A-N

Narrative:

Corner Rpt: DOUGLAS COUNTY SURVEYOR

SEC. 18, T. 27 S., R. 5 W.

SEC. 19, T. 27 S., R. 5 W.



"DL"  
 <<300'00\"/>

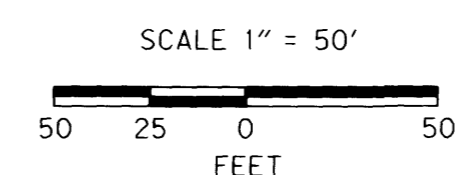
RECOVERED MONUMENTS

PT. NO.	OCRS NORTHING	OCRS EASTING	ELEVATION	STATION	OFFSET (- IS LEFT)	DATE	DESCRIPTION	REFERENCE
1035	138897.874	162456.359	-	-	-	3/30/2012	FD. 1 1/4" YELLOW PLASTIC CAP STAMPED "I.E. ENG" 0.4 FT BELOW SURFACE GOOD CONDITION	W131-48
1036	138851.437	162431.615	-	-	-	3/30/2012	FD. 5/8" IRON REBAR 0.3 FT BELOW SURFACE GOOD CONDITION	M58-53
1037	138799.322	162404.910	-	-	-	3/30/2012	FD. 1 1/4" YELLOW PLASTIC CAP STAMPED "I.E. ENG" FLUSH WITH SURFACE GOOD CONDITION	W131-48
1038	138781.309	162395.462	-	-	-	3/30/2012	FD. 1 1/4" YELLOW PLASTIC CAP STAMPED "I.E. ENG" 0.05 FT ABOVE SURFACE GOOD CONDITION	W131-48
1039	138792.357	162242.493	-	-	-	3/30/2012	FD. 1 1/4" YELLOW PLASTIC CAP STAMPED "I.E. ENG" 0.4 FT BELOW SURFACE GOOD CONDITION	W131-48
1040	138797.783	162245.134	-	-	-	3/30/2012	FD. 5/8" IRON REBAR 0.8 FT BELOW SURFACE GOOD CONDITION	M58-53
1041	138815.673	162198.229	-	-	-	4/24/2012	FD. 1 1/4" YELLOW PLASTIC CAP STAMPED "I.E. ENG" FLUSH WITH SURFACE GOOD CONDITION	W131-48
1042	138760.235	162168.992	-	-	-	3/30/2012	FD. 1 1/4" YELLOW PLASTIC CAP STAMPING UNREADABLE FLUSH WITH A.C GOOD CONDITION	W131-48
1043	138780.801	162130.074	-	-	-	4/24/2012	FD. 1 1/4" YELLOW PLASTIC CAP STAMPED "I.E. ENG" FLUSH WITH SURFACE GOOD CONDITION	W131-48
1044	138912.058	161918.625	-	-	-	4/24/2012	FD. MAG NAIL IN CONC. SIDEWALK FLUSH AT NW CORNER NEWS REVIEW BLDG GOOD CONDITION	W131-48
1057	138900.215	161859.028	-	-	-	4/24/2012	FD. 1 1/4" YELLOW PLASTIC CAP STAMPED "I.E. ENGINEERING" FLUSH WITH SURFACE GOOD CONDITION	W142-49
1058	138800.501	161867.539	-	-	-	4/2/2012	FD. 1 1/4" YELLOW PLASTIC CAP STAMPED "I.E. ENGINEERING" FLUSH WITH SURFACE GOOD CONDITION	W142-49
1098	138386.074	161674.583	-	-	-	4/26/2012	FD. 5/8" IRON REBAR 0.4 FT. BELOW SURFACE GOOD CONDITION	M52-33
1100	138506.624	161659.628	-	"DL"4+41.76	45.26	4/25/2012	FD. 3/4" IRON ROD BENT BADLY WEST TIED WHERE ROD ENTERS GROUND 1.0 FT BELOW SURFACE POOR CONDITION	M23-21
1101	138504.574	161679.343	-	"DL"4+61.18	49.23	4/25/2012	FD. 3/4" IRON ROD BENT BADLY NORTH TIED WHERE ROD ENTERS GROUND 0.5 FT BELOW SURFACE POOR CONDITION	M52-33
1102	138512.510	161720.421	-	"DL"5+02.83	45.36	4/25/2012	FD. 1" COPPER DISK STAMPED "ODOT CONTROL 3" FLUSH WITH CONC. SURFACE GOOD CONDITION	M52-33
1103	138512.654	161725.232	-	"DL"5+07.64	45.68	4/25/2012	FD. 5/8" IRON REBAR FLUSH WITH SURFACE GOOD CONDITION AT BACK OF CONCRETE WALK	M52-33
R100	138501.533	162276.423	-	"DL"10+70.78	85.20	4/26/2012	FD. 1" COPPER DISK STAMPED "ODOT CONTROL 100" FLUSH IN CONCRETE SIDEWALK GOOD CONDITION	ST. HWY. 138-008

CONTROL MONUMENTS

PT. NO.	OCRS NORTHING	OCRS EASTING	ELEVATION	STATION	OFFSET (- IS LEFT)	DATE	DESCRIPTION	REFERENCE
2	138533.725	162566.025	450.05	"DL"10+97.48	32.07	4/18/2012	SET 1" COPPER DISK STAMPED "ODOT CONTROL 2" FLUSH WITH CONCRETE SIDEWALK	-
521	138580.062	161628.617	-	"DL"4+18.08	-30.86	6/11/2012	SET 1" COPPER DISK STAMPED "ODOT CONTROL 521" IN CONC. SLAB	-
R101	138507.534	162325.737	448.61	"DL"8+59.73	75.64	4/18/2012	FD. 1" COPPER DISK STAMPED "ODOT CONTROL 101" FLUSH WITH CONCRETE SIDEWALK GOOD CONDITION	ST. HWY. 138-008
W3	138639.127	162060.224	449.08	"DL"8+50.83	-50.07	3/30/2012	FD. 1" COPPER DISK STAMPED "ODOT CONTROL 3" FLUSH WITH CONC. SURFACE GOOD CONDITION	ST. HWY. 138-006
W4	138369.678	161982.898	449.04	-	-	4/18/2012	FD. 1" COPPER DISK STAMPED "ODOT CONTROL 4" FLUSH WITH CONCRETE SIDEWALK GOOD CONDITION	ST. HWY. 138-006
W6	138670.390	161884.076	448.86	"DL"6+81.15	-95.75	4/2/2012	FD. 1" COPPER DISK STAMPED "ODOT CONTROL 6" FLUSH WITH CONCRETE SIDEWALK GOOD CONDITION	ST. HWY. 138-006

FOR CALCULATED POINTS SEE SHEET 9



- POINT LEGEND**
- FOUND MONUMENT
  - CALCULATED POINT
  - △ FOUND NETWORK POINT
  - ▲ SET NETWORK POINT
  - ◆ SET STRATEGIC POINT

FOR MONUMENTS NOT SHOWN ON INDIVIDUAL SHEETS SEE SHEETS 1 AND 2  
 FOR LINE LEGEND SEE SHEET 1

**RECORD DATA**

[[ ]]	ODOT R/W DRG. 6B-21-13
<< >>	COUNTY ROAD PLAN: SC09 1969-008
NO	MEASURED/RESOLVED
BRACKET	SUPERCEDES RECORD

REGISTERED PROFESSIONAL LAND SURVEYOR  
 Marshall R. Wagstaff  
 OREGON JANUARY 9, 2001  
 MARSHALL R. WAGSTAFF 49476  
 EXPIRES: 6/30/2016

**OREGON DEPARTMENT OF TRANSPORTATION**  
 HORIZONTAL CONTROL, RECOVERY AND RETRACEMENT MAP  
 FFO - OR 138E: CORRIDOR SOLUTIONS (ROSEBURG) SECTION  
 NORTH UMPQUA HWY. NO. 138, OR138, M.P. -0.62 TO 0.57  
 DOUGLAS COUNTY  
 FILE: 13996RW.DGN :: CRR

FOR ODOT REGION 3 SEPTEMBER 24, 2015  
 3500 NW STEWART PKWY. SCALE: 1" = 50'  
 ROSEBURG, OR. 97470 SHEET 8 OF 14

ST. HWY. 138-015 H

Date: 9-19-2015 By: JC

This survey consist of:

Map: ST HWY 138-015 A-N

Narrative: \_\_\_\_\_

Corner Rpt: \_\_\_\_\_  
DOUGLAS COUNTY  
SURVEYOR

CALCULATED POINTS FROM SHEETS 8 & 10

PT. NO.	OCRS NORTHING	OCRS EASTING	STATION	OFFSET (- IS LEFT)	DESCRIPTION	REFERENCE
6058	138508.140	161723.433	"DL"5+05.40	50.00	RIGHT OF WAY ANGLE POINT SEE DRG. 5B-5-21A AND DEED 383-504 ACQUIRED BY CITY	-
6066	138633.552	161696.555	"DL"4+90.93	-77.44	RIGHT OF WAY SEE DEED INSTR. NO. 2008-017131	-
6067	138619.311	161705.506	"DL"4+98.44	-62.39	RIGHT OF WAY SEE DEED INSTR. NO. 2008-017131	-
6068	138616.851	161714.765	"DL"5+07.42	-59.04	RIGHT OF WAY SEE DEED INSTR. NO. 2008-017131	-
6069	138618.333	161722.352	"DL"5+15.11	-59.77	RIGHT OF WAY SEE DEED INSTR. NO. 2008-017131	-
6070	138612.463	161729.906	"DL"5+22.06	-53.19	RIGHT OF WAY SEE DRG. 5B-5-21A AND INTERSECTION OF DEEDS 390-198 AND INSTR. NO. 2008-017131	-
6071	138614.945	161736.640	"DL"5+29.00	-55.00	RIGHT OF WAY ANGLE POINT SEE DRG. 5B-5-21A AND DEEDS 390-198 ACQUIRED BY CITY, 1502-689, INSTR. NO. 2008-017131	-
6072	138618.077	161768.486	"DL"5+61.00	-55.00	RIGHT OF WAY ANGLE POINT SEE DRG. 5B-5-21A AND DEEDS 390-198 ACQUIRED BY CITY, 1502-689, INSTR. NO. 2008-017131	-
6073	138643.952	161765.942	"DL"5+61.00	-81.00	RIGHT OF WAY ANGLE POINT SEE DRG. 5B-5-21A AND DEEDS 390-198 ACQUIRED BY CITY, 1502-689, INSTR. NO. 2008-017131	-
6074	138657.342	161882.992	"DL"6+78.80	-82.87	RIGHT OF WAY SEE DRG. 5B-5-21A AND INTERSECTION OF DEEDS 390-198 AND INSTR. NO. 2008-017131	-
6075	138516.179	161860.134	"DL"6+42.24	55.38	RIGHT OF WAY BEGINNING OF 45' RADIUS SEE DRG. 6B-12-3 AND DEEDS 418-16, 418-18, AND 418-22	-
6076	138505.325	161890.634	"DL"6+71.53	69.16	RIGHT OF WAY MIDPOINT OF 45' RADIUS SEE DRG. 6B-12-3 AND DEEDS 418-16, 418-18, AND 418-22	-
6077	138476.803	161905.955	"DL"6+83.98	99.05	RIGHT OF WAY END OF 45' RADIUS SEE DRG. 6B-12-3 AND DEEDS 418-16, 418-18, AND 418-22	-
6078	138500.257	161988.308	"DL"7+69.02	83.69	RIGHT OF WAY BEGINNING OF 45' RADIUS SEE DRG. 6B-12-3 AND DEED 1450-929	-
6079	138532.534	162000.324	"DL"7+84.27	52.54	RIGHT OF WAY MIDPOINT OF 45' RADIUS SEE DRG. 6B-12-3 AND DEED 1450-929	-
6080	138546.861	162031.644	"DL"8+17.34	40.51	RIGHT OF WAY END OF 45' RADIUS SEE DRG. 6B-12-3 AND DEED 1450-929	-
6081	138676.182	161954.485	"DL"7+51.76	-94.62	RIGHT OF WAY ANGLE POINT SEE DRG. 6B-12-3 AND DEEDS 375-717, 445-400, 445-402, AND 1555-558	-
6082	138668.656	161957.816	"DL"7+54.23	-86.81	RIGHT OF WAY ANGLE POINT SEE DRG. 6B-12-3 AND DEEDS 375-717, 445-400, 445-402, AND 1555-558	-
6083	138645.210	161996.367	"DL"7+89.25	-60.09	RIGHT OF WAY ANGLE POINT SEE DRG. 6B-12-3 AND DEEDS 375-717, 445-400, 445-402, AND 1555-558	-
6084	138646.189	162052.418	"DL"8+43.57	-57.49	RIGHT OF WAY ANGLE POINT SEE DRG. 6B-12-3 AND DEEDS 375-717, 445-400, 445-402, AND 1555-558	-
6085	138638.665	162048.451	"DL"8+39.35	-50.18	RIGHT OF WAY ANGLE POINT SEE DRG. 6B-12-3 AND DEEDS 375-717, 445-400, 445-402, AND 1555-558	-
6086	138549.406	162101.718	"DL"8+88.99	41.09	RIGHT OF WAY ANGLE POINT SEE DRG. 6B-12-3 AND DEED 1450-929	-
6087	138549.198	162209.220	"DL"9+98.87	40.98	RIGHT OF WAY ANGLE POINT SEE DRG. 6B-12-3 AND DEED 1450-929	-
6088	138547.763	162206.494	"DL"9+96.13	42.50	RIGHT OF WAY ANGLE POINT SEE DRG. 6B-12-3, COUNTY ROAD PLAN SC09 1969-008, AND DEEDS 392-974 AND 1450-929	-
6089	138544.761	162269.970	"DL"10+61.13	42.50	RIGHT OF WAY ANGLE POINT AT FOWLER ST. SEE DRG. 6B-12-3, COUNTY ROAD PLAN SC09 1969-008, AND DEEDS 392-974 AND 1450-929	-
6090	138545.972	162329.964	"DL"8+61.15	37.00	INTERSECTION OF RIGHT OF WAY OF FOWLER ST. AND DRG. 6B-21-13	-
6091	138599.080	162591.988	"DL"11+18.63	-35.00	INTERSECTION OF RIGHT OF WAY OF ATLANTA ST. AND DRG. 6B-21-13	-
6092	138594.722	162651.829	"DL"11+78.63	-35.00	INTERSECTION OF RIGHT OF WAY OF ATLANTA ST. AND DRG. 6B-21-13	-
6093	138572.931	162951.037	"DL"14+78.63	-35.00	INTERSECTION OF RIGHT OF WAY OF BOSTON ST. AND DRG. 6B-21-13	-
6094	138568.573	163010.878	"DL"15+38.63	-35.00	INTERSECTION OF RIGHT OF WAY OF BOSTON ST. AND DRG. 6B-21-13	-
6095	138546.831	163309.416	"DL"18+37.95	-35.00	INTERSECTION OF RIGHT OF WAY OF CASPER ST. AND DRG. 6B-21-13	-
6096	138571.574	163371.367	"DL"18+97.94	-64.18	INTERSECTION OF RIGHT OF WAY OF CASPER ST. AND DRG. 1R-3-1731	-
6097	138550.934	163390.768	"DL"19+18.81	-45.00	RIGHT OF WAY ANGLE POINT DRG. 1R-3-1731	-
6098	138461.361	163656.948	"DL"21+87.19	37.00	INTERSECTION OF RIGHT OF WAY OF OLD STREET AND DRG. 6B-21-13	-

REGISTERED  
PROFESSIONAL  
LAND SURVEYOR

*Marshall R. Wagstaff*

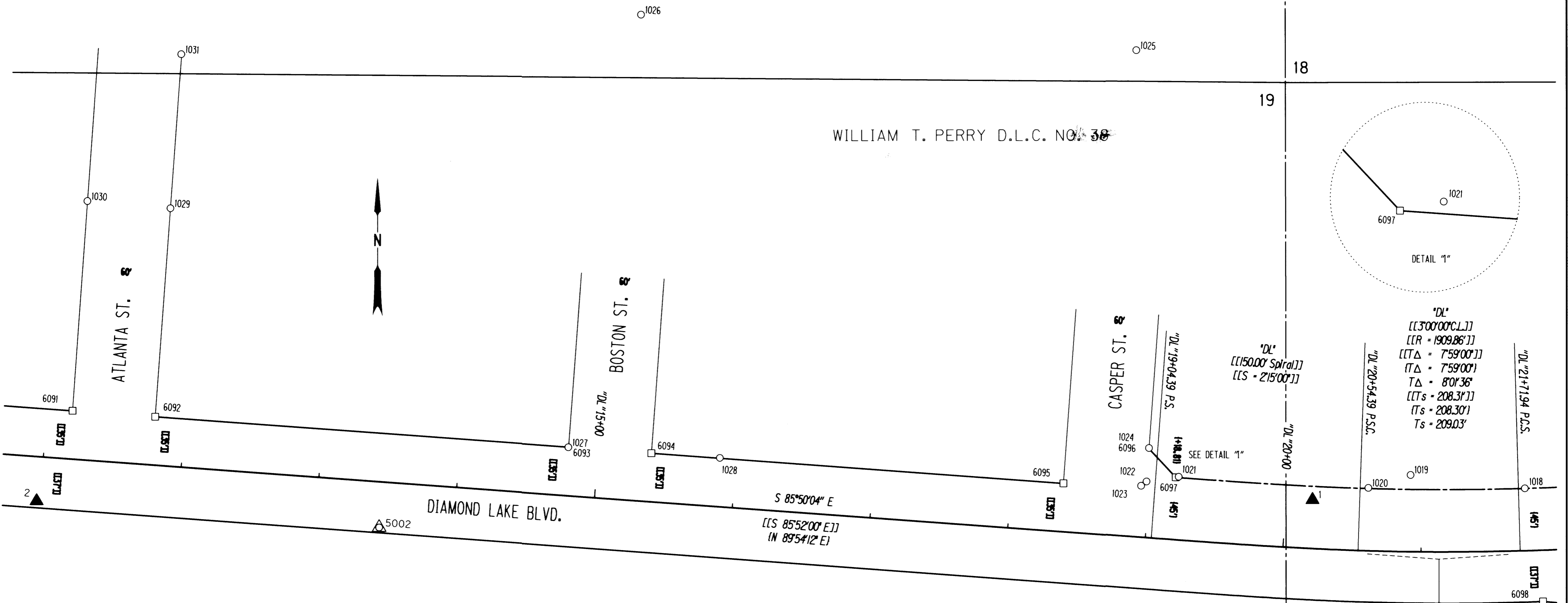
OREGON  
JANUARY 9, 2001  
MARSHALL R. WAGSTAFF  
49476

EXPIRES: 6/30/2016

**SI FEET** OREGON DEPARTMENT OF TRANSPORTATION  
HORIZONTAL CONTROL, RECOVERY AND RETRACEMENT MAP  
FFO - OR 138E: CORRIDOR SOLUTIONS (ROSEBURG) SECTION  
NORTH UMPQUA HWY. NO. 138, OR138, M.P. -0.62 TO 0.57  
DOUGLAS COUNTY  
FILE: 13996RW.DGN :: CRR

FOR ODOT REGION 3 SEPTEMBER 24, 2015  
3500 NW. STEWART PKWY. SCALE: 1" = 50'  
ROSEBURG, OR. 97470 SHEET 9 OF 14

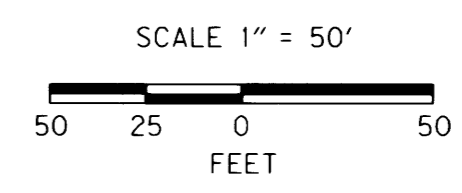
RECORD DATA	
[[ ]]	ODOT R/W DRG. 68-21-13
[ ]	ODOT R/W DRG. 1R-3-1731
NO BRACKET	MEASURED/RESOLVED SUPERCEDES RECORD



FOR CALCULATED POINTS SEE SHEET 9

RECOVERED MONUMENTS									
PT. NO.	OCRS	NORTHING	OCRS EASTING	ELEVATION	STATION	OFFSET (- IS LEFT)	DATE	DESCRIPTION	REFERENCE
1018	138543.064	163643.732	-	-	"DL"21+76.66	-45.10	3/29/2012	FD. 1 1/4" YELLOW PLASTIC CAP STAMPED "I.E. ENGINEERING" 0.2 FT BELOW SURFACE GOOD CONDITION	VOL. 21 PG. 16A
1019	138552.706	163560.923	-	-	"DL"20+91.70	-55.43	3/30/2012	FD. 1 1/4" YELLOW PLASTIC CAP STAMPED "LAND MARK 2287" 0.2 FT BELOW SURFACE GOOD CONDITION	2005-0065
1020	138543.415	163530.293	-	-	"DL"20+60.45	-45.47	3/30/2012	FD. 1 1/4" YELLOW PLASTIC CAP STAMPED "I.E. ENGINEERING" 0.1 FT BELOW SURFACE GOOD CONDITION	VOL. 21 PG. 16A
1021	138551.363	163392.879	-	-	"DL"19+20.89	-45.58	3/30/2012	FD. 5/8" IRON REBAR WITH A 1 1/4" YELLOW PLASTIC CAP STAMPED "I.E. ENGINEERING" 0.30 FT ABOVE SURFACE GOOD CONDITION	VOL. 21 PG. 16A
1022	138547.972	163369.656	-	-	"DL"18+97.95	-40.51	3/30/2012	FD. 1 1/4" YELLOW PLASTIC CAP STAMPED "LAND MARK PLS 2287" FLUSH WITH SURFACE GOOD CONDITION	M137-34
1023	138544.860	163365.724	-	-	"DL"18+94.26	-37.12	3/30/2012	FD. 1 3/8" BRASS DISK IN TOP OF CONCRETE CURB AT NE CORNER OF CASPER ST. AND DIAMOND LAKE BLVD. STAMPED "NECS 1998" FLUSH WITH CURB GOOD CONDITION	CS 66/57
1024	138572.056	163371.402	-	-	"DL"18+97.94	-64.66	3/30/2012	FD. 1 1/4" YELLOW PLASTIC CAP STAMPED "I.E. ENGINEERING" 0.4 FT BELOW SURFACE GOOD CONDITION	VOL. 21 PG. 16A
1025	138859.561	163362.302	-	-	-	-	4/2/2012	FD. 1 1/4" BRASS DISK SET ON 8"x8" CONCRETE PEDESTAL STAMPED WITH CHISELED X HAD THRU 8" DIAMETER MONUMENT BOX AT INTERSECTION OF CASPER ST. AND ODELL AVENUE.	M92-7
1026	138885.618	163003.594	-	-	-	-	4/1/2012	FD. 2" BRASS DISK STAMPED "X" IN AN 8" MONUMENT BOX DISK IS 1.0 FT BELOW AC. AT INTERSECTION OF BOSTON AND ODELL AVENUES	M92-7
1027	138572.886	162950.780	-	-	"DL"14+78.37	-34.94	4/24/2012	FD. 2" BRASS DISK STAMPED "LS 2287" FLUSH WITH SIDEWALK AT CORNER OF BUILDING AT CORNER OF BOSTON AND DIAMOND LAKE BLVD. GOOD CONDITION	M127-21
1028	138565.185	163060.523	-	-	"DL"15+88.39	-35.23	3/30/2012	FD. 1" X 1" SQUARE TOPPED ROD FLUSH WITH CONCRETE APPROACH GOOD CONDITION	M25-45
1029	138745.639	162662.905	-	-	-	-	4/24/2012	FD. 1 1/4" YELLOW PLASTIC CAP STAMPED "AA SURVEYING" 0.2' ABOVE SURFACE GOOD CONDITION	M127-21
1030	138750.828	162602.820	-	-	-	-	3/30/2012	FD. 5/8" IRON REBAR 0.2 FT. BELOW GRAVEL SURFACE GOOD CONDITION	M127-21
1031	138856.996	162670.802	-	-	-	-	3/30/2012	FD. 1 1/4" YELLOW PLASTIC CAP STAMPED "AA SURVEYING" FLUSH WITH SURFACE GOOD CONDITION	M127-21
CONTROL MONUMENTS									
PT. NO.	OCRS	NORTHING	OCRS EASTING	ELEVATION	STATION	OFFSET (- IS LEFT)	DATE	DESCRIPTION	REFERENCE
1	138534.804	163489.906	456.56	-	"DL"20+19.66	-35.23	4/18/2012	SET 1" COPPER DISK STAMPED "ODOT CONTROL 1" FLUSH WITH CONCRETE SIDEWALK	-
5002	138514.574	162813.936	451.59	-	"DL"13+46.13	33.16	3/30/2012	FD. 2 1/2" BRASS DISK STAMPING IS UNREADABLE FLUSH WITH CONCRETE WALK IN APPROACH TO MESSENGER'S AUTO BODY	CS 66/57

REGISTERED PROFESSIONAL LAND SURVEYOR  
 Marshall R. Wagoner  
 OREGON JANUARY 9, 2001  
 MARSHALL R. WAGSTAFF 49476  
 EXPIRES: 6/30/2016



POINT LEGEND

- FOUND MONUMENT
- CALCULATED POINT
- ▲ SET NETWORK POINT
- △ FOUND MONUMENT USED AS NETWORK POINT

FOR MONUMENTS NOT SHOWN ON INDIVIDUAL SHEETS SEE SHEETS 1 AND 2

FOR LINE LEGEND SEE SHEET 1

SCALE 1" = 50'

OREGON DEPARTMENT OF TRANSPORTATION

HORIZONTAL CONTROL, RECOVERY AND RETRACEMENT MAP FFO - OR 138E: CORRIDOR SOLUTIONS (ROSEBURG) SECTION NORTH UMPQUA HWY. NO. 138, OR138, M.P. -0.62 TO 0.57 DOUGLAS COUNTY FILE: 13996RW.DGN :: CRR

FOR ODOT REGION 3 3500 NW. STEWART PKWY. ROSEBURG, OR. 97470

SEPTEMBER 24, 2015 SCALE: 1" = 50' SHEET 10 OF 14

Date: 9-29-2015 By: JC

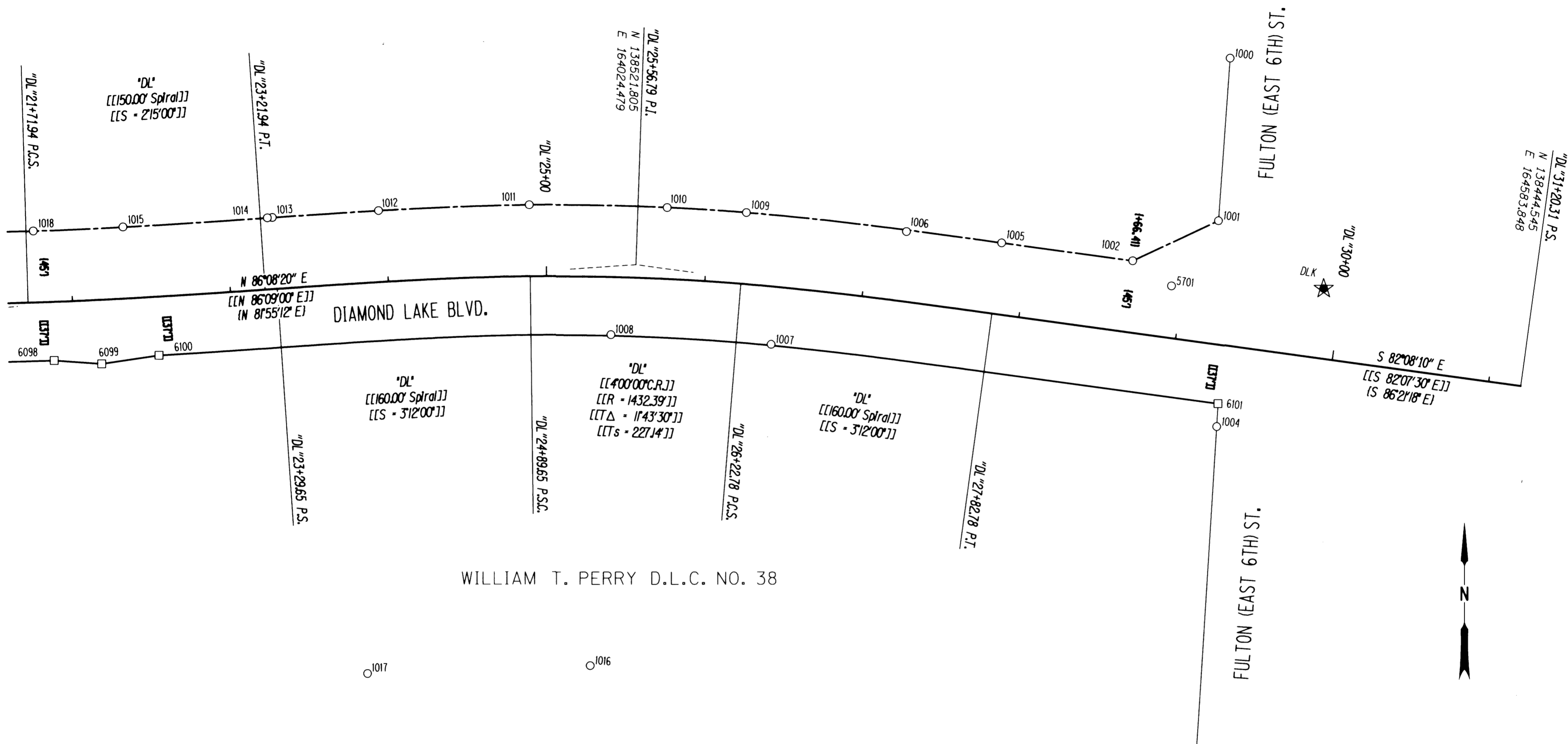
This survey consist of:

Map: . 51 HWY 138-015 A-N

Narrative: \_\_\_\_\_

Corner Rpt: \_\_\_\_\_  
DOUGLAS COUNTY SURVEYOR

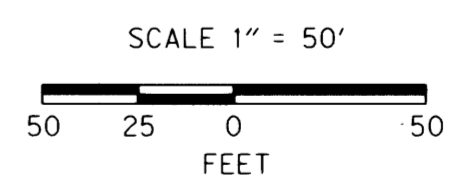
RECORD DATA	
[[ ]]	ODOT R/W DRG. 6B-21-13
( )	ODOT R/W DRG. 1R-3-1731
NO	MEASURED/RESOLVED
BRACKET	SUPERCEDES RECORD



WILLIAM T. PERRY D.L.C. NO. 38

RECOVERED MONUMENTS									
PT. NO.	OCCRS	NORTHING	OCCRS EASTING	ELEVATION	STATION	OFFSET (- IS LEFT)	DATE	DESCRIPTION	REFERENCE
1000	138651.531	164400.201	-	-	-	-	3/29/2012	FD. 1 1/4" YELLOW PLASTIC CAP STAMPED "I.E. ENGINEERING" FLUSH WITH AC. GOOD CONDITION	2011-0006A
1001	138548.978	164392.736	-	-	"DL"29+16.71	-77.30	3/29/2012	FD. 1 3/8" BRASS DISK IN CONCRETE SIDEWALK STAMPED "LS 1654"	2011-0006A
1002	138523.877	164338.515	-	-	"DL"28+66.43	-45.02	3/29/2012	FD. 1 1/4" YELLOW PLASTIC CAP STAMPED "I.E. ENGINEERING" 0.1 FT BELOW LAWN SURFACE GOOD CONDITION	2011-0006A
1004	138419.086	164391.532	-	-	"DL"29+33.29	51.53	3/29/2012	FD. 1 3/8" BRASS DISK IN CONCRETE SIDEWALK AT SW CORNER OF FULTON ST. AND DIAMOND LAKE BLVD. GOOD CONDITION	M161-27
1005	138535.261	164255.649	-	-	"DL"27+82.79	-44.96	3/29/2012	FD. 1 1/4" YELLOW PLASTIC CAP STAMPED "I.E. ENGINEERING" FLUSH WITH SURFACE GOOD CONDITION	2011-0006A
1006	138542.418	164195.515	-	-	"DL"27+22.59	-43.98	3/29/2012	FD. 1 1/4" YELLOW PLASTIC CAP STAMPED "I.E. ENGINEERING" FLUSH WITH SURFACE GOOD CONDITION	2011-0006A
1007	138471.464	164109.868	-	-	"DL"26+45.59	36.34	3/29/2012	FD. 1 1/4" YELLOW PLASTIC CAP STAMPED "I.E. ENGINEERING" FLUSH WITH A.C. GOOD CONDITION	M161-27
1008	138477.596	164008.585	-	-	"DL"25+41.50	36.38	3/29/2012	FD. 2" X 2" RR STEEL I-BEAM BENT BADLY WEST TIED WHERE ENTERS GROUND 0.1 FT BELOW SURFACE POOR CONDITION	M38-55
1009	138554.503	164094.259	-	-	"DL"26+22.74	-44.99	3/29/2012	FD. 1 1/4" YELLOW PLASTIC CAP STAMPED "I.E. ENGINEERING" 0.3 FT BELOW SURFACE GOOD CONDITION	VOL. 21 PG. 16A
1010	138557.713	164044.216	-	-	"DL"25+74.12	-44.97	3/29/2012	FD. 1 1/4" YELLOW PLASTIC CAP STAMPED "I.E. ENGINEERING" 0.5 FT BELOW SURFACE GOOD CONDITION	VOL. 21 PG. 16A
1011	138559.339	163957.052	-	-	"DL"24+89.59	-45.03	3/29/2012	FD. 5/8" IRON REBAR THAT PROTRUDES THROUGH YELLOW PLASTIC CAP FLUSH WITH SURFACE GOOD CONDITION	VOL. 21 PG. 16A
1012	138555.770	163861.856	-	-	"DL"23+96.39	-45.06	3/29/2012	FD. 5/8" IRON REBAR WITH 1 1/4" YELLOW PLASTIC CAP STAMPED "LAND MARK PLS 2287" 0.6 FT ABOVE SURFACE GOOD CONDITION	2009-0044A
1013	138551.469	163794.743	-	-	"DL"23+29.58	-45.07	3/29/2012	FD. 1 1/4" YELLOW PLASTIC CAP STAMPED "I.E. ENGINEERING" 0.1 FT BELOW SURFACE GOOD CONDITION	VOL. 21 PG. 16A
1014	138551.242	163791.634	-	-	"DL"23+26.46	-45.05	3/29/2012	FD. 1 1/4" YELLOW PLASTIC CAP STAMPED "I.E. ENGINEERING" FLUSH WITH SURFACE GOOD CONDITION	VOL. 21 PG. 16A
1015	138545.513	163700.436	-	-	"DL"22+34.48	-45.09	3/29/2012	FD. 5/8" IRON REBAR WITH 1 1/4" YELLOW PLASTIC CAP STAMPED "PLS 2287 LAND MARK" 0.7 FT ABOVE SURFACE GOOD CONDITION	2009-0044A
1016	138268.599	163995.402	-	-	-	-	3/29/2012	FD. 1 1/4" YELLOW PLASTIC CAP STAMPED "I.E. ENGINEERING" 0.2 FT BELOW SURFACE GOOD CONDITION	M155-27
1017	138263.421	163854.724	-	-	-	-	3/29/2012	FD. 1 1/4" YELLOW PLASTIC CAP STAMPED "I.E. ENGINEERING" 0.1 FT BELOW SURFACE GOOD CONDITION	M155-27
5701	138507.972	164363.027	-	-	"DL"28+92.89	-32.62	3/29/2012	FD. 3" DIA. BRASS DISK IN TOP OF CONCRETE CURB STAMPED "CITY OF ROSEBURG 57-1" GOOD CONDITION	CS 66/57
CONTROL MONUMENTS									
PT. NO.	OCCRS	NORTHING	OCCRS EASTING	ELEVATION	STATION	OFFSET (- IS LEFT)	DATE	DESCRIPTION	REFERENCE
DLK	138506.017	164459.265	462.53	462.53	"DL"29+88.49	-43.85	4/18/2012	SET 1" COPPER DISK STAMPED "ODOT CONTROL DLK" IN NEW CONCRETE SIDEWALK	-
CALCULATED POINTS									
PT. NO.	OCCRS	NORTHING	OCCRS EASTING	ELEVATION	STATION	OFFSET (- IS LEFT)	DATE	DESCRIPTION	REFERENCE
6099	138459.178	163686.927	-	-	"DL"22+16.57	40.44	-	RIGHT OF WAY ANGLE POINT IN OLD STREET SEE DRG. 6B-21-13	-
6100	138464.582	163723.181	-	-	"DL"22+52.64	37.00	-	INTERSECTION OF RIGHT OF WAY OF OLD STREET AND DRG. 6B-21-13	-
6101	138433.630	164392.450	-	-	"DL"29+32.21	37.00	-	INTERSECTION OF RIGHT OF WAY OF FULTON ST. AND DRG. 6B-21-13	-

REGISTERED PROFESSIONAL LAND SURVEYOR  
*Marshall R. Wagstaff*  
OREGON JANUARY 9, 2001  
MARSHALL R. WAGSTAFF 49476  
EXPIRES: 6/30/2016



POINT LEGEND	
○	FOUND MONUMENT
□	CALCULATED POINT
★	SET GPS STATION
FOR MONUMENTS NOT SHOWN ON INDIVIDUAL SHEETS SEE SHEETS 1 AND 2	
FOR LINE LEGEND SEE SHEET 1	

SI FEET  
**T** OREGON DEPARTMENT OF TRANSPORTATION  
HORIZONTAL CONTROL, RECOVERY AND RETRACEMENT MAP  
FFO - OR 138E: CORRIDOR SOLUTIONS (ROSEBURG) SECTION  
NORTH UMPQUA HWY. NO. 138, OR138, M.P. -0.62 TO 0.57  
DOUGLAS COUNTY  
FILE: 13996RW.DGN :: CRR  
FOR ODOT REGION 3 SEPTEMBER 24, 2015  
3500 NW. STEWART PKWY. SCALE: 1" = 50'  
ROSEBURG, OR. 97470 SHEET 11 OF 14

NE1/4 Sec 24, T. 27 S., R. 6 W., W.M.

FILED

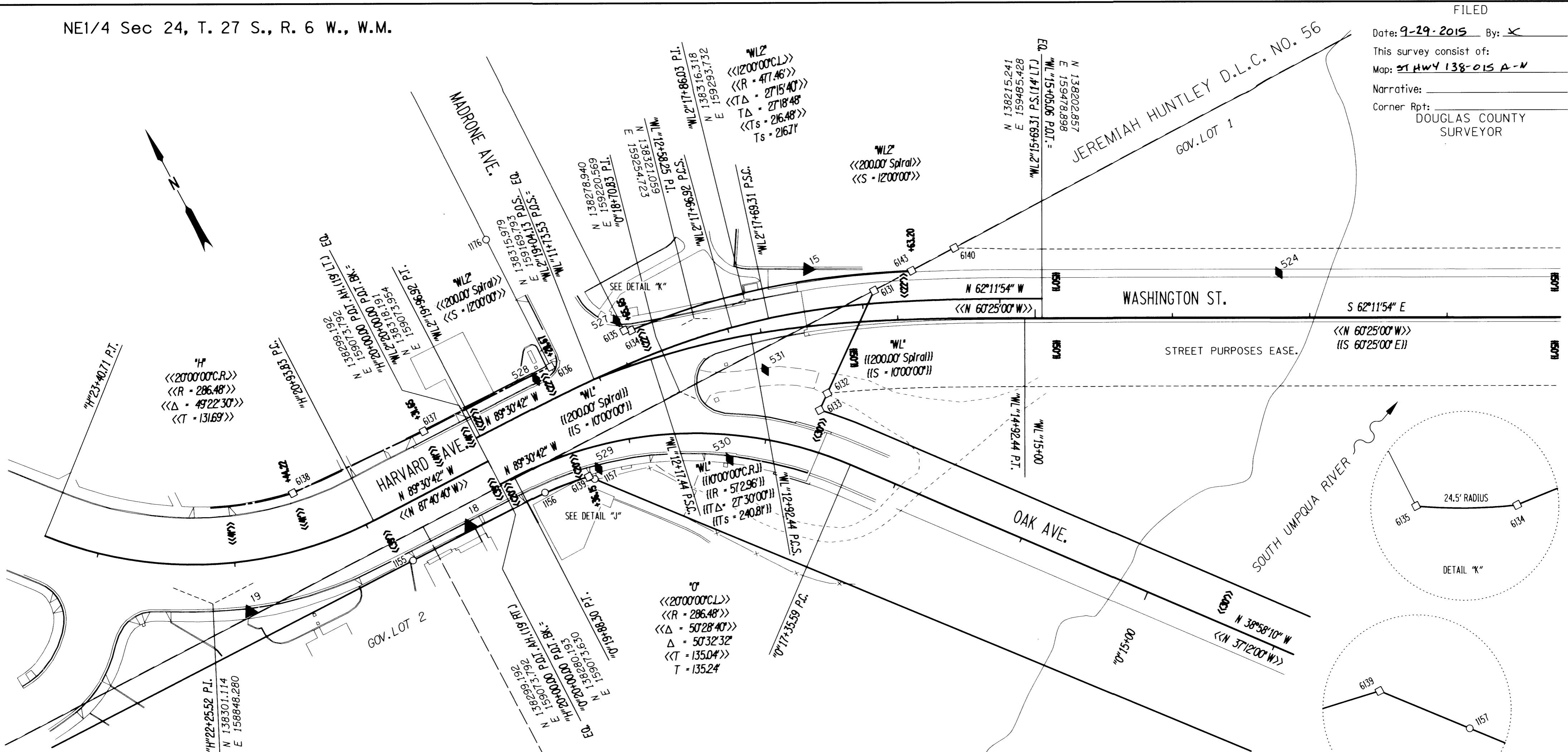
Date: 9-29-2015 By: *X*

This survey consist of:

Map: ST HWY 138-015 A-N

Narrative:

Corner Rpt: DOUGLAS COUNTY SURVEYOR



RECOVERED MONUMENTS

PT. NO.	OCRS	NORTHING	OCRS EASTING	ELEVATION	STATION	OFFSET (- IS LEFT)	DATE	DESCRIPTION	REFERENCE
1155	138260.890	158991.739	-	-	"H"20+81.72	-39.00	4/26/2012	FD. 5/8" IRON ROD FLUSH WITH SURFACE GOOD CONDITION	M68-14
1156	138259.970	159099.667	-	-	"0"19+72.72	-19.61	4/26/2012	FD. 1 1/4" YELLOW PLASTIC CAP STAMPED "AA SURVEYING" 0.2 FT ABOVE SURFACE GOOD CONDITION	M144-7
1157	138251.625	159136.389	-	-	"0"19+32.17	-22.99	4/26/2012	FD. 1 1/4" YELLOW PLASTIC CAP STAMPED "AA SURVEYING" 0.4 FT ABOVE SURFACE GOOD CONDITION	M144-7
1176	138442.288	159147.893	-	-	-	-	2/25/2014	FD. 3/4" IRON ROD AT BACK SIDEWALK 0.5' BELOW SURFACE GOOD CONDITION	M45-32

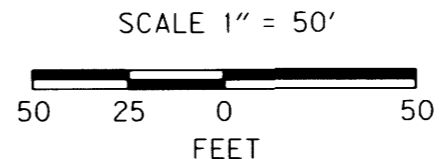
CONTROL MONUMENTS

PT. NO.	OCRS	NORTHING	OCRS EASTING	ELEVATION	STATION	OFFSET (- IS LEFT)	DATE	DESCRIPTION	REFERENCE
15	138313.963	159344.614	457.62	-	-	-	4/18/2012	SET 1" COPPER DISK STAMPED "ODOT CONTROL 15" FLUSH WITH CONCRETE CURB	-
18	138264.533	159039.672	465.28	"H"20+33.82	-34.95	-	2/11/2014	SET 1" COPPER DISK STAMPED "ODOT CONTROL 18" FLUSH WITH CONCRETE SIDEWALK	-
19	138283.653	158869.437	466.93	"H"21+93.68	-36.72	-	2/11/2014	SET 1" COPPER DISK STAMPED "ODOT CONTROL 19" FLUSH WITH CONCRETE SIDEWALK	-
524	138150.899	159646.609	-	-	"M"16+77.65	-32.26	10/3/2012	SET 1" COPPER DISK STAMPED "ODOT CONTROL 524" IN CONC. WALK	-
527	138345.997	159204.174	461.92	-	-	-	11/4/2013	SET 1" COPPER DISK STAMPED "ODOT CONTROL 527" IN CONC. WALK	-
528	138335.495	159132.435	463.53	-	-	-	11/4/2013	SET 1" COPPER DISK STAMPED "ODOT CONTROL 528" IN CONC. WALK	-
529	138257.045	159142.400	462.36	-	-	-	11/4/2013	SET 1" COPPER DISK STAMPED "ODOT CONTROL 529" IN CONC. WALK	-
530	138218.261	159229.825	459.47	-	-	-	11/4/2013	SET 1" COPPER DISK STAMPED "ODOT CONTROL 530" IN CONC. WALK	-
531	138263.789	159283.174	-	-	-	-	11/8/2013	SET MAG. NAIL AND WASHER STAMPED "ODOT 531"	-

CALCULATED POINTS

NOTE: BETWEEN CALCULATED POINTS 6137 & 6138 RIGHT OF WAY IS DEFINED BY DRG 88-22-1

PT. NO.	OCRS	NORTHING	OCRS EASTING	ELEVATION	STATION	OFFSET (- IS LEFT)	DATE	DESCRIPTION	REFERENCE
6131	138277.660	159380.132	-	-	"M"2"16+90.92	9.27	-	RIGHT OF WAY ANGLE POINT SEE DRG. 88-22-1 AND DEED 309-571	-
6132	138227.534	159315.149	-	-	"M"13+43.75	50.00	-	RIGHT OF WAY ANGLE POINT SEE DRG. 88-22-1 AND DEED 309-571	-
6133	138219.426	159304.639	-	-	"0"17+68.33	30.00	-	RIGHT OF WAY ANGLE POINT SEE DRG. 88-22-1 AND DEED 309-571 AND COUNTY ROAD PLAN 1974-027 AND DEED 450-164	-
6134	138334.992	159210.335	-	-	"M"2"18+65.64	22.00	-	RIGHT OF WAY ANGLE POINT INTERSECTION OF COUNTY ROAD PLAN SC09 1974-027 AND DEED 450-159 WITH DRG. 88-22-1 AND DEED 331-293	-
6135	138337.242	159205.972	-	-	"M"2"18+70.06	23.82	-	RIGHT OF WAY ANGLE POINT INTERSECTION OF MADRONE AVE. WITH DRG. 88-22-1 AND DEED 331-293	-
6136	138339.016	159145.995	-	-	"M"2"19+28.67	22.00	-	RIGHT OF WAY ANGLE POINT INTERSECTION OF MADRONE AVE. WITH COUNTY ROAD PLAN SC09 1974-027 AND DEED 460-606	-
6137	138340.460	159042.492	-	-	"H"20+31.65	41.00	-	RIGHT OF WAY ANGLE POINT INTERSECTION OF COUNTY ROAD PLAN SC09 1974-027 AND DEED 460-606 WITH DRG. 88-22-1 AND DEED 314-557	-
6138	138345.144	158937.392	-	-	"H"21+44.22	41.00	-	RIGHT OF WAY BEGINNING OF 245.48' RADIUS AT INTERSECTION OF COUNTY ROAD PLAN SC09 1974-027 AND DEED 452-506 WITH DRG. 88-22-1 AND DEED 314-562	-
6139	138255.280	159133.362	-	-	"0"19+36.15	-20.00	-	RIGHT OF WAY BEGINNING OF RADIUS INTERSECTION OF COUNTY ROAD PLAN SC09 1974-027 AND DEED 452-516 WITH OLD BRIDGE RIGHT OF WAY	-
6140	138277.704	159446.335	-	-	"M"14+41.92	-51.21	-	INTERSECTION OF EASEMENT FOR STREET PURPOSES DRG. 88-22-1 AND DEED 309-571 WITH D.L.C. NO. 56 / PROPERTY LINE	-
6143	138277.657	159411.075	-	-	"M"2"16+63.20	22.00	-	RIGHT OF WAY ANGLE POINT INTERSECTION OF COUNTY ROAD PLAN SC09 1974-027 AND DEED 450-159 WITH D.L.C. NO. 56 / PROPERTY LINE	-



RECORD DATA

	ODOT R/W DRG. 88-22-1
<< >>	COUNTY ROAD PLAN: SC09 1974-027
NO BRACKET	MEASURED/RESOLVED SUPERCEDES RECORD

REGISTERED PROFESSIONAL LAND SURVEYOR  
*Marshall R. Wagstaff*  
 OREGON  
 JANUARY 9, 2001  
 MARSHALL R. WAGSTAFF  
 49476  
 EXPIRES: 6/30/2016

- POINT LEGEND
- FOUND MONUMENT
  - CALCULATED POINT
  - ▲ SET NETWORK POINT
  - ◆ SET STRATEGIC POINT
- FOR MONUMENTS NOT SHOWN ON INDIVIDUAL SHEETS SEE SHEETS 1 AND 2
- FOR LINE LEGEND SEE SHEET 1

SI FEET  
**OREGON DEPARTMENT OF TRANSPORTATION**  
 HORIZONTAL CONTROL, RECOVERY AND RETRACEMENT MAP  
 FFO - OR 138E: CORRIDOR SOLUTIONS (ROSEBURG) SECTION  
 NORTH UMPQUA HWY. NO. 138, OR138, M.P. -.62 TO 0.57  
 DOUGLAS COUNTY  
 FILE: 13996RW.DGN :: CRR

FOR ODOT REGION 3  
 3500 NW. STEWART PKWY.  
 ROSEBURG, OR. 97470

SEPTEMBER 24, 2015  
 SCALE: 1" = 50'  
 SHEET 12 OF 14

ST. HWY. 138-015 L

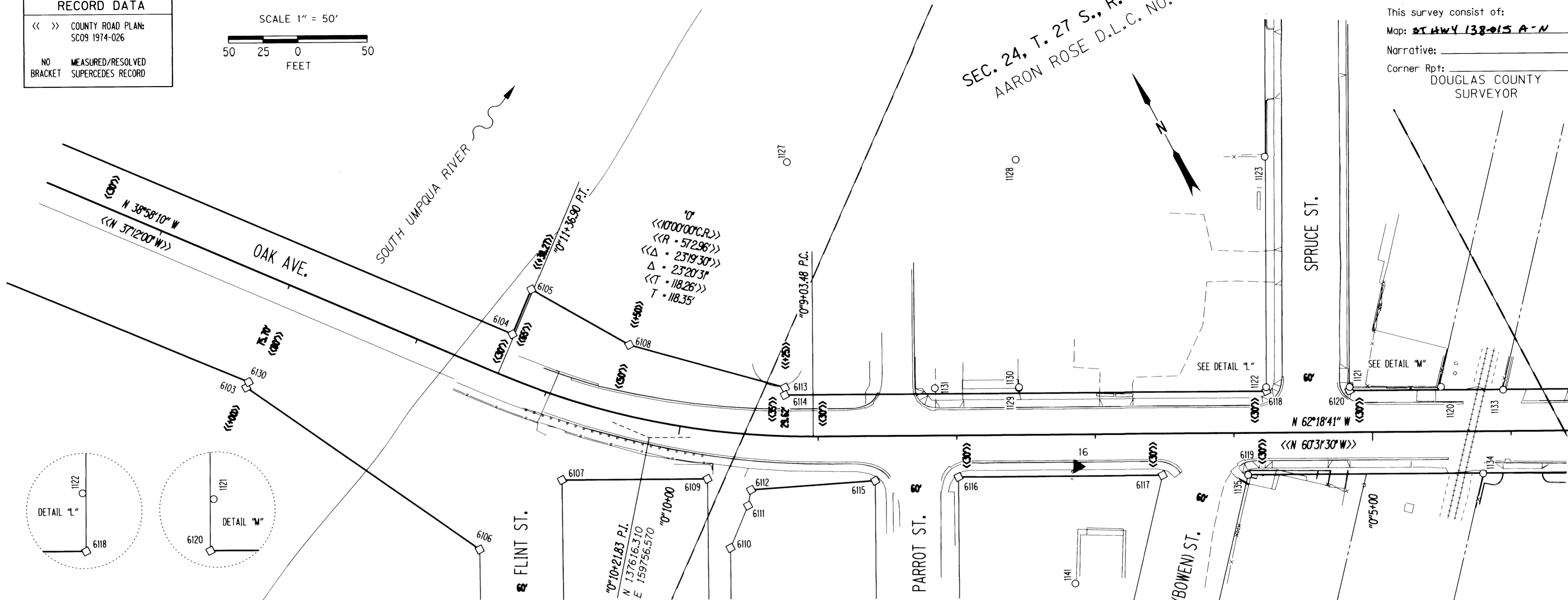
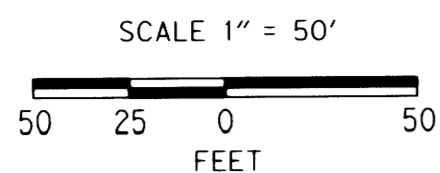
NE1/4 Sec 24, T. 27 S., R. 6 W., W.M.

SEC. 24, T. 27 S., R. 6 W.  
AARON ROSE D.L.C. NO. 60

FILED

Date: 9-29-2015 By: *XC*  
This survey consist of:  
Map: ST HWY 138-015 A-N  
Narrative:  
Corner Rpt: DOUGLAS COUNTY SURVEYOR

RECORD DATA	
<< >>	COUNTY ROAD PLAN: SC09 1974-026
NO BRACKET	MEASURED/RESOLVED SUPERCEDES RECORD



RECOVERED MONUMENTS									
PT. NO.	OCRS	NORTHING	OCRS EASTING	ELEVATION	STATION	OFFSET (- IS LEFT)	DATE	DESCRIPTION	REFERENCE
1120	137379.212	160277.518	-	-	"0"4+50.37	32.12	4/25/2012	FD. 1 1/4" YELLOW PLASTIC CAP STAMPED "R. BROWN PLS 2391" 0.2 FT BELOW SURFACE GOOD CONDITION	MI 46-14B
1121	137410.152	160219.307	-	-	"0"5+16.29	32.47	4/25/2012	FD. 1 1/4" YELLOW PLASTIC CAP STAMPED "R. BROWN PLS 2391" FLUSH WITH TOP OF CONCRETE BLOCK WALL GOOD CONDITION	MI 46-14B
1122	137438.461	160166.032	-	-	"0"5+76.62	32.78	4/3/2012	FD. 1 1/4" YELLOW PLASTIC CAP STAMPED "R. BROWN PLS 2391" 0.3 FT BELOW SURFACE GOOD CONDITION	MI 46-14B
1123	137585.097	160243.210	-	-	-	-	4/3/2012	FD. 5/8" IRON ROD 0.1 FT. BELOW SURFACE GOOD CONDITION	MI 46-14B
1127	137744.424	159937.577	-	-	-	-	4/26/2012	FD. 1 1/4" YELLOW PLASTIC CAP STAMPED "R. BROWN PLS 2391" FLUSH WITH SURFACE GOOD CONDITION	MI 46-14B
1128	137668.137	160083.918	-	-	-	-	4/25/2012	FD. 1 1/4" YELLOW PLASTIC CAP STAMPED "R. BROWN PLS 2391" 0.4 FT BELOW SURFACE GOOD CONDITION	MI 46-14B
1129	137522.177	160008.584	-	-	"0"7+54.94	33.75	4/25/2012	FD. 1 1/4" YELLOW PLASTIC CAP STAMPED "R. BROWN PLS 2391" BENT SLIGHTLY WEST TIED AT TOP 0.2 FT BELOW SURFACE FAIR CONDITION	MI 46-14B
1130	137522.622	160008.918	-	-	"0"7+54.85	34.30	4/25/2012	FD. 1" OD. IRON PIPE 0.1 FT. BELOW SURFACE GOOD CONDITION	UNKNOWN
1131	137550.630	159955.024	-	-	"0"8+15.59	34.06	4/25/2012	FD. 1" OD. IRON PIPE 0.3 FT. BELOW SURFACE GOOD CONDITION	MI 64
1133	137356.198	160316.058	-	-	"0"4+05.55	29.65	4/26/2012	FD. 1 1/4" YELLOW PLASTIC CAP STAMPED "I.E. ENG" 0.1 FT. BELOW SURFACE FAIR CONDITION	MI 31-20
1134	137309.920	160274.997	-	-	"0"4+20.40	-30.41	4/26/2012	FD. 1 1/4" YELLOW PLASTIC CAP STAMPED "I.E. ENG" FLUSH WITH SURFACE FAIR CONDITION	MI 31-20
1135	137388.841	160124.827	-	-	"0"5+90.05	-30.30	4/3/2012	FD. CHISELED "X" IN CONCRETE RETAINING WALL FADED OUT FAIR CONDITION	VOL. 2, PG. 10
1139	137133.601	160012.193	-	-	-	-	4/3/2012	FD. 5/8" IRON ROD WITH REMNANTS OF YELLOW PLASTIC CAP STAMPED "RAND PLS" SOME MARKS NOT READABLE 0.3 FT. BELOW SURFACE FAIR CONDITION	M98-17
1141	137378.874	159978.262	-	-	-	-	4/25/2012	FD. 1 1/2" SQUARE IRON ROD FLUSH WITH SURFACE GOOD CONDITION	MI 6-14

CONTROL MONUMENTS									
PT. NO.	OCRS	NORTHING	OCRS EASTING	ELEVATION	STATION	OFFSET (- IS LEFT)	DATE	DESCRIPTION	REFERENCE
16	137452.346	160019.483	456.36	-	"0"7+12.84	-23.02	4/19/2012	SET 1" COPPER DISK STAMPED "ODOT CONTROL 16" FLUSH WITH CONCRETE SIDEWALK	-

CALCULATED POINTS									
PT. NO.	OCRS	NORTHING	OCRS EASTING	ELEVATION	STATION	OFFSET (- IS LEFT)	DATE	DESCRIPTION	REFERENCE
6103	137784.820	159517.366	-	-	"0"13+00.00	-80.00	-	RIGHT OF WAY ANGLE POINT SEE COUNTY ROAD PLAN SC09 1974-026 AND DEED 458-547	-
6104	137728.257	159704.602	-	-	"0"11+38.27	30.00	-	RIGHT OF WAY ANGLE POINT SEE COUNTY ROAD PLAN SC09 1974-026	-
6105	137750.269	159731.814	-	-	"0"11+38.27	65.00	-	RIGHT OF WAY ANGLE POINT SEE COUNTY ROAD PLAN SC09 1974-026	-
6106	137602.678	159610.750	-	-	"0"11+06.22	-122.94	-	INTERSECTION OF RIGHT OF WAY OF FLINT ST. AND COUNTY ROAD PLAN SC09 1974-026	-
6107	137619.093	159686.704	-	-	"0"10+71.02	-56.73	-	INTERSECTION OF THE RIGHT OF WAY OF PLATTED OAK AVE. AND FLINT ST.	-
6108	137682.115	159775.372	-	-	"0"10+50.00	50.00	-	RIGHT OF WAY ANGLE POINT SEE COUNTY ROAD PLAN SC09 1974-026	-
6109	137570.303	159779.680	-	-	"0"9+75.80	-34.83	-	INTERSECTION OF THE RIGHT OF WAY OF PLATTED OAK AVE. AND THE ALLEY	-
6110	137518.719	159770.931	-	-	"0"9+56.25	-82.52	-	RIGHT OF WAY ANGLE POINT SEE COUNTY ROAD PLAN SC09 1974-026 AND DEED 450-857	-
6111	137539.491	159796.393	-	-	"0"9+47.02	-51.32	-	RIGHT OF WAY ANGLE POINT SEE COUNTY ROAD PLAN SC09 1974-026 AND DEED 450-857	-
6112	137548.567	159803.647	-	-	"0"9+45.77	-39.78	-	INTERSECTION OF RIGHT OF WAY FROM "0" & "A" LINES SEE COUNTY ROAD PLAN SC09 1974-026 AND DEED 450-857	-
6113	137602.030	159859.922	-	-	"0"9+25.00	35.00	-	RIGHT OF WAY ANGLE POINT SEE COUNTY ROAD PLAN SC09 1974-026	-
6114	137597.360	159857.243	-	-	"0"9+25.00	29.62	-	INTERSECTION OF RIGHT OF WAY OF PLATTED OAK AVE. AND COUNTY ROAD PLAN SC09 1974-026	-
6115	137512.103	159885.791	-	-	"0"8+58.99	-32.23	-	INTERSECTION OF THE RIGHT OF WAY OF PLATTED OAK AVE. AND PARROT ST.	-
6116	137486.198	159939.953	-	-	"0"7+98.99	-30.00	-	INTERSECTION OF THE RIGHT OF WAY OF PLATTED OAK AVE. AND PARROT ST.	-
6117	137417.739	160070.411	-	-	"0"6+51.66	-30.00	-	INTERSECTION OF THE RIGHT OF WAY OF PLATTED OAK AVE. AND SPRUCE ST.	-
6118	137435.926	160164.878	-	-	"0"5+76.46	30.00	-	INTERSECTION OF THE RIGHT OF WAY OF PLATTED OAK AVE. AND SPRUCE ST.	-
6119	137389.076	160125.032	-	-	"0"5+89.98	-30.00	-	INTERSECTION OF THE RIGHT OF WAY OF PLATTED OAK AVE. AND SPRUCE ST.	-
6120	137408.046	160218.007	-	-	"0"5+16.46	30.00	-	INTERSECTION OF THE RIGHT OF WAY OF PLATTED OAK AVE. AND SPRUCE ST.	-
6130	137787.526	159520.711	-	-	"0"13+00.00	-75.70	-	RIGHT OF WAY ANGLE POINT INTERSECTION OF COUNTY ROAD PLAN SC09 1974-026 AND DEED 458-547 WITH OLD BRIDGE RIGHT OF WAY	-

**POINT LEGEND**

- FOUND MONUMENT
- CALCULATED POINT
- ★ SET GPS STATION
- △ FOUND NETWORK POINT
- ▲ SET NETWORK POINT
- △ FOUND MONUMENT USED AS NETWORK POINT
- ◆ SET STRATEGIC POINT

FOR MONUMENTS NOT SHOWN ON INDIVIDUAL SHEETS SEE SHEETS 1 AND 2

FOR LINE LEGEND SEE SHEET 1

REGISTERED PROFESSIONAL LAND SURVEYOR

*Marshall R. Wagstaff*

OREGON  
JANUARY 9, 2001  
MARSHALL R. WAGSTAFF  
49476  
EXPIRES: 6/30/2016

SI FEET

**OREGON DEPARTMENT OF TRANSPORTATION**

HORIZONTAL CONTROL, RECOVERY AND RETRACEMENT MAP  
FFO - OR 138E: CORRIDOR SOLUTIONS (ROSEBURG) SECTION  
NORTH UMPQUA HWY. NO. 138, OR138, M.P. -0.62 TO 0.57  
DOUGLAS COUNTY  
FILE: 13996RW.DGN :: CRR

FOR ODOT REGION 3  
3500 NW. STEWART PKWY.  
ROSEBURG, OR. 97470

SEPTEMBER 24, 2015  
SCALE: 1" = 50'  
SHEET 13 OF 14

ST. HWY. 138-015 M

RECOVERED MONUMENTS									
PT. NO.	OCRS	NORTHING	OCRS EASTING	ELEVATION	STATION	OFFSET (- IS LEFT)	DATE	DESCRIPTION	REFERENCE
1112	138009.163	160726.546	-	-	-	-	4/25/2012	FD. 1 1/4" OD. IRON PIPE 0.2 FT. ABOVE SURFACE GOOD CONDITION	RM2-24
1113	137927.068	160754.008	-	-	-	-	4/3/2012	FD. 1 1/4" YELLOW PLASTIC CAP STAMPED "R. BROWN PLS 2391" SET FLUSH WITH SURFACE GOOD CONDITION	MI46-14B
1114	138043.722	160531.264	-	-	-	-	4/3/2012	FD. 1 1/4" YELLOW PLASTIC CAP STAMPED "R. BROWN PLS 2391" SET IN CONCRETE SIDEWALK GOOD CONDITION	MI46-14B
1115	137921.770	160466.870	-	-	-	-	4/3/2012	FD. 1 1/4" YELLOW PLASTIC CAP STAMPED "R. BROWN PLS 2391" SET FLUSH IN AC. SURFACE ALONG SPRUCE STREET GOOD CONDITION	MI46-14B
1116	137912.447	160484.527	-	-	-	-	4/2/2012	FD. 1 1/4" YELLOW PLASTIC CAP STAMPED "R. BROWN PLS 2391" SET IN AC. SURFACE GOOD CONDITION	MI46-14B
1117	137678.793	160537.471	-	-	"WL"26+85.87	-30.16	4/3/2012	FD. 1 1/4" YELLOW PLASTIC CAP STAMPED "R. BROWN PLS 2391" SET FLUSH IN AC. SURFACE GOOD CONDITION	MI46-14B
1118	137632.115	160496.772	-	-	"WL"26+71.64	30.11	4/3/2012	FD. 5/8" IRON ROD BENT SOUTHERLY TIED WHERE ROD ENTERS GROUND FLUSH WITH SURFACE POOR CONDITION	MI46-14B
1119	137698.088	160371.386	-	-	"WL"25+29.96	30.23	4/25/2012	FD. 1 1/4" YELLOW PLASTIC CAP STAMPED "R. BROWN PLS 2391" SET FLUSH IN TOP OF CONC. CURB AT SE CORNER OF INTERSECTION OF SPRUCE AND WASHINGTON	MI46-14B
1124	137704.746	160307.083	-	-	"WL"24+69.97	54.34	4/3/2012	FD. 1 1/4" YELLOW PLASTIC CAP STAMPED "R. BROWN PLS 2391" 0.1 FT BELOW SURFACE GOOD CONDITION	MI46-14B
1125	137815.730	160096.923	-	-	"WL"22+32.31	54.19	4/26/2012	FD. 1 1/4" YELLOW PLASTIC CAP STAMPED "R. BROWN PLS 2391" 0.2 FT BELOW SURFACE GOOD CONDITION	MI46-14B
1126	137845.118	160022.076	-	-	"WL"21+52.39	63.10	4/26/2012	FD. 5/8" IRON REBAR BENT SOUTH 0.2 FT ABOVE SURFACE TIED WHERE ROD ENTERS GROUND FAIR CONDITION	MI46-14B
1132	137608.790	160536.056	-	-	"WL"27+17.27	32.42	4/3/2012	FD. 1 1/4" YELLOW PLASTIC CAP STAMP NOT READABLE FLUSH WITH AC. GOOD CONDITION	MI31-20
1165	137738.823	160358.954	-	-	"WL"24+99.96	0.00	5/20/2012	FD. 1 1/4" SQUARE HEAD BOLT IN 9 1/2" DIAMETER MONUMENT BOX 1.2 FT BELOW SURFACE AT INTERSECTION OF SPRUCE AND WASHINGTON STREETS	CS 39/85

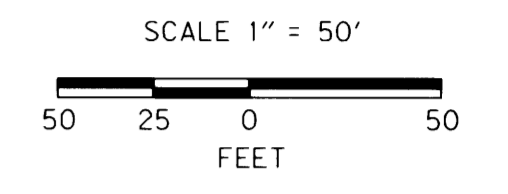
CONTROL MONUMENTS									
PT. NO.	OCRS	NORTHING	OCRS EASTING	ELEVATION	STATION	OFFSET (- IS LEFT)	DATE	DESCRIPTION	REFERENCE
9	138072.514	160510.512	449.27	-	-	-	4/19/2012	SET 5/8" X 30" IRON REBAR WITH A 1 1/2" BRASS CAP STAMPED "ODOT CONTROL 9"	-
13	137747.166	160392.978	456.07	-	"WL"25+26.17	-23.25	4/19/2012	DESTROYED 1" COPPER DISK STAMPED "ODOT CONTROL 13" FLUSH WITH CONCRETE SIDEWALK	-
13R	137746.214	160403.664	456.56	-	"WL"25+36.06	-27.39	7/13/2015	SET 1" COPPER DISK STAMPED "ODOT CONTROL 13R" FLUSH WITH CONCRETE SIDEWALK TIED USING 3 POINT RESECTION	-
14	137853.049	160133.802	461.45	-	"WL"22+47.52	3.97	4/19/2012	SET 5/8" X 30" IRON REBAR WITH A 1 1/2" BRASS CAP STAMPED "ODOT CONTROL 14"	-
525	137859.805	159990.544	449.30	-	"WL"21+17.65	64.81	11/12/2013	SET 1" COPPER DISK STAMPED "ODOT CONTROL 525" IN CONC. WALK	-
526	137950.028	160214.498	446.60	-	-	-	11/12/2013	SET 1" COPPER DISK STAMPED "ODOT CONTROL 526" IN CONC. WALK	-

CALCULATED POINTS									
PT. NO.	OCRS	NORTHING	OCRS EASTING	ELEVATION	STATION	OFFSET (- IS LEFT)	DATE	DESCRIPTION	REFERENCE
6121	137946.190	160160.083	-	-	"WL"22+27.33	-90.67	-	RIGHT OF WAY ANGLE POINT SEE DRG. 88-22-1 AND DEED 313-141	-
6122	137908.336	160225.685	-	-	"WL"23+03.01	-87.79	-	RIGHT OF WAY ANGLE POINT SEE DRG. 88-22-1 AND DEED 313-141	-
6123	137841.657	160300.210	-	-	"WL"24+00.03	-63.56	-	RIGHT OF WAY ANGLE POINT SEE DRG. 88-22-1 AND DEED 313-141	-
6124	137816.668	160343.517	-	-	"WL"24+50.00	-61.66	-	RIGHT OF WAY ANGLE POINT SEE DRG. 88-22-1 AND DEED 313-141	-
6125	137751.359	160399.499	-	-	"WL"25+29.98	-30.00	-	INTERSECTION OF THE RIGHT OF WAY OF PLATTED WASHINGTON ST. AND SPRUCE ST.	-
6126	137698.309	160371.469	-	-	"WL"25+29.93	30.00	-	INTERSECTION OF THE RIGHT OF WAY OF PLATTED WASHINGTON ST. AND SPRUCE ST.	-
6127	137839.605	160017.450	-	-	"WL"21+50.87	70.13	-	INTERSECTION OF RIGHT OF WAY OF DRG. 88-22-1 AND DEED 505-562	-
6128	137969.172	159772.100	-	-	"WL"18+73.41	69.96	-	RIGHT OF WAY OF DRG. 88-22-1 PROJECTED TO THE THREAD OF THE SOUTH UMPQUA RIVER	-
6129	138084.721	159920.007	-	-	"WL"19+50.35	-101.24	-	RIGHT OF WAY OF DRG. 88-22-1 PROJECTED TO THE THREAD OF THE SOUTH UMPQUA RIVER	-
6141	138049.538	159876.874	-	-	"WL"19+28.61	-50.00	-	EASEMENT FOR STREET PURPOSES FROM DRG. 88-22-1 PROJECTED TO THE THREAD OF THE SOUTH UMPQUA RIVER	-
6142	137982.663	159789.302	-	-	"WL"18+82.33	50.00	-	EASEMENT FOR STREET PURPOSES FROM DRG. 88-22-1 PROJECTED TO THE THREAD OF THE SOUTH UMPQUA RIVER	-

NW1/4 Sec 19, T. 27 S., R. 5 W., W.M.  
NE1/4 Sec 24, T. 27 S., R. 6 W., W.M.

FILED  
Date: 9-29-2015 By: *X*  
This survey consist of:  
Map: ST HWY 138-015 A-N  
Narrative:  
Corner Rpt: DOUGLAS COUNTY SURVEYOR

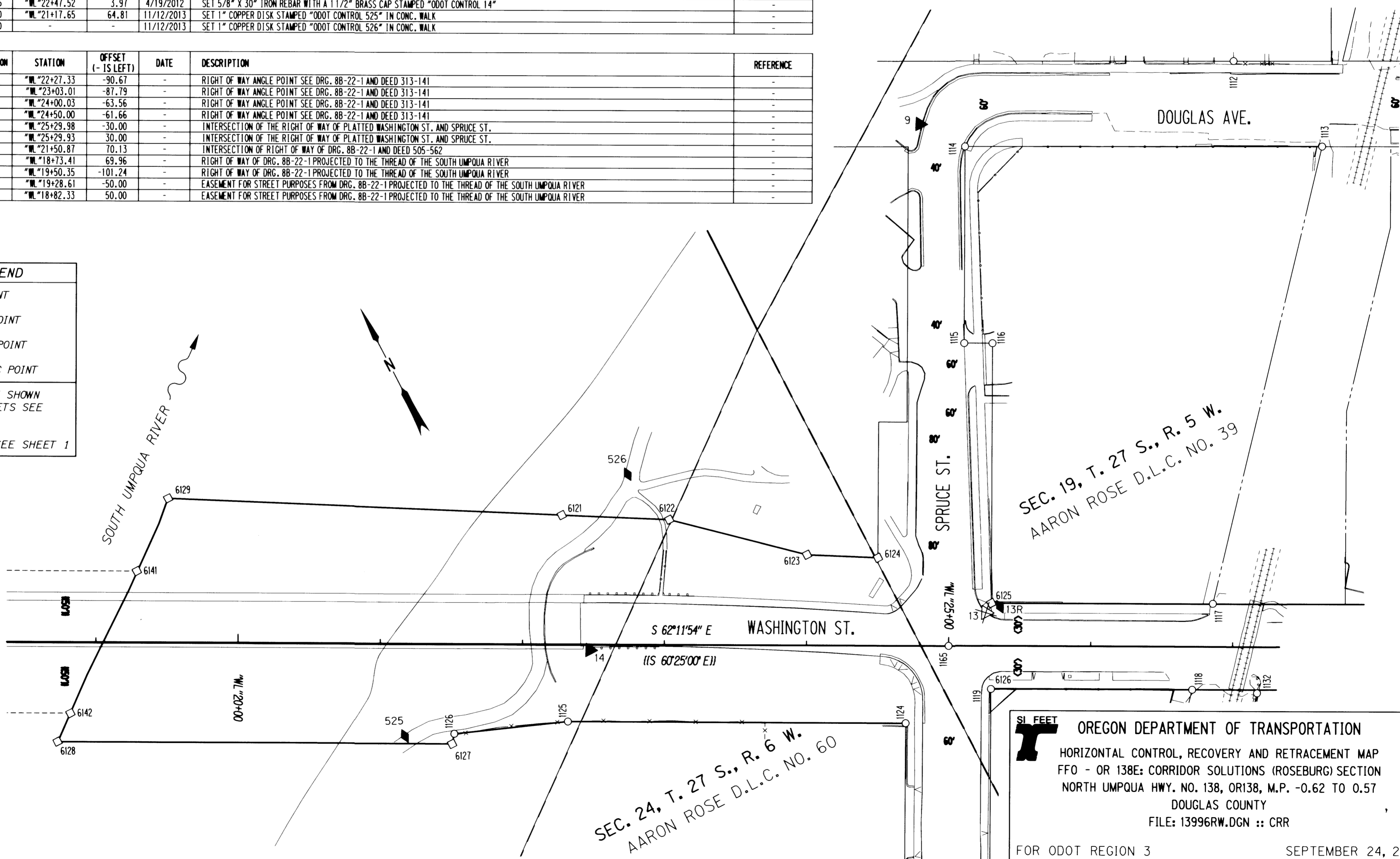
RECORD DATA	
(   )	ODOT R/W DRG. 88-22-1
< >	ORIGINAL PLAT
NO BRACKET	MEASURED/RESOLVED SUPERCEDES RECORD



**POINT LEGEND**

- FOUND MONUMENT
- CALCULATED POINT
- ▲ SET NETWORK POINT
- ◆ SET STRATEGIC POINT

FOR MONUMENTS NOT SHOWN ON INDIVIDUAL SHEETS SEE SHEETS 1 AND 2  
FOR LINE LEGEND SEE SHEET 1



REGISTERED PROFESSIONAL LAND SURVEYOR  
*Marshall R. Wagstaff*  
OREGON  
JANUARY 9, 2001  
MARSHALL R. WAGSTAFF  
49476  
EXPIRES: 6/30/2016

SI FEET OREGON DEPARTMENT OF TRANSPORTATION  
HORIZONTAL CONTROL, RECOVERY AND RETRACEMENT MAP  
FFO - OR 138E: CORRIDOR SOLUTIONS (ROSEBURG) SECTION  
NORTH UMPQUA HWY. NO. 138, OR138, M.P. -0.62 TO 0.57  
DOUGLAS COUNTY  
FILE: 13996RW.DGN :: CRR  
FOR ODOT REGION 3  
3500 NW. STEWART PKWY.  
ROSEBURG, OR. 97470  
SEPTEMBER 24, 2015  
SCALE: 1" = 50'  
SHEET 14 OF 14

ST. HWY. 138-015 N