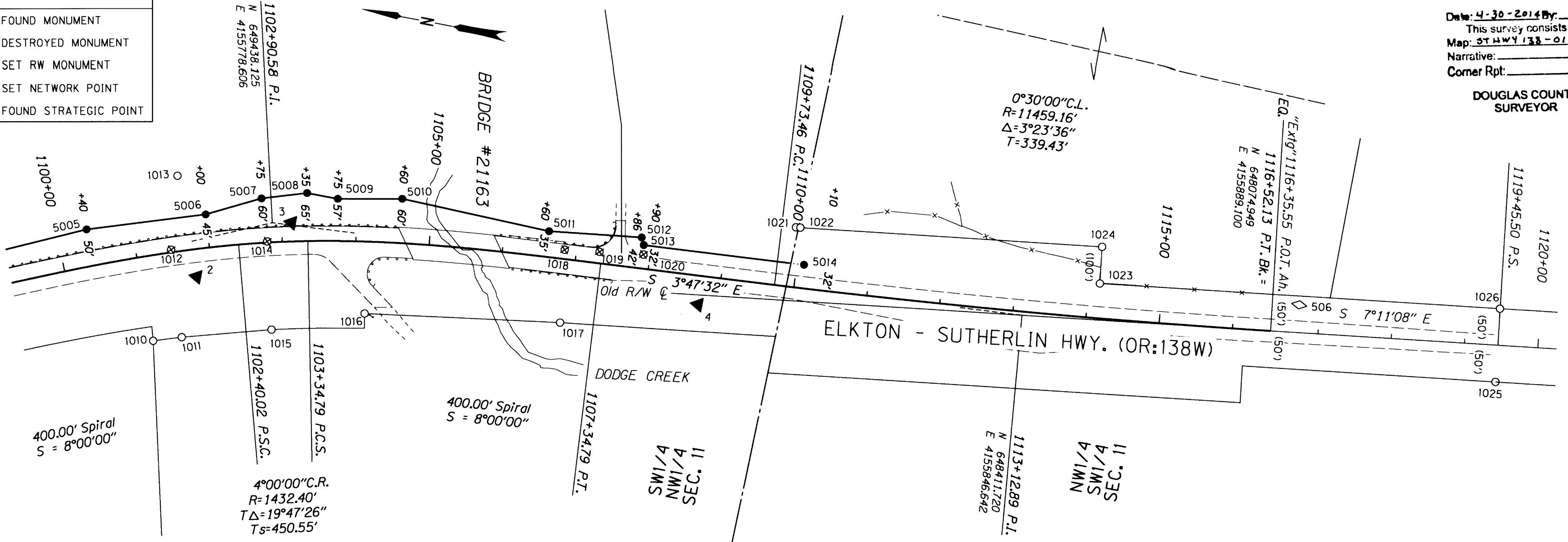


POINT LEGEND

- FOUND MONUMENT
- ⊗ DESTROYED MONUMENT
- SET RW MONUMENT
- ▲ SET NETWORK POINT
- ◇ FOUND STRATEGIC POINT

SEC. 10 AND 11 T.25S., R. 6W., W.M.

FILED  
 Date: 4-30-2014 By: JC  
 This survey consists of:  
 Map: ST HWY 138-014 A-D  
 Narrative:  
 Corner Rpt:  
 DOUGLAS COUNTY SURVEYOR



CONTROL MONUMENTS

PT. NO.	LDP NORTHING	LDP EASTING	ELEV.	DATE	DESCRIPTION	REFERENCE
506	648043.277	4155931.401	420.67	6/26/13	FD. 1 1/2" BRASS CAP STAMPED "ODOT CONTROL 506" GOOD COND. CARSONITE WITNESS POST NEARBY	ST. HWY. 138-010 A-L
2	649525.689	4155687.698		6/26/13	SET 5/8" X 30" I. REBAR WITH 1 1/2" BRASS CAP STAMPED "ODOT CONTROL 2"	
3	649412.188	4155783.817		6/26/13	SET 5/8" X 30" I. REBAR WITH 1 1/2" BRASS CAP STAMPED "ODOT CONTROL 3"	
4	648847.853	4155778.495		6/26/13	SET 5/8" X 30" I. REBAR WITH 1 1/2" BRASS CAP STAMPED "ODOT CONTROL 4"	

SET R/W MONUMENTS FC = FALSE CALL (DEFINES DIRECTION ONLY)

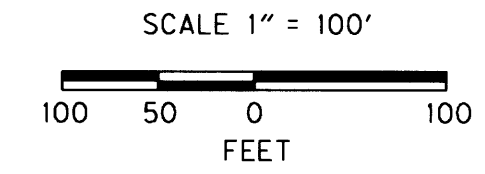
PT. NO.	LDP NORTHING	LDP EASTING	STATION	OFFSET (- S LT.)	DATE	DESCRIPTION
5005	649685.258	4155722.709	1100+40	-50.00	6/26/13	SET 5/8" X 30" IRON REBAR WITH 2" ALUM CAP STAMPED " OREGON DEPT OF TRANSP RIGHT OF WAY 5005"
5006	649529.369	4155772.77	1102+00	-45.00	6/26/13	SET 5/8" X 30" IRON REBAR WITH 2" ALUM CAP STAMPED " ODOT RIGHT OF WAY 5006"
5007	649458.631	4155808.185	1102+75	-60.00	6/26/13	SET 5/8" X 30" IRON REBAR WITH 2" ALUM CAP STAMPED " ODOT RIGHT OF WAY 5007"
5008	649398.742	4155827.124	1103+35	-65.00	6/26/13	SET 5/8" X 30" IRON REBAR WITH 2" ALUM CAP STAMPED " OREGON DEPT OF TRANSP RIGHT OF WAY 5008"
5009	649356.362	4155827.222	1103+75	-57.00	6/26/13	SET 5/8" X 30" IRON REBAR WITH 2" ALUM CAP STAMPED " ODOT RIGHT OF WAY 5009"
5010	649270.128	4155843.696	1104+60	-60.00	6/26/13	SET 5/8" X 30" IRON REBAR WITH 2" ALUM CAP STAMPED " ODOT RIGHT OF WAY 5010"
5011	649065.659	4155838.249	1106+60	-35.00	6/26/13	SET 5/8" X 30" IRON REBAR WITH 2" ALUM CAP STAMPED " ODOT RIGHT OF WAY 5011"
5012	648940.236	4155853.701	1107+86	-42.00	6/26/13	SET 5/8" X 30" IRON REBAR WITH 2" ALUM CAP STAMPED " ODOT RIGHT OF WAY 5012"
5013	648935.583	4155843.987	1107+90	-32.00	6/26/13	SET 5/8" X 30" IRON REBAR WITH 2" ALUM CAP STAMPED " ODOT RIGHT OF WAY 5013"
5014	648716.171	4155858.589	1110+10	-32.00	6/26/13	SET 5/8" X 30" IRON REBAR WITH 2" ALUM CAP STAMPED " OREGON DEPT OF TRANSP RIGHT OF WAY 5014FC"

RECOVERED MONUMENTS

PT. NO.	LDP NORTHING	LDP EASTING	DATE	DESCRIPTION	REFERENCE
1010	649568.031	4155590.792	10/28/08	FD. 5/8" I. REBAR FLUSH WITH SURFACE GOOD CONDITION	DRG.6B-24-16
1011	649530.547	4155602.870	10/28/08	FD. 5/8" I. REBAR 0.2' ABOVE SURFACE GOOD CONDITION WITH PADDLE "SHRW STA 1101+40.95 P.S.C. 70' RT."	DRG.6B-24-16
1013	649577.010	4155817.190	10/28/08	FD. 5/8" I. REBAR 0.35' ABOVE SURFACE POOR CONDITION BENT SLIGHTLY TO NE.	RM2-25
1015	649412.223	4155635.769	10/28/08	FD. 5/8" I. ROD 0.15' ABOVE SURFACE GOOD CONDITION WITH PADDLE "SHRW STA 1102+69.08 P.C.S. 70' RT."	DRG.6B-24-16
1016	649291.656	4155681.138	10/28/08	FD. 5/8" I. ROD 0.15' ABOVE SURFACE GOOD CONDITION	DRG.6B-24-16
1017	649027.832	4155718.827	10/28/08	FD. 5/8" I. ROD FLUSH W/ SURFACE GOOD CONDITION WITH PADDLE "SHRW STA 1106+69.08 P.T. 50' RT."	DRG.6B-24-16
1021	648736.330	4155906.565	10/28/08	FD. 5/8" I. ROD 0.2' ABOVE SURFACE GOOD CONDITION WITH PADDLE 100' LT.	DRG.6B-24-16
1022	648730.427	4155907.282	10/28/08	FD. 5/8" I. REBAR 0.3' ABOVE SURFACE GOOD CONDITION	RM2-25
1023	648315.378	4155909.244	10/16/08	FD. 5/8" I. ROD 0.2' BELOW SURFACE GOOD CONDITION WITH PADDLE "SHRW STA 114+00 P.O.T. 50' LT."	DRG.6B-24-16
1024	648321.663	4155958.834	10/28/08	FD. 5/8" I. ROD 0.1' BELOW SURFACE GOOD CONDITION WITH PADDLE "SHRW STA 114+00 P.O.T. 100' LT."	DRG.6B-24-16

DESTROYED R/W MONUMENTS

PT. NO.	LDP NORTHING	LDP EASTING	ELEV.	DATE	DESCRIPTION	REFERENCE
1012	649566.943	4155717.034	430.35	10/16/08	5/8" I. ROD 0.3' ABOVE SURFACE GOOD CONDITION WITH "4x4" WOOD POST AND PADDLE "SHRW STA 1101+40.95 P.S.C. 50' LT."	DRWG.6B-24-16
1014	649440.321	4155752.482		10/28/08	5/8" I. ROD 0.5' ABOVE SURFACE GOOD CONDITION WITH PADDLE "SHRW STA 1102+69.08 P.C.S. 50' LT."	DRWG.6B-24-16
1018	649040.159	4155817.549		10/16/08	5/8" I. ROD 0.2' ABOVE SURFACE GOOD CONDITION WITH PADDLE "SHRW STA 1106+69.08 P.T. 50' LT."	DRWG.6B-24-16
1019	648993.140	4155823.715		10/16/08	5/8" I. REBAR 0.15' ABOVE SURFACE GOOD CONDITION	RM2-25
1020	648933.660	4155831.334		10/16/08	5/8" I. REBAR FLUSH W/ SURFACE GOOD CONDITION	RM2-25



SEE LINE LEGEND ON SHEET 1

REGISTERED PROFESSIONAL LAND SURVEYOR  
  
 OREGON  
 NOV. 10, 2011  
 MICKEY D. CALVERT  
 75099  
 EXPIRES: 12/31/2015

SI FEET  
  
 OREGON DEPARTMENT OF TRANSPORTATION  
 RIGHT-OF-WAY BOUNDARY MONUMENTATION MAP  
 OR138: DODGE CR/CALAPOOYA CR BRIDGE REPLACEMENTS  
 ELKTON-SUTHERLIN HWY NO. 138 MP 20.74-22.22  
 DOUGLAS COUNTY  
 15970RW.DGN

FOR ODOT REGION 3  
 3500 NW STEWART PKWY.  
 ROSEBURG, OR. 97470

APRIL 24, 2014  
 SCALE: 1" = 100  
 SHEET 4 OF 4