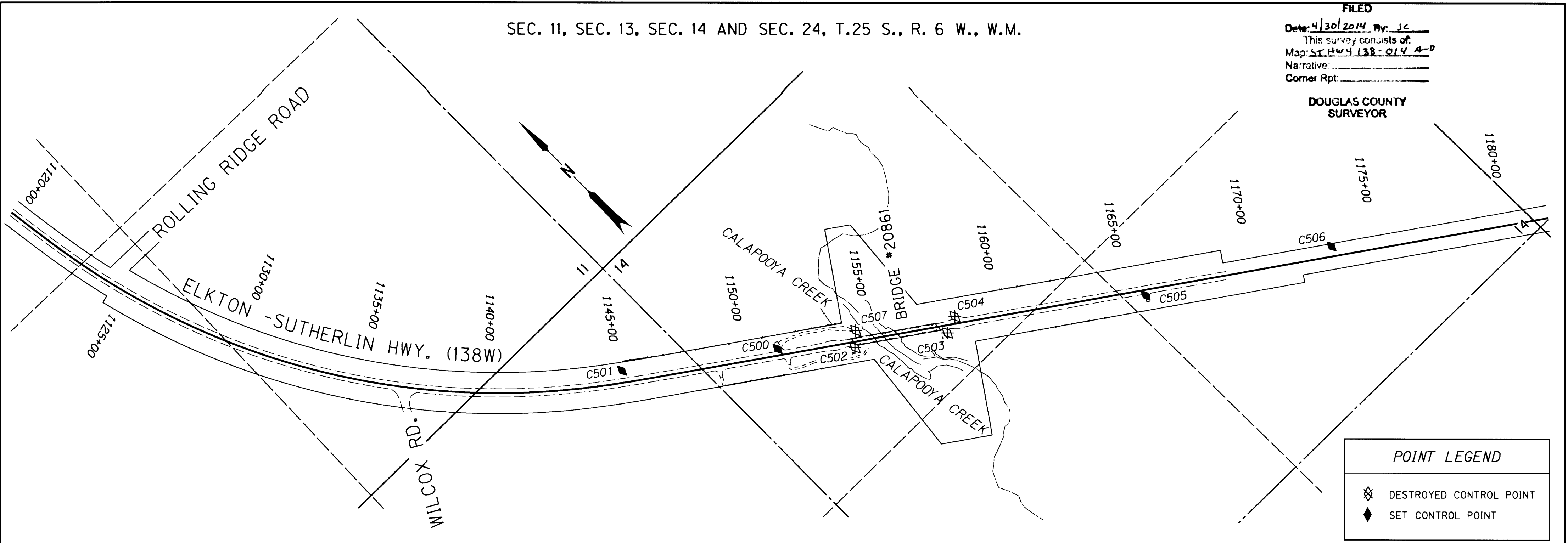


SEC. 11, SEC. 13, SEC. 14 AND SEC. 24, T.25 S., R. 6 W., W.M.

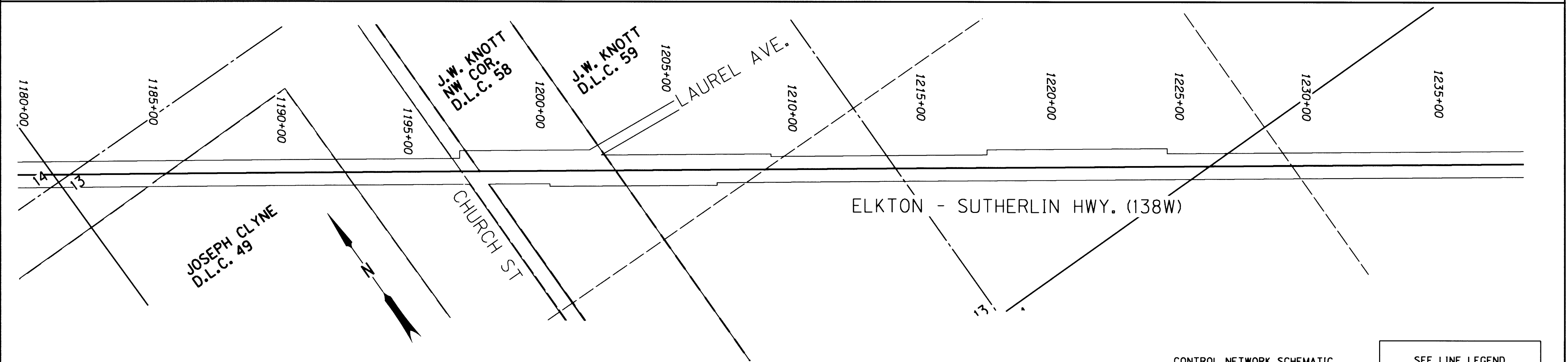
FILED
 Date: 4/30/2014 By: JC
 This survey consists of:
 Map: ST HWY 138-014 A-D
 Narrative:
 Corner Rpt:

DOUGLAS COUNTY
 SURVEYOR



POINT LEGEND

- DESTROYED CONTROL POINT
- SET CONTROL POINT



SEE LINE LEGEND
 ON SHEET 1

CONTROL MONUMENTS

PT. NO.	LDP NORTHING	LDP EASTING	ELEV.	DATE	DESCRIPTION	REFERENCE
C500	645256.500	4157660.600	393.33	6/26/13	FD. 5/8" I. REBAR WITH 1 1/2" BRASS CAP STAMPED "ODOT CONTROL C500" 0.1' BELOW SURFACE	ST. HWY. 138-010
C501	645624.270	4157172.860	392.38	6/26/13	FD. 5/8" I. REBAR WITH 1 1/2" BRASS CAP STAMPED "ODOT CONTROL C501" 0.1' BELOW SURFACE	ST. HWY. 138-010
C505	644390.200	4158818.380	393.83	6/26/13	FD. 5/8" I. REBAR WITH 1 1/2" BRASS CAP STAMPED "ODOT CONTROL C505" 0.1' BELOW SURFACE	ST. HWY. 138-010
C506	644013.860	4159463.820	393.49	6/26/13	FD. 5/8" I. REBAR WITH 1 1/2" BRASS CAP STAMPED "ODOT CONTROL C506" 0.1' BELOW SURFACE	ST. HWY. 138-010

DESTROYED CONTROL MONUMENTS

PT. NO.	LDP NORTHING	LDP EASTING	ELEV.	DATE	DESCRIPTION	REFERENCE
C502	645047.030	4157876.420	396.11	6/26/13	5/8" I. REBAR WITH 1 1/2" BRASS CAP STAMPED "ODOT CONTROL C502" 0.1' BELOW SURFACE	ST. HWY. 138-010
C503	644832.080	4158170.660	394.75	6/26/13	5/8" I. REBAR WITH 1 1/2" BRASS CAP STAMPED "ODOT CONTROL C503" 0.1' BELOW SURFACE	ST. HWY. 138-010
C504	644856.970	4158236.100	394.67	6/26/13	5/8" I. REBAR WITH 1 1/2" BRASS CAP STAMPED "ODOT CONTROL C504" 0.1' BELOW SURFACE	ST. HWY. 138-010
C507	645091.780	4157925.180	387.68	6/26/13	5/8" I. REBAR WITH 1 1/2" BRASS CAP STAMPED "ODOT CONTROL C507" 0.1' BELOW SURFACE	ST. HWY. 138-010

REGISTERED
 PROFESSIONAL
 LAND SURVEYOR

[Signature]
 OREGON
 NOV. 10, 2011
 MICKEY D. CALVERT
 75099
 EXPIRES: 12/31/2015

SI FEET
OREGON DEPARTMENT OF TRANSPORTATION
 RIGHT-OF-WAY BOUNDARY MONUMENTATION MAP
 OR138: DODGE CR/CALAPOOYA CR BRIDGE REPLACEMENTS
 ELKTON-SUTHERLIN HWY NO. 138 MP 20.74-22.22
 DOUGLAS COUNTY
 15970RW.DGN

FOR ODOT REGION 3
 3500 NW. STEWART PKWY.
 ROSEBURG, OR. 97470

APRIL 24, 2014
 NOT TO SCALE
 SHEET 2 OF 4