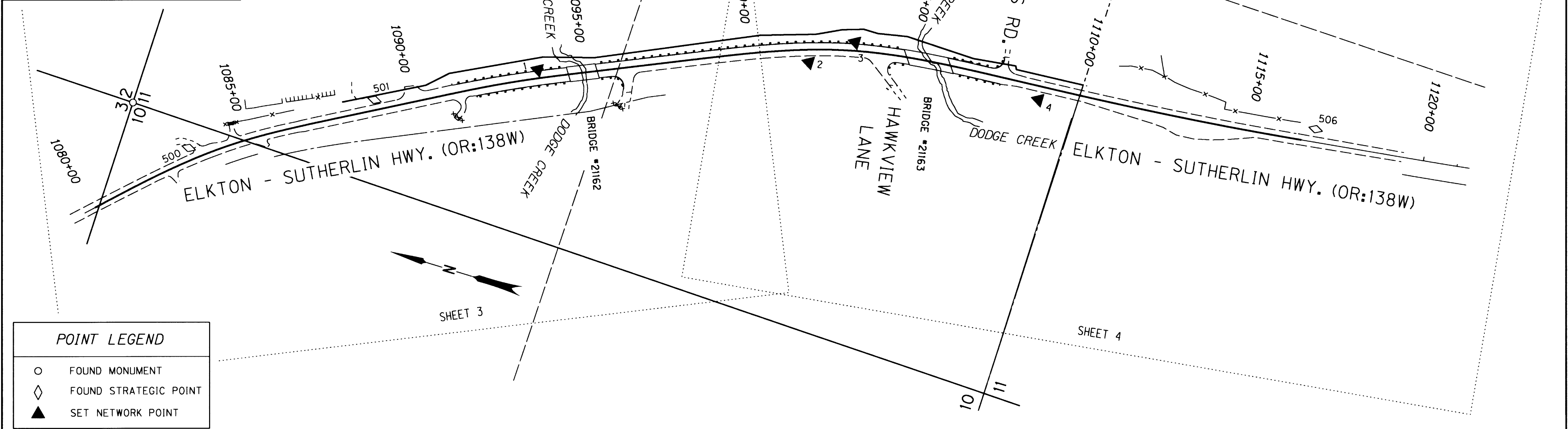


BOUNDARY LINE LEGEND	
---	EXISTING HIGHWAY RIGHT OF WAY
---	EXISTING PROPERTY
---	EXISTING R/W CENTERLINE
---	1/4 SECTION
---	1/16 SECTION OR GOVERNMENT LOT
---	RELOCATED R/W CENTERLINE
---	NEW RIGHT OF WAY

CONTROL NETWORK SCHEMATIC  
SCALE: 1" = 200'

SEC. 11 T.25S., R.6W., W.M.

FILED  
Date: 4/13/2014 By: JC  
This survey consists of:  
Map: ST HWY. 138-014 A-D  
Narrative:  
Corner Rpt:  
DOUGLAS COUNTY SURVEYOR



POINT LEGEND	
○	FOUND MONUMENT
◇	FOUND STRATEGIC POINT
▲	SET NETWORK POINT

**NARRATIVE**

**PURPOSE**  
THIS SURVEY MONUMENTS THE RIGHT-OF-WAY (R/W) ACQUIRED FOR THE CONSTRUCTION OF OR138W; DODGE CR/CALAPOOYA CR BRIDGE REPLACEMENTS AN OREGON DEPARTMENT OF TRANSPORTATION (ODOT) PROJECT, AS SHOWN ON ODOT DRAWING (DRG) 11B-4-7. NEW R/W WAS ONLY PURCHASED IN THE AREA OF THE DODGE CREEK BRIDGES WHICH HAS AN ODOT KEY NUMBER OF 15970. THE CALAPOOYA CREEK BRIDGE SITE WHICH DID NOT RESULT IN PURCHASING ANY NEW R/W HAD AN ORIGINAL ODOT KEY NUMBER 14813. THE CALAPOOYA CREEK PORTION OF THIS PROJECT WAS COMBINED WITH THE DODGE CREEK PORTION AND GIVEN AN ODOT KEY NUMBER 16796. THIS SURVEY IS LOCATED ON ELKTON-SUTHERLIN HWY. (OR:138W) DOUGLAS COUNTY, BETWEEN MILEPOSTS 20-23. THIS PROJECT REPLACED THREE BRIDGES AND IMPROVED THE HIGHWAY ALIGNMENT WITHIN THE BOUNDARIES OF THE PROJECT.

**PROCEDURE**  
THE BEGINNING OF THIS MONUMENTATION SURVEY IS AT STATION 1088+00 AND ENDS AT 1110+10 ON ELKTON-SUTHERLIN HWY. (OR:138W). THE EXISTING R/W WAS RESOLVED IN AN ODOT SURVEY FILED WITH THE DOUGLAS COUNTY SURVEYOR'S OFFICE AS ST. HWY. 138-010 A-L ON 10/19/2009.

MANY OF THE EXISTING CONTROL NETWORK POINTS WERE DEMOLISHED DURING CONSTRUCTION AND NEW CONTROL NETWORK POINTS 1 THROUGH 4 WERE SET. STRATEGIC POINTS 500, 501, 506 WERE RECOVERED AND PROVEN TO BE UNDISTURBED. WHILE CALCULATING THE NETWORK POINTS 500 AND 506 WERE HELD AS FIXED AND THE POSITIONS OF POINTS 1 THRU 4 AND 501 WERE CALCULATED. THE R/W MONUMENTATION WAS THEN ESTABLISHED BY UTILIZING THE ALIGNMENT AND THE STATION OFFSET CALLS GIVEN ON ODOT DRG 11B-4-7 AND CONFIRMED IN THE DEEDS. THE CALLS ARE RELATIVE TO THE RELOCATED R/W CENTERLINE OF ELKTON-SUTHERLIN HWY. (OR:138W) AND MONUMENTS WERE SET BY RADIAL COORDINATE STAKEOUT FROM THE NETWORK CONTROL POINTS.

**COORDINATES AND BASIS OF BEARINGS**  
THE BASIS OF BEARING IS BASED ON THE OREGON COORDINATE SYSTEM (OCS) NAD 83 (1998) EPOCH 2002, SOUTH ZONE. THIS SURVEY UTILIZES A LOCAL DATUM PLANE (LDP) WHICH IS RELATIVE TO THE OCS, WITH RESPECT TO THE LOCAL LATITUDE AND GROUND ELEVATION. THE LDP COORDINATES DEFINE TRUE GROUND DISTANCES. TO CONVERT LDP COORDINATES TO THE OREGON COORDINATE SYSTEM MULTIPLY THE COORDINATES BY 0.99988768624. ALL COORDINATES ARE IN INTERNATIONAL FEET.

**HORIZONTAL AND VERTICAL CONTROL**  
EXISTING POINTS 500, 501 AND 506 WERE HELD FOR HORIZONTAL AND VERTICAL CONTROL FOR THIS PROJECT. A DILIGENT SEARCH FOR NETWORK CONTROL POINTS DETERMINED THAT POINTS 502-505 AND 509, 514, AND 517 HAVE BEEN DESTROYED. ALL OTHER EXISTING NETWORK POINTS WERE NOT NEEDED AND NO SEARCH WAS CONDUCTED. THE RESULTS OF THIS SEARCH AND THE SEARCH FOR EXISTING MONUMENTS ARE SHOWN IN THE MONUMENT TABLES OF THIS SURVEY.

**EQUIPMENT USED**  
A LEICA TS-15 TOTAL STATION WAS USED FOR THE HORIZONTAL NETWORK CONTROL AND GATHERING TOPOGRAPHIC DATA. IT HAS THE FOLLOWING ACCURACY: STANDARD ANGULAR ERROR +/- 1 SECOND; STANDARD DISTANCE ERROR OF +/- 1MM, + 1.5 PPM.

**NOTES**  
CONTROL POINTS ON THIS SURVEY DO NOT REPRESENT PROPERTY LINES OR RIGHT OF WAY LINES. THEY ARE INTENDED TO PERPETUATE THE ALIGNMENTS AND RIGHT OF WAY DEVELOPED FOR THIS PROJECT IN CONFORMANCE WITH ORS CHAPTER 209, SECTION 155. WHITE CARSONITE WITNESS POSTS MARKED "ODOT RIGHT OF WAY BOUNDARY MARKER NEARBY" WERE SET NEAR RIGHT OF WAY POINTS 5000 THROUGH 5014. PERMANENT EASEMENTS ACQUIRED FOR THIS PROJECT ARE NOT SHOWN ON THIS RECORD OF SURVEY. REFER TO ODOT DRG 11B-4-7 TO SEE EASEMENTS OF RECORD AND DEED REFERENCES. RIGHT OF WAY INFORMATION SHOWN WITHOUT PARENTHESIS OR BRACKETS IS MEASURED. IF MEASURED DATA DIFFERS FROM RECORD DATA, BOTH ARE SHOWN. IF ONLY RECORD INFORMATION WAS SHOWN, IT WAS HELD.

REGISTERED PROFESSIONAL LAND SURVEYOR  
*Mickey D. Calvert*  
OREGON  
NOV. 10, 2011  
MICKEY D. CALVERT  
75099  
EXPIRES: 12/31/2015

SI FEET  
**OREGON DEPARTMENT OF TRANSPORTATION**  
RIGHT-OF-WAY BOUNDARY MONUMENTATION MAP  
OR138: DODGE CR/CALAPOOYA CR BRIDGE REPLACEMENTS  
ELKTON-SUTHERLIN HWY NO. 138 MP 20.74-22.22  
DOUGLAS COUNTY  
15970RW.DGN

FOR ODOT REGION 3  
3500 NW, STEWART PKWY.  
ROSEBURG, OR. 97470

APRIL 24, 2014  
SCALE: 1" = 200  
SHEET 1 OF 4