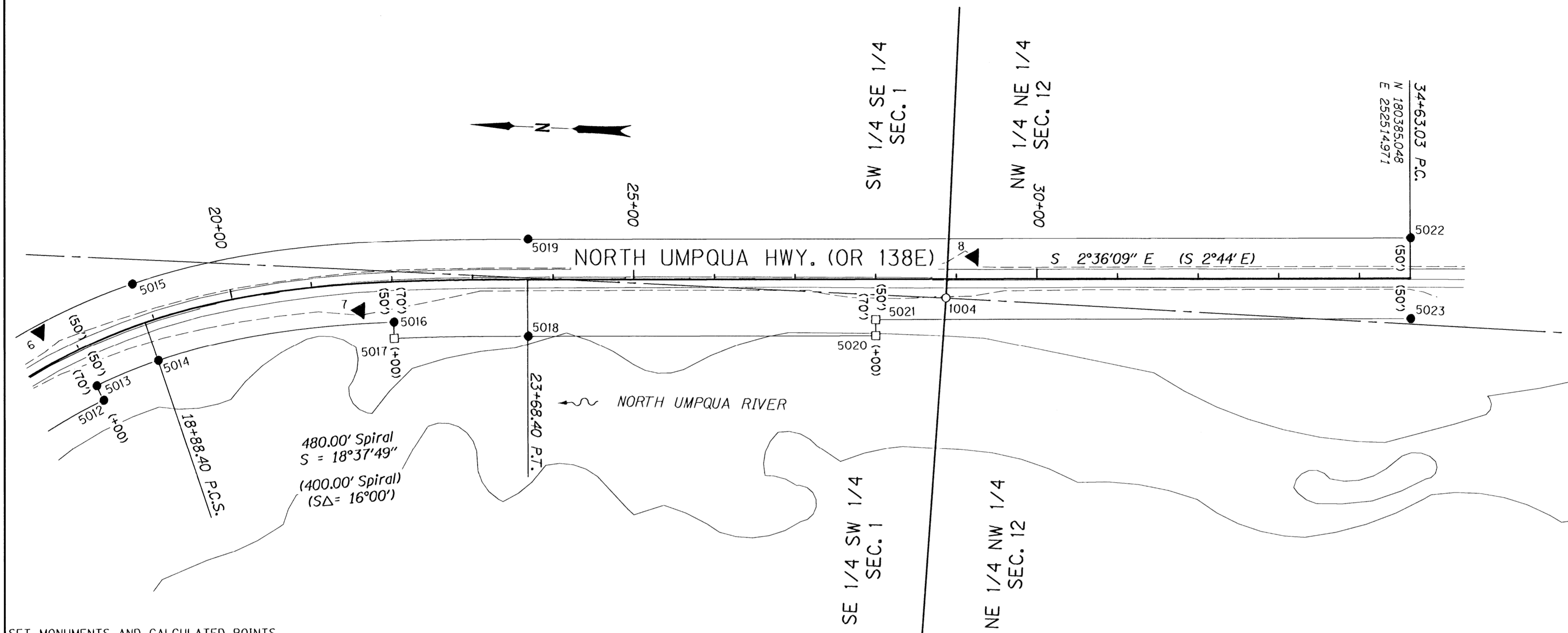


SEC. 1 & 12, T. 26 S., R. 3 W., W.M.

FILED  
 Date: 2-13-2013 By: JC  
 This survey consists of:  
 Map: ST HWY 138-013A-C  
 Narrative: \_\_\_\_\_  
 Corner Rpt: \_\_\_\_\_

DOUGLAS COUNTY  
 SURVEYOR



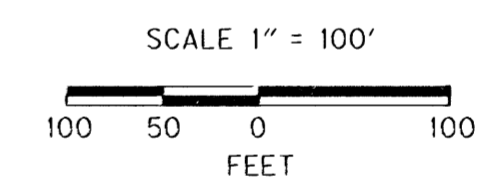
**BOUNDARY LINE LEGEND**

	EXISTING HIGHWAY RIGHT OF WAY
	EXISTING PROPERTY
	SECTION
	1/4 SECTION
	1/16 SECTION OR GOVERNMENT LOT

**RECORD DATA**

( ) RECORD DATA PER BUREAU OF PUBLIC ROADS ADMINIST. MAP DATED DEC. 9, 1948 (BLM RECORDS OR 011888)

NO MEASURED/RESOLVED SUPERCEDES RECORD  
 BRACKET



**POINT LEGEND**

- SET NETWORK POINT
- FOUND MONUMENT
- SET RIGHT OF WAY MONUMENT
- CALCULATED POINT

SET MONUMENTS AND CALCULATED POINTS

PT. NO.	LDP NORTHING	LDP EASTING	STATION	OFFSET (- IS LT.)	DATE	DESCRIPTION
5000	182458.983	250701.201	1182+79.13	50.00	1/19/12	SET 5/8" X 30" IRON REBAR W/ 2" ALUMINUM CAP STAMPED "OREGON DEPT OF TRANSP RIGHT OF WAY 5000", FLUSH WITH SURFACE (SEE SHEET 2)
5001	182558.638	250709.252	1182+79.13	-50.00	1/19/12	SET 5/8" X 30" IRON REBAR W/ 2" ALUMINUM CAP STAMPED "OREGON DEPT OF TRANSP RIGHT OF WAY 5001", FLUSH WITH SURFACE (SEE SHEET 2)
5002	182516.384	251207.824	5+00.00	-50.00	1/19/12	SET 5/8" X 30" IRON REBAR W/ 2" ALUMINUM CAP STAMPED "ODOT RIGHT OF WAY 5002", FLUSH WITH SURFACE (SEE SHEET 2)
5003	182528.352	251208.429	5+00.00	-60.00	1/19/12	SET 5/8" X 30" IRON REBAR W/ 2" ALUMINUM CAP STAMPED "OREGON DEPT OF TRANSP RIGHT OF WAY 5003", FLUSH WITH SURFACE (SEE SHEET 2)
5004	182489.156	251668.945	9+62.01	-60.00	1/20/12	SET 5/8" X 30" IRON REBAR W/ 2" ALUMINUM CAP STAMPED "OREGON DEPT OF TRANSP RIGHT OF WAY 5004", FLUSH WITH SURFACE (SEE SHEET 2)
5005	182379.513	251860.089	9+62.01	50.00	1/28/12	SET 5/8" X 30" IRON REBAR W/ 2" ALUMINUM CAP STAMPED "ODOT RIGHT OF WAY 5005", FLUSH WITH SURFACE (SEE SHEET 2)
5006	182355.450	251851.853	11+62.01	50.00		CALCULATED POINT (POINT NOT SET, SEE SHEET 2)
5007	182462.892	251875.237	11+62.01	-60.00		CALCULATED POINT (POINT NOT SET, SEE SHEET 2)
5008	182417.505	252017.145	13+00.00	-60.00	1/20/12	SET 5/8" X 30" IRON REBAR W/ 2" ALUMINUM CAP STAMPED "ODOT RIGHT OF WAY 5008", FLUSH WITH SURFACE (SEE SHEET 2)
5009	182408.306	252013.223	13+00.00	-50.00	1/20/12	SET 5/8" X 30" IRON REBAR W/ 2" ALUMINUM CAP STAMPED "OREGON DEPT OF TRANSP RIGHT OF WAY 5009", FLUSH WITH SURFACE (SEE SHEET 2)
5010	182158.055	252202.259	16+00.00	50.00		CALCULATED POINT (POINT NOT SET, SEE SHEET 2)
5011	182144.258	252187.781	18+00.00	70.00		CALCULATED POINT (POINT NOT SET, SEE SHEET 2)
5012	181997.984	252293.501	18+00.00	70.00	1/23/12	SET 5/8" X 30" IRON REBAR W/ 2" ALUMINUM CAP STAMPED "ODOT RIGHT OF WAY 5012", FLUSH WITH SURFACE
5013	182007.403	252311.144	18+00.00	50.00	1/23/12	SET 5/8" X 30" IRON REBAR W/ 2" ALUMINUM CAP STAMPED "OREGON DEPT OF TRANSP RIGHT OF WAY 5013", FLUSH WITH SURFACE
5014	181932.551	252345.515	18+88.40	50.00	1/24/12	SET 5/8" X 30" IRON REBAR W/ 2" ALUMINUM CAP STAMPED "ODOT RIGHT OF WAY 5014", FLUSH WITH SURFACE
5015	181968.766	252438.727	18+88.40	-50.00	1/24/12	SET 5/8" X 30" IRON REBAR W/ 2" ALUMINUM CAP STAMPED "ODOT RIGHT OF WAY 5015", FLUSH WITH SURFACE
5016	181842.378	252405.560	22+00.00	50.00	1/24/12	SET 5/8" X 30" IRON REBAR W/ 2" ALUMINUM CAP STAMPED "ODOT RIGHT OF WAY 5016", FLUSH WITH SURFACE
5017	181840.871	252385.832	22+00.00	70.00		CALCULATED POINT (POINT NOT SET)
5018	181475.385	252395.340	23+68.40	70.00	1/24/12	SET 5/8" X 30" IRON REBAR W/ 2" ALUMINUM CAP STAMPED "ODOT RIGHT OF WAY 5018", FLUSH WITH SURFACE
5019	181480.813	252515.216	23+68.40	-50.00	1/24/12	SET 5/8" X 30" IRON REBAR W/ 2" ALUMINUM CAP STAMPED "OREGON DEPT OF TRANSP RIGHT OF WAY 5019", SET 0.20' ABOVE SURFACE
5020	181044.214	252414.937	28+00.00	70.00		CALCULATED POINT (POINT NOT SET)
5021	181045.122	252434.917	28+00.00	50.00		CALCULATED POINT (POINT NOT SET)
5022	180387.318	252584.919	34+63.03	-50.00	1/28/12	SET 5/8" X 30" IRON REBAR W/ 2" ALUMINUM CAP STAMPED "ODOT RIGHT OF WAY 5022", FLUSH WITH SURFACE
5023	180384.778	252465.022	34+63.03	50.00	1/28/12	SET 5/8" X 30" IRON REBAR W/ 2" ALUMINUM CAP STAMPED "ODOT RIGHT OF WAY 5023", FLUSH WITH SURFACE

REGISTERED PROFESSIONAL LAND SURVEYOR

*Andrew David Ausland*

OREGON  
 JULY 15, 2003  
 ANDREW DAVID AUSLAND  
 56136  
 EXPIRES: 12/31/2013

**CONTROL MONUMENTS**

PT. NO.	LDP NORTHING	LDP EASTING	STATION	OFFSET (- IS LT.)	DATE	DESCRIPTION
7	181685.420	252417.828	21+57.39	33.85	8/2/11	SET 1" COPPER DISK STAMPED "ODOT CONTROL 7", FLUSH WITH PAVEMENT
8	180927.648	252517.378	29+21.10	-27.04	8/2/11	SET 1" COPPER DISK STAMPED "ODOT CONTROL 8", FLUSH WITH PAVEMENT

**RECOVERED MONUMENTS**

PT. NO.	LDP NORTHING	LDP EASTING	STATION	OFFSET (- IS LT.)	DATE	DESCRIPTION	REFERENCE
1004	180959.295	252465.249	28+87.12	23.60	8/4/11	FD. 2 1/2" BRASS DISK STAMPED T28S R3W 1/4 S1/S12 DOUGLAS COUNTY SURVEYOR 1977", 1.0 FT. FROM EDGE OF PAVEMENT ON HIGHWAY, 0.6 FT. BELOW SURFACE, GOOD CONDITION	D.C.S.O. 1977

**OREGON DEPARTMENT OF TRANSPORTATION**

HORIZONTAL CONTROL, RECOVERY, RETRACEMENT, & BOUNDARY MONUMENTATION MAP  
 OR 138E: TIOGA LANE RIGHT OF WAY  
 NORTH UMPQUA HWY. NO. 138, M.P. 22.03 TO 22.79  
 DOUGLAS COUNTY  
 FILE: ORI38ERW.DGN

FOR ODOT REGION 3  
 3500 NW. STEWART PKWY.  
 ROSEBURG, OR. 97470

FEBRUARY 16, 2012  
 SCALE: 1" = 100'  
 SHEET 3 OF 3