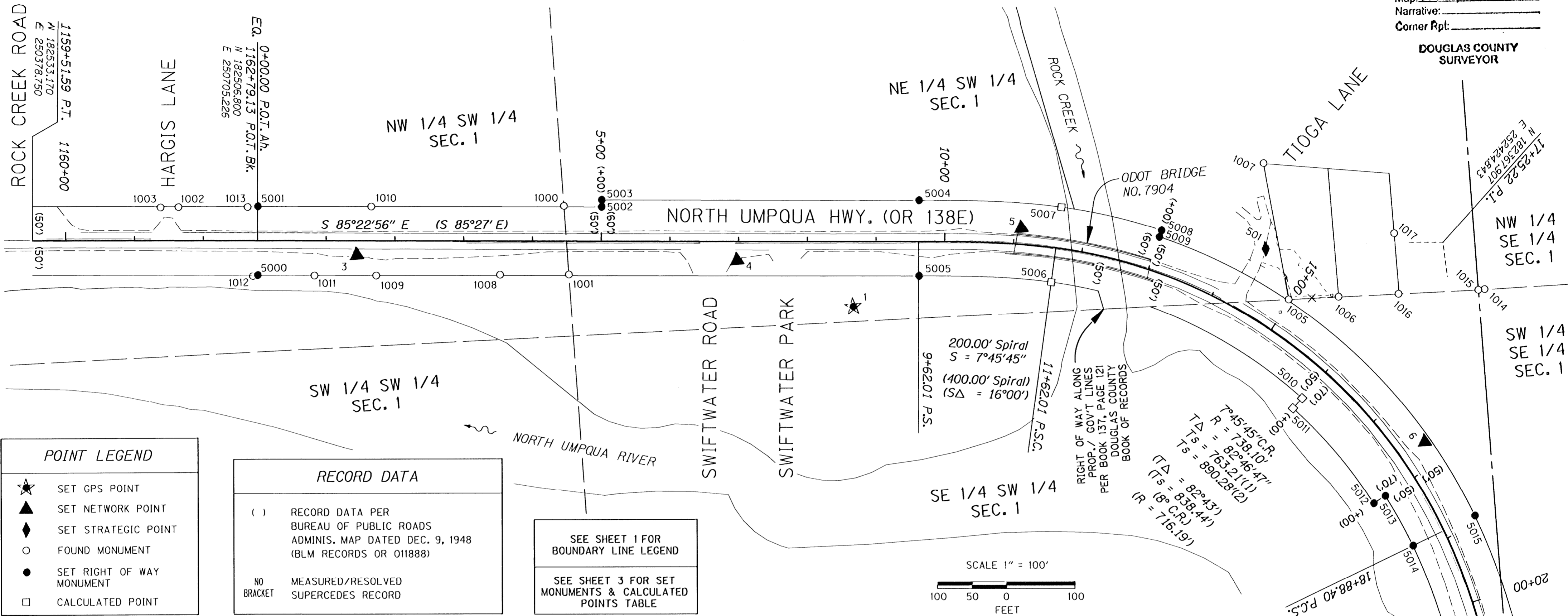


SEC. 1, T. 26 S., R. 3 W., W.M.

FILED  
 Date: 2-23-2012 By: JC  
 This survey consists of:  
 Map: ST HWY 138-013 A-C  
 Narrative:  
 Corner Rpt:

DOUGLAS COUNTY  
 SURVEYOR



**POINT LEGEND**

- ★ SET GPS POINT
- ▲ SET NETWORK POINT
- ◆ SET STRATEGIC POINT
- FOUND MONUMENT
- SET RIGHT OF WAY MONUMENT
- CALCULATED POINT

**RECORD DATA**

( ) RECORD DATA PER BUREAU OF PUBLIC ROADS ADMINIS. MAP DATED DEC. 9, 1948 (BLM RECORDS OR 011888)

NO MEASURED/RESOLVED  
 BRACKET SUPERCEDES RECORD

SEE SHEET 1 FOR BOUNDARY LINE LEGEND

SEE SHEET 3 FOR SET MONUMENTS & CALCULATED POINTS TABLE

**CONTROL MONUMENTS**

PT. NO.	LDP NORTHING	LDP EASTING	STATION	OFFSET (- IS LT.)	DATE	DESCRIPTION
1	182342.776	251561.182	8+66.38	94.58	8/1/11	SET 1" COPPER DISK STAMPED "ODOT CONTROL 1", FLUSH WITH PAVEMENT
2	182549.959	249828.868			8/1/11	SET 1" COPPER DISK STAMPED "ODOT CONTROL 2", FLUSH WITH PAVEMENT (SEE SHEET 1)
3	182474.418	250847.191	1+44.11	20.85	8/2/11	SET 1" COPPER DISK STAMPED "ODOT CONTROL 3", FLUSH WITH PAVEMENT
4	182423.255	251397.984	6+97.23	27.50	8/2/11	SET 1" COPPER DISK STAMPED "ODOT CONTROL 4", FLUSH WITH PAVEMENT
5	182437.374	251814.070	11+09.17	-23.73	8/2/11	SET 1" COPPER DISK STAMPED "ODOT CONTROL 5", FLUSH WITH PAVEMENT
6	182081.277	252374.628	17+66.60	-41.59	8/2/11	SET 5/8" X 30" IRON REBAR WITH 1 1/2" BRASS CAP STAMPED "ODOT CONTROL 6", 0.1 FT. BELOW SURFACE
501	182378.683	252166.050	14+35.33	-96.68	8/4/11	SET MAG NAIL AND WASHER STAMPED "ODOT"

**RECOVERED MONUMENTS** OD=OUTSIDE DIAMETER

PT. NO.	LDP NORTHING	LDP EASTING	STATION	OFFSET (- IS LT.)	DATE	DESCRIPTION	REFERENCE
1000	182521.844	251153.707	4+45.81	-51.10	8/4/11	FD. 1 1/2" O.D. IRON PIPE, 0.3 FT. ABOVE SURFACE, GOOD CONDITION	VOL. 7 P. 45
1001	182421.898	251152.906	4+53.06	48.58	8/4/11	FD. 2 1/4" O.D. IRON PIPE, 0.1 FT. ABOVE SURFACE, GOOD CONDITION	VOL. 7 P. 45
1002	182564.625	250594.365	1161+63.97	-48.71	8/4/11	FD. 2 1/4" O.D. IRON PIPE, 0.2 FT. ABOVE SURFACE, FAIR CONDITION	VOL. 7 P. 45
1003	182566.215	250568.366	1161+37.93	-48.20	8/4/11	FD. 2 1/4" O.D. IRON PIPE WITH TEE FITTING AT TOP WITH 0.5 FT. PORTION OF PIPE IN NORTHERLY DIRECTION, 0.3 FT. BELOW SURFACE, GOOD CONDITION	VOL. 7 P. 45
1005	182302.904	252194.307	14+96.57	-51.92	8/4/11	FD. 5/8" IRON REBAR WITH YELLOW PLASTIC CAP STAMPED "AA SURVEYING", FLUSH WITH SURFACE, GOOD CONDITION	M 128-78
1006	182301.156	252267.014	15+47.92	-97.68	8/4/11	FD. 5/8" IRON REBAR WITH 1 1/4" YELLOW PLASTIC CAP STAMPED "AA SURVEYING", FLUSH WITH SURFACE, GOOD CONDITION	M 128-78
1007	182502.963	252173.572			8/4/11	FD. 5/8" IRON REBAR WITH 1 1/4" YELLOW PLASTIC CAP STAMPED "AA SURVEYING", 0.1 FT. ABOVE SURFACE, GOOD CONDITION	M 128-78
1008	182429.465	251053.199	3+53.07	49.07	8/4/11	FD. 2 1/4" O.D. IRON PIPE WITH TEE FITTING, 0.2 FT. ABOVE SURFACE, GOOD CONDITION	VOL. 7 P. 45
1009	182442.534	250873.464	1+72.87	50.51	8/4/11	FD. 2 1/4" O.D. IRON PIPE WITH DAMAGED TOP, 0.1 FT. BELOW SURFACE, FAIR CONDITION	VOL. 7 P. 45
1010	182543.039	250874.360	1+65.69	-49.74	8/4/11	FD. 2 1/4" O.D. IRON PIPE, 0.3 FT. BELOW SURFACE, GOOD CONDITION	VOL. 7 P. 45
1011	182449.635	250783.907	0+83.03	50.65	8/4/11	FD. 2 1/4" O.D. IRON PIPE, 0.3 FT. ABOVE SURFACE, GOOD CONDITION	VOL. 7 P. 45
1012	182458.047	250694.425	1162+72.45	51.48	8/4/11	FD. 1" O.D. IRON PIPE, 0.5 FT. ABOVE SURFACE, GOOD CONDITION	VOL. 7 P. 45
1013	182558.814	250694.878	1162+64.80	-48.82	8/4/11	FD. 1" O.D. IRON PIPE WITH HUB AND TACK INSIDE, 0.2 FT. ABOVE SURFACE, GOOD CONDITION	VOL. 7 P. 45
1014	182295.378	252479.616			8/29/11	FD. 3 1/4" BRASS CAP ON A 2 1/2" O.D. IRON PIPE STAMPED "US CADASTRAL SURVEY BUREAU OF LAND MANAGEMENT PENALTY \$250 FOR REMOVAL S1 CS 1/18 1983", 0.6 FT. ABOVE SURFACE, GOOD CONDITION	B.L.M. 1963
1015	182295.055	252470.421			8/29/11	FD. 3/4" SQUARE HEADED BOLT INSIDE 3" O.D. IRON PIPE WITH MUSHROOMED HEAD, 0.5 FT. ABOVE SURFACE, GOOD CONDITION	CS 39/125
1016	182298.514	252354.216			8/29/11	FD. 5/8" IRON ROD LEANING SLIGHTLY, 0.7 FT. ABOVE SURFACE, FAIR CONDITION	M 30-48
1017	182388.377	252354.935			8/29/11	FD. 5/8" IRON ROD BENT BADLY TIED WHERE ENTERS GROUND, 0.5 FT. ABOVE SURFACE, POOR CONDITION	M 30-48

REGISTERED PROFESSIONAL LAND SURVEYOR

*Andrew David Ausland*

OREGON  
 JULY 15, 2003  
 ANDREW DAVID AUSLAND  
 56136  
 EXPIRES: 12/31/2013

**SI FEET** OREGON DEPARTMENT OF TRANSPORTATION

HORIZONTAL CONTROL, RECOVERY, RETRACEMENT, & BOUNDARY MONUMENTATION MAP OR 138E: TIOGA LANE RIGHT OF WAY NORTH UMPQUA HWY. NO. 138, M.P. 22.03 TO 22.79 DOUGLAS COUNTY

FILE: OR138ERW.DGN

FOR ODOT REGION 3 3500 NW. STEWART PKWY. ROSEBURG, OR. 97470

FEBRUARY 16, 2012 SCALE: 1" = 100' SHEET 2 OF 3