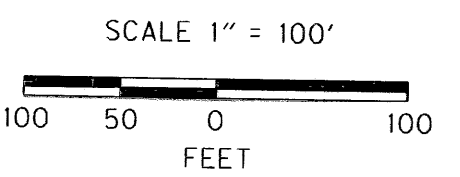
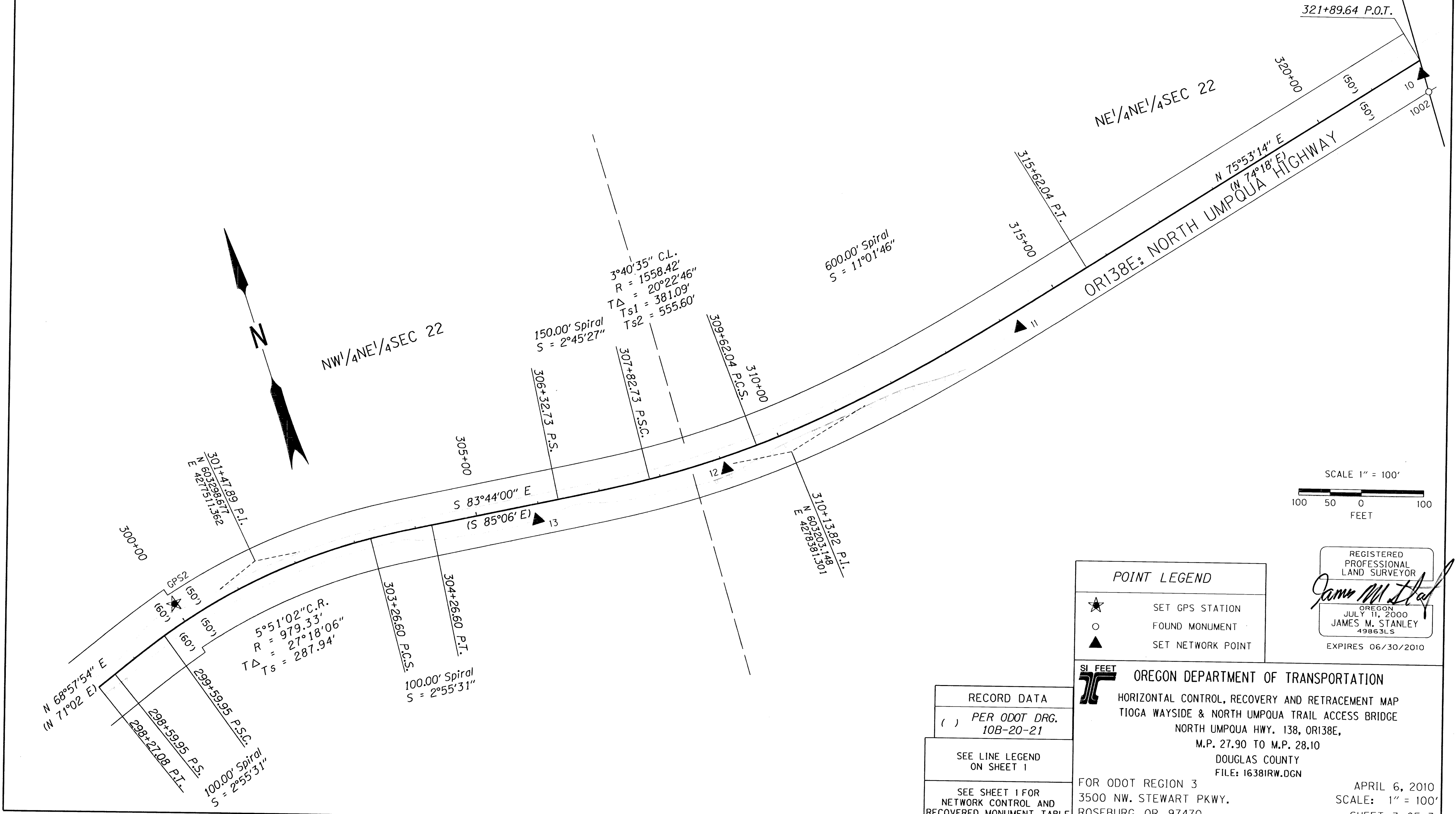


NE 1/4 SEC. 22, T. 26 S., R. 2 W., W.M.

FILED
 Date: 4/8/2010 By: JC
 This survey consists of:
 Map: ST HWY 138-012A-C
 Narrative:
 Corner Rpt:
 DOUGLAS COUNTY
 SURVEYOR



REGISTERED PROFESSIONAL LAND SURVEYOR

James M. Stanley

OREGON
 JULY 11, 2000
 JAMES M. STANLEY
 49863LS
 EXPIRES 06/30/2010

POINT LEGEND	
★	SET GPS STATION
○	FOUND MONUMENT
▲	SET NETWORK POINT

RECORD DATA
 () PER ODOT DRG.
 10B-20-21

SEE LINE LEGEND
 ON SHEET 1

SEE SHEET 1 FOR
 NETWORK CONTROL AND
 RECOVERED MONUMENT TABLE

SI FEET

OREGON DEPARTMENT OF TRANSPORTATION

HORIZONTAL CONTROL, RECOVERY AND RETRACEMENT MAP
 TIOGA WAYSIDE & NORTH UMPQUA TRAIL ACCESS BRIDGE
 NORTH UMPQUA HWY. 138, OR138E,
 M.P. 27.90 TO M.P. 28.10
 DOUGLAS COUNTY
 FILE: 16381RW.DGN

FOR ODOT REGION 3
 3500 NW. STEWART PKWY.
 ROSEBURG, OR. 97470

APRIL 6, 2010
 SCALE: 1" = 100'
 SHEET 3 OF 3

ST. HWY. 138-012 C