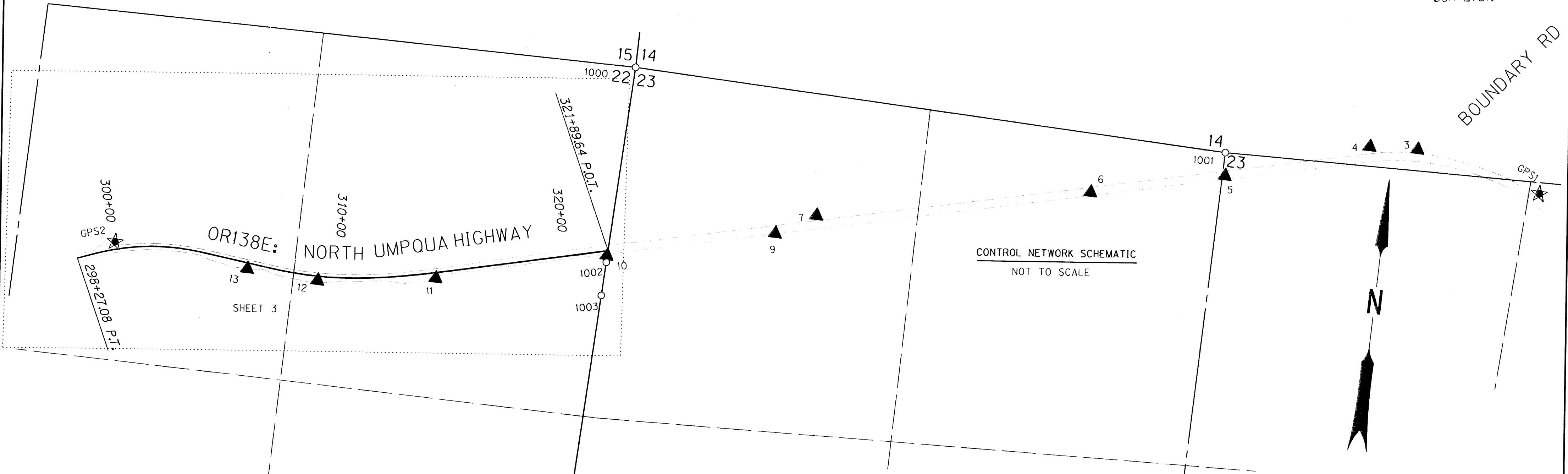


SEC. 22 & 23, T. 26 S., R. 2 W., W.M.

FILED
 Date: 4/8/2010 By: JC
 This survey consists of:
 Map: ST HWY 138-012 A-C
 Narrative:
 Corner Rpt:
 DOUGLAS COUNTY
 SURVEYOR



NETWORK OCCUPIED	OBSERVATIONS MEASURED
GPS1	3,4
3	GPS1,4,5
4	GPS1,3,5,6
5	3,4,6,7,9
6	4,5,7,9,10
7	5,6,9,10,11
9	5,6,10,11,
10	6,7,9,11,12
11	9,10,12,13
12	10,11,13,GPS2
13	11,12,GPS2
GPS2	12,13

POINT LEGEND	
★	SET GPS STATION
○	FOUND MONUMENT
▲	SET NETWORK POINT

REGISTERED PROFESSIONAL LAND SURVEYOR
James M. Stanley
 OREGON
 JULY 11, 2000
 JAMES M. STANLEY
 49863LS
 EXPIRES 06/30/2010

LINE LEGEND	
—————	ODOT RIGHT-OF-WAY
—————	SECTION LINE
—————	QUARTER SECTION LINE
—————	SIXTEENTH/GOV. LOT LINE

NETWORK CONTROL MONUMENTS LEFT OFFSET IS A -(MINUS)

PT. NO.	LDP NORTHING	LDP EASTING	STA	OFFSET	ELEV.	DATE	DESCRIPTION
GPS1	604226.277	4283570.727			925.37	6/25/09	SET 5/8" X 30" I. REBAR W/ 1 1/2" BRASS CAP STAMPED "ODOT CONTROL GPS 1" STABILIZED IN CONC. 0.1 FT. BELOW GND.
GPS2	603273.152	4277367.475	300+01.52	-32.67	892.43	6/25/09	SET 5/8" X 30" I. REBAR W/ 1 1/2" BRASS CAP STAMPED "ODOT CONTROL GPS 2" STABILIZED IN CONC. 0.1 FT. BELOW GND.
3	604354.970	4283016.502				6/25/09	SET 5/8" X 30" I. REBAR W/ 1 1/2" BRASS CAP STAMPED "ODOT CONTROL 3", 0.1 FT. BELOW GND.
4	604342.338	4282805.700				6/25/09	SET 5/8" X 30" I. REBAR W/ 1 1/2" BRASS CAP STAMPED "ODOT CONTROL 4", 0.1 FT. BELOW GND.
5	604139.466	4282188.207				6/25/09	SET 5/8" X 30" I. REBAR W/ 1 1/2" BRASS CAP STAMPED "ODOT CONTROL 5", 0.1 FT. BELOW GND.
6	603996.933	4281609.236				6/25/09	SET 5/8" X 30" I. REBAR W/ 1 1/2" BRASS CAP STAMPED "ODOT CONTROL 6", 0.1 FT. BELOW GND.
7	603753.560	4280421.760				6/25/09	SET 5/8" X 30" I. REBAR W/ 1 1/2" BRASS CAP STAMPED "ODOT CONTROL 7", 0.1 FT. BELOW GND.
9	603654.005	4280250.702			915.14	6/25/09	SET 5/8" X 30" I. REBAR W/ 1 1/2" BRASS CAP STAMPED "ODOT CONTROL 9", 0.1 FT. BELOW GND.
10	603469.252	4279525.633	321+81.12	20.95	909.57	6/25/09	SET 5/8" X 30" I. REBAR W/ 1 1/2" BRASS CAP STAMPED "ODOT CONTROL 10", 0.1 FT. BELOW GND.
11	603281.098	4278789.369	314+21.46	24.40	903.75	6/25/09	SET 5/8" X 30" I. REBAR W/ 1 1/2" BRASS CAP STAMPED "ODOT CONTROL 11", 0.1 FT. BELOW GND.
12	603208.892	4278273.696	309+04.35	19.18	901.37	6/25/09	SET 5/8" X 30" I. REBAR W/ 1 1/2" BRASS CAP STAMPED "ODOT CONTROL 12", 0.1 FT. BELOW GND.
13	603223.698	4277961.199	305+93.99	25.43	897.06	6/25/09	SET 5/8" X 30" I. REBAR W/ 1 1/2" BRASS CAP STAMPED "ODOT CONTROL 13", 0.1 FT. BELOW GND.

RECOVERED MONUMENTS LEFT OFFSET IS A -(MINUS)

PT. NO.	LDP NORTHING	LDP EASTING	STA	OFFSET	DATE	DESCRIPTION	REFERENCE
1000	604305.926	4279554.083			6/30/09	FD. 2 1/2" BRASS DISK ON 1 1/2" O.D. I. PIPE STAMPED "DOUGLAS CO. SURVEYORS OFFICE T26S R2W 15 14 22 23 2004" 0.5 FT. ABOVE GND. GOOD COND.	D.C.S.O. 2004
1001	604240.918	4282178.094			7/15/09	FD. 3 1/4" BRASS DISK ON 2 1/4" O.D. I. PIPE STAMPED "U.S. DEPT. OF THE INTERIOR BUR. OF LAND MANAGEMENT CADASTRAL SURVEY UNLAWFUL TO DISTURB 1975 T26S R2W 1/4 S14 S23" 0.5 FT. ABOVE GND. GOOD COND.	BLM 1975
1002	603439.685	4279527.175	321+75.41	50.00	7/15/09	FD. 5/8" I. REBAR W/ 1 1/4" PLASTIC CAP STAMPED "DOUG. CO. SURVEYOR" 0.1 FT. ABOVE GND. GOOD COND.	M149-74
1003	603292.939	4279522.587			7/15/09	FD. 5/8" I. REBAR W/ 1 1/4" PLASTIC CAP STAMPED "DOUG. CO. SURVEYOR" 0.1 FT. ABOVE GND. GOOD COND.	M149-74

SI FEET

 OREGON DEPARTMENT OF TRANSPORTATION
 HORIZONTAL CONTROL, RECOVERY AND RETRACEMENT MAP
 TIOGA WAYSIDE & NORTH UMPQUA TRAIL ACCESS BRIDGE
 NORTH UMPQUA HWY. 138, OR138E,
 M.P. 27.90 TO M.P. 28.10
 DOUGLAS COUNTY
 FILE: 16381RW.DGN
 FOR ODOT REGION 3
 3500 NW. STEWART PKWY.
 ROSEBURG, OR. 97470
 APRIL 6, 2010
 SHEET 1 OF 3

ST. HWY. 138-012 A