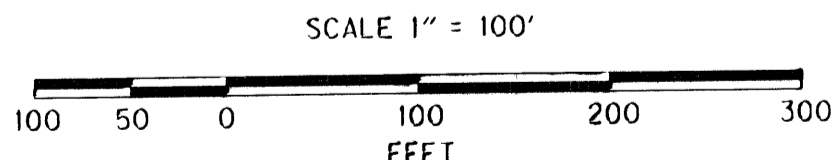
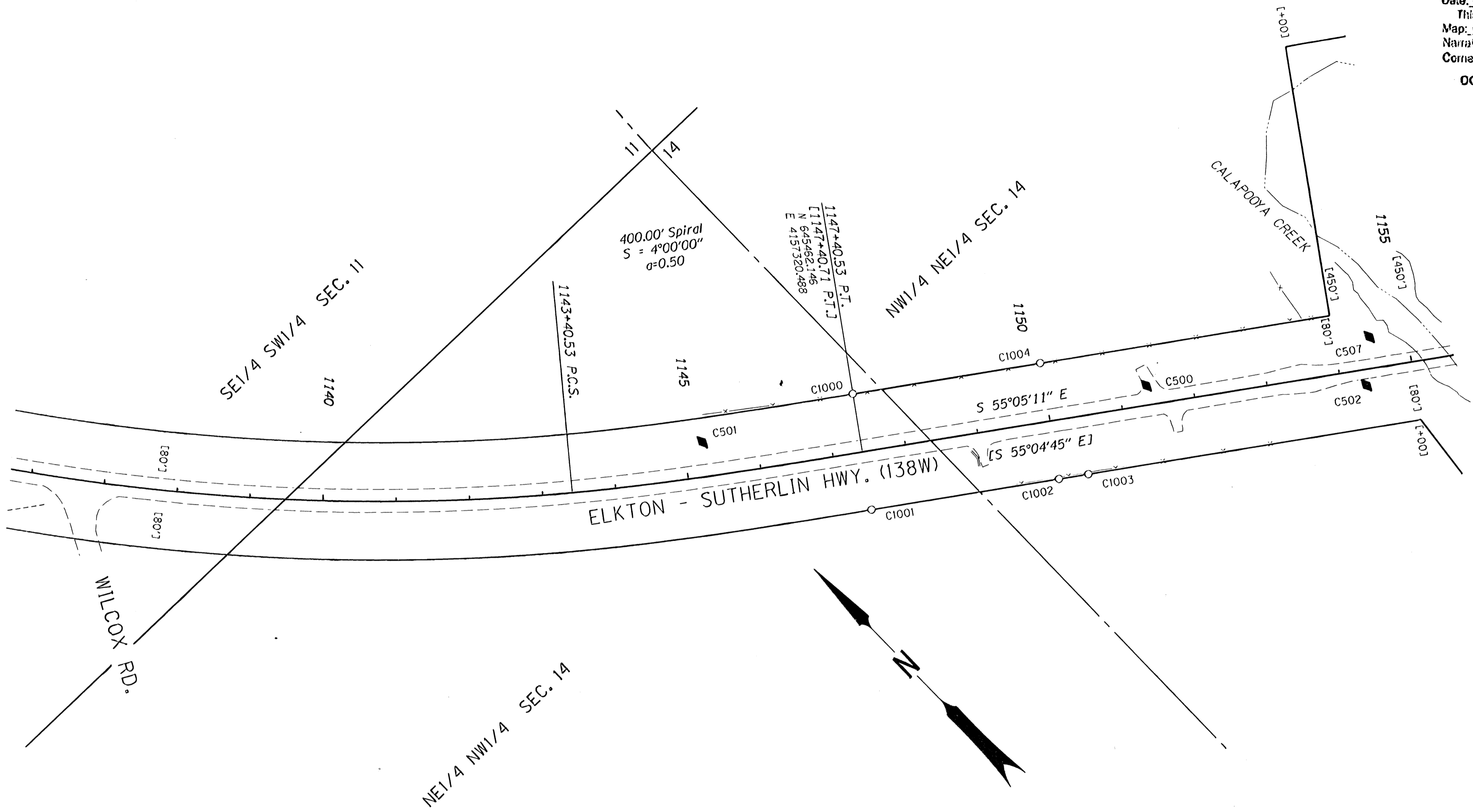


SEC. 11 AND SEC. 14, T. 25 S., R. 6 W., W.M.

FILED
 Date: 08/2009 By: JC
 This survey consists of:
 Map: ST HWY 138-010 A-L
 Narrative:
 Corner Rpt:
 DOUGLAS COUNTY
 SURVEYOR



RECOVERED MONUMENTS OFFSETS ARE SHOWN AS A - (MINUS) FOR THE LEFT SIDE OF CENTER LINE

PT. NO.	LDP NORTHING	LDP EASTING	STATION	OFFSET	ELEV.	DATE	DESCRIPTION	REFERENCE
C1000	845527.920	4157365.960	1147+40.17	-79.98		3/22/07	FD. 5/8" I. ROD FLUSH W/ SURFACE GOOD COND. PADDLE "SHRW" R/W STA. 1147+40.71 P.T. 80 LT	7B-12-4
C1001	845396.780	4157274.430	1147+40.18	79.98	390.72	3/22/07	FD. 5/8" I. ROD FLUSH W/ SURFACE GOOD COND. "SHRW PT 1147+40.71 80" R/W STA. 1147+40.71 P.T. 80 LT	7B-12-4
C1002	845248.320	4157487.060	1149+99.51	80.00	390.13	3/22/07	FD. 2 3/4" BRASS DISK SET IN A 12" X 12" CONCRETE PEDESTAL 0.3' ABOVE SURFACE STAMPED, "STATE HIGHWAY DEPARTMENT ELEVATION FEET B.M. NO." R/W STA. 1150+00 80 RT	7B-12-4
C1003	845225.020	4157520.380	1150+40.18	80.04		3/22/07	FD. 5/8" I. REBAR W/ 1 1/4" PLASTIC CAP STAMPED "D.A. EDWARDS-LS 2339" 0.30 FT. ABOVE SURFACE GOOD COND.	CS 65/41-10
C1004	845379.480	4157578.580	1149+99.49	-79.93	389.63	3/22/07	FD. 2 3/4" BRASS DISK SET IN A 12" X 12" CONCRETE PEDESTAL 0.3' ABOVE SURFACE STAMPED, "STATE HIGHWAY DEPARTMENT ELEVATION FEET B.M. NO." R/W STA. 1150+00 80 LT	7B-12-4

SEE SHEET 2 FOR CONTROL TABLE

FOR LINE LEGEND SEE SHEET 1

RECORD DATA
 () PER ODOT DRG. 6B-24-16
 [] PER ODOT DRG. 7B-12-4

POINT LEGEND

☆	FOUND GPS STATION
○	FOUND MONUMENT
◆	SET CONTROL POINT

REGISTERED PROFESSIONAL LAND SURVEYOR
James M. Stanley
 OREGON
 JULY 11, 2000
 JAMES M. STANLEY
 49863LS
 EXPIRES 06/30/2010

SI FEET
OREGON DEPARTMENT OF TRANSPORTATION
 HORIZONTAL CONTROL, RECOVERY AND RETRACEMENT MAP
 OR 138: DODGE CR. BRIDGES (#07158 & 07159)
 OR 138: CALAPOOIA CR. (ROCHESTER) BRIDGE #07338
 ELKTON- SUTHERLIN HWY(138W)
 DOUGLAS COUNTY
 FILE: 15970RW.DGN
 FOR ODOT REGION 3
 3500 NW. STEWART PKWY.
 ROSEBURG, OR. 97470
 MAY 6, 2009
 SCALE 1" = 100'
 SHEET 7 OF 12

ST. HWY. 138-010 G