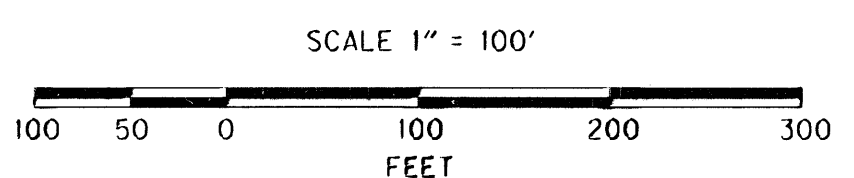
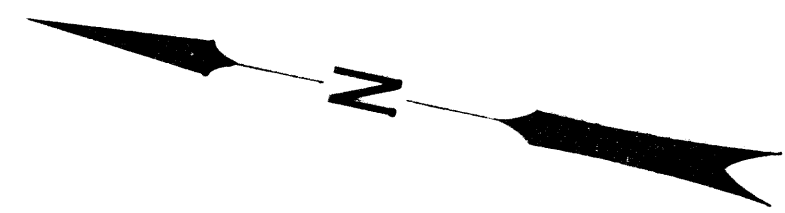
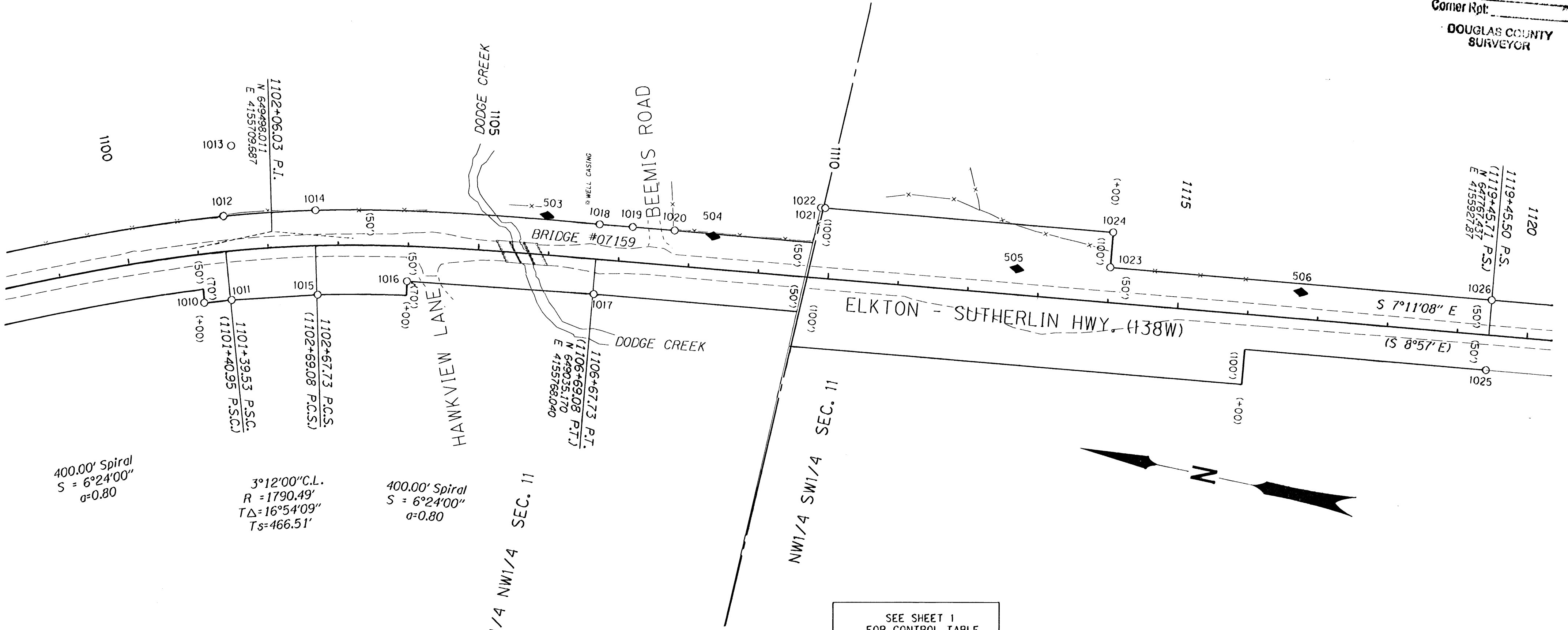


FILED
 Date: 5/8/2009 By: JC
 This survey consists of:
 Map: ST HWY 138-010 A-L
 Narrative:
 Corner Rpt:
 DOUGLAS COUNTY
 SURVEYOR



SEE SHEET 1
 FOR CONTROL TABLE

FOR LINE LEGEND SEE
 SHEET 1

RECORD DATA

() PER ODOT DRG. 6B-24-16

[] PER ODOT DRG. 7B-12-4

PT. NO.	LDP NORTHING	LDP EASTING	STATION	OFFSET	DATE	DESCRIPTION	REFERENCE
1010	849568.031	4155690.792	1101+00.17	69.34	10/28/08	FD. 5/8" I. REBAR FLUSH W/ SURFACE GOOD CONDITION STA 1101+00 70' RT.	DRWG. 6B-24-16
1011	849530.547	4155602.870	1101+41.08	69.62	10/28/08	FD. 5/8" I. REBAR 0.2' ABOVE SURFACE GOOD CONDITION WITH PADDLE "SHRW STA 1101+40.95 P.S.C. 70' RT."	DRWG. 6B-24-16
1012	849568.943	4155717.034	1101+40.97	-50.20	10/18/08	FD. 5/8" I. ROD 0.3' ABOVE SURFACE GOOD CONDITION WITH "4x4" WOOD POST AND PADDLE "SHRW STA 1101+40.95 P.S.C. 50' LT."	DRWG. 6B-24-16
1013	849577.010	4155817.190	1101+60.14	-148.81	10/28/08	FD. 5/8" I. REBAR 0.36' ABOVE SURFACE POOR CONDITION BENT SLIGHTLY TO NE.	RM2-25
1014	849440.321	4155752.482	1102+68.90	-50.30	10/28/08	FD. 5/8" I. ROD 0.5' ABOVE SURFACE GOOD CONDITION WITH PADDLE "SHRW STA 1102+69.08 P.C.S. 50' LT."	DRWG. 6B-24-16
1015	849412.223	4155835.769	1102+68.87	69.74	10/28/08	FD. 5/8" I. ROD 0.15' ABOVE SURFACE GOOD CONDITION WITH PADDLE "SHRW STA 1102+69.08 P.C.S. 70' RT."	DRWG. 6B-24-16
1016	849291.656	4155681.138	1103+99.83	49.73	10/28/08	FD. 5/8" I. ROD 0.15' ABOVE SURFACE GOOD CONDITION STA 1104+00 50' RT.	DRWG. 6B-24-16
1017	849027.832	4155718.827	1108+68.88	49.74	10/28/08	FD. 5/8" I. ROD FLUSH W/ SURFACE GOOD CONDITION WITH PADDLE "SHRW STA 1108+69.08 P.T. 50' RT."	DRWG. 6B-24-16
1018	849040.159	4155817.549	1108+68.98	-49.74	10/18/08	FD. 5/8" I. ROD 0.2' ABOVE SURFACE GOOD CONDITION WITH PADDLE "SHRW STA 1108+69.08 P.T. 50' LT."	DRWG. 6B-24-16
1019	848993.140	4155823.715	1107+18.40	-49.98	10/18/08	FD. 5/8" I. REBAR 0.15' ABOVE SURFACE GOOD CONDITION	RM2-25
1020	848933.660	4155831.334	1107+78.38	-50.10	10/18/08	FD. 5/8" I. REBAR FLUSH W/ SURFACE GOOD CONDITION	RM2-25
1021	848738.330	4155908.585	1109+81.55	-100.06	10/28/08	FD. 5/8" I. ROD 0.2' ABOVE SURFACE GOOD CONDITION WITH PADDLE 100' LT.	DRWG. 6B-24-16
1022	848730.427	4155907.282	1109+87.50	-100.03	10/28/08	FD. 5/8" I. REBAR 0.3' ABOVE SURFACE GOOD CONDITION	RM2-25
1023	848315.378	4155909.244	1113+99.53	-50.06	10/18/08	FD. 5/8" I. ROD 0.2' BELOW SURFACE GOOD CONDITION WITH PADDLE "SHRW STA 114+00 P.O.T. 50' LT."	DRWG. 6B-24-16
1024	848321.683	4155958.834	1113+99.50	-100.05	10/28/08	FD. 5/8" I. ROD 0.1' BELOW SURFACE GOOD CONDITION WITH PADDLE "SHRW STA 114+00 P.O.T. 100' LT."	DRWG. 6B-24-16
1025	847761.440	4155878.218	1119+45.24	49.996	10/28/08	FD. 5/8" I. ROD FLUSH W/ SURFACE GOOD CONDITION WITH PADDLE "SHRW STA 1119+45.71 P.S. 50' RT."	
1026	847773.943	4155977.410	1119+45.24	-49.98	10/28/08	FD. 5/8" I. ROD FLUSH W/ SURFACE GOOD CONDITION WITH PADDLE "SHRW STA 1119+45.71 P.S. 50' LT."	
1027	848753.882	4154907.709	1108+39.22	888.78	10/28/08	FD. 2 1/2" BRASS DISC ON 1 1/2" DIA. PIPE STAMPED "CO. SURVEYOR'S OFFICE T. 25S. 1/4 S. 10 S. 11 R. 6W 1998" 0.2' ABOVE SURFACE GOOD CONDITION. NOT SHOWN	

REGISTERED PROFESSIONAL LAND SURVEYOR

James M. Stanley

OREGON
 JULY 11, 2000
 JAMES M. STANLEY
 49883LS

EXPIRES 06/30/2010

SI FEET

OREGON DEPARTMENT OF TRANSPORTATION

HORIZONTAL CONTROL, RECOVERY AND RETRACEMENT MAP
 OR 138: DODGE CR. BRIDGES (#07158 & 07159)
 OR 138: CALAPOOIA CR. (ROCHESTER) BRIDGE #07338
 ELKTON- SUTHERLIN HWY(138W)
 DOUGLAS COUNTY

FOR ODOT REGION 3 FILE: 15970RW.DGN
 3500 NW. STEWART PKWY.
 ROSEBURG, OR. 97470

MAY 6, 2009
 SCALE 1" = 100'
 SHEET 5 OF 12