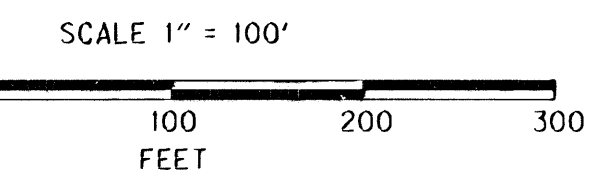
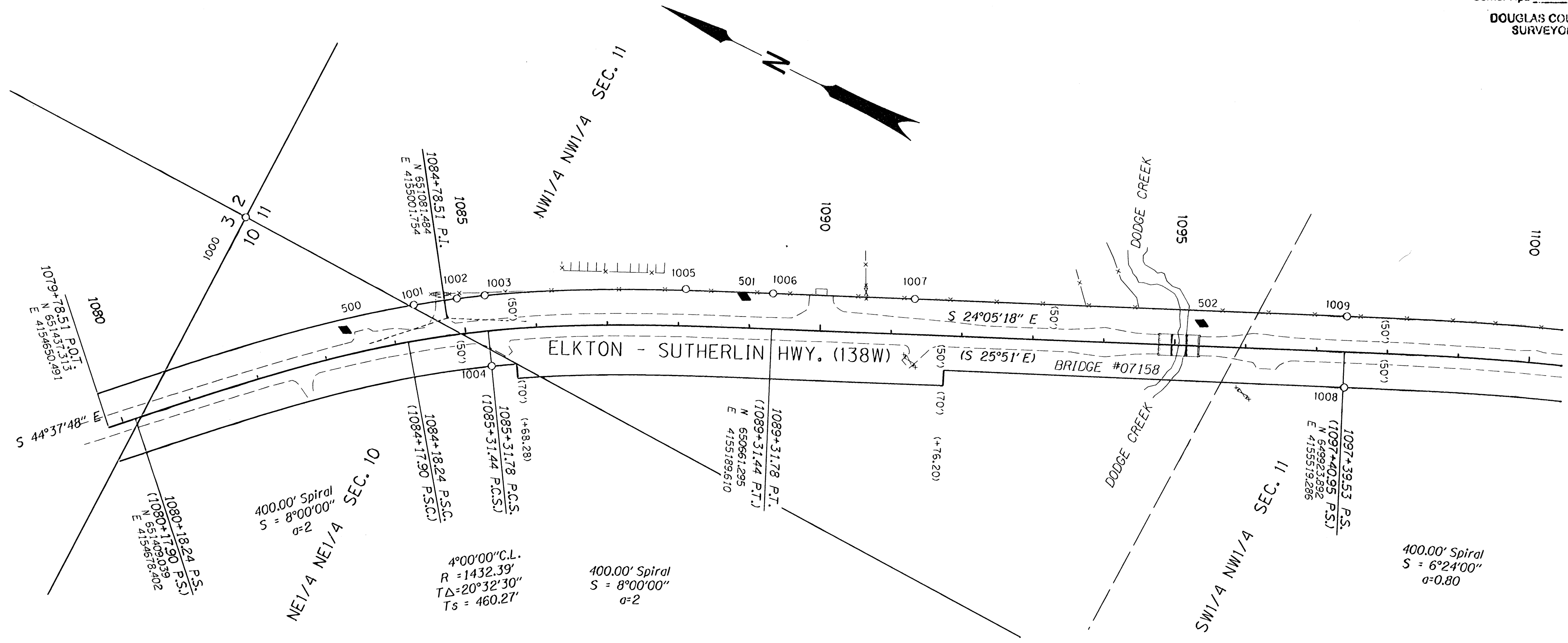


SEC. 10 AND SEC. 11, T. 25 S., R. 6 W., W.M.

FILED
 Date: 5/21/2009 By: JK
 This survey consists of:
 Map: ST HWY 138-010 A
 Narrative:
 Corner Rpt:
 DOUGLAS COUNTY
 SURVEYOR



SEE SHEET 1
FOR CONTROL TABLE

FOR LINE LEGEND SEE
SHEET 1

RECORD DATA

() PER ODOT DRG. 6B-24-16

[] PER ODOT DRG. 7B-12-4

RECOVERED MONUMENTS OFFSETS ARE SHOWN AS A - (MINUS) FOR THE LEFT SIDE OF CENTER LINE

PT. NO.	LDP NORTHING	LDP EASTING	STATION	OFFSET	ELEV.	DATE	DESCRIPTION	REFERENCE
1000	651395.085	4156000.795	1082+44.72	-223.23	498.81	10/28/08	FD. 2 1/2" BRASS DISC ON 1 1/4" DIA. PIPE STAMPED 'CO. SURVEYOR'S OFFICE T. 25S. S.3 S.2 S. 10 S. 11 R. 6W 1982' 0.9' ABOVE SURFACE GOOD CONDITION.	CS 03/12-2
1001	651128.128	4154995.688	1084+34.49	-49.98	448.11	10/28/08	FD. 5/8" I. REBAR 0.7' BELOW SURFACE GOOD CONDITION	RM2-25
1002	651077.749	4156030.768	1084+93.81	-50.02	449.08	10/28/08	FD. 5/8" I. REBAR 1.5' BELOW SURFACE GOOD CONDITION	RM2-25
1003	651044.874	4156052.194	1086+31.89	-50.09	451.23	10/28/08	FD. 5/8" I. REBAR 0.1' BELOW SURFACE GOOD CONDITION WITH PADDLE "STA. SHRW PCS 1086+31.44 50' LT.	DRWG.6B-24-18
1004	650991.599	4154987.620	1086+31.89	49.85	448.38	10/28/08	FD. 5/8" I. REBAR FLUSH W/SURFACE GOOD CONDITION WITH PADDLE "STA. SHRW PCS 1086+31.44 50' RT.	DRWG.6B-24-18
1005	650794.682	4155188.187	1088+09.30	-51.83	448.51	10/28/08	FD. 5/8" I. REBAR 0.2' ABOVE SURFACE POOR CONDITION BENT BADLY TO NE.	RM2-25
1008	650681.693	4155238.260	1089+31.79	-50.00	445.08	10/18/08	FD. 5/8" I. REBAR 0.2' ABOVE SURFACE GOOD CONDITION WITH 4x4 WOOD POST AND PADDLE "STA. SHRW PCS 1089+31.44 P.T. 50' LT	DRWG.6B-24-18
1007	650499.202	4155318.914	1091+31.72	-50.08	439.39	10/18/08	FD. 5/8" I. REBAR 0.15' ABOVE SURFACE GOOD CONDITION	RM2-25
1008	649901.998	4155474.322	1097+41.16	49.98	447.20	10/28/08	FD. 3" BRASS DISK SET IN 12x12" CONC. PEDESTAL STAMPED ' STATE HIGHWAY DEPARTMENT ELEVATION FEET BM NO." 0.5' ABOVE SURFACE GOOD CONDITION WITH PADDLE "STA 1097+40.95 50' RT.	DRWG.6B-24-18
1009	649942.849	4155668.683	1097+41.11	-49.98	435.95	10/18/08	FD. 2 1/2" BRASS DISK SET IN 12x12" CONC. PEDESTAL STAMPED ' STATE HIGHWAY DEPARTMENT ELEVATION FEET BM NO." 0.5' ABOVE SURFACE GOOD CONDITION WITH PADDLE "STA 1097+40.95 50' LT.	DRWG.6B-24-18

POINT LEGEND

- ☆ FOUND GPS STATION
- FOUND MONUMENT
- ◆ SET CONTROL POINT

REGISTERED PROFESSIONAL LAND SURVEYOR
James M. Stanley
 OREGON
 JULY 11, 2000
 JAMES M. STANLEY
 49863LS
 EXPIRES 06/30/2010

SI FEET OREGON DEPARTMENT OF TRANSPORTATION

HORIZONTAL CONTROL, RECOVERY AND RETRACEMENT MAP
 OR 138: DODGE CR. BRIDGES (*07158 & 07159)
 OR 138: CALAPOOIA CR. (ROCHESTER) BRIDGE *07338
 ELKTON- SUTHERLIN HWY(138W)
 DOUGLAS COUNTY
 FILE: 15970RW.DGN

FOR ODOT REGION 3 MAY 6, 2009
 3500 NW. STEWART PKWY. SCALE 1" = 100'
 ROSEBURG, OR. 97470 SHEET 4 OF 12

ST. HWY. 138-010 D