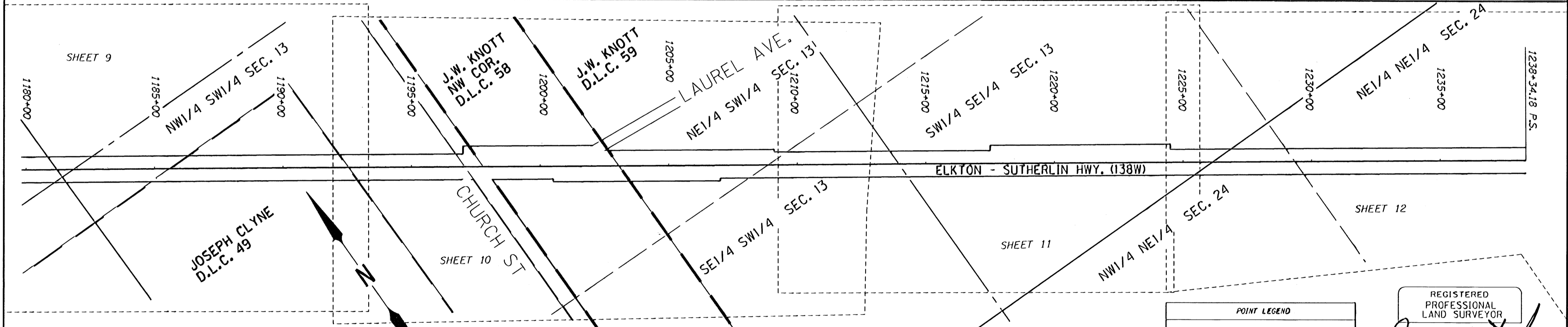
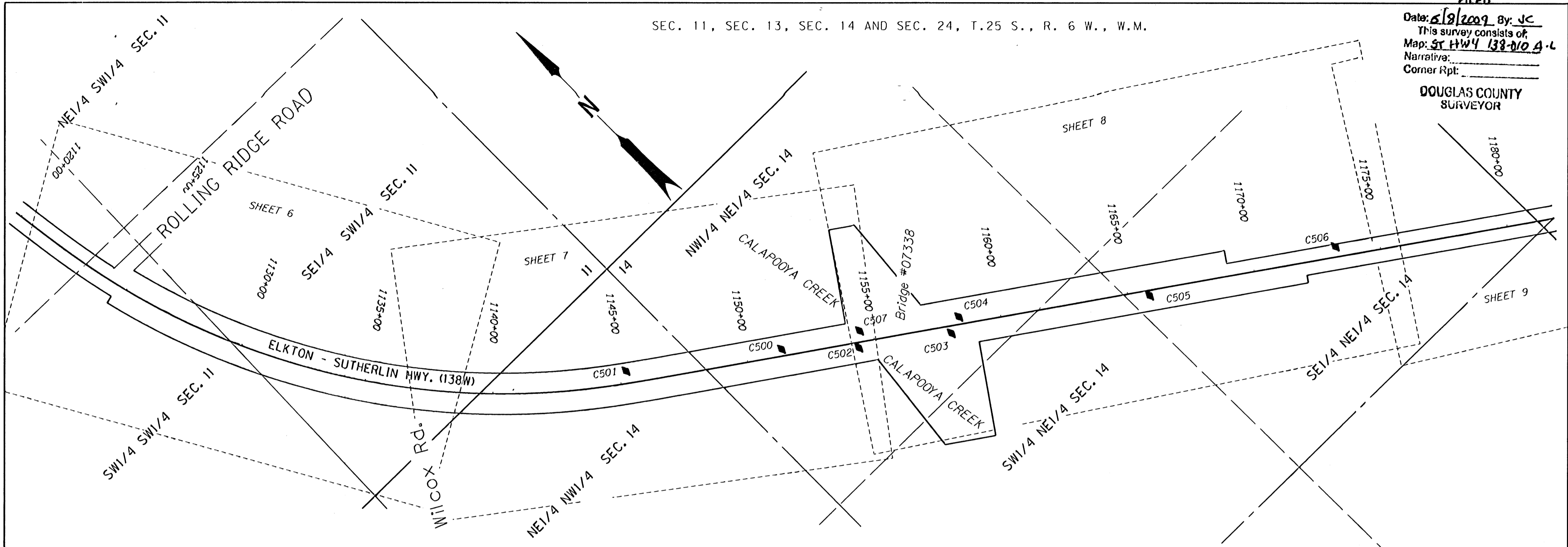


FILED

Date: 6/9/2009 By: JC  
This survey consists of:  
Map: ST HWY 138-010 A-L  
Narrative:  
Corner Rpt:

DOUGLAS COUNTY  
SURVEYOR

SEC. 11, SEC. 13, SEC. 14 AND SEC. 24, T.25 S., R. 6 W., W.M.



BASIS OF BEARING AND CONTROL NETWORK SCHEMATIC  
NOT TO SCALE

POINT LEGEND

☆	FOUND GPS STATION
○	FOUND MONUMENT
◆	SET CONTROL POINT

REGISTERED  
PROFESSIONAL  
LAND SURVEYOR  
*James M. Stand*  
OREGON  
JULY 11, 2000  
JAMES M. STANLEY  
49963LS  
EXPIRES 06/30/2010

CONTROL MONUMENTS

PT. NO.	LDP NORTHING	LDP EASTING	ELEV.	DATE	DESCRIPTION
C500	045258.500	4157680.600	393.33	3/22/2007	SET 5/8" I. REBAR WITH 1 1/2" BRASS CAP STAMPED "ODOT CONTROL C500" 0.1' BELOW SURFACE
C501	045024.270	4157172.860	392.38	3/22/2007	SET 5/8" I. REBAR WITH 1 1/2" BRASS CAP STAMPED "ODOT CONTROL C501" 0.1' BELOW SURFACE
C502	045047.030	4157876.420	396.11	3/22/2007	SET 5/8" I. REBAR WITH 1 1/2" BRASS CAP STAMPED "ODOT CONTROL C502" 0.1' BELOW SURFACE
C503	044832.080	4158170.660	394.78	3/22/2007	SET 5/8" I. REBAR WITH 1 1/2" BRASS CAP STAMPED "ODOT CONTROL C503" 0.1' BELOW SURFACE
C504	044868.970	4158238.100	394.67	3/22/2007	SET 5/8" I. REBAR WITH 1 1/2" BRASS CAP STAMPED "ODOT CONTROL C504" 0.1' BELOW SURFACE
C505	044390.200	4158818.380	393.83	3/22/2007	SET 5/8" I. REBAR WITH 1 1/2" BRASS CAP STAMPED "ODOT CONTROL C505" 0.1' BELOW SURFACE
C506	044013.860	4159483.920	393.49	3/22/2007	SET 5/8" I. REBAR WITH 1 1/2" BRASS CAP STAMPED "ODOT CONTROL C506" 0.1' BELOW SURFACE
C507	045091.780	4157925.180	387.68	3/22/2007	SET 5/8" I. REBAR WITH 1 1/2" BRASS CAP STAMPED "ODOT CONTROL C507" 0.1' BELOW SURFACE

SI FEET  
OREGON DEPARTMENT OF TRANSPORTATION  
HORIZONTAL CONTROL, RECOVERY AND RETRACEMENT MAP  
OR 138: DODGE CR, BRIDGES (#07158 & 07159)  
OR 138: CALAPOOIA CR. (ROCHESTER) BRIDGE #07338  
ELKTON-SUTHERLIN HWY.(138W)  
DOUGLAS COUNTY  
FILE: 15970RW.DGN  
MAY 6, 2009  
FOR ODOT REGION 3  
3500 NW. STEWART PKWY.  
ROSEBURG, OR. 97470  
SHEET 2 OF 12

ST. HWY. 138-010 B