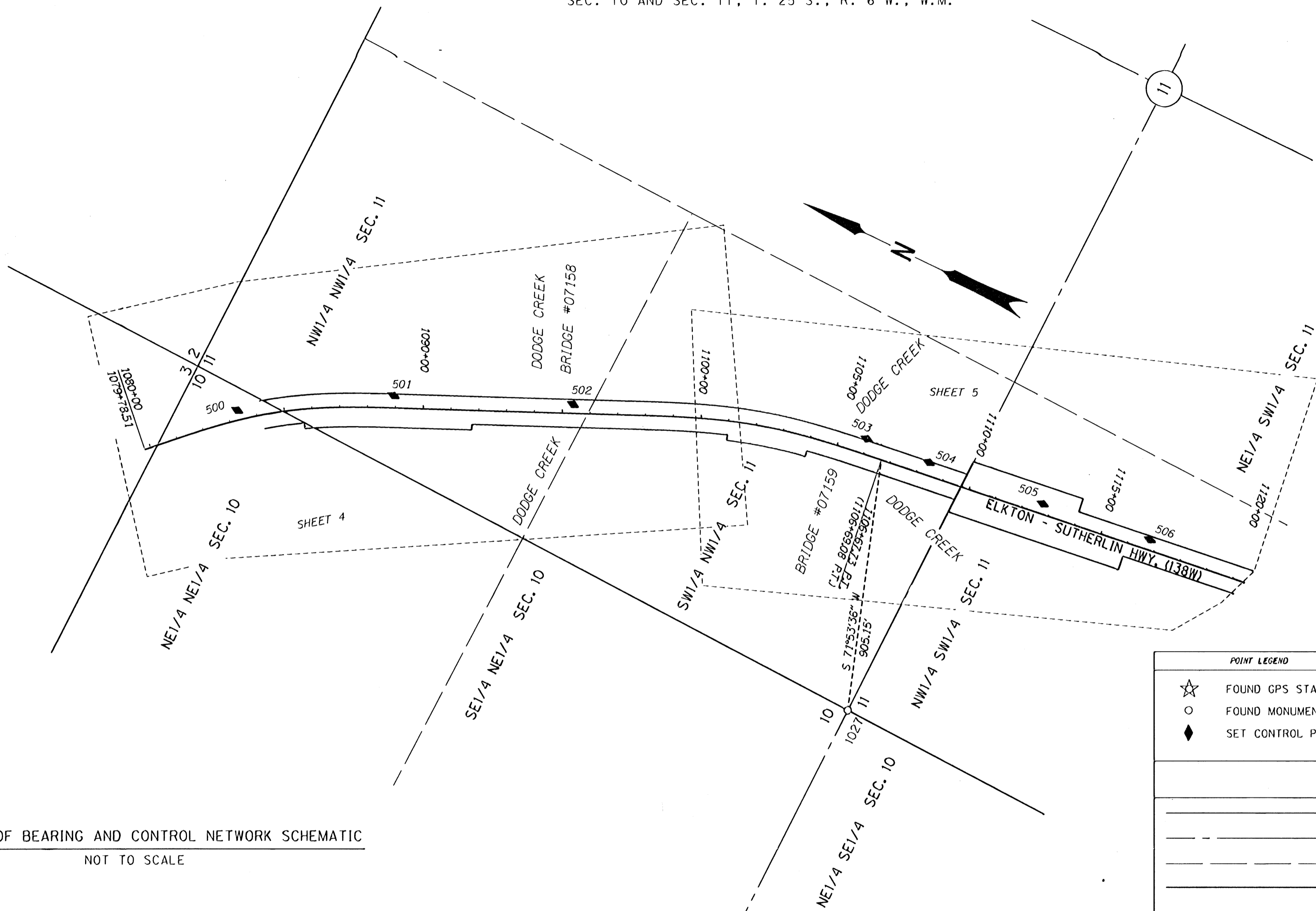


SEC. 10 AND SEC. 11, T. 25 S., R. 6 W., W.M.

FILED
 Date: 5/2/2009 By: JC
 This survey consists of:
 Map: ST HWY 138-010 A-L
 Narrative:
 Corner Rpt:
 DOUGLAS COUNTY
 SURVEYOR



BASIS OF BEARING AND CONTROL NETWORK SCHEMATIC
 NOT TO SCALE

POINT LEGEND

☆	FOUND GPS STATION
○	FOUND MONUMENT
◆	SET CONTROL POINT

REGISTERED
 PROFESSIONAL
 LAND SURVEYOR
James M. Stanley
 OREGON
 JULY 11, 2000
 JAMES M. STANLEY
 49863LS
 EXPIRES 06/30/2010

LINE LEGEND

—	SECTION
- - -	QUARTER SECTION
— · — · —	SIXTEENTH/GOV. LOT
— · — · — · — · —	ODOT RIGHT-OF-WAY
— · — · — · — · — · —	STREET RIGHT-OF-WAY
— · — · — · — · — · — · —	THIS SIDE ONLY D.L.C.
— · — · — · — · — · — · — · —	BOTH SIDES D.L.C.

CONTROL MONUMENTS

PT. NO.	LDP NORTHING	LDP EASTING	ELEV.	DATE	DESCRIPTION
500	861199.738	4154920.827	465.96	10/18/08	SET 5/8" I. REBAR WITH 1 1/2" BRASS CAP STAMPED "ODOT CONTROL 500" IN CONC. FLUSH W/SURFACE
501	850718.875	4155212.988	445.78	10/18/08	SET 5/8" I. REBAR WITH 1 1/2" BRASS CAP STAMPED "ODOT CONTROL 501" 0.1' BELOW SURFACE
502	850122.251	4155468.694	435.60	10/18/08	SET 5/8" I. REBAR WITH 1 1/2" BRASS CAP STAMPED "ODOT CONTROL 502" 0.1' BELOW SURFACE
503	849118.528	4155814.030	423.36	10/18/08	SET 5/8" I. REBAR WITH 1 1/2" BRASS CAP STAMPED "ODOT CONTROL 503" 0.1' BELOW SURFACE
504	848879.024	4155835.104	424.41	10/18/08	SET 5/8" I. REBAR WITH 1 1/2" BRASS CAP STAMPED "ODOT CONTROL 504" 0.1' BELOW SURFACE
505	848445.872	4155879.810	435.82	10/18/08	SET 1" BRASS PLUG IN ROCK OUTCROP STAMPED "ODOT CONTROL 505"
506	848043.277	4155931.401	420.87	10/18/08	SET 5/8" I. REBAR WITH 1 1/2" BRASS CAP STAMPED "ODOT CONTROL 506" IN CONC. FLUSH W/SURFACE
LEE	852215.883	4172798.279		10/18/08	FD. 3 3/4" BRASS DISK SET FLUSH IN A 8" DIA. CONCRETE PEDESTAL STAMPED "CONTROL MARK LEE" NOT SHOWN

SI FEET

 OREGON DEPARTMENT OF TRANSPORTATION
 HORIZONTAL CONTROL, RECOVERY AND RETRACEMENT MAP
 OR 138: DODGE CR. BRIDGES (#07158 & 07159)
 OR 138: CALAPOOIA CR. (ROCHESTER) BRIDGE #07338
 ELKTON- SUTHERLIN HWY(138W)
 DOUGLAS COUNTY
 FILE: 15970RW.DGN
 FOR ODOT REGION 3
 3500 NW. STEWART PKWY.
 ROSEBURG, OR. 97470
 MAY 6, 2009
 SHEET 1 OF 12

ST. HWY. 138-010 A