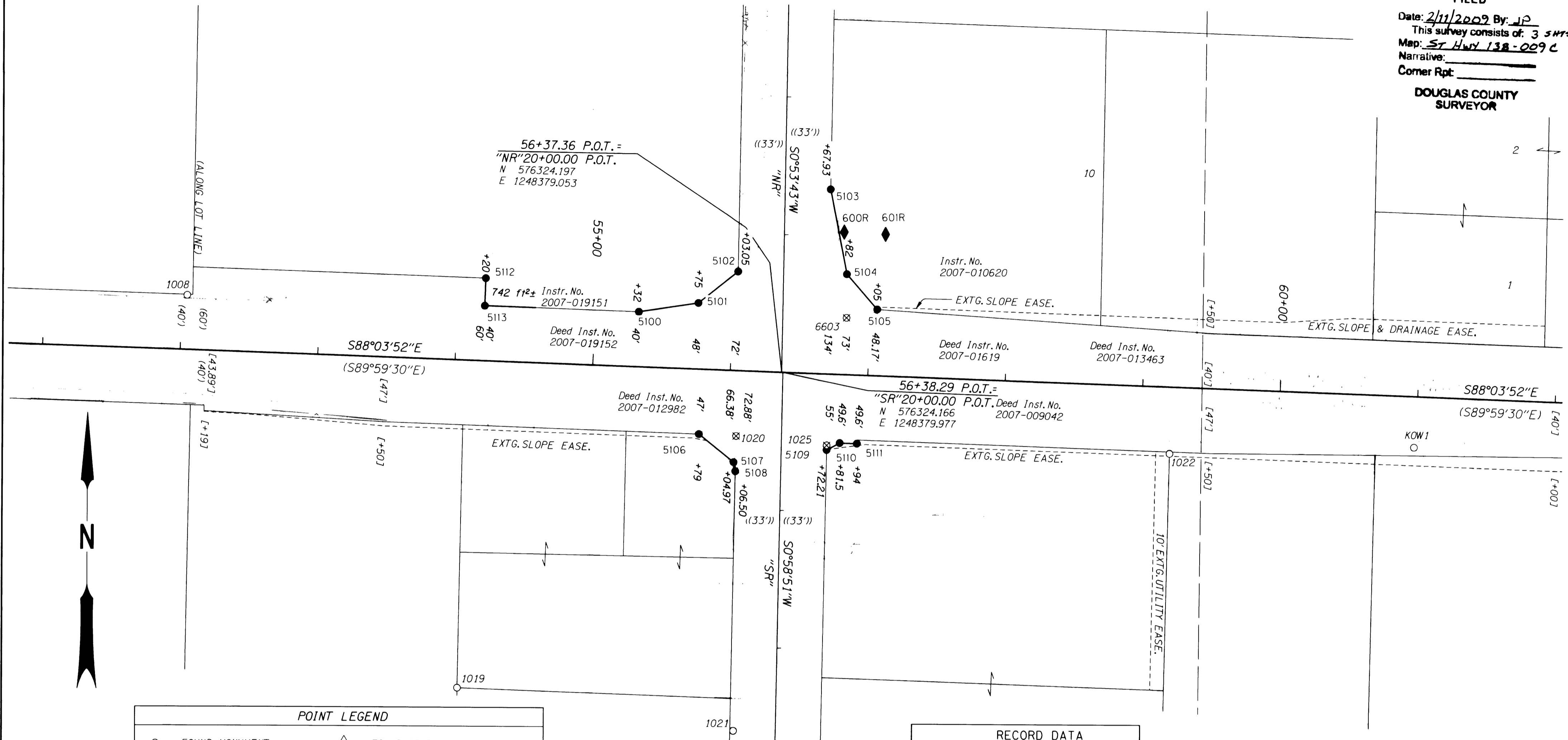


FILED
 Date: 2/11/2009 By: JP
 This survey consists of: 3 sheets.
 Map: ST HWY 138-009C
 Narrative:
 Corner Rpt:
 DOUGLAS COUNTY
 SURVEYOR

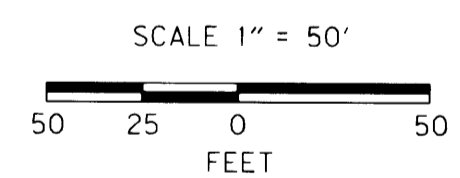


POINT LEGEND

○	FOUND MONUMENT	△	FOUND ODOT NETWORK POINT
●	SET MONUMENT	⊗	DESTROYED NETWORK POINT
⊗	DESTROYED MONUMENT	◆	SET STRATEGIC POINT

RECORD DATA

()	PER ODOT DRG.5B-13-22
(())	PER PLAT OF FIRST ADDITION OF BROOKSIDE TO ROSEBURG
[]	PER COUNTY ROAD PLAN



RECOVERED MONUMENT TABLE ON SHEET 2
 SEE LINE LEGEND ON SHEET 2

REGISTERED PROFESSIONAL LAND SURVEYOR
James M. Stanley
 JULY 11, 2000
 JAMES M. STANLEY
 49863LS
 EXPIRES 06/30/2010

RIGHT OF WAY MONUMENTS OFFSETS ARE SHOWN AS A - (MINUS) FOR THE LEFT SIDE OF CENTER LINE

PT. NO.	LDP NORTHING	LDP EASTING	STATION	OFFSET	DATE	DESCRIPTION
5100	576367.733	1248275.102	55+32.00	-40.00	10/14/2008	SET 5/8" X 30" IRON REBAR WITH 2" DIA. ALUM. CAP STAMPED "ODOT RIGHT OF WAY 5100" 0.1 FT. BELOW SURFACE
5101	576374.276	1248318.347	55+75.00	-48.00	10/14/2008	SET 5/8" X 21" IRON REBAR WITH 2" DIA. ALUM. CAP STAMPED "ODOT RIGHT OF WAY 5101" FLUSH WITH A.C.
5102	576397.315	1248347.192	56+03.05	-72.00	10/14/2008	SET 5/8" X 30" IRON REBAR WITH 2" DIA. ALUM. CAP STAMPED "ODOT RIGHT OF WAY 5102" 0.05 FT. BELOW SURFACE
5103	576457.088	1248414.129	56+67.93	-134.00	10/14/2008	SET 5/8" X 30" IRON REBAR WITH 2" DIA. ALUM. CAP STAMPED "ODOT RIGHT OF WAY 5103" 0.3 FT. BELOW SURFACE
5104	576395.648	1248426.131	56+82.00	-73.00	10/14/2008	SET 5/8" X 30" IRON REBAR WITH 2" DIA. ALUM. CAP STAMPED "ODOT RIGHT OF WAY 5104" FLUSH WITH A.C.
5105	576370.055	1248448.279	57+05.00	-48.17	10/14/2008	SET 5/8" X 30" IRON REBAR WITH 2" DIA. ALUM. CAP STAMPED "ODOT RIGHT OF WAY 5105" FLUSH WITH A.C.
5106	576279.195	1248319.137	55+79.00	47.00	10/14/2008	SET 5/8" X 30" IRON REBAR WITH 2" DIA. ALUM. CAP STAMPED "ODOT RIGHT OF WAY 5106" 0.1 FT. BELOW SURFACE
5107	576258.949	1248344.437	56+04.97	66.38	10/14/2008	SET 5/8" X 30" IRON REBAR WITH 2" DIA. ALUM. CAP STAMPED "ODOT RIGHT OF WAY 5107" 0.05 FT. BELOW SURFACE
5108	576252.401	1248345.747	56+06.50	72.88	10/14/2008	SET 5/8" X 30" IRON REBAR WITH 2" DIA. ALUM. CAP STAMPED "ODOT RIGHT OF WAY 5108" 0.3 FT. BELOW SURFACE
5109	576268.052	1248412.023	56+72.21	55.00	10/14/2008	SET 5/8" X 30" IRON REBAR WITH 2" DIA. ALUM. CAP STAMPED "ODOT RIGHT OF WAY 5109" FLUSH WITH A.C.
5110	576273.135	1248421.490	56+81.50	49.60	10/14/2008	SET 5/8" X 30" IRON REBAR WITH 2" DIA. ALUM. CAP STAMPED "ODOT RIGHT OF WAY 5110" 0.1 FT. BELOW SURFACE
5111	576272.713	1248433.983	56+94.00	49.60	10/14/2008	SET 5/8" X 30" IRON REBAR WITH 2" DIA. ALUM. CAP STAMPED "ODOT RIGHT OF WAY 5111" 0.05 FT. BELOW SURFACE
5012	576391.500	1248163.840	54+20.00	-60.00	2/4/2009	SET 5/8" X 30" IRON REBAR WITH 2" DIA. ALUM. CAP STAMPED "ODOT RIGHT OF WAY 5112" 0.05 FT. BELOW SURFACE
5013	576371.520	1248163.170	54+20.00	-40.00	2/4/2009	SET 5/8" X 30" IRON REBAR WITH 2" DIA. ALUM. CAP STAMPED "ODOT RIGHT OF WAY 5113" 0.05 FT. BELOW SURFACE

OREGON DEPARTMENT OF TRANSPORTATION
 RIGHT-OF-WAY BOUNDARY MONUMENTATION MAP
 OR138E @ RIFLE RANGE ROAD (ROSEBURG)
 NORTH UMPQUA HIGHWAY
 DOUGLAS COUNTY
 FILE: 14473rw.dgn

FOR ODOT REGION 3 FEBRUARY 10, 2009
 3500 NW STEWART PKWY. SCALE: 1" = 50'
 ROSEBURG, OR. 97470 SHEET 3 OF 3