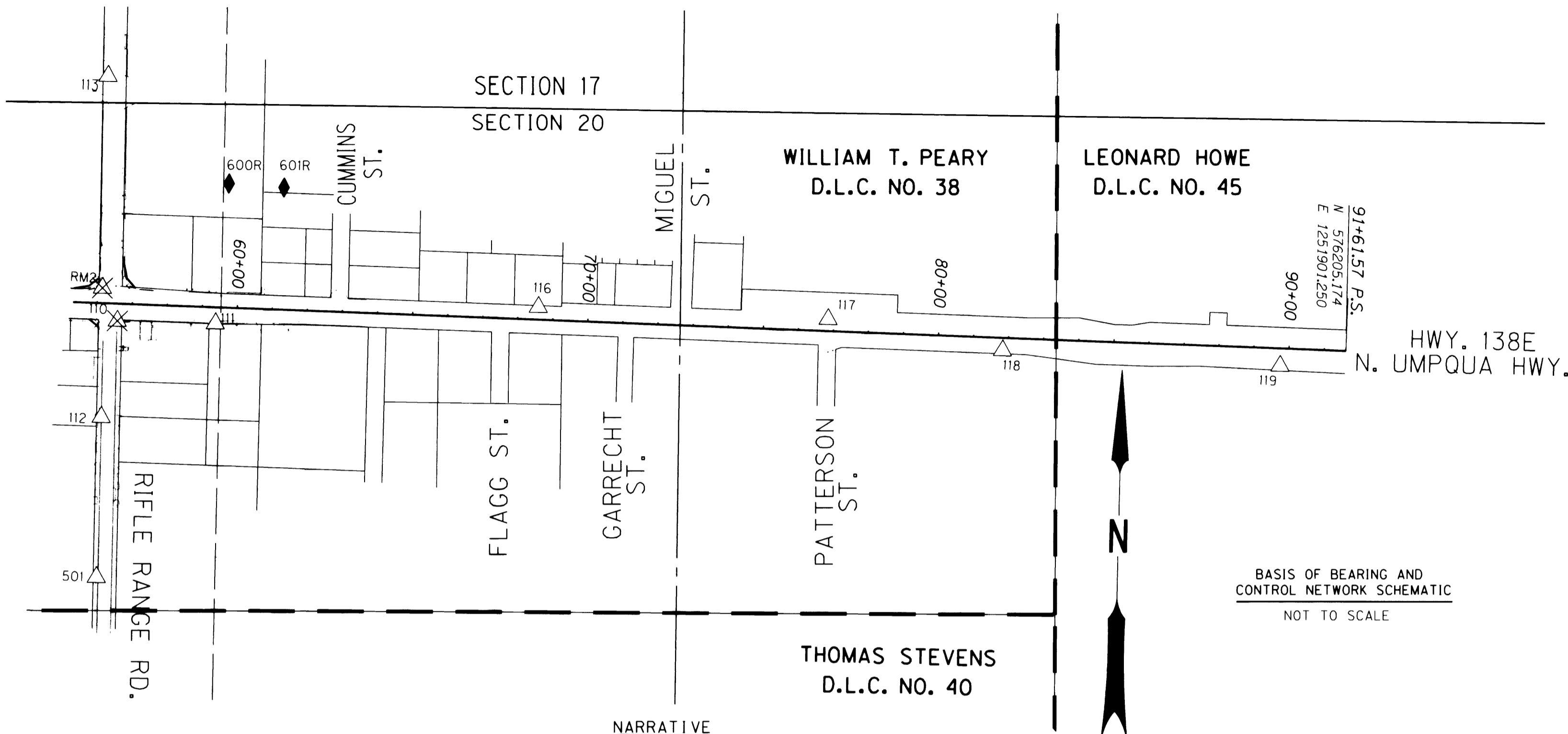


FILED  
 Date: 2/11/2009 By: J.P.  
 This survey consists of: 3 sheets  
 Map: ST HWY 138-009 B  
 Narrative: \_\_\_\_\_  
 Corner Rpt: \_\_\_\_\_  
 DOUGLAS COUNTY  
 SURVEYOR



**BOUNDARY LINE LEGEND**

	EXISTING HIGHWAY RIGHT OF WAY
	EXISTING STREET RIGHT OF WAY
	EXISTING EASEMENT
	EXISTING PROPERTY
	DONATION LAND CLAIM (RIGHT SIDE)
	DONATION LAND CLAIM (BOTH SIDES)
	SECTION
	1/4 SECTION
	1/16 SECTION OR GOVERNMENT LOT
	NEW HIGHWAY RIGHT OF WAY

BASIS OF BEARING AND CONTROL NETWORK SCHEMATIC  
 NOT TO SCALE

**NARRATIVE**

**PURPOSE:**  
 THE PURPOSE OF THIS SURVEY WAS TO MONUMENT THE ODOT RIGHT OF WAY ACQUIRED FOR THE ODOT CONSTRUCTION PROJECT NAMED "ORE. 138 @ RIFLE RANGE ROAD (ROSEBURG)". THIS SURVEY IS LOCATED AT THE INTERSECTION OF OREGON HIGHWAY 138E AND RIFLE RANGE ROAD IN DOUGLAS COUNTY WITHIN THE ROSEBURG CITY LIMITS. THE LDP COORDINATES, BASIS OF BEARING, CONTROL NETWORK ACCURACIES, AND RESOLVED ALIGNMENTS ARE TAKEN FROM THE ODOT SURVEY "ST. HWY 138-008" FILED WITH THE DOUGLAS COUNTY SURVEYOR DATED OCTOBER 3, 2006. THIS SURVEY UTILIZES A LOCAL DATUM PLANE (LDP) WHICH IS RELATIVE TO THE OREGON COORDINATE SYSTEM (OCS) NAD 1927 SOUTH ZONE, WITH RESPECT TO THE LOCAL LATITUDE AND GROUND ELEVATION. THE LDP COORDINATES DEFINE TRUE GROUND DISTANCES. THIS SURVEY IS IN U.S. SURVEY FEET. TO CONVERT TO OCS SOUTH ZONE COORDINATES, MULTIPLY THE LDP COORDINATES BY 0.99987353. THE FIELD NOTES FOR THIS SURVEY ARE ARCHIVED IN SALEM AT THE ODOT MAP AND PLAN CENTER IN FIELD BOOK 4314.

**MONUMENTATION:**  
 THE RIGHT OF WAY MONUMENTS WERE SET BY THE ROSEBURG SURVEY CREW ON OCTOBER 14, 2008 IN ACCORDANCE WITH THE ODOT DRAWING 10B-22-27.

A LEICA TCPR 1201 TOTAL STATION (EQUIPMENT # 07-TS06) WAS USED TO MAKE NETWORK OBSERVATIONS AND SET THE RIGHT OF WAY MONUMENTS. THIS INSTRUMENT HAS THE FOLLOWING ACCURACY STANDARDS: ANGULAR ERROR +/- 1 SECOND AND DISTANCE STANDARD OF +/- 2 MM, +/- 2 PPM.

A DILIGENT SEARCH WAS MADE TO LOCATE ALL PREVIOUSLY SET NETWORK CONTROL POINTS. DURING THE SEARCH FOR THE ORIGINAL CONTROL POINTS IT WAS FOUND THAT SEVERAL HAD BEEN MOVED OR DESTROYED. HOWEVER A NUMBER OF UNDISTURBED NETWORK CONTROL POINTS FROM ODOT SURVEY "ST. HWY 138-008" WERE FOUND AND WERE SUFFICIENT TO PERPETUATE THE NEW RIGHT OF WAY IN ACCORDANCE WITH OREGON REVISED STATUTE (ORS) CHAPTER 209, SECTION 155, SUBSECTION 2 (b). NO ADJUSTMENT TO THE ORIGINAL NETWORK CONTROL WAS REQUIRED AND THE DESTROYED MONUMENTS ARE NOTED IN THE LISTING OF THE RECOVERED MONUMENT TABLE. THE RIGHT OF WAY MONUMENTS SET WERE NUMBERED 5000-TO 5011 AND WERE SET BY THE FOLLOWING METHOD USING EXISTING CONTROL NETWORK POINTS:

TWO RANDOM POINTS WERE SET WITH A MAG NAIL AND NAMED 600R AND 601R. THE GEOGRAPHIC LOCATION OF THESE POINTS WAS DETERMINED BY USING THE "RESECTION PROGRAM" OF THE LIECA TCPR 1201. THIS WAS ACCOMPLISHED BY SETTING ON THE POINTS 600R AND 601R, AND BACKSIGHTING 3 PREVIOUSLY SET NETWORK CONTROL POINTS 111, 112, AND 113. BY SIGHTING THESE THREE POINTS AND RECORDING THEIR ORIGINAL POSITION, THE INSTRUMENT CALCULATED AND ASSIGNED A POSITION TO POINTS 600R AND 601R.

FROM THESE TWO POINTS ALL OF THE RIGHT OF WAY POINTS WERE SET USING 5/8" REBAR WITH A 2" ALUMINUM CAP STAMPED "ODOT RIGHT OF WAY AND THE POINT NUMBER". ALL MONUMENTS WERE SET FLUSH WITH GROUND OR JUST BELOW IT AS NOTED ON THE TABLES.

NO ELEVATIONS WERE ESTABLISHED FOR THESE SET POINTS.

**POINT LEGEND**

○	FOUND MONUMENT	△	FOUND ODOT NETWORK POINT
●	SET MONUMENT	⊗	DESTROYED NETWORK POINT
⊗	DESTROYED MONUMENT	◆	SET STRATEGIC POINT

NETWORK POINTS TABLE ON SHEET 1

REGISTERED PROFESSIONAL LAND SURVEYOR  
 JUL 11, 2000  
 JAMES M. STANLEY  
 49863LS  
 EXPIRES 06/30/2010

RECOVERED MONUMENTS OFFSETS ARE SHOWN AS A - (MINUS) FOR THE LEFT SIDE OF CENTER LINE

PT. NO.	LDP NORTHING	LDP EASTING	STATION	OFFSET	DATE	DESCRIPTION	REFERENCE
1008	576378.376	1247946.939	52+03.67	-39.55	8/16/05	FD. 5/8" I. REBAR W/ 1 1/4" PLASTIC CAP STAMPED "I.E. ENG." 0.5' ABOVE SURFACE GOOD CONDITION. WITNESS COR.	M 129-9
1019	576094.461	1248144.240			8/16/05	FD. 1 1/4" PLASTIC CAP STAMPED "BAUGHMAN TECH SERV" FLUSH WITH A.C. GOOD CONDITION	94-41
1020	576277.939	1248346.232	56+06.12	47.34	8/16/05	DESTROYED 5/8" I. REBAR W/ 1 1/4" PLASTIC CAP LAYING BESIDE IT STAMPED "BAUGHMAN TECH SERV." FLUSH W/ SURFACE GOOD CONDITION	58/281-1
			"SR"20+46.80	32.95			
1021	576064.204	1248344.969	"SR"22+60.52	30.55	8/16/05	FD. 5/8" I. REBAR 0.3' BELOW SURFACE GOOD CONDITION. NO SURVEY FOUND ASSUMED PROPERTY CORNER	NOT RECORDED
1022	576266.343	1248661.150	59+21.25	48.29	8/16/05	FD. 5/8" I. REBAR 0.1' ABOVE SURFACE AT EDGE OF A.C. GOOD CONDITION.	M 12-74
1025	576271.444	1248412.027	"SR"20+52.17	-32.95	8/16/05	DESTROYED 5/8" I. REBAR 0.3' BELOW A.C. SURFACE GOOD CONDITION.	M 68-60
6603	576363.902	1248425.998	56+82.94	-41.27	8/16/05	DESTROYED 1 3/8" BRASS DISK STAMPED "66-3" IN CONC. CURB IN CRACK FAIR CONDITION GROUT GIVING AWAY	CS 66/57
DLC38	576445.219	1242799.753			8/11/05	FD. 1 3/8" AXLE SHAFT AT GROUND ELEV. 1" AT TOP 0.6' ABOVE SURFACE GOOD CONDITION T27S R5W NORTHERLY SW EXTERNAL "L" DLC 38	CS 64/63-15
SW38	575450.640	1243583.326			8/11/05	FD. 1" I.D. IRON PIPE FLUSH W/ SURFACE AT BASE OF CONC. CURB T27S R5W SOUTHERLY SW EXTERNAL "L" DLC 38	CS 66/34-31
KOW1	576271.821	1248838.878	60+98.69	36.82	8/16/05	FD. 2 7/8" BRASS DISK STAMPED "DOUGLAS CO. SURVEYORS OFFICE KOW 1979" SET IN CONC. SIDEWALK GOOD CONDITION.	CS 66/57

**OREGON DEPARTMENT OF TRANSPORTATION**  
 RIGHT-OF-WAY BOUNDARY MONUMENTATION MAP  
 OR138E @ RIFLE RANGE ROAD (ROSEBURG)  
 NORTH UMPQUA HIGHWAY  
 DOUGLAS COUNTY  
 FILE: 14473rw.dgn  
 FOR ODOT REGION 3  
 3500 NW. STEWART PKWY.  
 ROSEBURG, OR. 97470  
 FEBRUARY 10, 2009  
 SHEET 2 OF 3