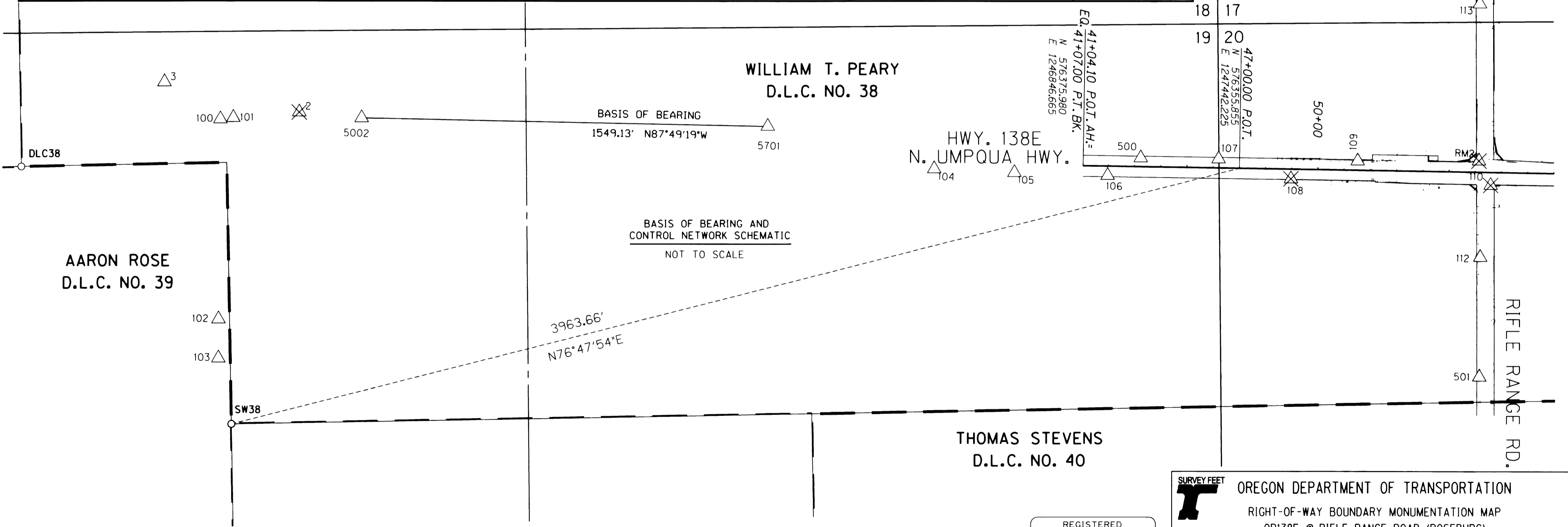
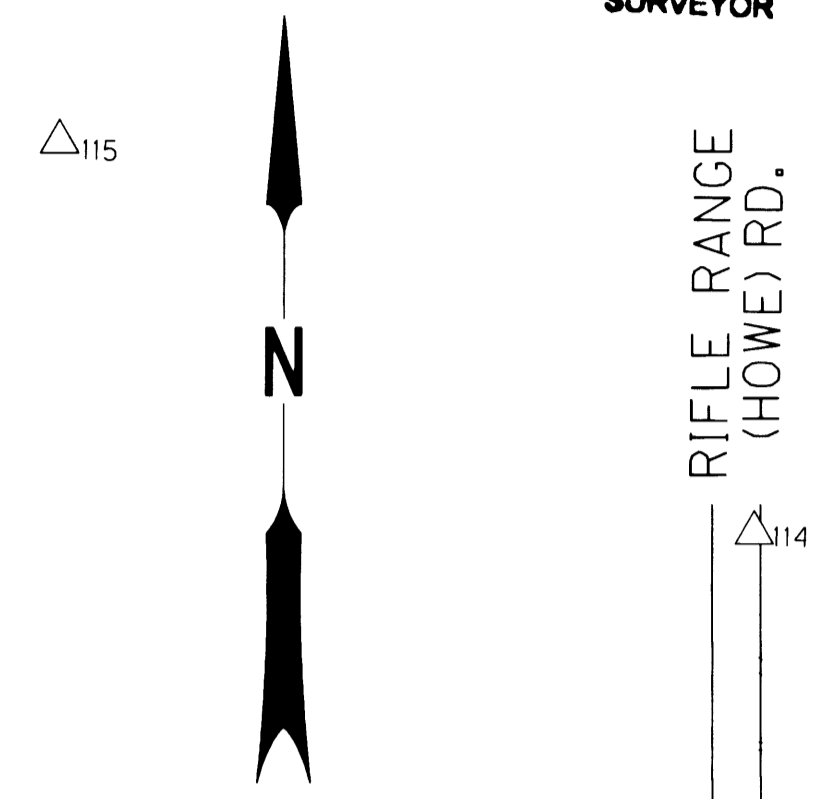


FILED
 Date: 2/11/2009 By: JP
 This survey consists of: 3 SHTS.
 Map: ST HWY 138-009 A
 Narrative:
 Corner Rpt:

DOUGLAS COUNTY SURVEYOR

NETWORK POINTS OFFSETS ARE SHOWN AS A - (MINUS) FOR THE LEFT SIDE OF CENTER LINE

PT. NO.	LDP NORTHING	LDP EASTING	ELEV.	STATION	OFFSET	DATE	DESCRIPTION	REFERENCE DOCUMENT
2	576631.307	1243862.876				08/17/05	DESTROYED 1" BRASS PLUG IN CONC. SIDEWALK STAMPED "ODOT CONTROL 2"	ST. HWY. 139-006
3	576755.497	1243350.601				08/17/05	FD. 1" BRASS PLUG IN CONC. SIDEWALK STAMPED "ODOT CONTROL 3"	ST. HWY. 139-006
100	576610.660	1243561.998				08/11/05	FD. 1" BRASS PLUG IN CONC. SIDEWALK STAMPED "ODOT CONTROL 100"	ST. HWY. 138-008
101	576615.002	1243611.504				08/11/05	FD. 1" BRASS PLUG IN CONC. SIDEWALK STAMPED "ODOT CONTROL 101"	ST. HWY. 138-008
102	575850.733	1243540.797				08/11/05	FD. 1" BRASS PLUG IN CONC. SIDEWALK STAMPED "ODOT CONTROL 102"	ST. HWY. 138-008
103	575701.777	1243537.790				08/11/05	FD. 1" BRASS PLUG IN CONC. SIDEWALK STAMPED "ODOT CONTROL 103"	ST. HWY. 138-008
104	576373.844	1246279.503				08/15/05	FD. 1" BRASS PLUG IN CONC. SIDEWALK STAMPED "ODOT CONTROL 104"	ST. HWY. 138-008
105	576354.177	1246584.593				08/15/05	FD. 1" BRASS PLUG IN CONC. SIDEWALK STAMPED "ODOT CONTROL 105"	ST. HWY. 138-008
106	576337.024	1246939.599		41+98.30	35.80	08/15/05	FD. 1" BRASS PLUG IN CONC. SIDEWALK STAMPED "ODOT CONTROL 106"	ST. HWY. 138-008
107	576392.236	1247363.603		46+20.19	-33.71	08/15/05	FD. 1" BRASS PLUG IN CONC. SIDEWALK STAMPED "ODOT CONTROL 107"	ST. HWY. 138-008
108	576311.946	1247638.743		48+97.89	37.25	08/15/05	DESTROYED 1" BRASS PLUG IN CONC. SIDEWALK STAMPED "ODOT CONTROL 108"	ST. HWY. 138-008
109	576375.644	1247894.062	475.68	51+50.91	-35.04	08/15/05	FD. 1" BRASS PLUG IN CONC. SIDEWALK STAMPED "ODOT CONTROL 109"	ST. HWY. 138-008
110	576274.690	1248399.313	480.87	56+59.28	48.80	08/16/05	DESTROYED 1" BRASS PLUG IN CONC. SIDEWALK STAMPED "ODOT CONTROL 110"	ST. HWY. 138-008
111	576270.684	1248679.021	486.32	59+38.97	43.35	08/16/05	FD. 1" BRASS PLUG IN CONC. SIDEWALK STAMPED "ODOT CONTROL 111"	ST. HWY. 138-008
112	576001.067	1248354.801	476.33	"SR"23+23.48	19.64	08/17/05	FD. 1" BRASS PLUG IN CONC. GUTTER STAMPED "ODOT CONTROL 112"	ST. HWY. 138-008
113	576965.872	1248370.374	489.35	"NR"13+58.54	18.70	08/17/05	FD. 5/8" x 30" I. REBAR W/ 1 1/2" BRASS CAP STAMPED "ODOT CONTROL 113"	ST. HWY. 138-008
114	577632.003	1248423.712		"NR"6+91.66	-24.22	08/17/05	FD. 1" BRASS PLUG IN CONC. CURB STAMPED "ODOT CONTROL 114"	ST. HWY. 138-008
115	578181.958	1247484.127				08/17/05	FD. WOOD HUB AND TACK	ST. HWY. 138-008
116	576318.655	1249599.467		68+57.27	-35.68	08/17/05	FD. 1" BRASS PLUG IN CONC. SIDEWALK STAMPED "ODOT CONTROL 116"	ST. HWY. 138-008
117	576289.085	1250425.192		76+83.52	-34.01	08/17/05	FD. 1" BRASS PLUG IN CONC. SIDEWALK STAMPED "ODOT CONTROL 117"	ST. HWY. 138-008
118	576202.345	1250923.076		81+84.05	35.86	08/17/05	FD. 1" BRASS PLUG IN CONC. SIDEWALK STAMPED "ODOT CONTROL 118"	ST. HWY. 138-008
119	576161.423	1251714.223		89+76.13	50.04	08/17/05	FD. 1" BRASS PLUG IN CONC. CURB STAMPED "ODOT CONTROL 119"	ST. HWY. 138-008
500	576401.481	1247066.692		43+23.14	-32.92	08/11/05	FD. 1" BRASS PLUG IN CONC. SIDEWALK STAMPED "ODOT CONTROL 500"	ST. HWY. 138-008
501	575545.855	1248342.882	470.90	"SR"27+78.83	23.77	09/15/05	FD. 1" BRASS PLUG IN CONC. SIDEWALK STAMPED "ODOT CONTROL 501"	ST. HWY. 138-008
5002	576605.523	1244099.651				08/11/05	FD. 2 1/2" BRASS DISK IN CONC. APPROACH UNABLE TO READ STAMPING 50-2 TAKEN FROM RECORD	CS 66/57
5701	576546.646	1245647.657				08/11/05	FD. 2 3/4" DIA BRASS DISK STAMPED "CITY OF ROSEBURG 57-1"	CS 66/57
600R	576426.207	1248424.073				04/10/08	SET MAG NAIL FLUSH IN A.C.	
601R	576424.655	1248454.100				04/10/08	SET MAG NAIL FLUSH IN A.C.	
RM2	576367.972	1248356.513	481.11			08/16/05	DESTROYED 2 3/4" DIA BRASS DISK STAMPED "DOUGLAS CO. SURVEYORS OFFICE KOW RM2 1979"	CS 66/57



POINT LEGEND

○ FOUND MONUMENT	△ FOUND ODOT NETWORK POINT
● SET MONUMENT	⊗ DESTROYED NETWORK POINT
⊗ DESTROYED MONUMENT	◆ SET STRATEGIC POINT

SEE LINE LEGEND ON SHEET 2

REGISTERED PROFESSIONAL LAND SURVEYOR
James M. Stanley
 OREGON
 JULY 11, 2000
 JAMES M. STANLEY
 49863LS
 EXPIRES 06/30/2010

SURVEY FEET OREGON DEPARTMENT OF TRANSPORTATION
 RIGHT-OF-WAY BOUNDARY MONUMENTATION MAP
 OR138E @ RIFLE RANGE ROAD (ROSEBURG)
 NORTH UMPQUA HIGHWAY
 DOUGLAS COUNTY
 FILE: 14473rw.dgn
 FOR ODOT REGION 3
 3500 NW. STEWART PKWY.
 ROSEBURG, OR. 97470
 FEBRUARY 10, 2009
 SHEET 1 OF 3