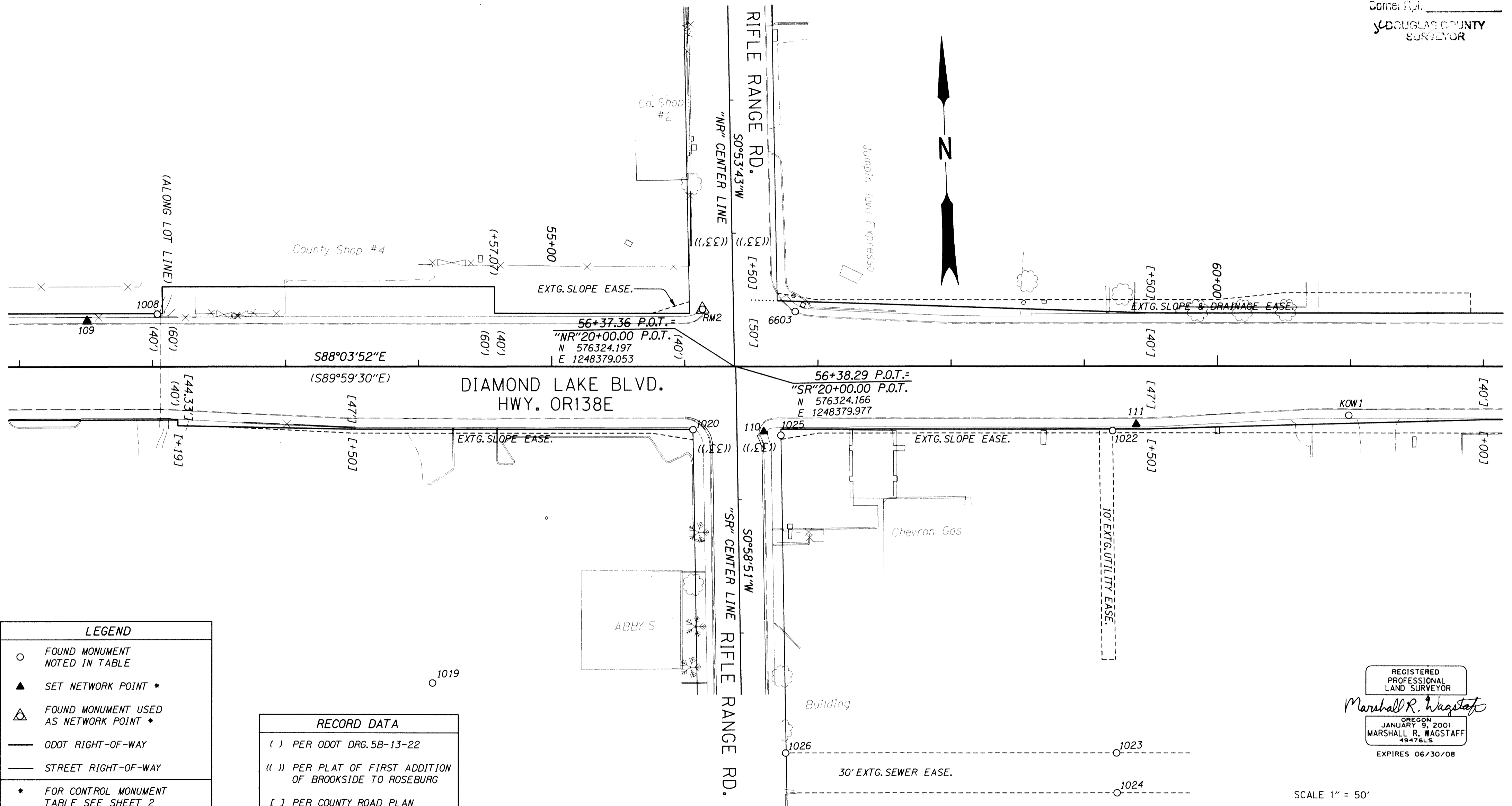


FILED  
Date: 10-3-2006 By: JC  
This survey consists of:  
Map: ST HWY 138-008 A-H  
Corner: ETL  
DOUGLAS COUNTY  
SURVEYOR

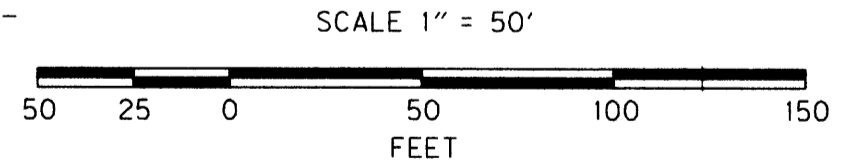
NW 1/4 SEC. 20, T. 27 S., R. 5 W., W.M.



LEGEND	
○	FOUND MONUMENT NOTED IN TABLE
▲	SET NETWORK POINT *
△	FOUND MONUMENT USED AS NETWORK POINT *
—	ODOT RIGHT-OF-WAY
—	STREET RIGHT-OF-WAY
*	FOR CONTROL MONUMENT TABLE SEE SHEET 2

RECORD DATA	
( )	PER ODOT DRG. 5B-13-22
(( ))	PER PLAT OF FIRST ADDITION OF BROOKSIDE TO ROSEBURG
[ ]	PER COUNTY ROAD PLAN

REGISTERED PROFESSIONAL LAND SURVEYOR  
*Marshall R. Wagstaff*  
OREGON JANUARY 31, 2001  
MARSHALL R. WAGSTAFF  
49476LS  
EXPIRES 06/30/08



RECOVERED MONUMENT LIST

PT. NO.	LDP NORTHING	LDP EASTING	ELEV.	STATION	OFFSET (- IS LT.)	DATE	DESCRIPTION	REFERENCE DOCUMENT
1008	576378.376	1247946.939		52+03.67	-39.55	8/16/05	FD. 5/8" I. REBAR W/ 1 1/4" PLASTIC CAP STAMPED "I.E.ENG." 0.5' ABOVE SURFACE GOOD CONDITION. WITNESS COR.	M 129-9
1019	576094.461	1248144.240				8/16/05	FD. 1 1/4" PLASTIC CAP STAMPED "BAUGHMAN TECH SERV" FLUSH WITH A.C. GOOD CONDITION	94-41
1020	576277.939	1248346.232		56+06.12 "SR"20+46.80	47.34 32.95	8/16/05	FD. 5/8" I. REBAR W/ 1 1/4" PLASTIC CAP LAYING BESIDE IT STAMPED "BAUGHMAN TECH SERV." FLUSH W/ SURFACE GOOD CONDITION	58/281-1
1022	576266.343	1248661.150		59+21.25	48.29	8/16/05	FD. 5/8" I. REBAR 0.1' ABOVE SURFACE AT EDGE OF A.C. GOOD CONDITION.	M 12-74
1023	576024.682	1248656.023				8/16/05	FD. 5/8" I. REBAR 0.4' BELOW A.C. SURFACE GOOD CONDITION	M 68-60
1024	575994.720	1248655.402				8/16/05	FD. 5/8" I. ROD 0.3' BELOW SURFACE AT EDGE OF A.C. GOOD CONDITION	M 78-25
1025	576271.444	1248412.027		"SR"20+52.17	-32.95	8/16/05	FD. 5/8" I. REBAR 0.3' BELOW A.C. SURFACE GOOD CONDITION.	M 68-60
6603	576363.902	1248425.998		56+82.94	-41.27	8/16/05	FD. 1 3/8" BRASS DISK STAMPED "68-3" IN CONC. CURB IN CRACK FAIR CONDITON GROUT GIVING AWAY	CS 66/57
KOW1	576271.821	1248838.878	489.13	60+98.69	36.82	8/16/05	FD. 2 7/8" BRASS DISK STAMPED "DOUGLAS CO. SURVEYORS OFFICE KOW 1979" SET IN CONC. SIDEWALK GOOD CONDITION.	CS 66/57

**OREGON DEPARTMENT OF TRANSPORTATION**  
HORIZONTAL CONTROL, RECOVERY AND RETRACEMENT MAP  
OR138 @ RIFLE RANGE ROAD (ROSEBURG)  
NORTH UMPQUA HWY.  
DOUGLAS COUNTY  
KEY NO. 14473

FOR ODOT REGION 3  
3500 NW. STEWART PKWY.  
ROSEBURG, OR. 97470

OCTOBER 3, 2006  
SCALE: 1" = 50'  
SHEET 4 OF 8