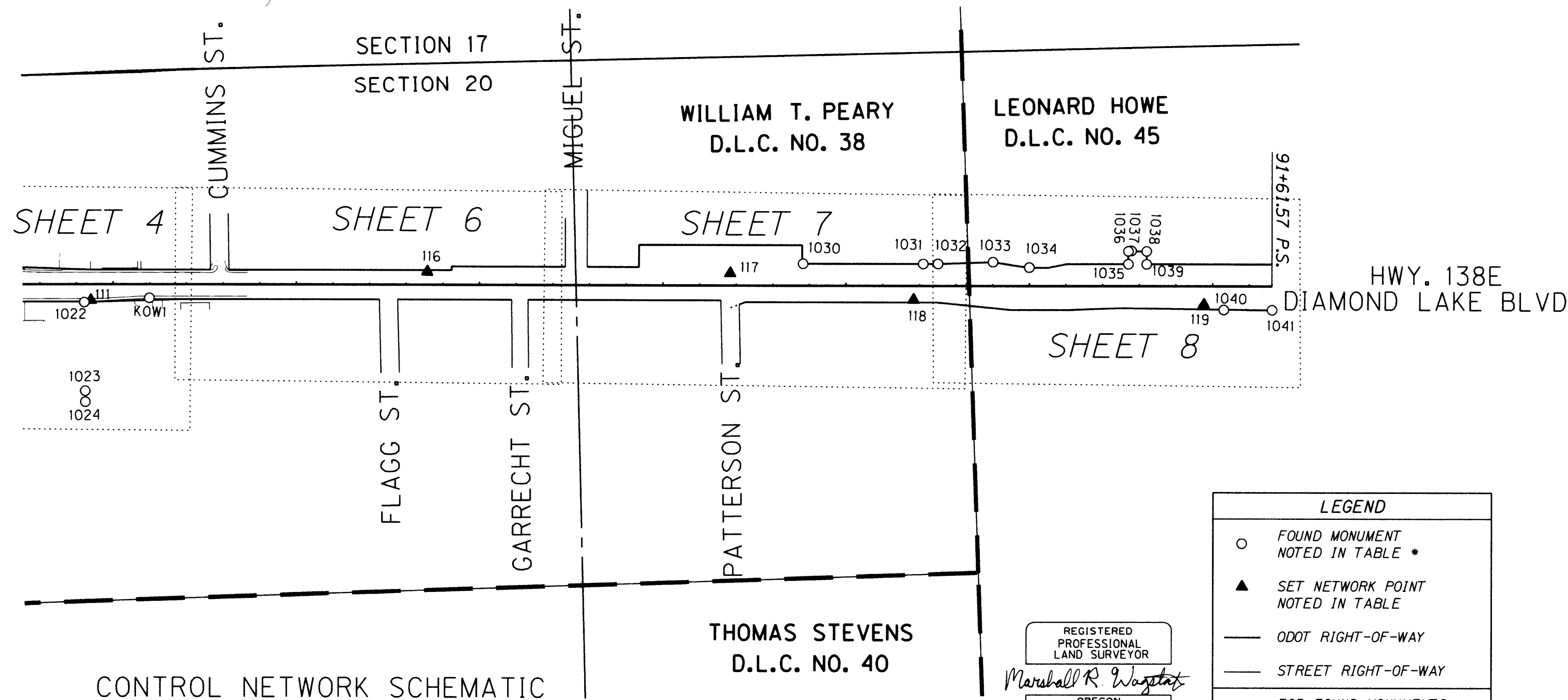


FILED

Date: 10-3-2006 By: JC
This survey consists of:
Map: ST HWY 138-008 A-H
Narrative:
Corner Ppt:
J. DOUGLAS COUNTY SURVEYOR

SEC. 20, T. 27 S., R. 5 W., W.M.



CONTROL NETWORK SCHEMATIC
NOT TO SCALE

CONFIDENCE LEVEL LIMITS

POINT ID	SEMI MAJOR	SEMI MINOR	ORIENTATION*
2	0.000	0.000	
3	0.000	0.000	
100	0.009	0.008	5.8
101	0.008	0.008	68.3
102	0.036	0.011	-79.6
103	0.043	0.011	-81.1
104	0.022	0.009	15.3
105	0.032	0.009	11.3
106	0.045	0.011	8.8
107	0.060	0.011	4.5
108	0.070	0.012	6.4
109	0.080	0.013	3.9
110	0.099	0.014	5.5
111	0.110	0.015	5
112	0.099	0.017	11.8
113	0.099	0.017	-10.2
114	0.108	0.017	-23.4
115	0.090	0.016	-45.3
116	0.014	0.007	-2.9
117	0.024	0.007	-0.5
118	0.032	0.009	2.2
119	0.045	0.010	2.5
5002	0.000	0.000	
5701	0.000	0.000	
RM2	0.097	0.014	3.4

* NORTH AZIMUTH

FIXED POINTS FROM SURVEY ST. HWY. 138-006 NOT SUBJECT TO LEAST SQUARES ADJUSTMENT OR CONFIDENCE LEVEL ANALYSIS: 2, 3, 5002 & 5701.

LEGEND

- FOUND MONUMENT NOTED IN TABLE *
- ▲ SET NETWORK POINT NOTED IN TABLE
- ODOT RIGHT-OF-WAY
- STREET RIGHT-OF-WAY

* FOR FOUND MONUMENTS NOT SHOWN ON INDIVIDUAL SHEETS SEE TABLE BELOW

REGISTERED PROFESSIONAL LAND SURVEYOR
MARSHALL R. WAGSTAFF
JANUARY 9, 2001
49476LS
EXPIRES 06/30/08

RECOVERED MONUMENT LIST

PT. NO.	LDP NORTHING	LDP EASTING	STATION	OFFSET (- IS LT.)	DATE	DESCRIPTION	REFERENCE DOCUMENT
1006	577626.664	1248138.525			8/16/05	FD. 3/4" I. ROD 0.4' BELOW SURFACE SETS INSIDE 4" I.D. PIPE 0.4' ABOVE SURFACE GOOD CONDITION	M 11-7
1007	577252.945	1247963.932			8/16/05	FD. 1" I.D. IRON PIPE 0.1' ABOVE SURFACE, GOOD CONDITON	M 11-7
DLC38	576445.219	1242799.753			8/11/05	FD. 1 3/8" AXLE SHAFT AT GROUND ELEV. 1" AT TOP 0.6' ABOVE SURFACE GOOD CONDITION T27S R5W NORTHERLY SW EXTERNAL "L" DLC 38	CS 64/63-15
SW38	575450.640	1243583.326			8/11/05	FD. 1" I.D. IRON PIPE FLUSH W/ SURFACE AT BASE OF CONC. CURB T27S R5W SOUTHERLY SW EXTERNAL "L" DLC 38	CS 66/34-31

CONTROL MONUMENT LIST

PT. NO.	LDP NORTHING	LDP EASTING	ELEV.	STATION	OFFSET (- IS LT.)	DATE	DESCRIPTION	REFERENCE DOCUMENT
2	576631.307	1243862.876				08/17/05	FD. 1" BRASS PLUG IN CONC. SIDEWALK STAMPED "ODOT CONTROL 2"	ST. HWY. 139-006
3	576755.497	1243350.601				08/17/05	FD. 1" BRASS PLUG IN CONC. SIDEWALK STAMPED "ODOT CONTROL 3"	ST. HWY. 139-006
100	576610.660	1243561.998				08/11/05	SET 1" BRASS PLUG IN CONC. SIDEWALK STAMPED "ODOT CONTROL 100"	
101	576615.002	1243611.504				08/11/05	SET 1" BRASS PLUG IN CONC. SIDEWALK STAMPED "ODOT CONTROL 101"	
102	575850.733	1243540.797				08/11/05	SET 1" BRASS PLUG IN CONC. SIDEWALK STAMPED "ODOT CONTROL 102"	
103	575701.777	1243537.790				08/11/05	SET 1" BRASS PLUG IN CONC. SIDEWALK STAMPED "ODOT CONTROL 103"	
104	576373.844	1246279.503				08/15/05	SET 1" BRASS PLUG IN CONC. SIDEWALK STAMPED "ODOT CONTROL 104"	
105	576354.177	1246584.593				08/15/05	SET 1" BRASS PLUG IN CONC. SIDEWALK STAMPED "ODOT CONTROL 105"	
106	576337.024	1246939.599		41+98.30	35.80	08/15/05	SET 1" BRASS PLUG IN CONC. SIDEWALK STAMPED "ODOT CONTROL 106"	
107	576392.236	1247363.603		46+20.19	-33.71	08/15/05	SET 1" BRASS PLUG IN CONC. SIDEWALK STAMPED "ODOT CONTROL 107"	
108	576311.946	1247638.743		48+97.89	37.25	08/15/05	SET 1" BRASS PLUG IN CONC. SIDEWALK STAMPED "ODOT CONTROL 108"	
109	576375.644	1247894.062	475.68	51+50.91	-35.04	08/15/05	SET 1" BRASS PLUG IN CONC. SIDEWALK STAMPED "ODOT CONTROL 109"	
110	576274.690	1248399.313	480.87	56+59.28	48.80	08/16/05	SET 1" BRASS PLUG IN CONC. SIDEWALK STAMPED "ODOT CONTROL 110"	
111	576270.684	1248679.021	486.32	59+38.97	43.35	08/16/05	SET 1" BRASS PLUG IN CONC. SIDEWALK STAMPED "ODOT CONTROL 111"	
112	576001.067	1248354.801	476.33	"SR"23+23.48	19.64	08/17/05	SET 1" BRASS PLUG IN CONC. GUTTER STAMPED "ODOT CONTROL 112"	
113	576965.872	1248370.374	489.35	"NR"13+58.54	18.70	08/17/05	SET 5/8" x 30" I. REBAR W/ 1 1/2" BRASS CAP STAMPED "ODOT CONTROL 113"	
114	577632.003	1248423.712		"NR"6+91.66	-24.22	08/17/05	SET 1" BRASS PLUG IN CONC. CURB STAMPED "ODOT CONTROL 114"	
115	578181.958	1247484.127				08/17/05	SET WOOD HUB AND TACK	
116	576318.655	1249599.467		68+57.27	-35.68	08/17/05	SET 1" BRASS PLUG IN CONC. SIDEWALK STAMPED "ODOT CONTROL 116"	
117	576289.085	1250425.192		76+83.52	-34.01	08/17/05	SET 1" BRASS PLUG IN CONC. SIDEWALK STAMPED "ODOT CONTROL 117"	
118	576202.345	1250923.076		81+84.05	35.86	08/17/05	SET 1" BRASS PLUG IN CONC. SIDEWALK STAMPED "ODOT CONTROL 118"	
119	576161.423	1251714.223		89+76.13	50.04	08/17/05	SET 1" BRASS PLUG IN CONC. CURB STAMPED "ODOT CONTROL 119"	
500	576401.481	1247066.692		43+23.14	-32.92	08/11/05	SET 1" BRASS PLUG IN CONC. SIDEWALK STAMPED "ODOT CONTROL 500"	
501	575545.855	1248342.882	470.90	"SR"27+78.83	23.77	09/15/05	SET 1" BRASS PLUG IN CONC. SIDEWALK STAMPED "ODOT CONTROL 501"	
5002	576605.523	1244099.851				08/11/05	FD. 2 1/2" BRASS DISK IN CONC. APPROACH UNABLE TO READ STAMPING 50-2 TAKEN FROM RECORD	CS 66/57
5701	576546.646	1245647.657				08/11/05	FD. 2 3/4" DIA BRASS DISK STAMPED "CITY OF ROSEBURG 57-1"	CS 66/57
RM2	576367.972	1248356.513	481.11			08/16/05	FD. 2 3/4" DIA BRASS DISK STAMPED "DOUGLAS CO. SURVEYORS OFFICE KOW RM2 1979"	CS 66/57

NETWORK OBSERVATIONS

AT	TO
2	5002, 3, 100, 101
3	5002, 2, 100, 101
100	2, 3, 101, 102, 103
101	2, 102, 103, 3
102	100, 101, 103
103	101, 100, 102
104	5701, 105, 106, 107, 115
105	5701, 104, 106, 107, 115
106	104, 105, 107, 108
107	105, 106, 108, 109
108	106, 107, 109, RM2, 110
109	107, 108, 110, RM2, 115, 111
110	108, 109, RM2, 113, 114, 111, 112
111	109, RM2, 110
112	RM2, 110, 113, 114
113	110, RM2, 112, 114
114	RM2, 112, 110, 113, 115
115	104, 105, 109, 114
116	111, 117, 118
117	111, 116, 118, 119
118	116, 117, 119
119	117, 118
5701	5002, 104, 105
RM2	108, 109, 112, 110, 111, 113, 114

SURVEY FEET OREGON DEPARTMENT OF TRANSPORTATION
HORIZONTAL CONTROL, RECOVERY AND RETRACEMENT MAP
OR138E @ RIFLE RANGE ROAD (ROSEBURG)
NORTH UMPQUA HWY.
DOUGLAS COUNTY
KEY NO. 14473

FOR ODOT REGION 3
3500 NW. STEWART PKWY.
ROSEBURG, OR. 97470

OCTOBER 3, 2006
SHEET 2 OF 8