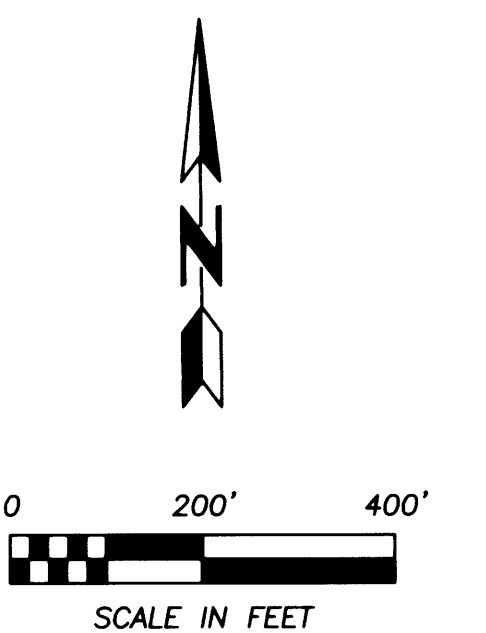
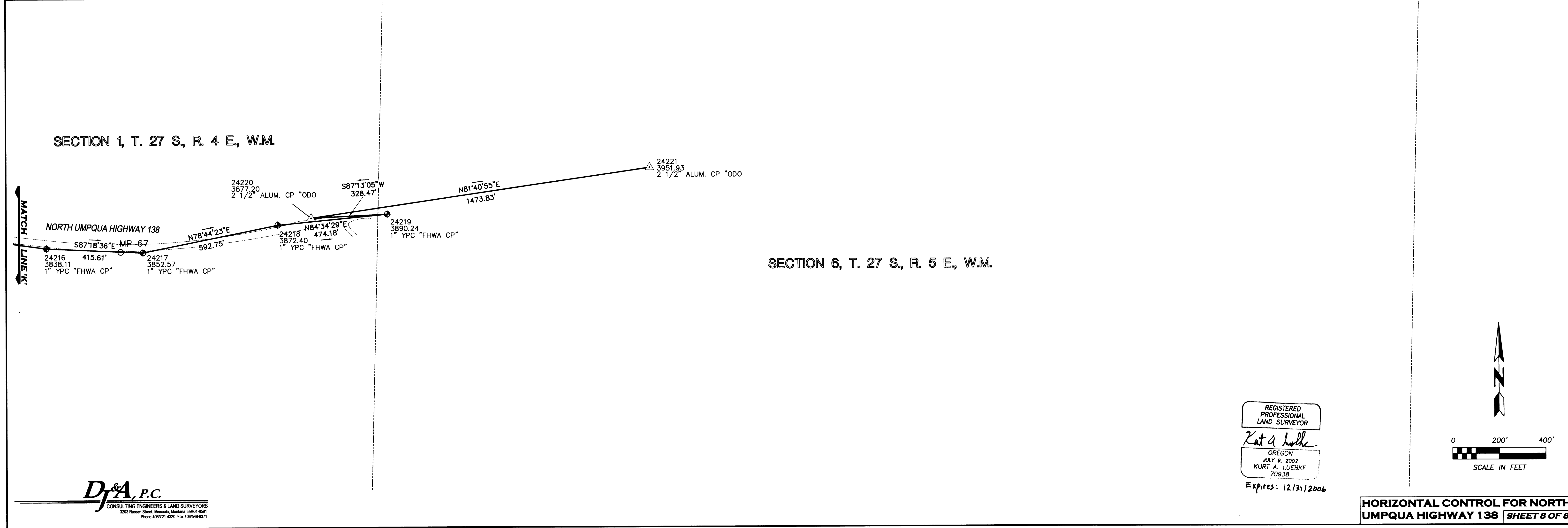
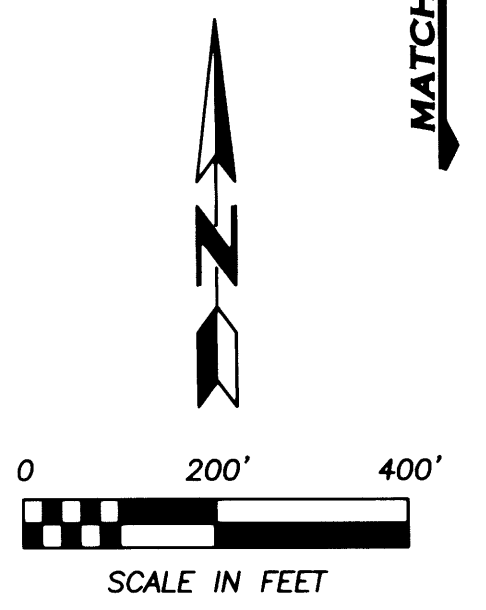
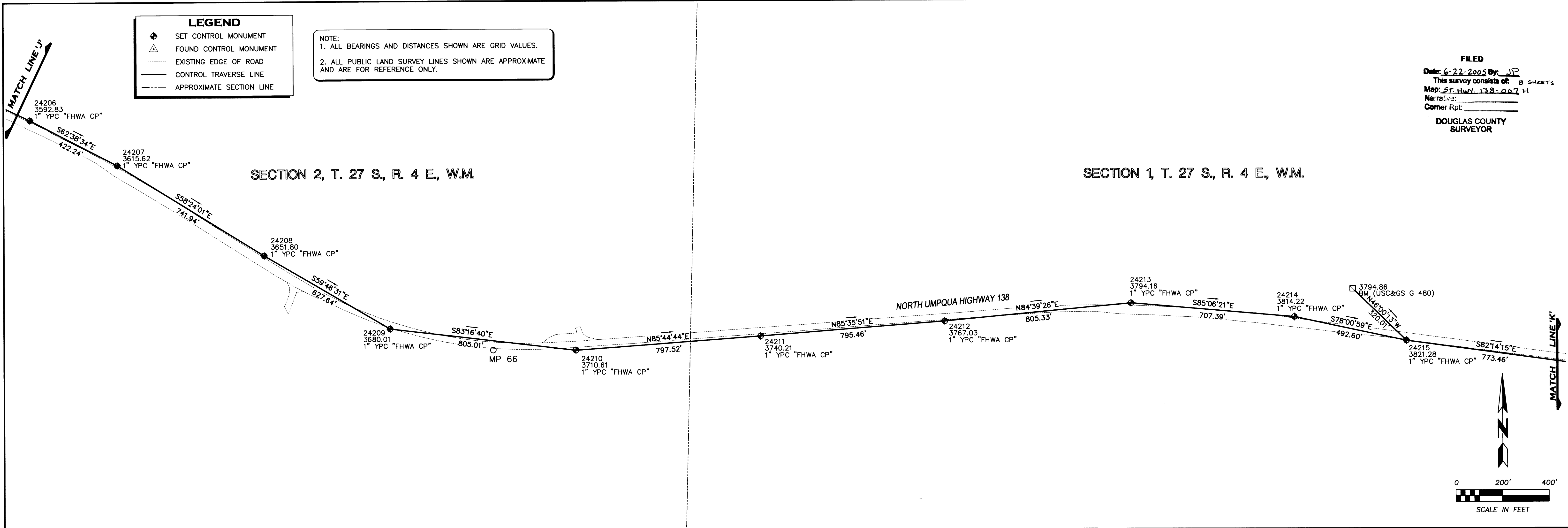


LEGEND

- ◆ SET CONTROL MONUMENT
- △ FOUND CONTROL MONUMENT
- EXISTING EDGE OF ROAD
- CONTROL TRAVERSE LINE
- - - APPROXIMATE SECTION LINE

NOTE:
 1. ALL BEARINGS AND DISTANCES SHOWN ARE GRID VALUES.
 2. ALL PUBLIC LAND SURVEY LINES SHOWN ARE APPROXIMATE AND ARE FOR REFERENCE ONLY.

FILED
 Date: 6-22-2005 By: JLP
 This survey consists of: 8 SHEETS
 Map: ST. HWY. 138-007 H
 Narrative:
 Corner Rpt:
 DOUGLAS COUNTY
 SURVEYOR



REGISTERED
 PROFESSIONAL
 LAND SURVEYOR
Kurt A. Luebke
 OREGON
 JULY 9, 2002
 KURT A. LUEBKE
 70938
 Expires: 12/31/2006

D&A, P.C.
 CONSULTING ENGINEERS & LAND SURVEYORS
 3203 Russell Street, Missoula, Montana 59801-8591
 Phone 406/721-4320 Fax 406/549-8371

**HORIZONTAL CONTROL FOR NORTH
 UMPQUA HIGHWAY 138 SHEET 8 OF 8**

ST. HWY. 138-007H