

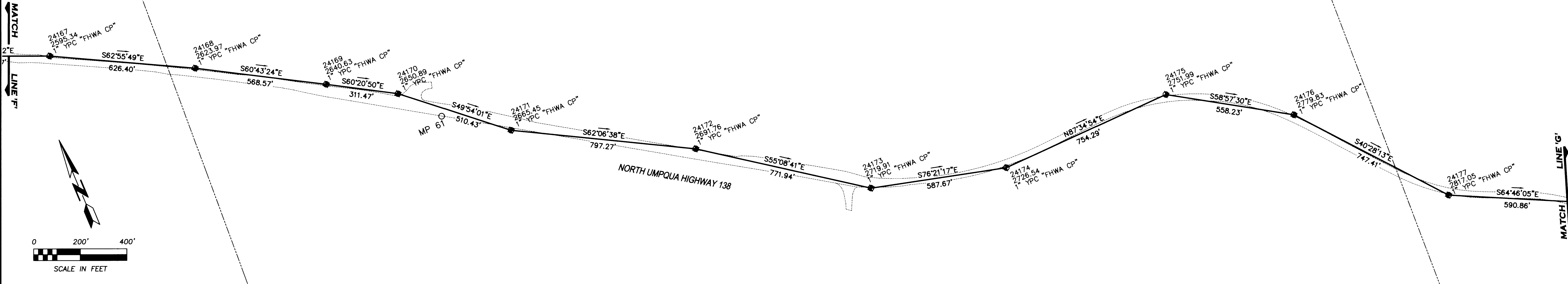
**LEGEND**

- SET CONTROL MONUMENT
- △ FOUND CONTROL MONUMENT
- EXISTING EDGE OF ROAD
- CONTROL TRAVERSE LINE
- - - APPROXIMATE SECTION LINE

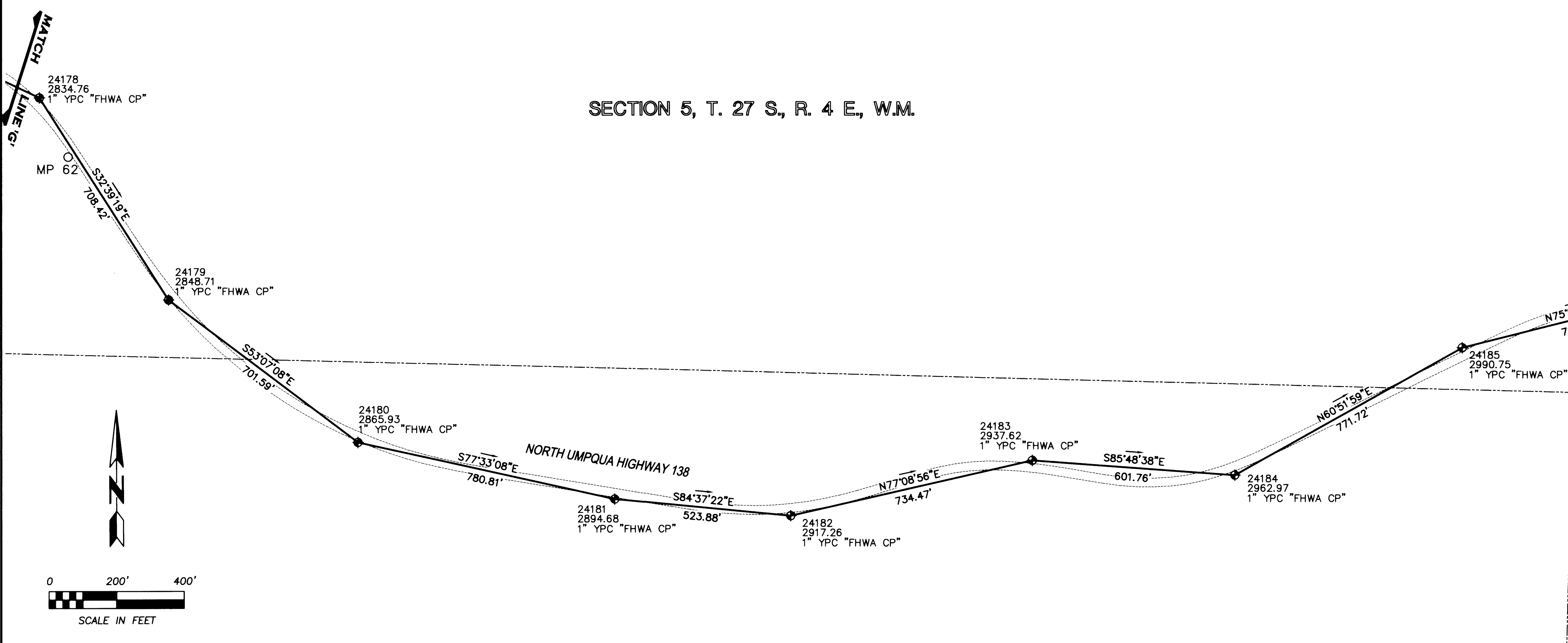
**NOTE:**  
 1. ALL BEARINGS AND DISTANCES SHOWN ARE GRID VALUES.  
 2. ALL PUBLIC LAND SURVEY LINES SHOWN ARE APPROXIMATE AND ARE FOR REFERENCE ONLY.

FILED  
 Date: 6-27-2005 By: JP  
 This survey consists of: 8 SHEETS  
 Map: St. Hwy. 138-007F  
 Name: \_\_\_\_\_  
 Corner Rpt: \_\_\_\_\_  
 DOUGLAS COUNTY  
 SURVEYOR

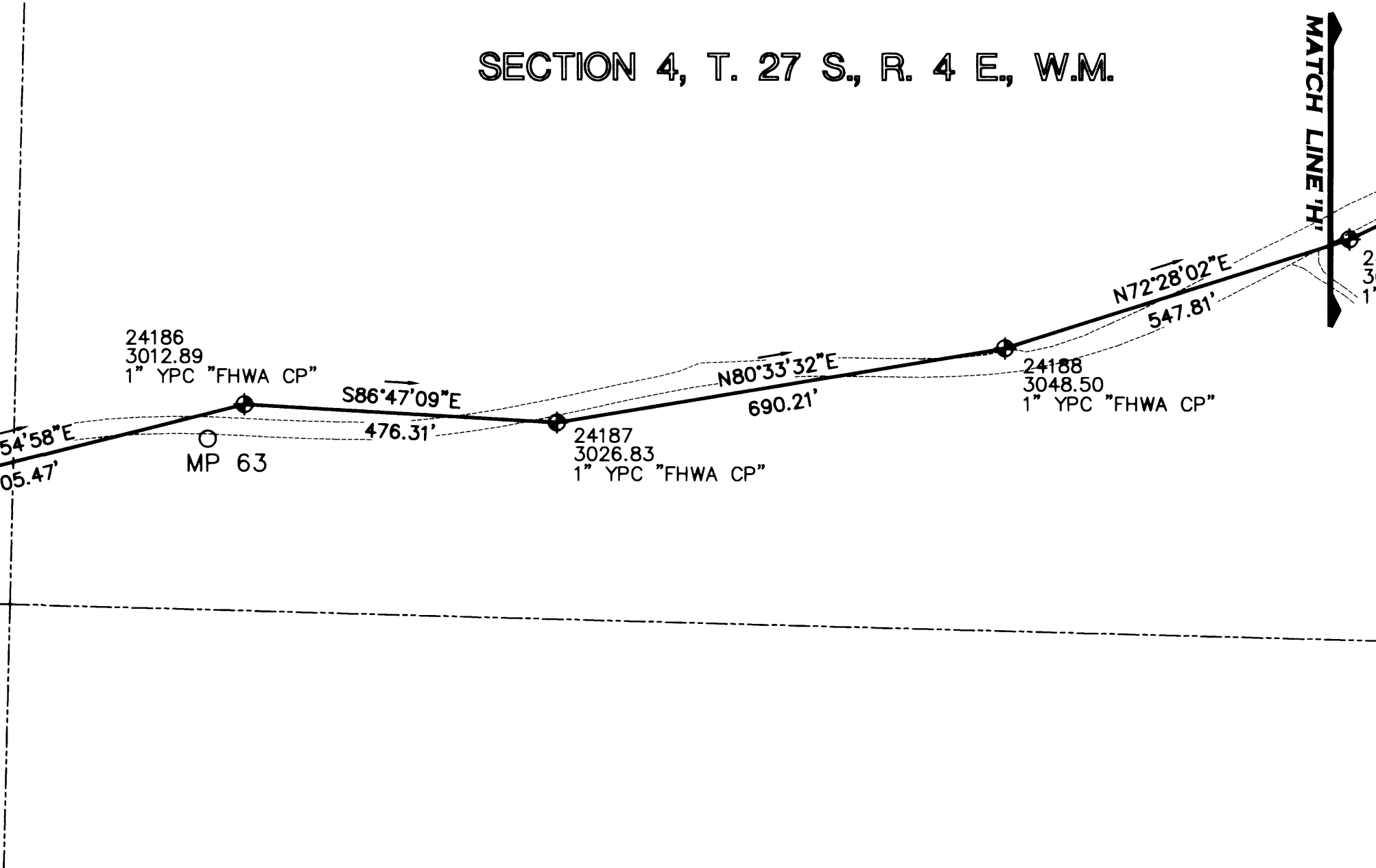
SECTION 6, T. 27 S., R. 4 E., W.M.



SECTION 5, T. 27 S., R. 4 E., W.M.



SECTION 4, T. 27 S., R. 4 E., W.M.



SECTION 8, T. 27 S., R. 4 E., W.M.

SECTION 9, T. 27 S., R. 4 E., W.M.

REGISTERED  
 PROFESSIONAL  
 LAND SURVEYOR  
*Kurt A. Luebke*  
 OREGON  
 JULY 9, 2002  
 KURT A. LUEBKE  
 70938  
 Expires: 12/31/2006

HORIZONTAL CONTROL FOR NORTH  
 UMPQUA HIGHWAY 138 SHEET 6 OF 8

**DJA, P.C.**  
 CONSULTING ENGINEERS & LAND SURVEYORS  
 3203 Russell Street, Missoula, Montana 59801-8591  
 Phone: 406/721-4320 Fax: 406/546-6371