

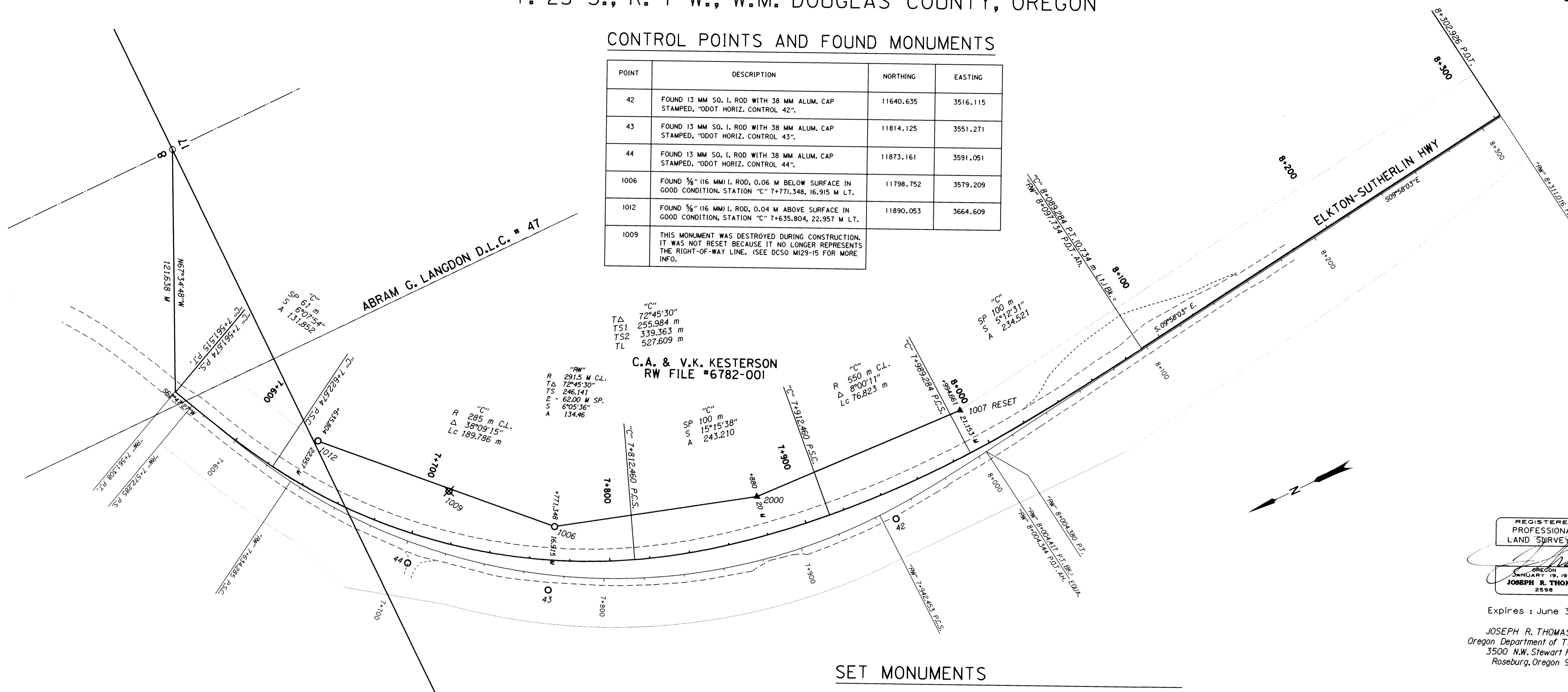
RIGHT-OF-WAY MONUMENTATION MAP

LOCATED IN THE NW 1/4 OF SECTION 17, & THE SW 1/4 OF SECTION 8,
T. 23 S., R. 7 W., W.M. DOUGLAS COUNTY, OREGON

FILED
Date: 3-30-2000 By: JPT
This survey consists of:
Map: M132-27
Narrative:
Corner Rpt:
DOUGLAS COUNTY SURVEYOR JPT

CONTROL POINTS AND FOUND MONUMENTS

POINT	DESCRIPTION	NORTHING	EASTING
42	FOUND 13 MM SO. I. ROD WITH 38 MM ALUM. CAP STAMPED, "ODOT HORIZ. CONTROL 42".	11640.635	3516.115
43	FOUND 13 MM SO. I. ROD WITH 38 MM ALUM. CAP STAMPED, "ODOT HORIZ. CONTROL 43".	11814.125	3551.271
44	FOUND 13 MM SO. I. ROD WITH 38 MM ALUM. CAP STAMPED, "ODOT HORIZ. CONTROL 44".	11873.161	3591.051
1006	FOUND 3/8" (16 MM) I. ROD, 0.06 M BELOW SURFACE IN GOOD CONDITION, STATION "C" 7+771.348, 16.915 M LT.	11798.752	3579.209
1012	FOUND 3/8" (16 MM) I. ROD, 0.04 M ABOVE SURFACE IN GOOD CONDITION, STATION "C" 7+635.804, 22.957 M LT.	11890.053	3664.609
1009	THIS MONUMENT WAS DESTROYED DURING CONSTRUCTION, IT WAS NOT RESET BECAUSE IT NO LONGER REPRESENTS THE RIGHT-OF-WAY LINE. (SEE DCSO M129-15 FOR MORE INFO.)		



SET MONUMENTS

POINT	DESCRIPTION	NORTHING	EASTING
1007	SET 15 MM X 760 MM IRON REBAR WITH 38 MM ALUMINUM CAP STAMPED "ODOT RIGHT-OF-WAY" SET FLUSH WITH THE SURFACE AT STA. "C" 7+994.661, 21.153 M LT. (RESET OF POINT 1007, DCSO MAP #M129-15).	11590.135	3553.419
2000	SET 15 MM X 760 MM IRON REBAR WITH 38 MM ALUMINUM CAP STAMPED "ODOT RIGHT-OF-WAY" SET FLUSH WITH THE SURFACE AT STA. "C" 7+880, 20.0 M LT.	11700.132	3553.603

PURPOSE:

THIS METRIC SURVEY WAS CONDUCTED TO MONUMENT THE RIGHT-OF-WAY CHANGES ALONG HIGHWAY 138W, (ELKTON-SUTHERLIN HWY.) AS A RESULT OF THE RECENTLY COMPLETED SLIDE CORRECTION CONSTRUCTION PROJECT NEAR MILEPOINT 4.7.

PROCEDURE:

POSITION OF TWO RIGHT-OF-WAY MONUMENTS WERE VERIFIED AND TWO RIGHT-OF-WAY MONUMENTS WERE SET AFTER COMPLETION OF THE CONSTRUCTION PROJECT "M.P. 4.7 SLIDE SEC.". USING HORIZONTAL CONTROL POINTS #44 AND #43 FROM DOUGLAS COUNTY SURVEYOR MAP NO. M129-15 (A HORIZONTAL CONTROL, RECOVERY AND RETRACEMENT MAP FILED BY O.D.O.T. DURING THE PROJECT LOCATION PHASE.), CORRECT POSITIONS OF RIGHT-OF-WAY PINS AT STATION "C" 7+635.804, 22.957 M, LT. (ENGLISH "RW" STA. 250+48.57 P.S.C.) AND STATION "C" 7+771.348, 16.915 M LT. (ENGLISH "RW" STA. 255+00) WERE VERIFIED (POINTS 1006 AND 1012).

HORIZONTAL CONTROL POINTS #42 AND #43 FROM SAID DCSO MAP WERE USED TO SET THE FOLLOWING RIGHT-OF-WAY MONUMENTS:

AT STATION "C" 7+880 (20.000 M LT.) A 760 MM X 15MM IRON REBAR WITH 38 MM ALUMINUM CAP STAMPED "ODOT RIGHT-OF-WAY" WAS SET. A WHITE CARSONITE O.D.O.T. BOUNDARY POST WAS SET NEARBY.

AT STATION "C" 7+994.661 (21.153 M LT.) A 760 MM X 15MM IRON REBAR WITH 38 MM ALUMINUM CAP STAMPED "ODOT RIGHT-OF-WAY" WAS SET. THIS POINT HAD BEEN DESTROYED DURING CONSTRUCTION. A WHITE CARSONITE O.D.O.T. BOUNDARY POST WAS SET NEARBY. THIS MONUMENT IS A RESET OF POINT 1007 (ENGLISH STATION "RW" 262+61.21 P.T. BK. = 262+60.97 P.O.T. AH., 80' LT.) FROM SAID DCSO MAP.

THE METRIC FIELD WORK WAS PERFORMED ON NOVEMBER 10, 1999 BY O.D.O.T. STAFF USING A LEICA TCA1800 TOTAL STATION.

(FOR ADDITIONAL INFORMATION, REFER TO O.D.O.T. RIGHT-OF-WAY DRAWING 10B-13-6)

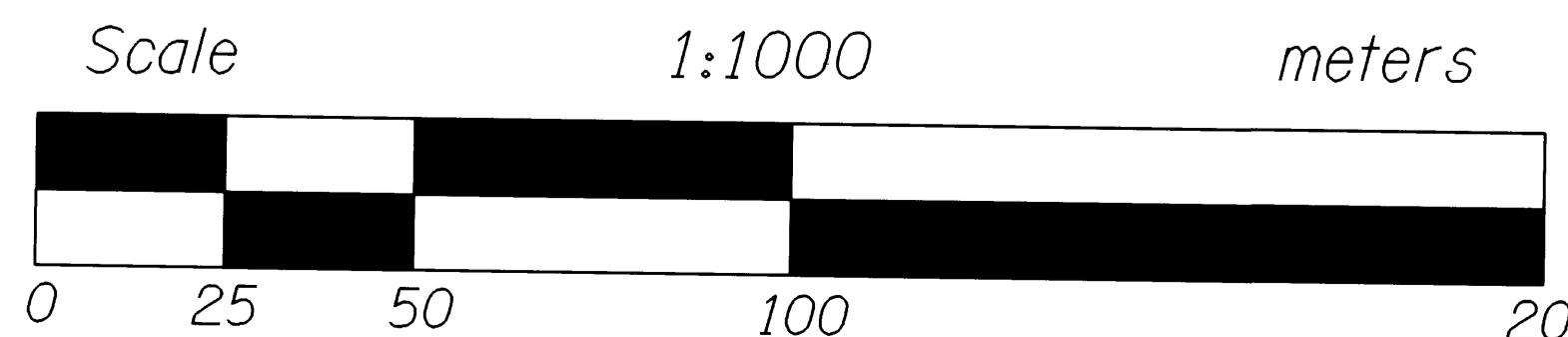
REGISTERED PROFESSIONAL LAND SURVEYOR
Joseph R. Thomas
JOSEPH R. THOMAS
2598

Expires : June 30, 2000

JOSEPH R. THOMAS P.L.S.
Oregon Department of Transportation
3500 N.W. Stewart Parkway
Roseburg, Oregon 97470

LEGEND

- ▲ SET MONUMENT
- FOUND MONUMENT
- ⊗ DESTROYED MONUMENT



OREGON DEPARTMENT OF TRANSPORTATION

RIGHT-OF-WAY MONUMENTATION MAP

M.P. 4.7 SLIDE
ELKTON-SUTHERLIN HIGHWAY
DOUGLAS COUNTY

ODOT
3500 Stewart Parkway, Suite 140
Roseburg, Oregon 97470

KEY NO.: 09988