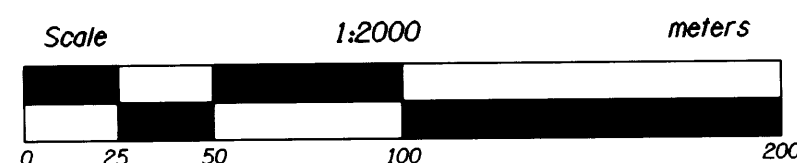
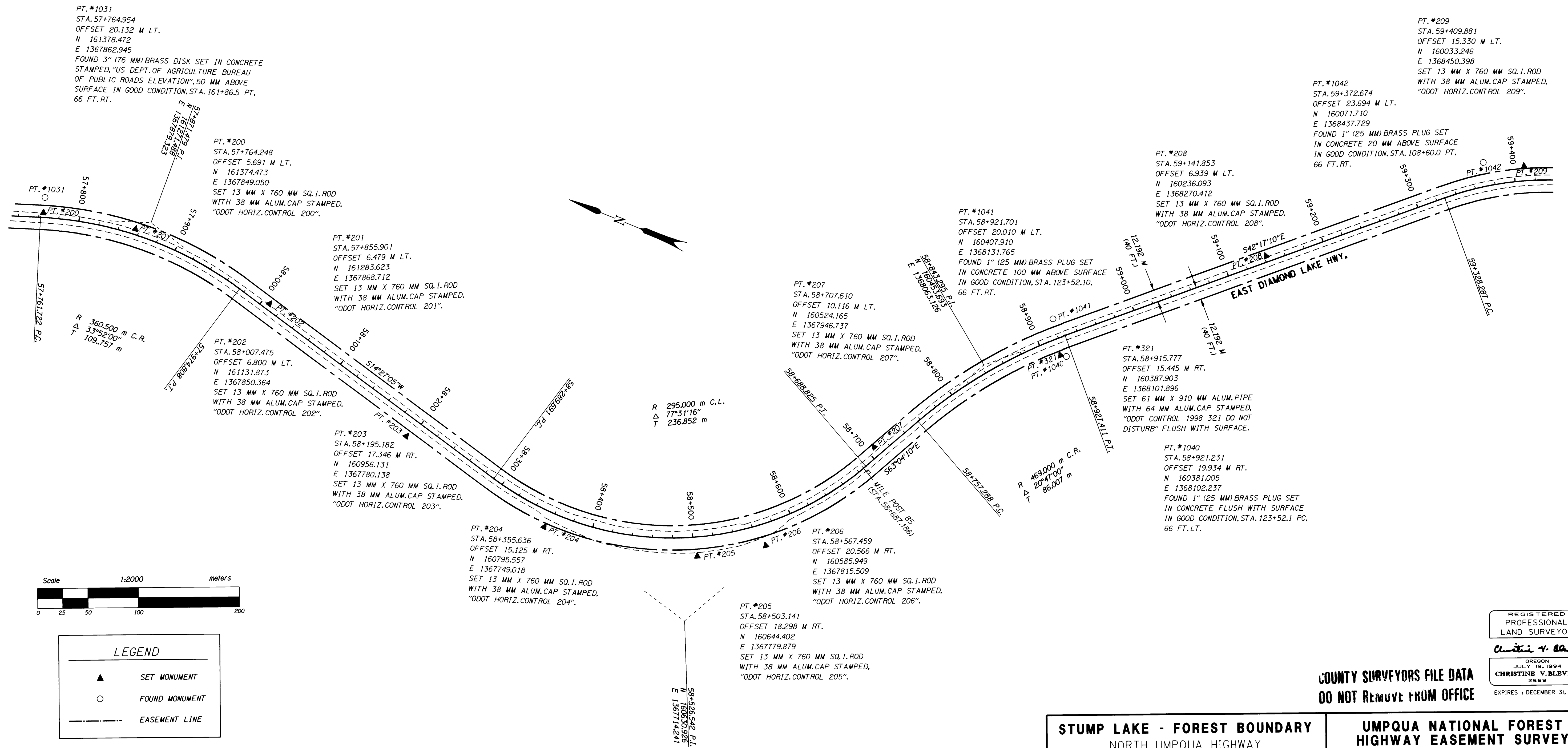




SECTION 33, T. 28 S., R. 5 1/2 E., W. M.

FILED
Date: 6-9-1999, by: JP
This survey consists of: 16 Pages
Map: M129-48L
Narrative:
Corner Rpt:
DOUGLAS COUNTY SURVEYOR



LEGEND
- SET MONUMENT (triangle symbol)
- FOUND MONUMENT (circle symbol)
- EASEMENT LINE (dashed line symbol)

REGISTERED PROFESSIONAL LAND SURVEYOR
Christine V. Blavins
OREGON JULY 19, 1994
CHRISTINE V. BLAVINS 2669
EXPIRES: DECEMBER 31, 1999

COUNTY SURVEYORS FILE DATA
DO NOT REMOVE FROM OFFICE

Table with 3 columns: STUMP LAKE - FOREST BOUNDARY, UMPQUA NATIONAL FOREST HIGHWAY EASEMENT SURVEY, and SHEET 12 OF 16. Includes key number 05788 and address: OREGON DEPT. OF TRANSPORTATION, 3500 NW STEWART PARKWAY, ROSEBURG, OR 97470.