

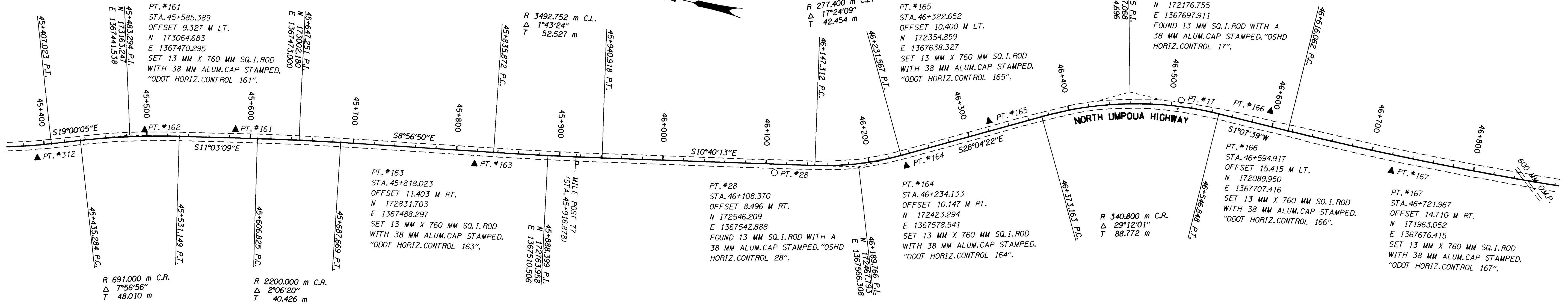


SECTION 17 & 20, T. 27 S., R. 6 E., W. M.

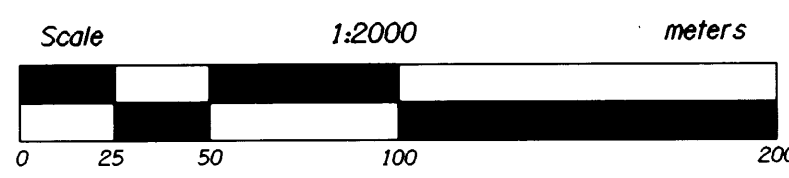
FILED
 Date: 6-9-1999 By: J.P.
 This survey consists of: 16 Pages
 Map: M129-48 H
 Narrative:
 Corner Ppt:
 DOUGLAS COUNTY
 JP SURVEYOR

PT. #312
 STA. 45+392.459
 OFFSET 11.586
 N 173245.742
 E 1367401.103
 SET 61 MM X 910 MM ALUM. PIPE
 WITH 64 MM ALUM. CAP STAMPED.
 "ODOT HORIZ. CONTROL 312 1998
 DO NOT DISTURB". FLUSH WITH
 SURFACE.

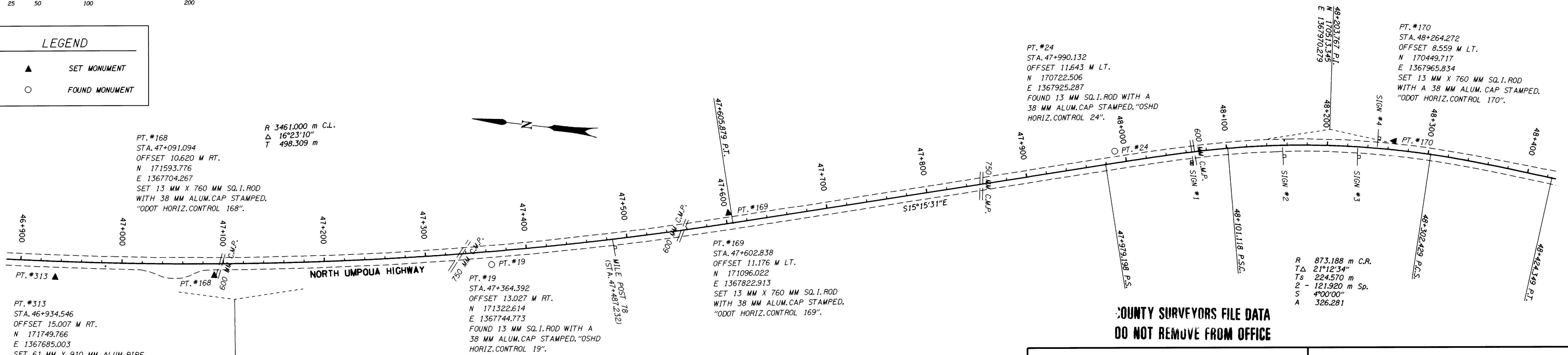
PT. #162
 STA. 45+497.707
 OFFSET 7.044 M LT.
 N 173150.465
 E 1367450.379
 SET 13 MM X 760 MM SQ. I. ROD
 WITH 38 MM ALUM. CAP STAMPED.
 "ODOT HORIZ. CONTROL 162".



SECTION 20 & 29, T. 27 S., R. 6 E., W. M.



LEGEND	
▲	SET MONUMENT
○	FOUND MONUMENT



COUNTY SURVEYORS FILE DATA
 DO NOT REMOVE FROM OFFICE

REGISTERED
 PROFESSIONAL
 LAND SURVEYOR
 Christine V. Blewitt
 OREGON
 JULY 19, 1994
 CHRISTINE V. BLEWITT
 2669
 EXPIRES : DECEMBER 31, 1999

STUMP LAKE - FOREST BOUNDARY NORTH UMPQUA HIGHWAY DOUGLAS COUNTY		UMPQUA NATIONAL FOREST HIGHWAY EASEMENT SURVEY JUNE 1999	
OREGON DEPT. OF TRANSPORTATION 3500 NW STEWART PARKWAY ROSEBURG, OR 97470		KEY NUMBER 05788	SHEET 8 OF 16