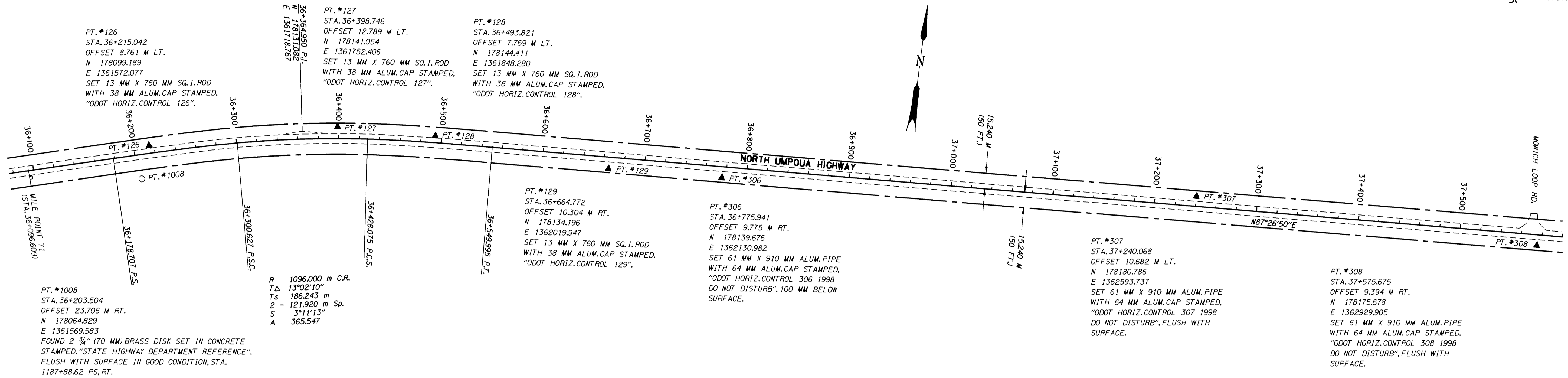


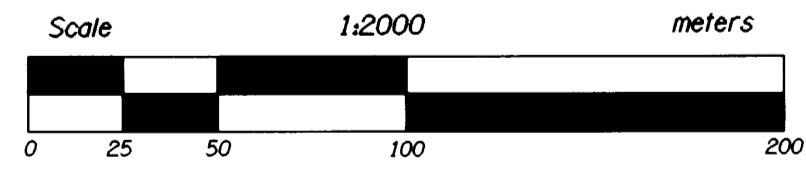
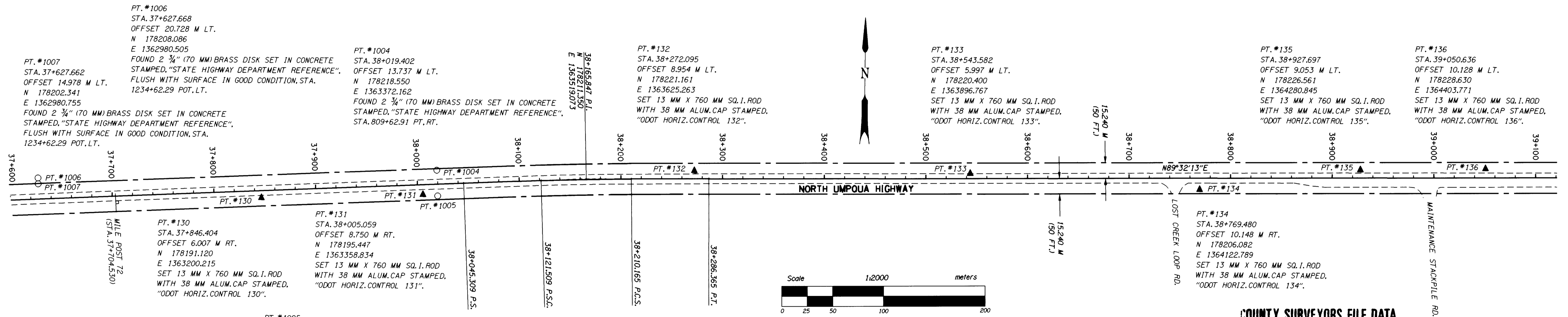


SECTION 34 & 35, T. 26 S., R. 5 E., W. M.

FILED
Date: 6-9-1999 By: JP
This survey consists of: 16 PAGES
Map: M129-48E
Narrative:
Corner Rpt:
DOUGLAS COUNTY SURVEYOR



SECTION 35 & 36, T. 26 S., R. 5 E., W. M.



LEGEND
-▲- SET MONUMENT
-○- FOUND MONUMENT
- - - - EASEMENT LINE

REGISTERED PROFESSIONAL LAND SURVEYOR
Christine V. Blevins
OREGON JULY 19, 1994
CHRISTINE V. BLEVINS 2669
EXPIRES: DECEMBER 31, 1999

COUNTY SURVEYORS FILE DATA
DO NOT REMOVE FROM OFFICE
STUMP LAKE - FOREST BOUNDARY
NORTH UMPQUA HIGHWAY DOUGLAS COUNTY
OREGON DEPT. OF TRANSPORTATION 3500 NW STEWART PARKWAY ROSEBURG, OR 97470
UMPQUA NATIONAL FOREST HIGHWAY EASEMENT SURVEY JUNE 1999
KEY NUMBER 05788 SHEET 5 OF 16