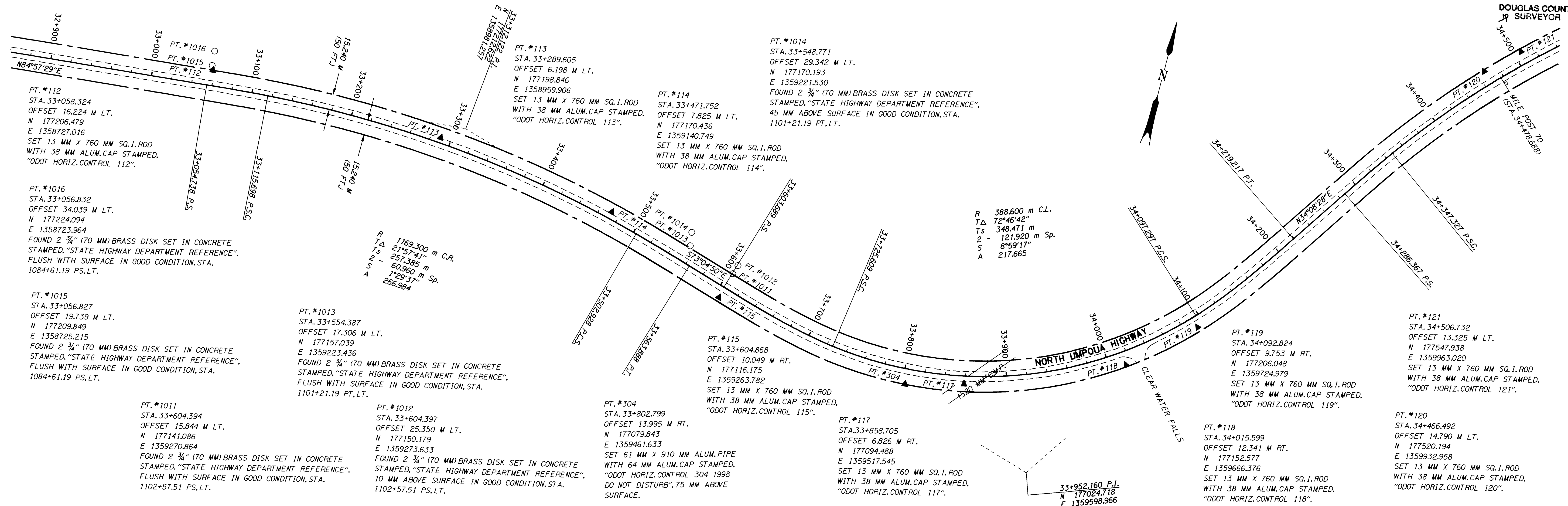


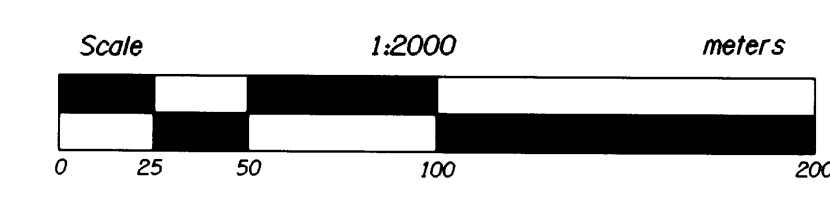
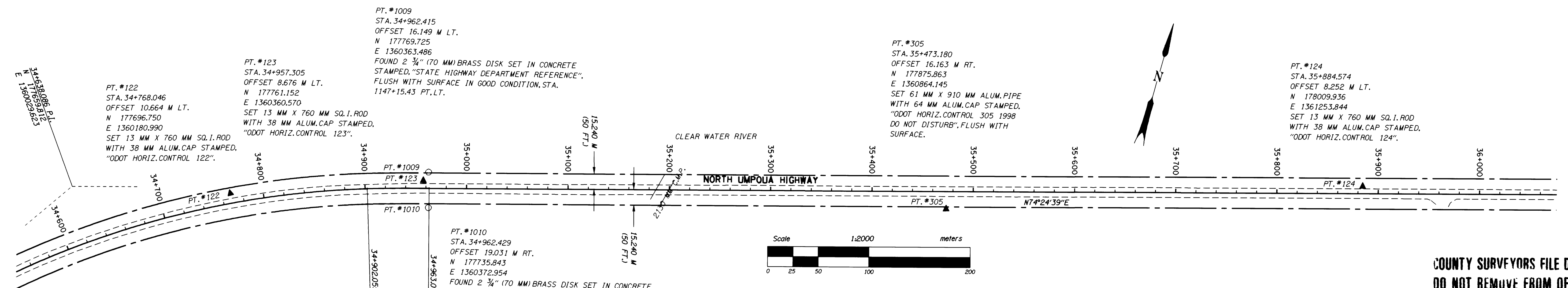


SECTION 4, T. 27 S., R. 5 E., W. M.

FILED
Date: 6-9-1999, By: J.P.
This survey consists of 16 Pages
Map: M129-48 D
Narrative:
Corner Rpt:
DOUGLAS COUNTY
SURVEYOR



SECTION 4 & 3, T. 27 S., R. 5 E., W. M.



LEGEND

- ▲ SET MONUMENT
- FOUND MONUMENT
- EASEMENT LINE

REGISTERED
PROFESSIONAL
LAND SURVEYOR
Christine V. Blevis
OREGON
JULY 19, 1994
CHRISTINE V. BLEVIS
2669
EXPIRES : DECEMBER 31, 1999

STUMP LAKE - FOREST BOUNDARY
NORTH UMPQUA HIGHWAY
DOUGLAS COUNTY
OREGON DEPT. OF TRANSPORTATION
3500 NW STEWART PARKWAY
ROSEBURG, OR 97470

**UMPQUA NATIONAL FOREST
HIGHWAY EASEMENT SURVEY**
JUNE 1999
KEY NUMBER
05788
SHEET 4 OF 16

COUNTY SURVEYORS FILE DATA
DO NOT REMOVE FROM OFFICE

R 876,000 m C.R.
TΔ 4016.11
Ts - 351.719 m Sp.
S - 60,960 m Sp.
A 129.37
231.086