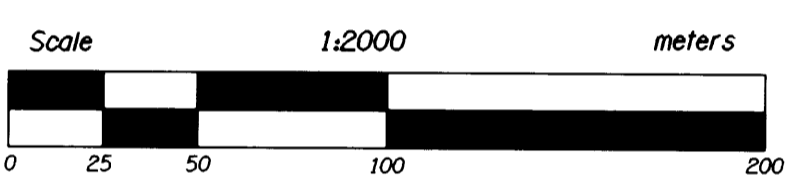
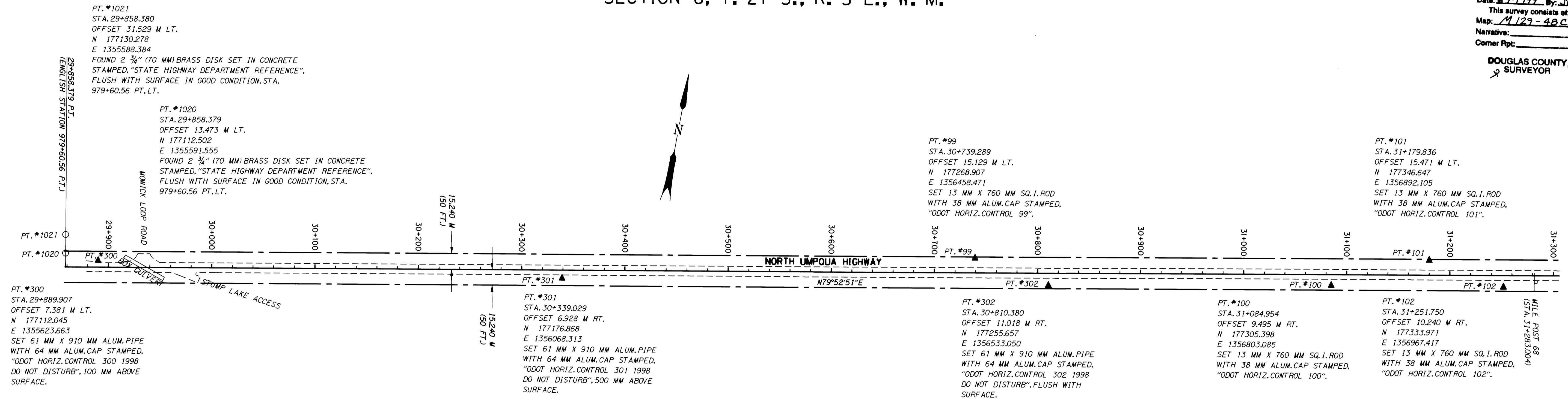


SECTION 6, T. 27 S., R. 5 E., W. M.

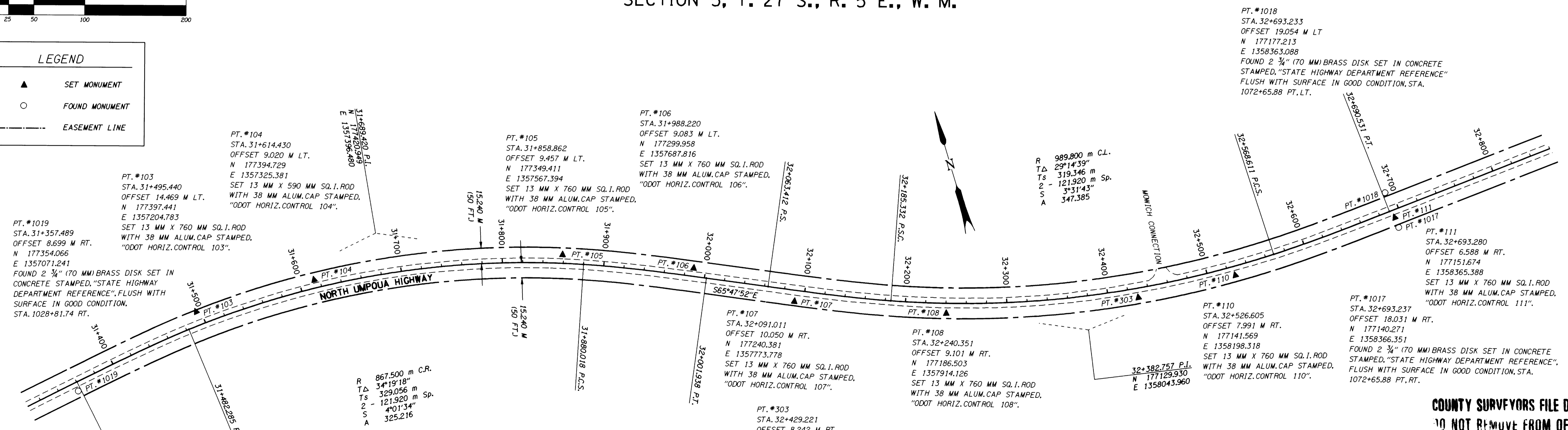
FILED
Date: 6-9-1999 By: JLP
This survey consists of: 16 Pages
Map: M129-48C
Narrative:
Corner Ppt:
DOUGLAS COUNTY SURVEYOR



LEGEND

▲	SET MONUMENT
○	FOUND MONUMENT
---	EASEMENT LINE

SECTION 5, T. 27 S., R. 5 E., W. M.



REGISTERED PROFESSIONAL LAND SURVEYOR
Christine V. Blevins
OREGON JULY 19, 1994
CHRISTINE V. BLEVINS 2669
EXPIRES : DECEMBER 31, 1999

STUMP LAKE - FOREST BOUNDARY
NORTH UMPQUA HIGHWAY
DOUGLAS COUNTY
OREGON DEPT. OF TRANSPORTATION
3500 NW STEWART PARKWAY
ROSEBURG, OR 97470

COUNTY SURVEYORS FILE DATA
NOT REMOVE FROM OFFICE
UMPUQA NATIONAL FOREST
HIGHWAY EASEMENT SURVEY
JUNE 1999
KEY NUMBER 05788
SHEET 3 OF 16