

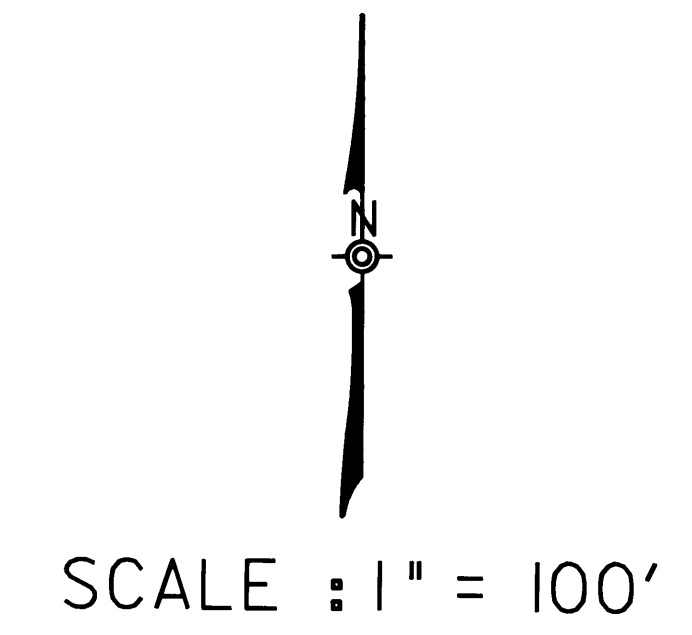
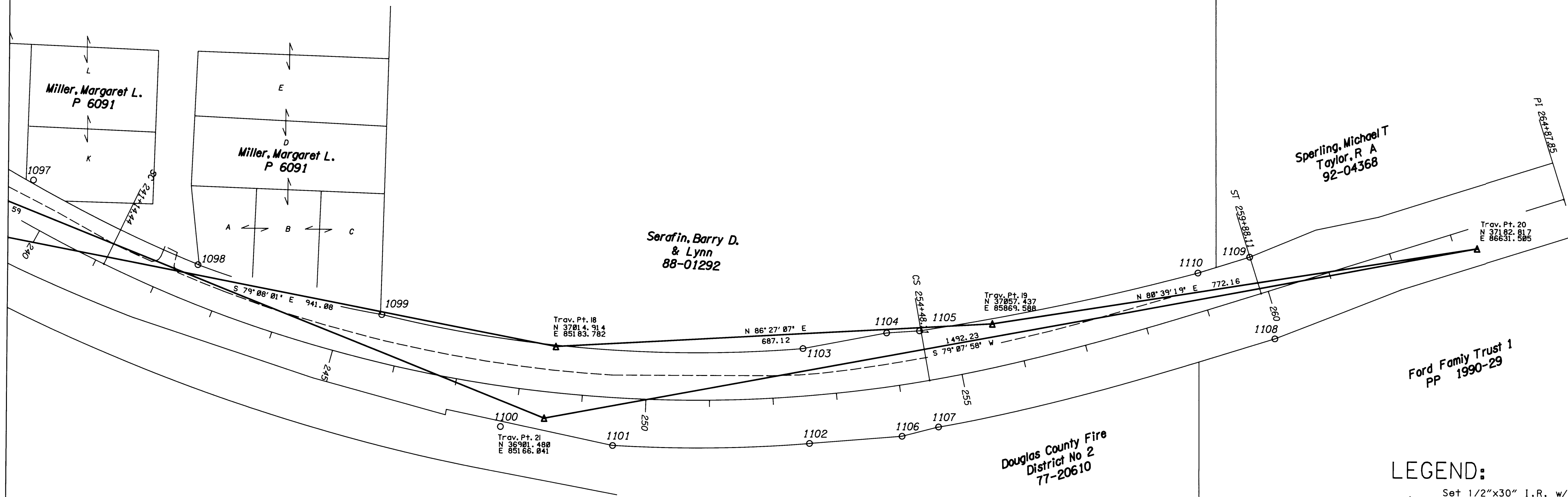
1111

1112

Found 2-1/2" Brass Cap stamped:

T27S	R6W
14	13
23	24
RP LS 544	
1974	

WILLOWDALE SUBDIVISION



**COUNTY SURVEYORS FILE DATA
DO NOT REMOVE FROM OFFICE**

LEGEND:

- ▲ Set 1/2"x30" I.R. w/1-1/2" Alum. cap stamped "OSHD HORIZ CONTROL (Pt. #)".
- Found Monument as noted (see table).
- Control Traverse
- - - Existing Edge of Pavement

Roger E. Paltz
 OREGON
 REGISTERED PROFESSIONAL SURVEYOR
 No. 11111
 Exp 12-31-94

OREGON DEPARTMENT OF TRANSPORTATION
 3099 NE Diamond Lake Blvd., Roseburg, OR 97470
**ROSEBURG EAST CITY LIMITS
 To DIXONVILLE INTERSECTION**
 HORIZONTAL CONTROL MAP
 Located in the SE1/4 and SW1/4 of Sec 15,
 the SE1/4 and SW1/4 of Sec 16, the NE1/4
 of Sec 20, the NW1/4 of Sec 21, the NE1/4
 of Sec 22, and the NW1/4 of Sec 23,
 T27S, R5W, WM
 County: Douglas Highway: North Umpqua
 EA: C0101402 Key #: 05048
 Designer: Dave Collier Coordinates: Assumed
 Basis of Bearings: Preliminary R/W Map 9B-36-13
 Project Manager: Roger Paltz, LS 906
 Scale: 1" = 100' September 1993