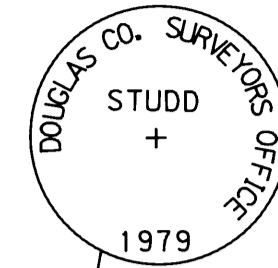


Found 2-3/4" Brass Cap set in concrete stamped:



P & M Cedar Products Inc 82-06285

Real Estate Loan Fund 82-02066

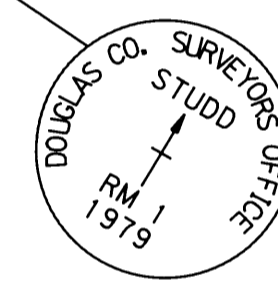
Trav. Pt. 4
N 48°27'2.295"
E 79°37'2.295"

Trav. Pt. 13
N 48°54'362"
E 79°574.498"

Sanders, Cindy L Smith 84-15623

Fitzgerald, Steven P & Brenda C Trs 93-05009

Found 2-3/4" Brass Cap set in concrete stamped:



BERLE FAY CRAFT 392-496



SCALE : 1" = 100'

LEGEND:

- ▲ Set 1/2"x30" I.R. w/1-1/2" Alum. cap stamped "OSHD HORIZ CONTROL (Pt. *)".
- Found Monument as noted (see table).
- Control Traverse
- - - Existing Edge of Pavement

OREGON DEPARTMENT OF TRANSPORTATION
3089 NE Diamond Lake Blvd, Roseburg, OR 97470

**ROSEBURG EAST CITY LIMITS
TO DIXONVILLE INTERSECTION**

HORIZONTAL CONTROL MAP
Located in the SE1/4 and SW1/4 of Sec 15,
the SE1/4 and SW1/4 of Sec 16, the NE1/4
of Sec 20, the NW1/4 of Sec 21, the NE1/4
of Sec 22, and the NW1/4 of Sec 23,
T27S, R5W, WM

County: Douglas Highway: North Umpqua
EA: 00101402 Key #: 05048
Designer: Dave Collier Coordinates: Assumed
Basis of Bearings: Preliminary R/W Map 98-36-13
Project Manager: Roger Pattiz, LS 906

Scale: 1" = 100' September 1993

REGISTERED
PROFESSIONAL
LAND SURVEYOR

Roger E. Pattiz

Exp 12-31-94

COUNTY SURVEYORS FILE DATA
DO NOT REMOVE FROM OFFICE