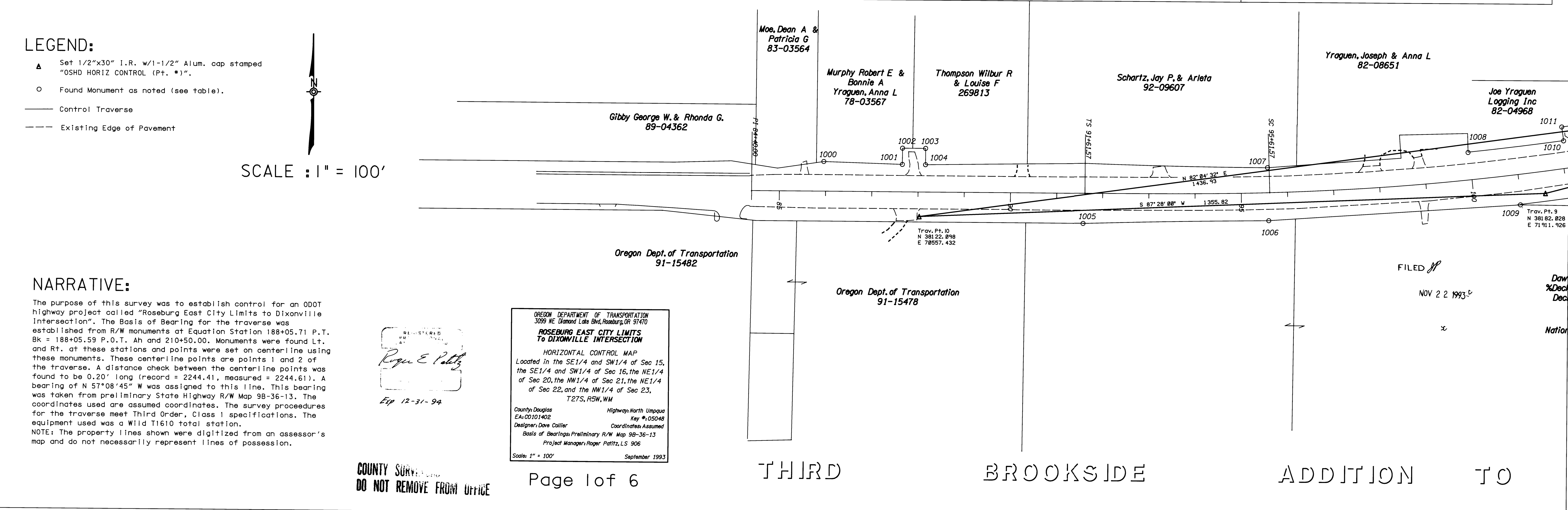


FOUND MONUMENTS

Point No.	Northing	Easting	Description	Point No.	Northing	Easting	Description	Point No.	Northing	Easting	Description	Point No.	Northing	Easting	Description	Point No.	Northing	Easting	Description
1000	38239.84	70350.14	Fd. 5/8" I.R. State Hwy R/W 86+00.00 - 65' Lt.	1023	38821.21	73639.50	Fd. 5/8" I.R. State Hwy R/W 120+00.00 - 65' Lt.	1046	40506.12	77410.29	Fd. 5/8" I.R. State Hwy R/W 161+20.99 - 115' Lt.	1069	40118.53	79714.64	Fd. 5/8" I.R. State Hwy R/W 185+00.00 - 55' Rt.	1090	37855.05	83560.53	Fd. 5/8" I.R. State Hwy R/W 229+60.00 - 130' Lt.
1001	38234.93	70520.08	Fd. 5/8" I.R. State Hwy R/W 87+70.00 - 60' Lt.	1024	38878.08	73679.92	Fd. 5/8" I.R. State Hwy R/W 120+60.00 - 100' Lt.	1047	40285.78	77334.68	Fd. 5/8" I.R. State Hwy R/W 159+75.00 - 65' Rt.	1070	40502.29	79172.29	Fd. 5/8" I.R. State Hwy R/W 178+50.00 - 80' Lt.	1091	37827.97	83602.58	Fd. 5/8" I.R. State Hwy R/W 230+10.00 - 130' Lt.
1002	38270.00	70520.14	Fd. 5/8" I.R. State Hwy R/W 87+70.00 - 95' Lt.	1025	38856.46	73733.39	Fd. 5/8" I.R. State Hwy R/W 121+00.00 - 60' Lt.	1048	40226.04	77359.36	Fd. 5/8" I.R. State Hwy R/W 159+75.00 - 130' Rt.	1071	40049.32	80031.84	Fd. 5/8" I.R. State Hwy R/W 188+05.71 Bk = 188+05.59 Ah - 60' Lt.	1092	37745.85	83609.23	Fd. 5/8" I.R. State Hwy R/W 230+60.00 - 65' Lt.
1003	38269.88	70570.18	Fd. 5/8" I.R. State Hwy R/W 88+20.00 - 95' Lt.	1026	38972.26	74010.10	Fd. 5/8" I.R. State Hwy R/W 124+00.00 - 55' Lt.	1049	40336.37	77469.13	Fd. 5/8" I.R. State Hwy R/W 161+20.99 - 65' Rt.	1072	39941.22	79962.05	Fd. 5/8" I.R. State Hwy R/W 188+05.71 Bk = 188+05.59 Ah - 70' Rt.	1093	37665.95	83724.00	Fd. 5/8" I.R. State Hwy R/W 232+00.00 - 60' Lt.
1004	38234.66	70570.19	Fd. 5/8" I.R. State Hwy R/W 88+20.00 - 60' Lt.	1027	39028.12	74138.43	Fd. 5/8" I.R. State Hwy R/W 125+40.00 - 55' Lt.	1050	40394.28	77659.81	Fd. 5/8" I.R. State Hwy R/W 163+25.00 - 65' Rt.	1073	39332.41	80931.77	Fd. 5/8" I.R. State Hwy R/W 199+50.00 - 55' Rt.	1094	37463.29	84037.74	Fd. 5/8" I.R. State Hwy R/W 235+71.87 - 60' Lt.
1005	38109.50	70912.31	Fd. 5/8" I.R. State Hwy R/W 91+61.57 - 65' Rt.	1028	39096.60	74283.19	Fd. 5/8" I.R. State Hwy R/W 127+00.00 - 60' Lt.	1051	40360.38	77668.90	Fd. 5/8" I.R. State Hwy R/W 163+25.00 - 100' Rt.	1074	39213.84	81033.48	Fd. 5/8" I.R. State Hwy R/W 201+00.00 - 100' Rt.	1095	37205.55	84229.94	Fd. 2-3/4" Brass Cap
1006	38118.41	71314.33	Fd. 5/8" I.R. State Hwy R/W 95+61.57 - 60' Rt.	1029	38963.14	74264.89	Fd. 5/8" I.R. State Hwy R/W 126+30.00 - 55' Rt.	1052	40444.28	77888.66	Fd. 5/8" I.R. State Hwy R/W 165+65.00 - 65' Rt.	1075	39233.58	81076.00	Fd. 5/8" I.R. State Hwy R/W 201+25.00 - 60' Rt.	1096	37201.32	84229.67	Fd. 5/8" I.R. County Rd R/W 35+50.00
1007	38233.32	71310.64	Fd. 5/8" I.R. State Hwy R/W 95+61.57 - 55' Lt.	1030	39270.79	74970.57	Fd. 5/8" I.R. State Hwy R/W 134+00.00 - 55' Rt.	1053	40451.67	77886.96	Fd. 2-3/4" Brass Cap set in concrete.	1076	39293.98	81204.20	Fd. 5/8" I.R. State Hwy R/W 202+00.00 - 60' Lt.	1097	37271.57	84359.21	Fd. 2-3/4" Brass Cap set in concrete
1008	38269.25	71744.03	Fd. 5/8" I.R. State Hwy R/W 100+00.00 - 60' Lt.	1031	39346.16	75156.20	Fd. 5/8" I.R. State Hwy R/W 136+00.00 - 60' Rt.	1054	40408.77	77919.16	Fd. 5/8" I.R. State Hwy R/W 165+85.00 - 105' Rt.	1077	39098.09	81286.04	Fd. 5/8" I.R. State Hwy R/W 203+75.00 - 60' Rt.	1098	37063.23	84909.27	Fd. 5/8" I.R. County Rd R/W 44+88.82 - 40' Lt.
1009	38156.74	71858.08	Fd. 5/8" I.R. State Hwy R/W 101+00.00 - 65' Rt.	1032	39445.55	75086.18	Fd. 5/8" I.R. State Hwy R/W 135+75.00 - 60' Lt.	1055	40416.35	77966.75	Fd. 5/8" I.R. State Hwy R/W 166+40.00 - 105' Rt.	1078	39029.96	81390.88	Fd. 5/8" I.R. State Hwy R/W 205+00.00 - 60' Rt.	1099	37068.82	85097.38	Fd. 5/8" I.R. County Rd R/W 44+88.82 - 40' Lt.
1010	38295.88	71949.92	Fd. 5/8" I.R. State Hwy R/W 102+10.00 - 60' Lt.	1033	39515.08	75144.09	Fd. 5/8" I.R. State Hwy R/W 136+50.00 - 100' Lt.	1056	40609.36	77791.48	Fd. 5/8" I.R. State Hwy R/W 165+00.00 - 115' Lt.	1079	38881.61	81842.42	Fd. 5/8" I.R. State Hwy R/W 209+60.00 - 60' Lt.	1100	36887.82	85097.38	Fd. 5/8" I.R. County Rd R/W 44+88.82 - 40' Lt.
1011	38325.87	71945.68	Fd. 5/8" I.R. State Hwy R/W 102+10.00 - 90' Lt.	1034	39505.86	75223.10	Fd. 5/8" I.R. State Hwy R/W 137+25.00 - 60' Lt.	1057	40644.43	77976.07	Fd. 5/8" I.R. State Hwy R/W 166+80.00 - 120' Lt.	1080	38906.74	81858.61	Fd. 5/8" I.R. State Hwy R/W 209+60.00 - 90' Lt.	1101	36859.64	85274.11	Fd. 5/8" I.R. County Rd R/W 44+88.82 - 40' Lt.
1012	38303.63	71999.09	Fd. 5/8" I.R. State Hwy R/W 102+60.00 - 60' Lt.	1035	39615.50	75475.27	Fd. 5/8" I.R. State Hwy R/W 140+00.00 - 60' Lt.	1058	40638.38	78008.25	Fd. 5/8" I.R. State Hwy R/W 167+10.00 - 110' Lt.	1081	38857.86	81934.10	Fd. 5/8" I.R. State Hwy R/W 210+50.00 - 60' Lt.	1102	36865.90	85583.56	Fd. 5/8" I.R. State Hwy R/W 249+50.00 - 75' Rt.
1013	38333.34	71994.45	Fd. 5/8" I.R. State Hwy R/W 102+60.00 - 90' Lt.	1036	39627.84	75840.85	Fd. 5/8" I.R. State Hwy R/W 143+40.00 - 75' Rt.	1059	40593.68	78013.57	Fd. 5/8" I.R. State Hwy R/W 167+10.00 - 65' Lt.	1082	38832.76	81917.97	Fd. 5/8" I.R. State Hwy R/W 210+50.00 - 60' Lt.	1103	37015.33	85571.91	Fd. 5/8" I.R. State Hwy R/W 252+50.00 - 75' Lt.
1014	38435.88	73037.20	Fd. 5/8" I.R. State Hwy R/W 113+00.00 - 65' Rt.	1037	39499.47	75896.85	Fd. 5/8" I.R. State Hwy R/W 143+40.00 - 215' Rt.	1060	40464.78	78028.58	Fd. 5/8" I.R. State Hwy R/W 167+10.00 - 65' Lt.	1083	38873.91	81853.24	Fd. 5/8" I.R. State Hwy R/W 210+50.00 - 60' Lt.	1104	37041.66	85703.27	Fd. 5/8" I.R. State Hwy R/W 253+90.00 - 85' Lt.
1015	38424.38	73078.63	Fd. 5/8" I.R. State Hwy R/W 113+35.00 - 90' Rt.	1038	39574.56	75956.90	Fd. 5/8" I.R. State Hwy R/W 144+25.00 - 170' Rt.	1061	40611.74	78258.47	Fd. 5/8" I.R. State Hwy R/W 169+50.00 - 65' Lt.	1084	38449.03	82289.87	Fd. 5/8" I.R. State Hwy R/W 215+70.00 - 60' Rt.	1105	37045.43	85754.98	Fd. 5/8" I.R. State Hwy R/W 245+45.53 - 80' Lt.
1016	38493.17	73177.94	Fd. 5/8" I.R. State Hwy R/W 114+50.00 - 60' Rt.	1039	39677.54	75955.67	Fd. 5/8" I.R. State Hwy R/W 144+65.00 - 75' Rt.	1062	40627.85	78309.62	Fd. 5/8" I.R. State Hwy R/W 170+00.00 - 80' Lt.	1085	38170.68	82740.85	Fd. 5/8" I.R. State Hwy R/W 221+00.00 - 50' Rt.	1106	36878.81	85729.03	Fd. 5/8" I.R. State Hwy R/W 253+90.00 - 80' Lt.
1017	38523.30	73241.71	Fd. 5/8" I.R. State Hwy R/W 115+20.18 - 55' Rt.	1040	39815.30	75933.83	Fd. 5/8" I.R. State Hwy R/W 145+00.00 - 60' Lt.	1063	40599.29	78616.61	Fd. 5/8" I.R. State Hwy R/W 173+00.00 - 65' Lt.	1086	37949.05	83073.59	Fd. 5/8" I.R. State Hwy R/W 225+00.00 - 55' Rt.	1107	36893.89	85786.36	Fd. 5/8" I.R. State Hwy R/W 254+45.53 - 75' Rt.
1018	38640.36	73143.13	Fd. 5/8" I.R. State Hwy R/W 114+70.00 - 90' Lt.	1041	39884.35	76066.93	Fd. 5/8" I.R. State Hwy R/W 146+50.00 - 70' Lt.	1064	40480.00	78604.52	Fd. 5/8" I.R. State Hwy R/W 177+50.00 - 65' Lt.	1087	37759.30	83367.71	Fd. 5/8" I.R. State Hwy R/W 228+50.00 - 55' Rt.	1108	37038.02	86314.61	Fd. 5/8" I.R. State Hwy R/W 259+85.53 Bk = 259+75.97 Ah - 75' Rt.
1019	38684.03	73140.49	Fd. 5/8" I.R. State Hwy R/W "F" O+50 - 25' Lt.	1042	40092.53	76282.00	Fd. 5/8" I.R. State Hwy R/W 149+30.00 - 175' Lt.	1065	40516.61	79069.20	Fd. 5/8" I.R. State Hwy R/W 180+00.00 - 70' Lt.	1088	37700.77	83449.04	Fd. 5/8" I.R. State Hwy R/W 229+50.00 - 60' Rt.	1109	37166.62	86273.66	Fd. 5/8" I.R. State Hwy R/W 259+85.53 Bk = 259+75.97 Ah - 60' Lt.
1020	38644.15	73194.92	Fd. 5/8" I.R. State Hwy R/W 115+20.18 - 75' Lt.	1043	40034.71	76738.09	Fd. 5/8" I.R. State Hwy R/W 153+25.00 - 60' Rt.	1066	40443.47	79314.54	Fd. 5/8" I.R. State Hwy R/W 180+00.00 - 55' Rt.	1089	37801.45	83514.19	Fd. 2-3/4" I.P. 1/4 Cor. S 14 & S 23	1110	37140.77	86192.36	Fd. 5/8" I.R. State Hwy R/W 259+00.00 - 60' Lt.
1021	38670.21	73679.51	Fd. 5/8" I.R. State Hwy R/W 119+80.00 - 90' Rt.	1044	40184.87	77082.81	Fd. 5/8" I.R. State Hwy R/W 157+00.99 - 60' Rt.	1067	40326.53	79271.32	Fd. 5/8" I.R. State Hwy R/W 183+85.71 - 55' Rt.					1111	38622.35	84899.35	Fd. 2-1/2" Brass Cap
1022	38788.93	73564.81	Fd. 5/8" I.R. State Hwy R/W 119+20.18 - 65' Lt.	1045	40340.17	77014.94	Fd. 5/8" I.R. State Hwy R/W 157+00.99 - 110' Lt.	1068	40170.45	79615.21					1112	38625.47	87535.01	S 23, & S 24	

- LEGEND:**
- ▲ Set 1/2"x30" I.R. w/1-1/2" Alum. cap stamped "OSHD HORIZ CONTROL (Pt. #)".
 - Found Monument as noted (see table).
 - Control Traverse
 - - - Existing Edge of Pavement

SCALE : 1" = 100'



NARRATIVE:

The purpose of this survey was to establish control for an ODOT highway project called "Roseburg East City Limits to Dixonville Intersection". The Basis of Bearing for the traverse was established from R/W monuments at Equation Station 188+05.71 P.T. Bk = 188+05.59 P.O.T. Ah and 210+50.00. Monuments were found Lt. and Rt. at these stations and points were set on centerline using these monuments. These centerline points are points 1 and 2 of the traverse. A distance check between the centerline points was found to be 0.20' long (record = 2244.41, measured = 2244.61). A bearing of N 57°08'45" W was assigned to this line. This bearing was taken from preliminary State Highway R/W Map 98-36-13. The coordinates used are assumed coordinates. The survey procedures for the traverse meet Third Order, Class 1 specifications. The equipment used was a Wild T1610 total station.

NOTE: The property lines shown were digitized from an assessor's map and do not necessarily represent lines of possession.

REGISTERED
SURVEYOR
Roger E. Paltz
Exp 12-31-94

OREGON DEPARTMENT OF TRANSPORTATION
3059 NE Diamond Lake Blvd, Roseburg, OR 97470

**ROSEBURG EAST CITY LIMITS
TO DIXONVILLE INTERSECTION**

HORIZONTAL CONTROL MAP
Located in the SE1/4 and SW1/4 of Sec 15,
the SE1/4 and SW1/4 of Sec 16, the NE1/4
of Sec 20, the NW1/4 of Sec 21, the NE1/4
of Sec 22, and the NW1/4 of Sec 23,
T27S, R5W, WM

County: Douglas Highway: North Unpaved
EA: 00101402 Key: 4-05048
Designer: Dave Collier Coordinates Assumed
Basis of Bearings: Preliminary R/W Map 98-36-13
Project Manager: Roger Paltz, LS 906

Scale: 1" = 100' September 1993

THIRD BROOKSIDE ADDITION TO