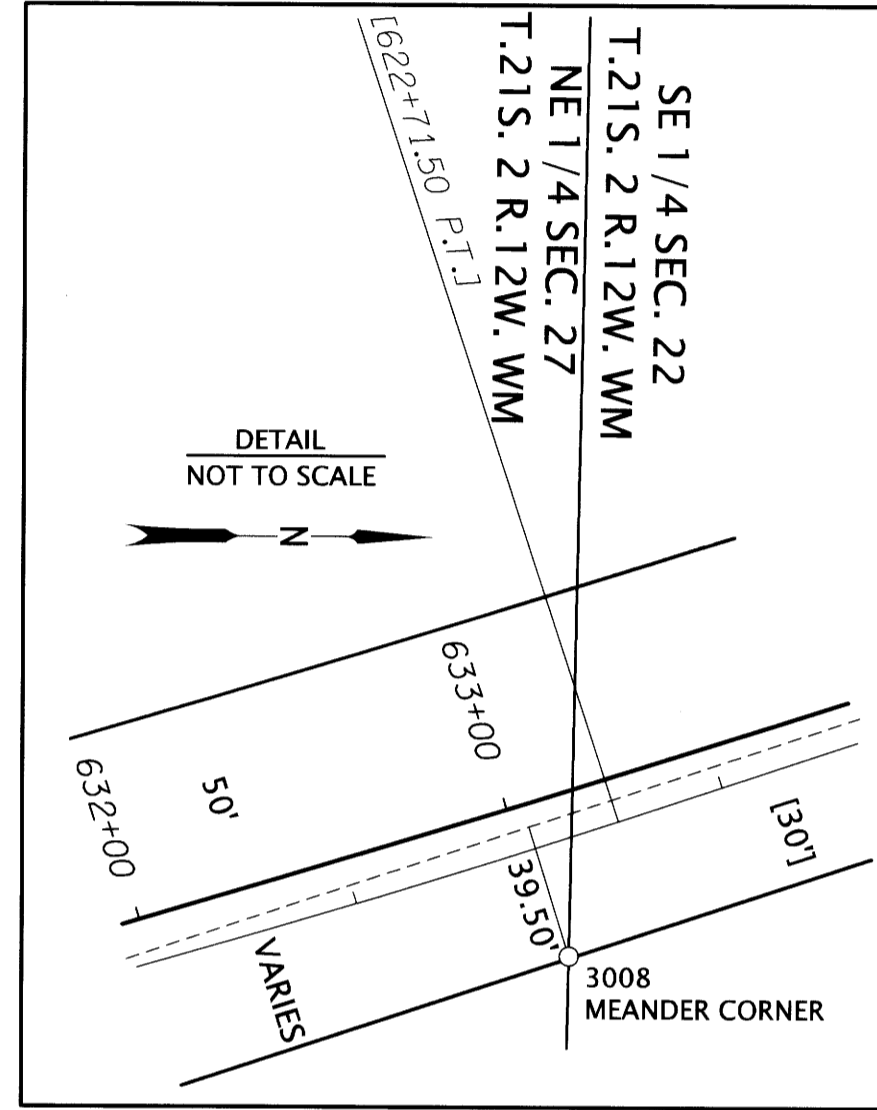


SE 1/4 SECTION 22 T21S R12W WM
NE 1/4 SECTION 27 T21S R12W WM

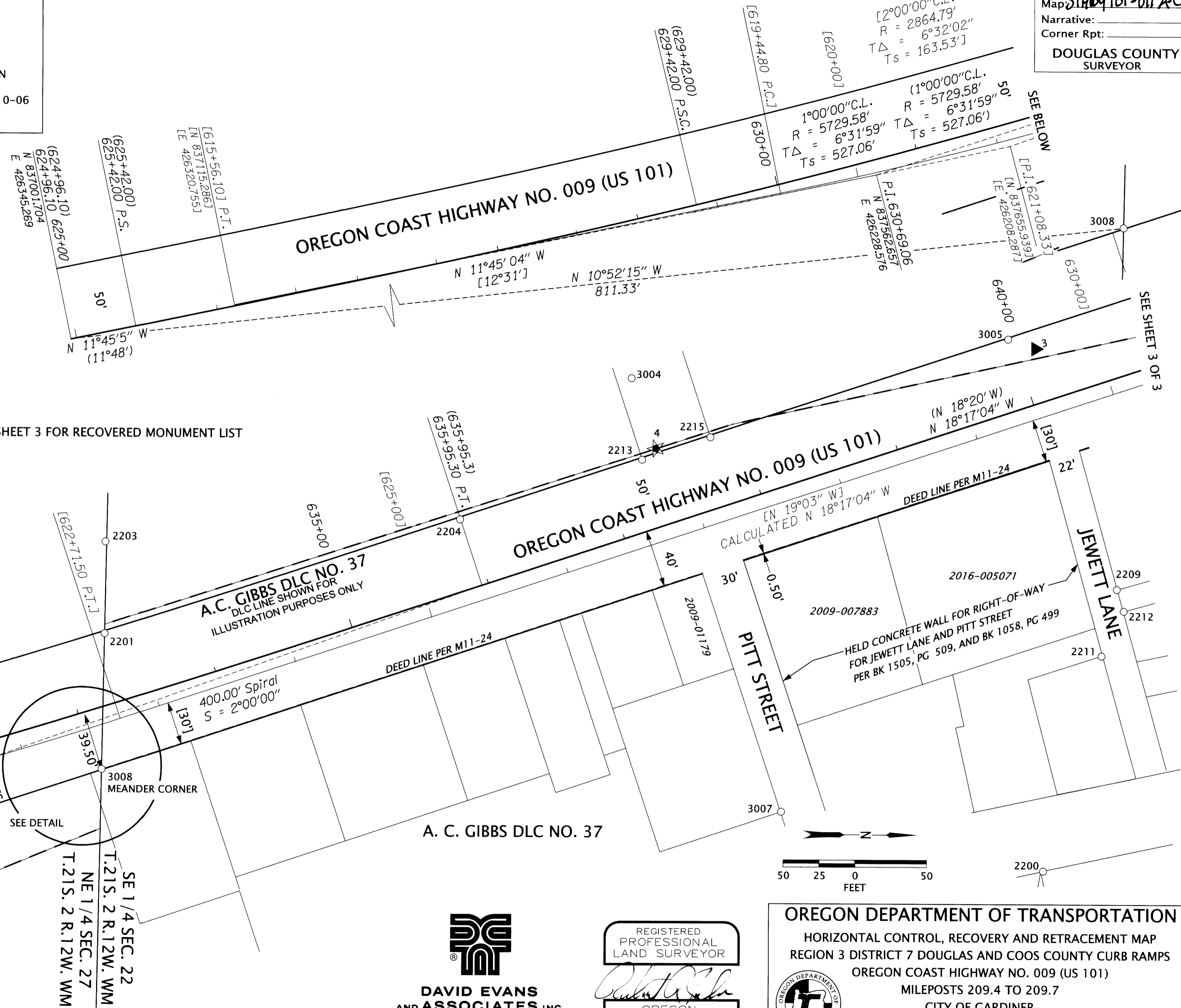
FILED
Date: 4-12-2022 By: *OS*
This survey consists of:
Map: *STHWY 101-011 AC*
Narrative:
Corner Rpt:
DOUGLAS COUNTY
SURVEYOR

LEGEND

▲	SET NETWORK POINT	BS	BRASS SCREW
○	FOUND MONUMENT	CONC	CONCRETE
★	SET GPS POINT	IP	IRON PIPE
—	DLC LINE	IR	IRON ROD
—	SECTION LINE	MON	MONUMENT
—	PROPERTY LINE	W/	WITH
—	RIGHT-OF-WAY LINES	YPC	YELLOW PLASTIC CAP
—	RIGHT-OF-WAY CENTERLINE	()	RECORD INFORMATION
—	CENTERLINE (1B-10-6)	[]	PER 5B-31-5
—	DEED LINE PER M11-24		OLD CENTERLINE 1B-10-06



SEE SHEET 3 FOR RECOVERED MONUMENT LIST



[2°00'00" C.L.
R = 2864.79'
TΔ = 6°32'02"
Ts = 163.53']

[1°00'00" C.L.
R = 5729.58'
TΔ = 6°31'59"
Ts = 527.06']

[2°00'00" C.L.
R = 2864.79'
TΔ = 6°32'02"
Ts = 163.53']

[1°00'00" C.L.
R = 5729.58'
TΔ = 6°31'59"
Ts = 527.06']

[N 19°03' W]
CALCULATED N 18°17'04" W



NOTE:
THE BEARINGS AND COORDINATES SHOWN HEREON ARE BASED ON THE OCS OREGON COAST ZONE. RECORD BEARINGS AND STATIONING ARE SHOWN IN PARENTHESES OR BRACKETS. ALL RESOLVED CURVE DATA AS SHOWN HEREON IS PER RECORD INFORMATION, UNLESS STATED OTHERWISE.

DAVID EVANS AND ASSOCIATES INC.
2100 S River Parkway, Suite 100
Portland Oregon 97201
Phone: 503.223.6663

REGISTERED PROFESSIONAL LAND SURVEYOR
Robert R. Jackson
OREGON
JANUARY 10, 2006
ROBERT R. JACKSON
47721
RENEWS: 6/30/2023

OREGON DEPARTMENT OF TRANSPORTATION
HORIZONTAL CONTROL, RECOVERY AND RETRACEMENT MAP
REGION 3 DISTRICT 7 DOUGLAS AND COOS COUNTY CURB RAMPS
OREGON COAST HIGHWAY NO. 009 (US 101)
MILEPOSTS 209.4 TO 209.7
CITY OF GARDINER
DOUGLAS COUNTY, OREGON

ODOT REGION 3 HEADQUARTERS
3500 NW STEWART PARKWAY
ROSEBURG, OREGON KEY NO. 22387

FEBRUARY 3, 2022
SCALE: 1" = 50'
SHEET 2 OF 3