

POINT LEGEND

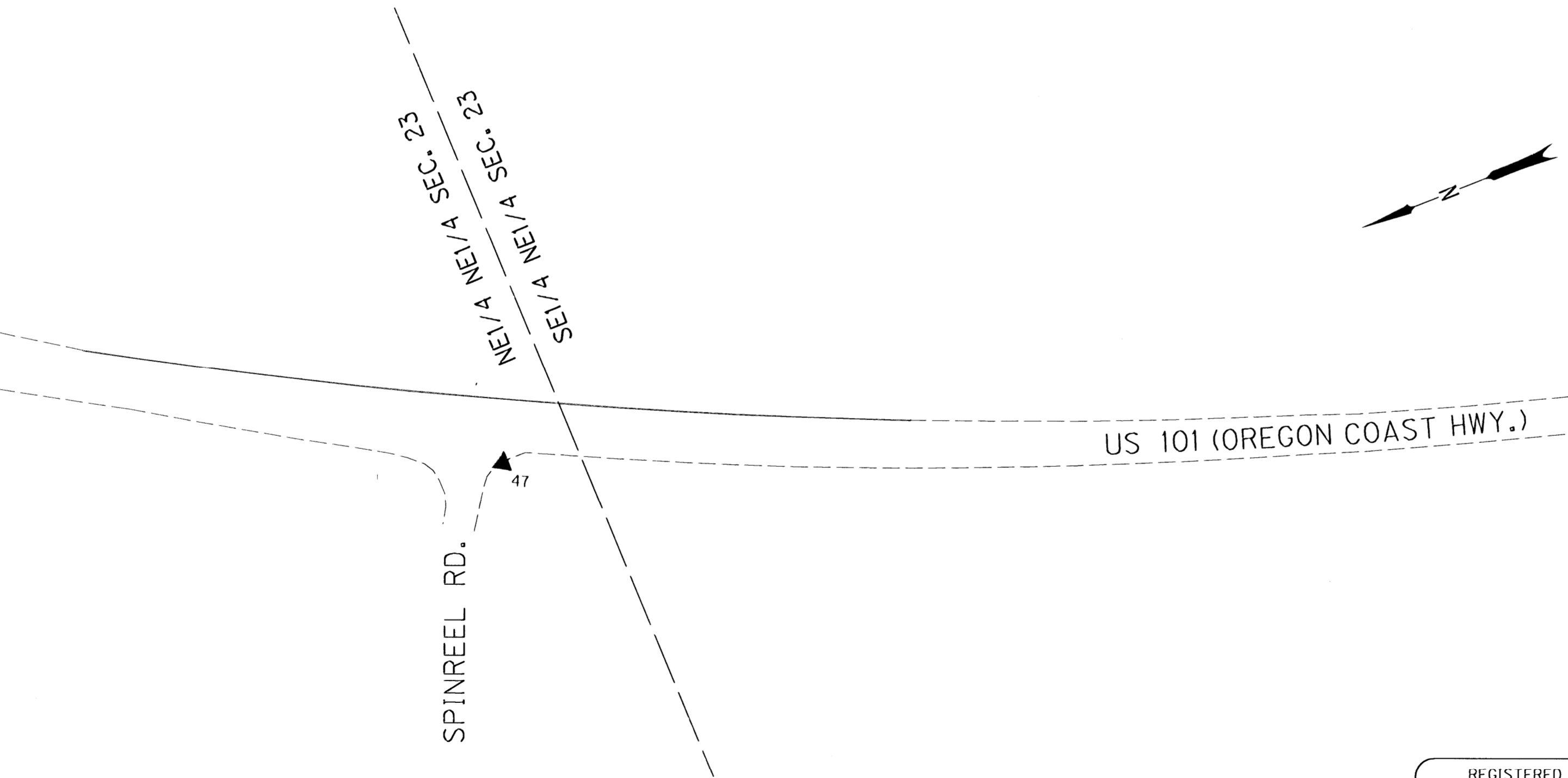
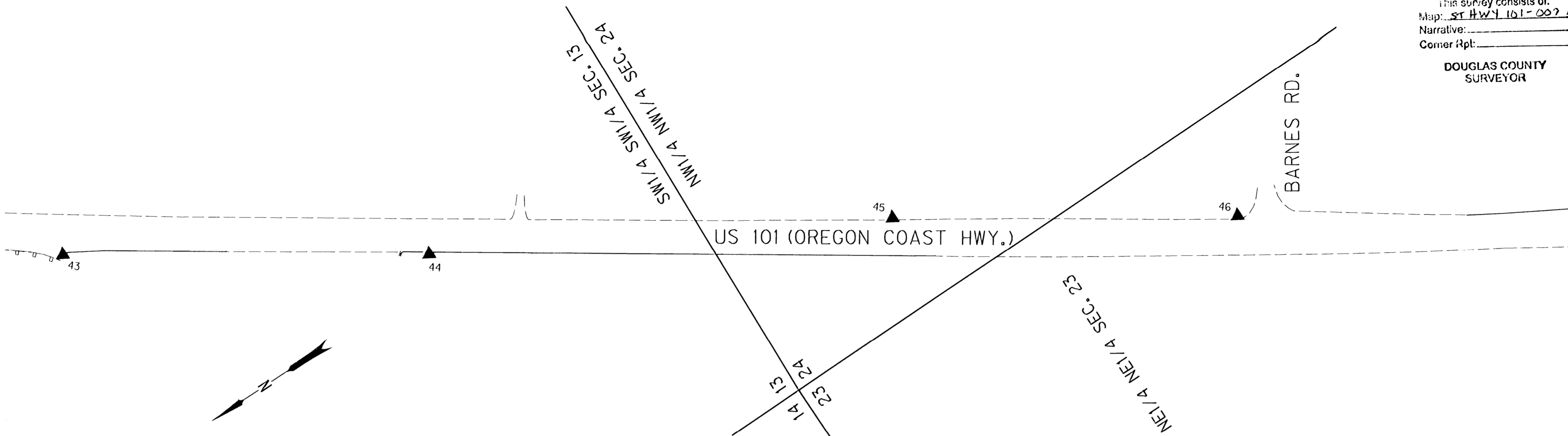
▲ SET NETWORK POINT

SEC. 13, 23, & 24 T.23.S, R.13W., W.M.

FILED

Date: 1-11-2013 By: JC
 This survey consists of:
 Map: ST HWY 101 - 009 A-K
 Narrative:
 Corner Rpt:

DOUGLAS COUNTY
 SURVEYOR

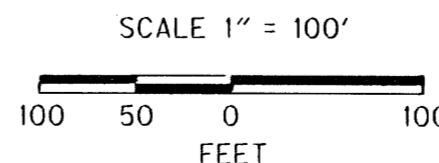


LINE LEGEND

- TOWNSHIP LINE
- SECTION LINE
- - - - QUARTER SECTION LINE
- - - - SIXTEENTH/GOV. LOT LINE
- - - - COUNTY LINE
- LAKESIDE CITY LIMITS

MONUMENT TABLE

PT. NO.	OCRS NORTHING	OCRS EASTING	DATE	DESCRIPTION
43	780899.551	402342.470	8/4/10	SET 5/8" X 25" IRON REBAR WITH 1 1/2" BRASS CAP STAMPED "ODOT CONTROL 43"
44	780467.273	402060.633	8/4/10	SET 5/8" X 30" IRON REBAR WITH 1 1/2" BRASS CAP STAMPED "ODOT CONTROL 44"
45	779892.738	401746.621	8/4/10	SET 5/8" X 30" IRON REBAR WITH 1 1/2" BRASS CAP STAMPED "ODOT CONTROL 45"
46	779483.634	401483.688	8/4/10	SET 5/8" X 30" IRON REBAR WITH 1 1/2" BRASS CAP STAMPED "ODOT CONTROL 46"
47	778879.170	401059.286	8/4/10	SET 5/8" X 30" IRON REBAR WITH 1 1/2" BRASS CAP STAMPED "ODOT CONTROL 47"



REGISTERED
 PROFESSIONAL
 LAND SURVEYOR

Mickey D. Calvert
 OREGON
 NOV. 10, 2011
 MICKEY D. CALVERT
 75099
 EXPIRES: 12/31/2013

SI FEET OREGON DEPARTMENT OF TRANSPORTATION
 HORIZONTAL CONTROL MAP
 US 101: TUGMAN STATE PARK - SPINREEL ROAD PAVING
 OREGON COAST HWY., NO. 9, US 101, M.P. 216.95 - 224.5
 DOUGLAS AND COOS COUNTY
 FILE: 16199RW.DGN MODEL: CRR

FOR ODOT REGION 3
 3500 NW. STEWART PKWY.
 ROSEBURG, OR. 97470

JANUARY 10, 2013
 SCALE: 1" = 100'
 SHEET 11 OF 11

ST HWY 101 - 009 K