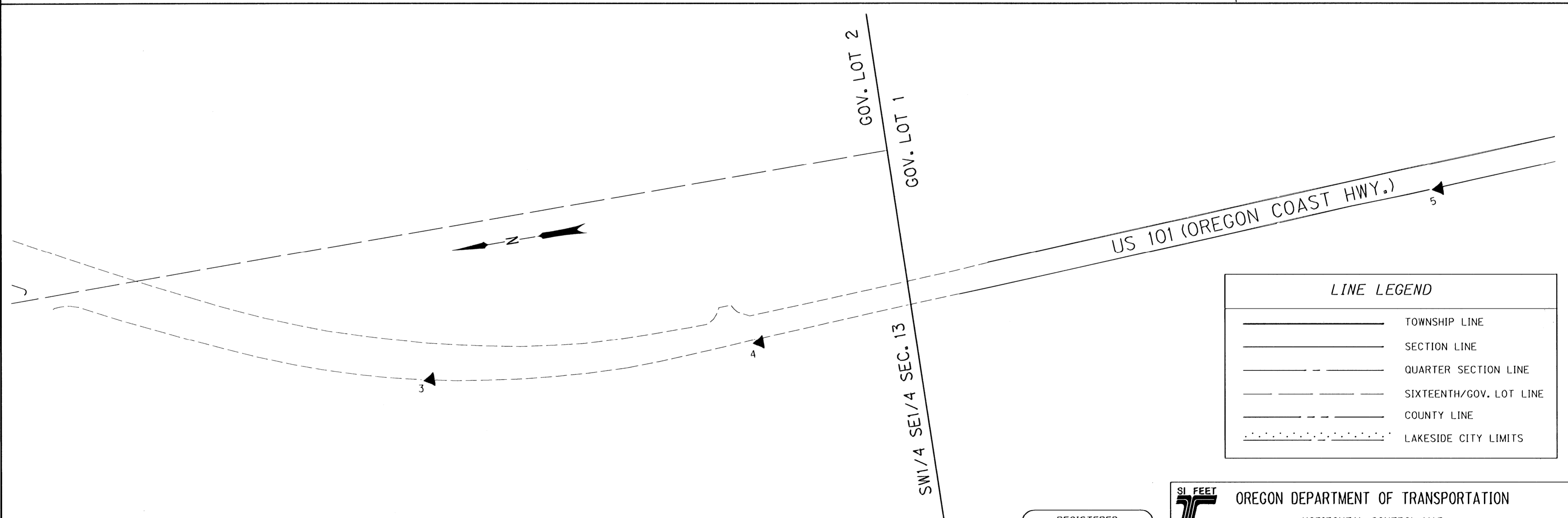
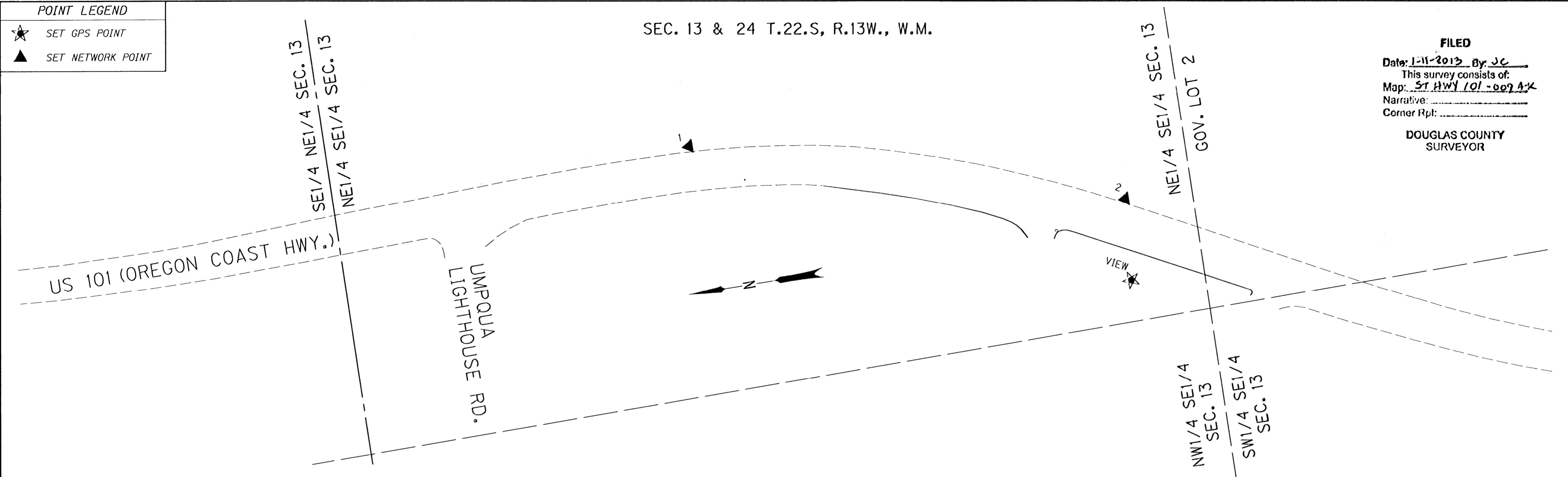


POINT LEGEND

- ★ SET GPS POINT
- ▲ SET NETWORK POINT

SEC. 13 & 24 T.22.S, R.13W., W.M.

**FILED**  
 Date: 1-11-2013 By: JC  
 This survey consists of:  
 Map: ST HWY 101 - 009 A-X  
 Narrative: \_\_\_\_\_  
 Corner Rpt: \_\_\_\_\_  
 DOUGLAS COUNTY  
 SURVEYOR

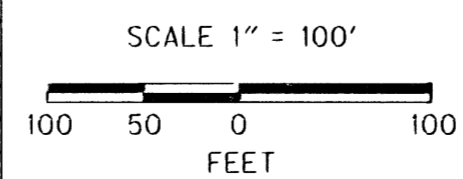


**LINE LEGEND**

	TOWNSHIP LINE
	SECTION LINE
	QUARTER SECTION LINE
	SIXTEENTH/GOV. LOT LINE
	COUNTY LINE
	LAKESIDE CITY LIMITS

MONUMENT TABLE

PT. NO.	OCRS NORTHING	OCRS EASTING	DATE	DESCRIPTION
1	813661.337	405675.751	7/29/10	SET 5/8" X 30" IRON REBAR WITH 1 1/2" BRASS CAP STAMPED "ODOT CONTROL 1"
2	813044.302	405496.496	7/29/10	SET 5/8" X 30" IRON REBAR WITH 1 1/2" BRASS CAP STAMPED "ODOT CONTROL 2"
3	812320.849	405108.785	7/29/10	SET 5/8" X 25" IRON REBAR WITH 1 1/2" BRASS CAP STAMPED "ODOT CONTROL 3"
4	811837.302	405083.870	7/29/10	SET 5/8" X 30" IRON REBAR WITH 1 1/2" BRASS CAP STAMPED "ODOT CONTROL 4"
5	810821.003	405142.866	7/29/10	SET 5/8" X 30" IRON REBAR WITH 1 1/2" BRASS CAP STAMPED "ODOT CONTROL 5"
VIEW	813054.400	405378.563	7/27/10	SET 1" BRASS PLUG IN CONCRETE CURB OF BULB-OUT AT UMPQUA LIGHTHOUSE VIEWPOINT STAMPED "ODOT VIEW" MONUMENT IS LOCATED AT UMPQUA LIGHTHOUSE VIEW POINT IN CURB OF BULB-OUT, OREGON COAST HWY. MILE POST 217.22 +/-



REGISTERED PROFESSIONAL LAND SURVEYOR  
  
 OREGON  
 NOV. 10, 2011  
 MICKEY D. CALVERT  
 75099  
 EXPIRES: 12/31/2013

**SI FEET** OREGON DEPARTMENT OF TRANSPORTATION  
 HORIZONTAL CONTROL MAP  
 US 101: TUGMAN STATE PARK - SPINREEL ROAD PAVING  
 OREGON COAST HWY., NO. 9, US 101, M.P. 216.95 - 224.5  
 DOUGLAS AND COOS COUNTY  
 FILE: 16199RW.DGN MODEL: CRR  
 FOR ODOT REGION 3  
 3500 NW. STEWART PKWY.  
 ROSEBURG, OR. 97470  
 JANUARY 10, 2013  
 SCALE: 1" = 100'  
 SHEET 2 OF 11