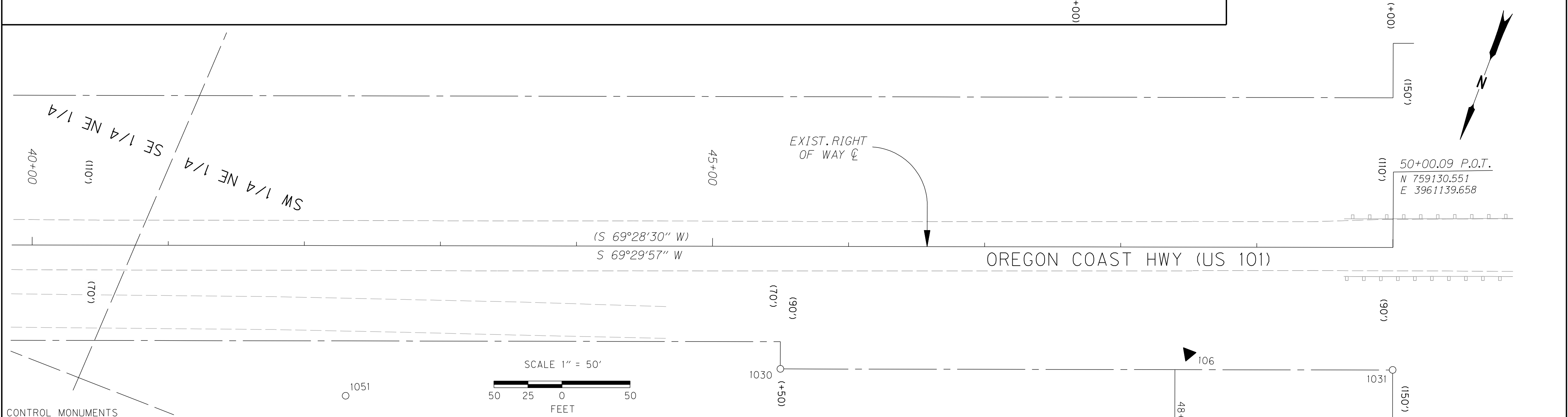
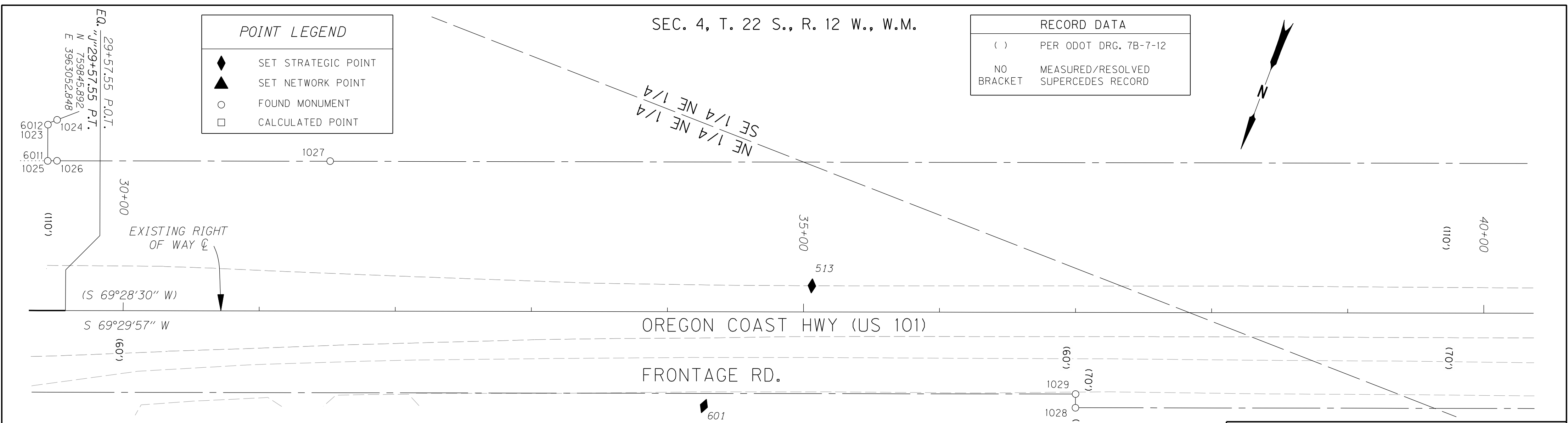


SEC. 4, T. 22 S., R. 12 W., W.M.

RECORD DATA	
( )	PER ODOT DRG. 7B-7-12
NO BRACKET	MEASURED/RESOLVED SUPERCEDES RECORD

POINT LEGEND	
◆	SET STRATEGIC POINT
▲	SET NETWORK POINT
○	FOUND MONUMENT
□	CALCULATED POINT



PT. NO.	LDP NORTHING	LDP EASTING	ELEV.	STATION	OFFSET (- IS LT.)	DATE	DESCRIPTION	REFERENCE
106	759256.519	3961252.903		48+49.90	78.33	8/5/2009	SET MAG NAIL AND WASHER STAMPED "ODOT 106" FLUSH IN A.C. APPROACH	
513	759635.828	3962545.681		35+06.15	-19.14	5/7/2007	SET PK NAIL AND WASHER STAMPED "ODOT 513" FLUSH IN AC. SURFACE	
601	759746.374	3962588.904		34+26.95	69.27	3/27/2011	SET MAG NAIL AND WASHER STAMPED "ODOT 601"	

RECOVERED MONUMENTS & CALCULATED POINTS								
PT. NO.	LDP NORTHING	LDP EASTING	ELEV.	STATION	OFFSET (- IS LT.)	DATE	DESCRIPTION	REFERENCE
1023	759722.576	3963112.888		29+44.49	-136.53	8/11/09	FD. 1/2" I. ROD BENT WEST 0.1 FT. BELOW SURFACE POOR CONDITION	7B-7-12
1024	759716.933	3963107.861		29+51.17	-140.06	8/11/09	FD. 5/8" I. ROD WITH 1 1/4" YELLOW PLASTIC CAP STAMPED "R.J. HINTZ PLS 497" 0.7 FT. BELOW SURFACE GOOD CONDITION.	63/3-5
1025	759747.568	3963103.671		29+44.37	-109.90	8/11/09	FD. 1/2" I. ROD BENT SOUTH 0.1 FT. BELOW SURFACE POOR CONDITION	7B-7-12
1026	759745.081	3963097.316		29+51.19	-110.00	8/11/09	FD. 5/8" I. ROD WITH 1 1/4" YELLOW PLASTIC CAP STAMPED "R.J. HINTZ PLS 497" 0.7 FT. BELOW SURFACE GOOD CONDITION	63/3-5
1027	759674.678	3962909.316		31+51.94	-110.10	8/11/09	FD. 5/8" I. ROD WITH 1 1/4" YELLOW PLASTIC CAP STAMPED "R.J. HINTZ PLS 497" 0.3 FT. BELOW SURFACE GOOD CONDITION	63/3-5
1028	759651.489	3962332.879		36+99.99	70.06	8/11/09	FD. 1/2" I. ROD BENT NW 0.1 FT. BELOW SURFACE POOR CONDITION	7B-7-12
1029	759642.011	3962336.326		37+00.09	59.97	8/11/09	FD. 1/2" I. ROD BENT SE 0.9 FT. BELOW SURFACE POOR CONDITION	7B-7-12
1030	759372.386	3961529.682		45+50.07	89.92	8/11/09	FD. 1/2" I. ROD UNDER BACK OF CONC. WALK 0.4 FT. BELOW SURFACE GOOD CONDITION	7B-7-12
1031	759214.752	3961108.219		50+00.05	89.88	8/11/09	FD. 1 1/2" ALUM. CAP STAMPED "OREG. STATE HWY. DIV." 0.5 FT. BELOW SURFACE GOOD CONDITION	7B-7-12
1032	759270.908	3961087.251		50+00.02	149.82	8/11/09	FD. 3/4" I. ROD 0.4 FT. BELOW SURFACE GOOD CONDITION	7B-7-12
1051	759503.329	3961821.830		42+30.57	110.26	4/4/11	FD. T-BOLT 0.3 FT. BELOW SURFACE GOOD CONDITION	M49-44
6011	759747.471	3963103.707		29+44.37	-110.00		CALCULATED POINT	
6012	759721.765	3963113.318		29+44.37	-137.44		CALCULATED POINT	

**SI FEET**

**OREGON DEPARTMENT OF TRANSPORTATION**  
 CONTROL, RECOVERY, RETRACEMENT AND  
 RIGHT OF WAY BOUNDARY MONUMENTATION MAP  
 US101: REEDSPORT TO WINCHESTER BAY PAVING  
 OREGON COAST HIGHWAY NO. 9, US101, M.P. 211.41 - 215.77  
 DOUGLAS COUNTY  
 FILE: 13769RW.DGN MODEL: RWM

FOR ODOT REGION 3  
 3500 NW. STEWART PKWY.  
 ROSEBURG, OR. 97470

JUNE 29, 2011  
 SCALE: 1" = 50'  
 SHEET 6 OF 6