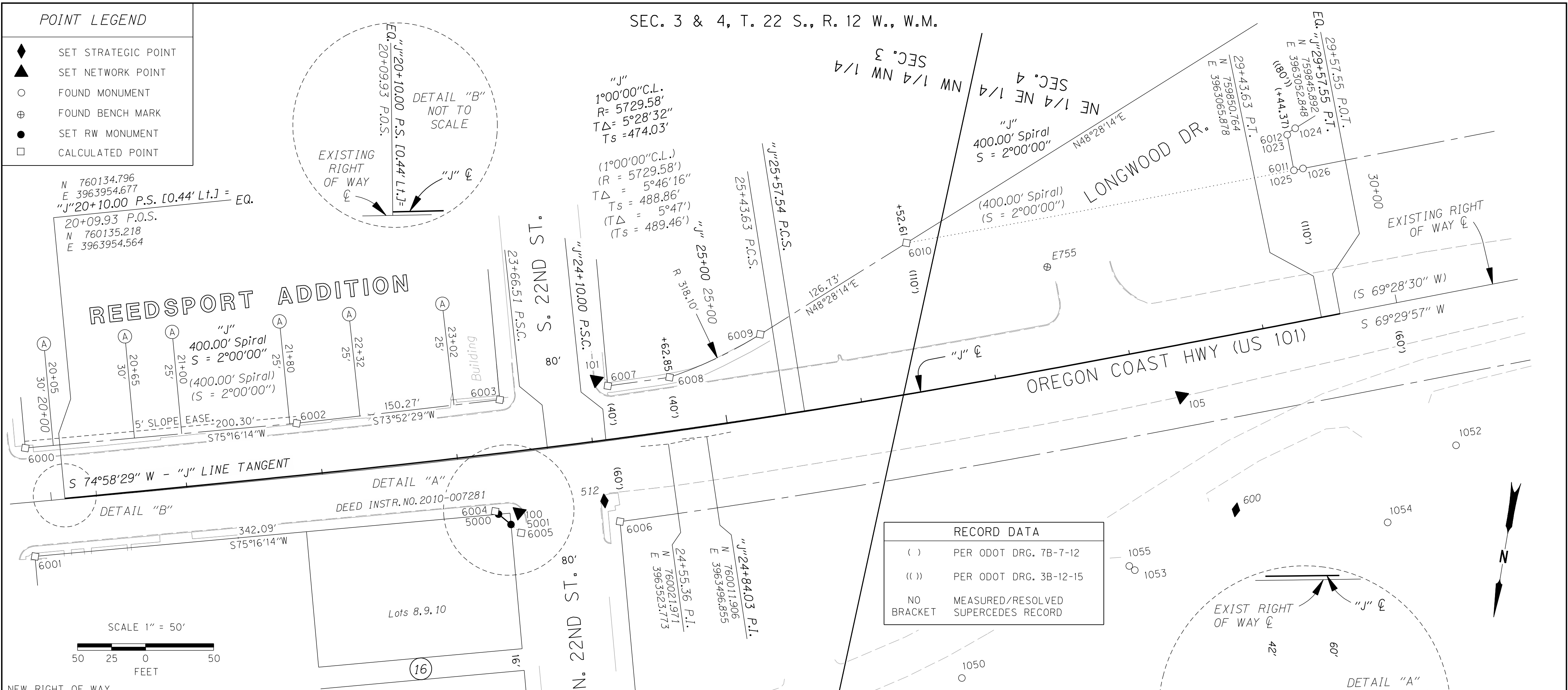


POINT LEGEND

- ◆ SET STRATEGIC POINT
- ▲ SET NETWORK POINT
- FOUND MONUMENT
- ⊕ FOUND BENCH MARK
- SET RW MONUMENT
- CALCULATED POINT

SEC. 3 & 4, T. 22 S., R. 12 W., W.M.



PT. NO.	LDP NORTHING	LDP EASTING	STATION	OFFSET (- IS LT.)	DATE	DESCRIPTION
5000	760093.463	3963638.390	23+25.15	43.37	6/20/2011	SET 5/8" X30" I. REBAR W/ 2" ALUM. CAP STAMPED "ODOT RIGHT OF WAY 5000" 0.02' BELOW A.C. AT INTERSECTION OF EXTG. & NEW RIGHT OF WAY
5001	760099.422	3963628.116	23+33.26	51.99	6/20/2011	SET 5/8" X30" I. REBAR W/ 2" ALUM. CAP STAMPED "ODOT RIGHT OF WAY 5001" 0.05' BELOW A.C. AT INTERSECTION OF EXTG. & NEW RIGHT OF WAY
6004	760091.824	3963641.215	"J" 23+23.00	42.00		CALCULATED FALSE CALL POINT (DEFINES DIRECTION OF RIGHT OF WAY LINE NOT END POINT)
6005	760104.288	3963619.726	"J" 23+40.00	60.00		CALCULATED FALSE CALL POINT (DEFINES DIRECTION OF RIGHT OF WAY LINE NOT END POINT)

CONTROL MONUMENTS

NGS = NATIONAL GEODETIC SURVEY

PT. NO.	LDP NORTHING	LDP EASTING	ELEV.	STATION	OFFSET (- IS LT.)	DATE	DESCRIPTION	REFERENCE
100	760089.747	3963623.752	65.81	23+40.13	43.94	8/5/2009	SET 1" DIA. BRASS PLUG STAMPED "ODOT CONTROL 100" FLUSH IN CONC. WALK	
101	759984.416	3963583.911	66.25	24+08.75	-45.37	8/5/2009	SET 1" DIA. BRASS PLUG STAMPED "ODOT CONTROL 101" FLUSH IN CONC. WALK	
105	759925.048	3963157.764		28+31.65	37.50	8/5/2009	SET MAG NAIL AND WASHER STAMPED "ODOT 105" FLUSH IN A.C. SHOULDER	
512	760070.981	3963563.265	66.35	24+02.99	43.44	5/7/2007	SET 1" BRASS PLUG STAMPED "ODOT CONTROL 512" FLUSH IN CONC. SIDEWALK	
E755	759847.623	3963270.727	68.79	27+52.26	-74.18	5/7/2007	FD. 1/2" STAINLESS STEEL ROD HAD THROUGH A 5" LOGO CAP STAMPED "E755 1988" (NAVD 88 DATUM)	NGS 1988
600	760000.694	3963104.391				3/27/2011	SET MAG NAIL AND WASHER STAMPED "ODOT 600" IN A.C.	

RECOVERED MONUMENTS & CALCULATED POINTS

BPA = BONNEVILLE POWER ADMINISTRATION

PT. NO.	LDP NORTHING	LDP EASTING	ELEV.	STATION	OFFSET (- IS LT.)	DATE	DESCRIPTION	REFERENCE
1050	760155.898	3963282.643				3/27/11	FD. 3 1/2" BRASS DISK STAMPED "BONNEVILLE POWER ADMINISTRATION" FLUSH WITH SURFACE GOOD CONDITION	BPA
1051	759503.329	3961821.830				4/4/11	FD. T-BOLT 0.3 FT. BELOW SURFACE GOOD CONDITION	M49-44
1052	759927.129	3962952.730				4/4/11	FD. 5/8" IRON ROD 0.2 FT. BELOW SURFACE GOOD CONDITION	M49-44
1053	760056.674	3963170.415				4/4/11	FD. 3 1/2" BRASS DISK STAMPED "BONNEVILLE POWER ADMINISTRATION" BENT SLIGHTLY EAST FAIR CONDITION	BPA
1054	759991.330	3962992.944				4/4/11	FD. 1 1/4" YELLOW PASTIC CAP STAMPED "ESTABROOK 2703" 0.3 FT. ABOVE SURFACE FAIR CONDITION	M127-49
1055	760054.332	3963174.915				4/4/11	FD. 5/8" IRON ROD 0.3 FT. BELOW SURFACE GOOD CONDITION	M127-49
6002	760052.125	3963795.794		21+85.02	-39.24		CALCULATED ANGLE POINT IN RIGHT OF WAY	
6003	760010.389	3963651.434		23+36.07	-40.01		CALCULATED SE CORNER OF 22ND ST. & US101	
6006	760084.050	3963549.444		24+12.26	60.00		CALCULATED NW CORNER OF 22ND ST. & US101	
6007	759987.218	3963574.805		24+16.68	-40.00		CALCULATED SW CORNER OF 22ND ST. & US101	
6008	759973.460	3963531.068		24+62.85	-40.00		CALCULATED END OF 318.10' RADIUS CURVE	
6009	759931.296	3963470.565		25+34.07	-61.34		CALCULATED BEGINNING OF 318.10' RADIUS CURVE	
6010	759847.273	3963375.694		26+52.61	-110.00		CALCULATED END OF ACCESS CONTROL	

SI FEET

OREGON DEPARTMENT OF TRANSPORTATION  
CONTROL, RECOVERY, RETRACEMENT AND  
RIGHT OF WAY BOUNDARY MONUMENTATION MAP  
US101: REEDSPORT TO WINCHESTER BAY PAVING  
OREGON COAST HIGHWAY NO. 9, US101, M.P. 211.41 - 215.77  
DOUGLAS COUNTY

FILE: 13769RW.DGN MODEL: RWM

FOR ODOT REGION 3  
3500 NW STEWART PKWY.  
ROSEBURG, OR. 97470

JUNE 29, 2011  
SCALE: 1" = 50'  
SHEET 5 OF 6