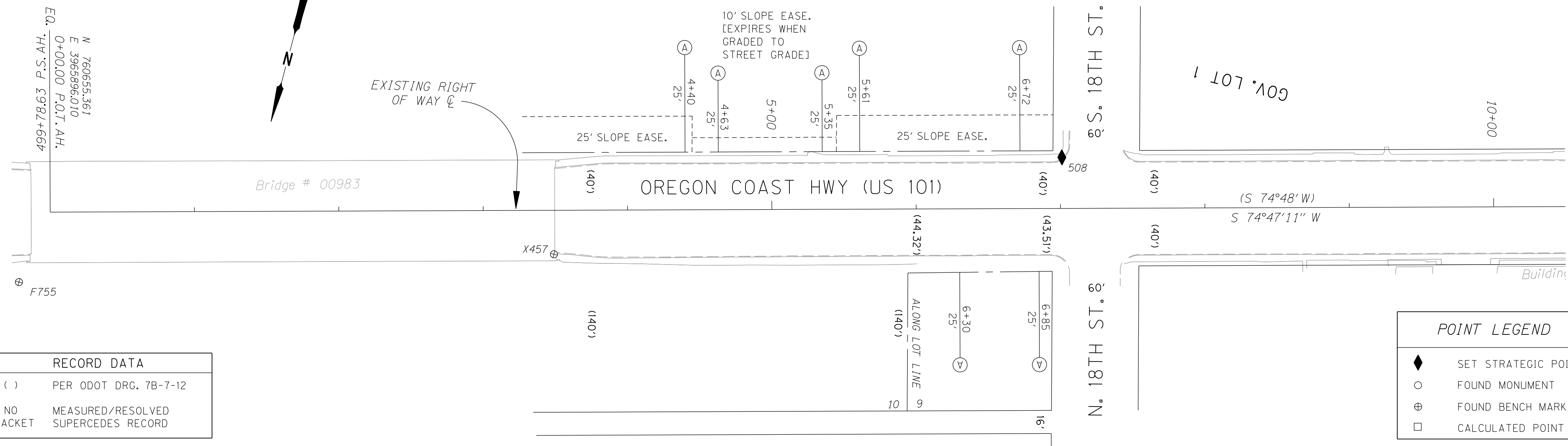
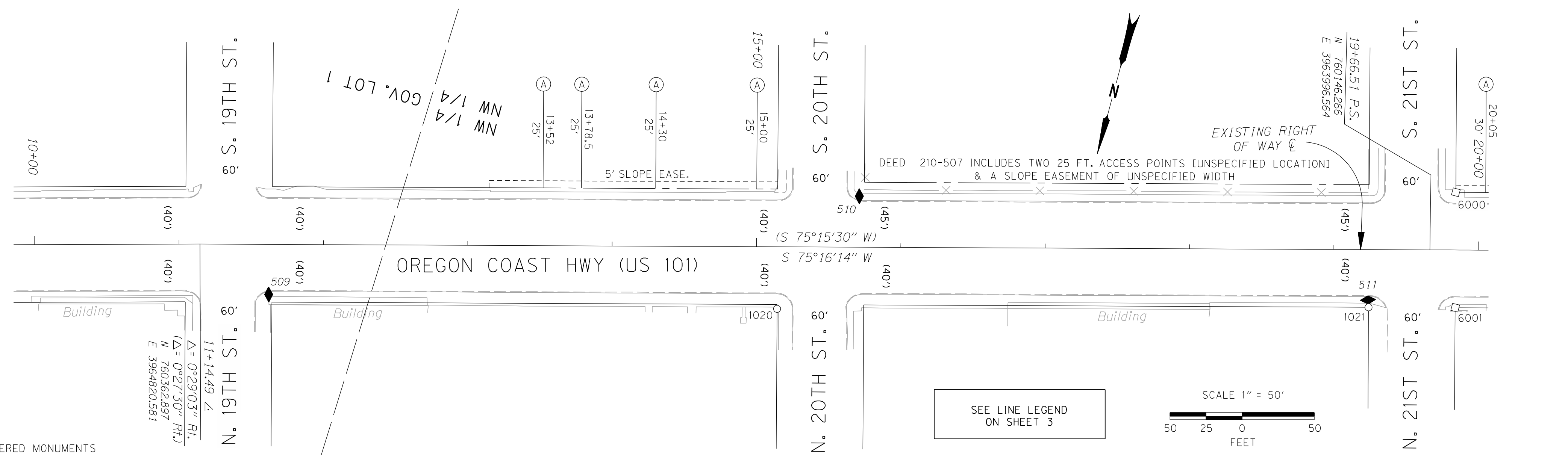


SEC. 3, T. 22 S., R. 12 W., W.M.



RECORD DATA	
()	PER ODOT DRG. 7B-7-12
NO BRACKET	MEASURED/RESOLVED SUPERCEDES RECORD

POINT LEGEND	
◆	SET STRATEGIC POINT
○	FOUND MONUMENT
⊕	FOUND BENCH MARK
□	CALCULATED POINT



RECOVERED MONUMENTS & CALCULATED POINTS

PT. NO.	LDP NORTHING	LDP EASTING	ELEV.	STATION	OFFSET (- IS LT.)	DATE	DESCRIPTION	REFERENCE
1020	760302.798	3964422.813		15+14.46	43.01	8/11/09	FD. 1/2" I.D. PIPE 0.3 FT. BELOW SURFACE GOOD CONDITION	M26-27
1021	760195.698	3964027.269		19+24.24	40.00	8/11/09	FD. 1/2" I.D. PIPE 0.8 FT. BELOW SURFACE GOOD CONDITION	
6000	760103.052	3963989.509		19+84.32	-40.00		CALCULATED SW CORNER OF 21ST ST. & US101	
6001	760180.442	3963969.240		19+84.24	40.00		CALCULATED NW CORNER OF 21ST ST. & US101	
CONTROL MONUMENTS								
PT. NO.	LDP NORTHING	LDP EASTING	ELEV.	STATION	OFFSET (- IS LT.)	DATE	DESCRIPTION	REFERENCE
508	760437.195	3965228.863	54.09	7+01.02	-35.45	5/7/2007	SET 1" BRASS PLUG STAMPED "ODOT CONTROL 508" FLUSH IN CONC. SIDEWALK	
509	760384.397	3964765.571	69.36	11+62.22	34.78	5/7/2007	SET 1" BRASS PLUG STAMPED "ODOT CONTROL 509" FLUSH IN CONC. SIDEWALK	
510	760212.662	3964387.955	68.20	15+71.09	-35.30	5/7/2007	SET 1" BRASS PLUG STAMPED "ODOT CONTROL 510" FLUSH IN CONC. SIDEWALK	
511	760190.861	3964029.016	67.28	19+23.78	34.88	5/7/2007	SET 1" BRASS PLUG STAMPED "ODOT CONTROL 511" FLUSH IN CONC. SIDEWALK	
X457	760593.208	3965551.356	37.83	3+48.89	30.47	5/3/2007	FD. 3" BRASS DISK STAMPED "STATE HIGHWAY DEPARTMENT BM NO. X457 ELEVATION FEET 1954" IN WEST END OF NORTH CONC. WALKWAY OF BRIDGE	ODOT 1954
F755	760707.792	3965904.335	13.27			5/3/2007	FD. 1/2" STAINLESS STEEL ROD HAD THROUGH A 5" LOGO CAP STAMPED "F755 1988" (RECORD NAVD 88 ELEVATION OF 13.40 IS BAD)	NGS 1988

SI FEET

OREGON DEPARTMENT OF TRANSPORTATION
 CONTROL, RECOVERY, RETRACEMENT AND
 RIGHT OF WAY BOUNDARY MONUMENTATION MAP
 US101: REEDSPORT TO WINCHESTER BAY PAVING
 OREGON COAST HIGHWAY NO. 9, US101, M.P. 211.41 - 215.77
 DOUGLAS COUNTY
 FILE: 13769RW.DGN MODEL: RWM

FOR ODOT REGION 3
 3500 NW STEWART PKWY.
 ROSEBURG, OR. 97470

JUNE 29, 2011
 SCALE: 1" = 50'
 SHEET 4 OF 6