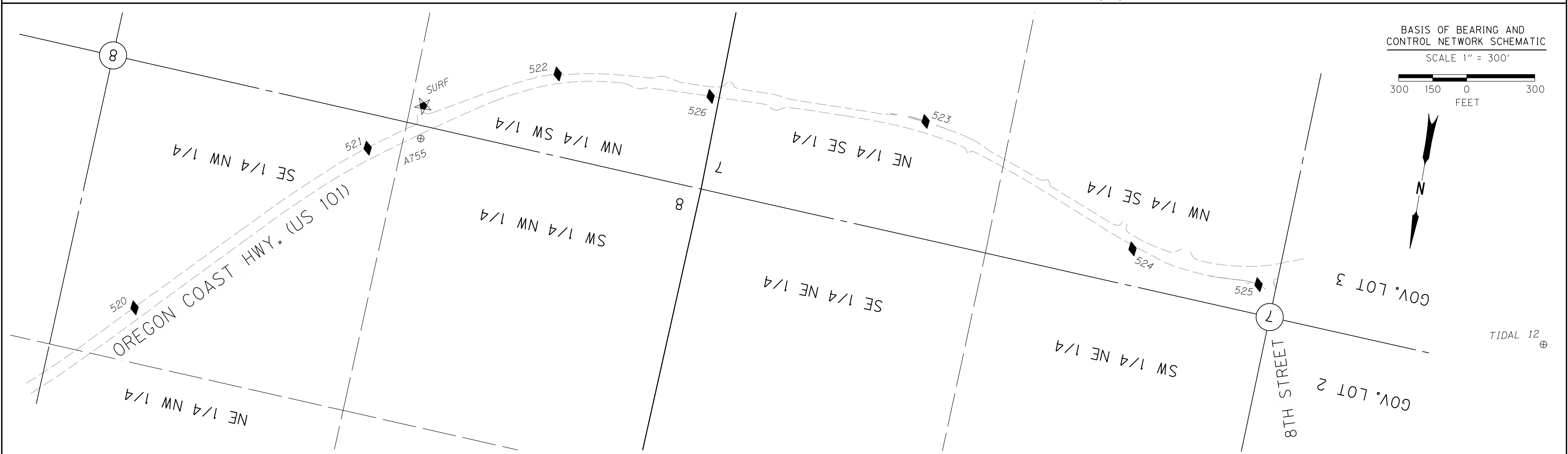
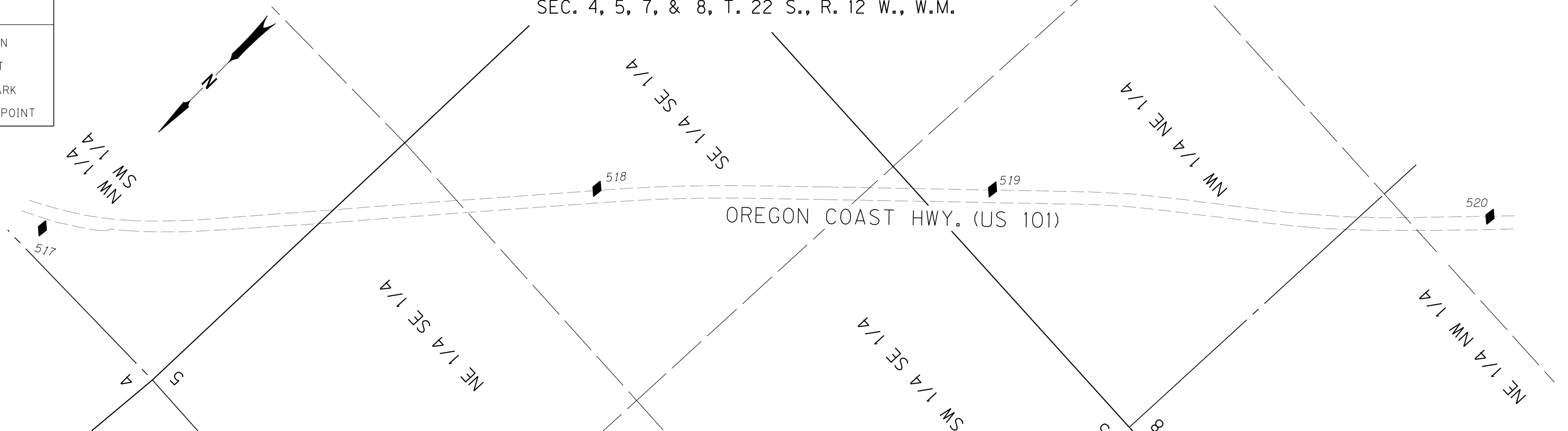


POINT LEGEND

- ★ SET GPS STATION
- FOUND MONUMENT
- ⊕ FOUND BENCH MARK
- ◆ SET STRATEGIC POINT

SEC. 4, 5, 7, & 8, T. 22 S., R. 12 W., W.M.



BASIS OF BEARING AND CONTROL NETWORK SCHEMATIC  
SCALE 1" = 300'  
300 150 0 300  
FEET

CONTROL MONUMENTS NOT SHOWN ON INDIVIDUAL SHEETS

NGS = NATIONAL GEODETIC SURVEY, USGS = UNITED STATES COAST AND GEODETIC SURVEY

PT. NO.	LDP NORTHING	LDP EASTING	ELEV.	STATION	OFFSET (- IS LT.)	DATE	DESCRIPTION	REFERENCE
517	758213.705	3958561.101				5/7/2007	SET 3/8" I. REBAR 24" LONG 0.1 FT. BELOW SURFACE	
518	756628.563	3957192.710				5/8/2007	SET 3/8" I. REBAR 24" LONG 0.1 FT. BELOW SURFACE	
519	755574.659	3956138.957				5/8/2007	SET 3/8" I. REBAR 24" LONG 0.1 FT BELOW SURFACE	
520	754319.308	3954743.928				5/8/2007	SET PK NAIL AND WASHER STAMPED "ODOT 520" FLUSH WITH AC SURFACE	
521	753448.276	3953853.057				5/8/2007	SET PK NAIL AND WASHER STAMPED "ODOT 521" FLUSH WITH AC SURFACE	
522	752981.278	3953084.431				5/8/2007	SET 3/8" I. REBAR 24" LONG FLUSH WITH SURFACE	
523	752905.963	3951450.627				5/8/2007	SET 1" BRASS PLUG STAMPED "ODOT CONTROL 523" FLUSH IN CONC. CURB	
524	753300.671	3950454.340				5/8/2007	SET 3/8" I. REBAR 24" LONG FLUSH WITH SURFACE	
525	753359.408	3949879.729				5/8/2007	SET 1" BRASS PLUG STAMPED "ODOT CONTROL 525" FLUSH IN CONC. CURB	
526	752961.511	3952403.072				5/8/2007	SET 3/8" I. REBAR 24" LONG FLUSH WITH SURFACE	
527	761629.182	3969163.726	13.53			5/8/2007	SET 1" BRASS PLUG STAMPED "ODOT CONTROL 527" SET IN CONCRETE SIDEWALK (NOT SHOWN)	
528	761533.087	3968859.952	16.94			5/8/2007	SET 1" BRASS PLUG STAMPED "ODOT CONTROL 528" SET IN CONCRETE SIDEWALK (NOT SHOWN)	
529	762301.867	3970240.163				6/19/2007	SET 1" BRASS PLUG STAMPED "ODOT CONTROL 529" SET IN CONCRETE CURB (NOT SHOWN)	
SURF	753222.355	3953643.531	13.54			5/8/2007	SET 1" DIAM. BRASS PLUG IN TOP OF CONC. UTILITY VAULT STAMPED "ODOT CONTROL SURF"	
TIDAL12	753401.263	3948596.682				5/8/2007	FD. 3 3/4" BRASS DISK STAMPED "U.S. COAST AND GEODETIC SURVEY BENCHMARK FOR INFORMATION WRITE TO THE DIRECTOR WASHINGTON DC TIDAL12 1973" LOCATED IN THE WEST END OF THE NORTH CURB OF A BRIDGE SPANNING WINCHESTER CREEK	USGS 1973
A755	753366.297	3953629.750	22.03			5/8/2007	FD. 3 3/4" BRASS DISK STAMPED "A755 1988" NGS BENCHMARK	NGS 1988

SEE LINE LEGEND ON SHEET 3



OREGON DEPARTMENT OF TRANSPORTATION  
CONTROL, RECOVERY, RETRACEMENT AND  
RIGHT OF WAY BOUNDARY MONUMENTATION MAP  
US101: REEDSPORT TO WINCHESTER BAY PAVING  
OREGON COAST HIGHWAY NO. 9, US101, M.P. 211.41 - 215.77  
DOUGLAS COUNTY  
FILE: 13769RW.DGN MODEL: RWM

FOR ODOT REGION 3  
3500 NW. STEWART PKWY.  
ROSEBURG, OR. 97470  
JUNE 29, 2011  
SCALE: 1" = 300'  
SHEET 2 OF 6