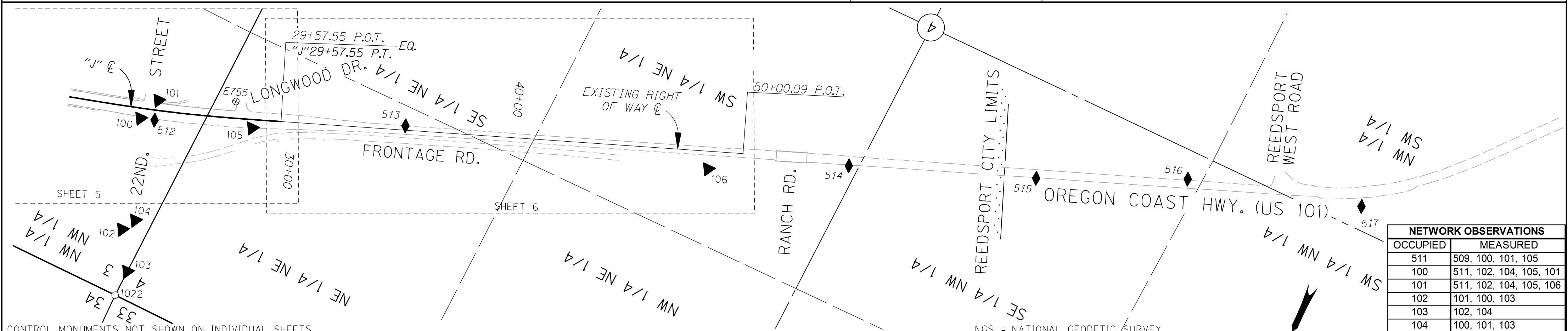


POINT LEGEND	
☆	FOUND GPS STATION
○	FOUND MONUMENT
⊕	FOUND BENCH MARK
◆	SET STRATEGIC POINT
▲	SET NETWORK POINT




NETWORK OBSERVATIONS	
OCCUPIED	MEASURED
511	509, 100, 101, 105
100	511, 102, 104, 105, 101
101	511, 102, 104, 105, 106
102	101, 100, 103
103	102, 104
104	100, 101, 103
105	100, 101, 106
106	105, 101

PT. NO.	LDP NORTHING	LDP EASTING	ELEV.	STATION	OFFSET (- IS LT.)	DATE	DESCRIPTION	REFERENCE
102	760569.379	3963494.198				8/5/2009	SET MAG NAIL AND WASHER STAMPED "ODOT 102" FLUSH IN CONC. WALK	
103	760729.138	3963396.810				8/5/2009	SET MAG NAIL AND WASHER STAMPED "ODOT 103" FLUSH IN A.C.	
104	760509.190	3963458.190				8/5/2009	SET MAG NAIL AND WASHER STAMPED "ODOT 104" FLUSH IN CONC. WALK	
502	762574.913	3968973.847	12.06			5/3/2007	SET 5/8" I. REBAR 30" LONG WITH A 1 1/2" BRASS CAP STAMPED "ODOT CONTROL 502" 0.1 FT. BELOW SURFACE	
503	762952.744	3968567.116	14.06			5/3/2007	SET 1" BRASS PLUG STAMPED "ODOT CONTROL 503" FLUSH IN CONC. CURB	
504	762329.220	3967874.000	12.68			5/3/2007	SET 1" BRASS PLUG STAMPED "ODOT CONTROL 504" FLUSH IN CONC. CURB	
505	761742.969	3967411.545	14.34			5/3/2007	SET 1" BRASS PLUG STAMPED "ODOT CONTROL 505" FLUSH IN CONC. SIDEWALK	
506	761170.172	3966866.183	11.61			5/3/2007	SET 1" BRASS PLUG STAMPED "ODOT CONTROL 506" FLUSH IN CONC. SIDEWALK	
507	760796.567	3966414.880	12.69			5/3/2007	SET 1" BRASS PLUG STAMPED "ODOT CONTROL 507" FLUSH IN CONC. SIDEWALK	
514	758986.544	3960693.106				5/7/2007	SET 3/8" I. REBAR 24" LONG 0.1 FT BELOW SURFACE	
515	758694.502	3959918.475				5/7/2007	SET 3/8" I. REBAR 24" LONG FLUSH WITH SURFACE	
516	758421.109	3959308.520				5/7/2007	SET 3/8" I. REBAR 24" LONG FLUSH WITH SURFACE	
REED	762746.008	3968620.800	11.57			5/2/2007	FD. 3 3/4" BRASS DISK ATOP 10" DIAMETER CONCRETE PEDESTAL STAMPED "OREGON PRIMARY G.P.S. STATION REED 1989 N.G.S. FOR INFORMATION CONTACT OREGON DEPT OF TRANS OR COUNTY SURVEYOR" FLUSH WITH SURFACE GOOD CONDITION	NGS 1989
G755	762130.401	3967828.236	11.14			5/7/2007	FD. 1/2" STAINLESS STEEL ROD HAD THROUGH A 5" LOGO CAP STAMPED "G755 1988" (NAVD 88 DATUM)	NGS 1988

RECOVERED MONUMENTS NOT SHOWN ON INDIVIDUAL SHEETS

PT. NO.	LDP NORTHING	LDP EASTING	ELEV.	STATION	OFFSET (- IS LT.)	DATE	DESCRIPTION	REFERENCE
1009	763293.670	3968888.762				5/3/07	FD. 3 1/2" BRASS DISK (CANNOT SEE ROD) STAMPED "CORP OF ENGINEERS SURVEY MARK T21S R12W 1/4 34 35 1966 DO NOT DISTURB THIS MARK" FLUSH WITH SURFACE GOOD CONDITION	CS 61/30
1022	760846.201	3963401.518				8/11/09	FD. 1 1/4" PIPE WITH 2 1/2" BRASS CAP STAMPED "COUNTY SURVEYORS OFFICE 1967 T21S R12W S33 S34 S4 S3 T22S" ATOP 12" DIA. CONC. PEDESTAL CAP 0.2 FT. ABOVE CONC. AND CONC. FLUSH WITH SURFACE GOOD CONDITION.	DOUG. CO. 1967


**OREGON DEPARTMENT OF TRANSPORTATION**  
 CONTROL, RECOVERY, RETRACEMENT AND  
 RIGHT OF WAY BOUNDARY MONUMENTATION MAP  
 US101: REEDSPORT TO WINCHESTER BAY PAVING  
 OREGON COAST HIGHWAY NO. 9, US101, M.P. 211.41 - 215.77  
 DOUGLAS COUNTY  
 FILE: I3769RW.DGN MODEL: RWM  
 FOR ODOT REGION 3  
 3500 NW STEWART PKWY.  
 ROSEBURG, OR. 97470  
 JUNE 29, 2011  
 SCALE: 1" = 300'  
 SHEET 1 OF 6