



SE 1/4 OF SECTION 32 AND IN THE SW 1/4 OF SECTION 33, T20S, R12W, WILLAMETTE MERIDIAN, AND LOCATED IN THE NW 1/4 OF SECTION 4, T21S, R12W, WILLAMETTE MERIDIAN, DOUGLAS COUNTY

FILED
 Date: 3/4/2001 By: JP
 This survey consists of:
 Map: ST Hwy 101-007
 Narrative:
 Corner Rpt:
 DOUGLAS COUNTY SURVEYOR

SURVEY NARRATIVE

THE PURPOSE OF THIS SURVEY WAS TO MONUMENT NEW RIGHT OF WAY PURCHASED FOR AN OREGON DEPARTMENT OF TRANSPORTATION (ODOT) PROJECT CALLED "M.P. 204.7 SLIDE SECTION" ON THE OREGON COAST HIGHWAY 101 IN DOUGLAS COUNTY. THE SURVEY WAS CONDUCTED BY AN ODOT CREW FROM NOVEMBER 14 TO NOVEMBER 17, 2000. THE ORIGINAL NOTES ARE ARCHIVED IN SALEM AS BOOK NO. 3736.

THE ORIGINAL CONTROL, RECOVERY, AND RETRACEMENT FOR THIS PROJECT ARE ON FILE AT THE DOUGLAS COUNTY SURVEYOR'S OFFICE AS MAP #M129-38 FILED IN APRIL OF 1999. ONLY POINT NOS. 2, 3, 4, 5, 10, 11, AND 12 WERE FOUND, BUT SOME HAD BEEN DISTURBED. WE HELD POINTS 2 AND 3 (WHICH HAD NOT BEEN DISTURBED) FOR THE BASIS OF BEARING. THE REMAINING FOUND MONUMENTS WERE RESURVEYED AND NEW COORDINATES WERE ASSIGNED TO THEM. TWO NEW POINTS (6B AND 7B) WERE ADDED TO THIS NETWORK. IN ADDITION TO THIS NEW NETWORK, ANOTHER SECONDARY NETWORK WAS RAN IN ORDER TO RESURVEY AUXILIARY POINT #500. IN THIS NETWORK A NEW AUXILIARY POINT, 550, WAS SET. POINT NOS. 5, 7B, 10, AND 11 WERE HELD WHEN THE SECONDARY NETWORK WAS RAN. FROM ALL THESE CONTROL MONUMENTS THE NEW RIGHT OF WAY BOUNDARY POINTS WERE SET AND THE NEW CENTERLINE WAS REFERENCED. THE CENTERLINE USED IS BASED ON ODOT DRG. NO. 10B-13-11. REFER ALSO TO ODOT R/W FILE 6790-001 FOR THE DEED DESCRIPTION OF THE NEW RIGHT OF WAY PURCHASE.

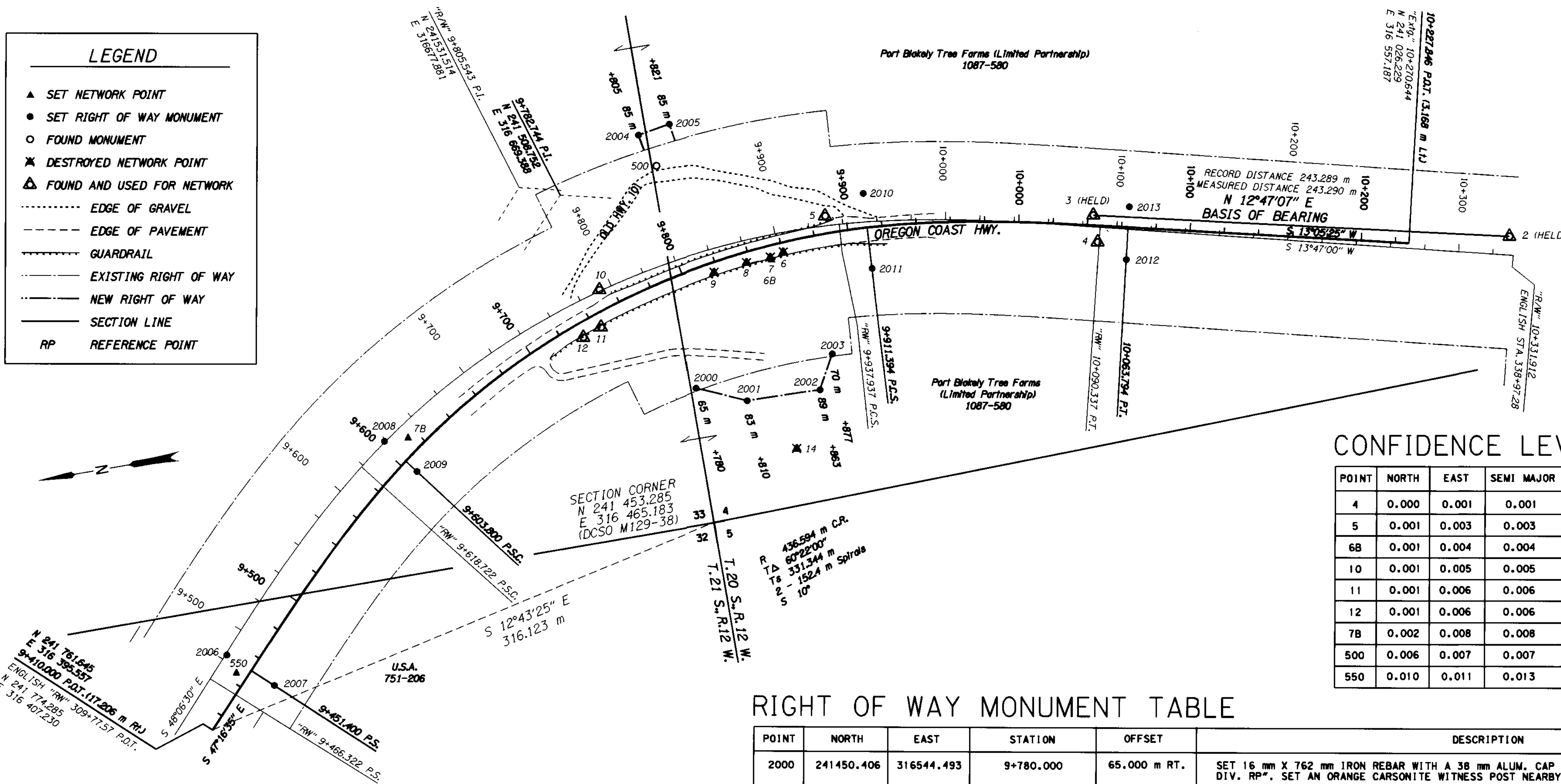
COORDINATES ARE ON A LOCAL DATUM PLANE DERIVED FROM THE OREGON STATE PLANE COORDINATE SYSTEM, SOUTH ZONE, 1927 DATUM. TO CONVERT METRIC COORDINATES TO ENGLISH DIVIDE BY 0.30480061 (OR, 1 METER = 3937 U.S. FEET/1200).

A LEICA TCA1800 TOTAL STATION (SERIAL #418939) WAS USED FOR THIS SURVEY. IT HAS A STANDARD ANGULAR ERROR OF +/- ONE SECOND AND A STANDARD DISTANCE ERROR OF +/- 2 MM, +/- 2 PPM.

THE LEAST SQUARES ADJUSTMENT OF THE NETWORK PRODUCED: (1) ANGULAR RESIDUALS (THE AMOUNT THE FIELD OBSERVED ANGLES WERE CHANGED DUE TO THE ADJUSTMENT), 94% WHICH WERE WITHIN 3 SECONDS AND 100% WERE WITHIN 4 SECONDS. (2) DISTANCE RESIDUALS (THE AMOUNT THE FIELD OBSERVED DISTANCES WERE CHANGED DUE TO THE ADJUSTMENT), 100% WHICH WERE WITHIN 2 MM. THERE IS A 95% PROBABILITY THE FINAL POSITIONS OF THE CONTROL POINTS ARE WITHIN THE ERROR ELLIPSES AS SHOWN ON THE "CONFIDENCE LEVEL LIMITS" TABLE.

LEGEND

- ▲ SET NETWORK POINT
- SET RIGHT OF WAY MONUMENT
- FOUND MONUMENT
- ✱ DESTROYED NETWORK POINT
- △ FOUND AND USED FOR NETWORK
- EDGE OF GRAVEL
- EDGE OF PAVEMENT
- GUARDRAIL
- EXISTING RIGHT OF WAY
- NEW RIGHT OF WAY
- SECTION LINE
- RP REFERENCE POINT



CONFIDENCE LEVEL LIMITS

POINT	NORTH	EAST	SEMI MAJOR	SEMI MINOR	ORIENTATION
4	0.000	0.001	0.001	0.000	N 88°34'43" E
5	0.001	0.003	0.003	0.001	S 69°54'09" E
6B	0.001	0.004	0.004	0.001	S 85°59'57" E
10	0.001	0.005	0.005	0.001	S 88°05'36" E
11	0.001	0.006	0.006	0.001	N 87°20'03" E
12	0.001	0.006	0.006	0.001	N 86°39'01" E
7B	0.002	0.008	0.008	0.002	N 80°22'20" E
500	0.006	0.007	0.007	0.006	S 55°36'31" E
550	0.010	0.011	0.013	0.007	N 45°50'44" E

NETWORK OBSERVATIONS

AT	TO
3	2, 4, 5
4	2, 3, 5
5	2, 6B, 3, 4, 10, 2, 11, 12
6B	3, 5, 10, 11, 12
10	5, 11, 12, 7B
11	5, 6B, 10, 7B
12	5, 6B, 10, 7B
7B	10, 11, 12

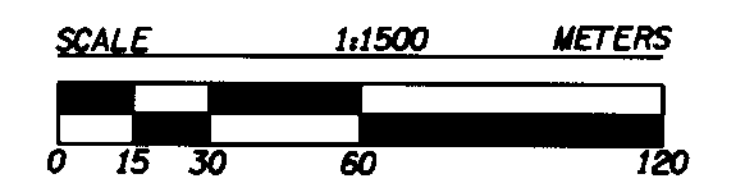
CONTROL NETWORK AND FOUND MONUMENT TABLE

POINT	NORTH	EAST	DESCRIPTION
2	240967.691	316550.923	FOUND 38 mm ALUM. CAP STAMPED "ODOT HORIZ. CONTROL 2" FLUSH WITH SURFACE IN GOOD CONDITION.
3	241204.948	316604.762	FOUND 38 mm ALUM. CAP STAMPED "ODOT HORIZ. CONTROL 3" 100 mm BELOW SURFACE IN GOOD CONDITION.
4	241204.952	316588.919	FOUND 38 mm ALUM. CAP STAMPED "ODOT HORIZ. CONTROL 4" FLUSH WITH SURFACE IN GOOD CONDITION. CARSONITE WITNESS POST NEARBY.
5	241359.080	316630.898	FOUND 38 mm ALUM. CAP STAMPED "ODOT HORIZ. CONTROL 5" 20 mm BELOW SURFACE IN FAIR CONDITION. CARSONITE WITNESS POST NEARBY.
6B	241394.201	316610.806	SET HUB AND TACK.
10	241495.690	316611.097	FOUND 38 mm ALUM. CAP STAMPED "ODOT HORIZ. CONTROL 10" FLUSH WITH SURFACE IN GOOD CONDITION. CARSONITE WITNESS POST NEARBY.
11	241498.495	316589.364	FOUND 38 mm ALUM. CAP STAMPED "ODOT HORIZ. CONTROL 11" 20 mm BELOW SURFACE IN GOOD CONDITION. CARSONITE WITNESS POST NEARBY.
12	241509.699	316585.202	FOUND 38 mm ALUM. CAP STAMPED "ODOT HORIZ. CONTROL 12" FLUSH WITH SURFACE IN GOOD CONDITION. CARSONITE WITNESS POST NEARBY.
7B	241620.133	316545.197	SET HUB AND TACK.
500	241450.665	316676.876	FOUND 38 mm ALUM. CAP STAMPED "ODOT HORIZ. CONTROL 500" 15 mm ABOVE SURFACE IN GOOD CONDITION. NO WITNESS POST.
550	241742.179	316426.701	SET HUB AND TACK.

RIGHT OF WAY MONUMENT TABLE

POINT	NORTH	EAST	STATION	OFFSET	DESCRIPTION
2000	241450.406	316544.493	9+780.000	65.000 m RT.	SET 16 mm X 762 mm IRON REBAR WITH A 38 mm ALUM. CAP STAMPED "OREG. STATE HWY. DIV. RP". SET AN ORANGE CARSONITE WITNESS POST NEARBY.
2001	241422.260	316532.166	9+810.000	83.000 m RT.	SET 16 mm X 762 mm IRON REBAR WITH A 38 mm ALUM. CAP STAMPED "O.D.O.T. RIGHT OF WAY". SET A WHITE CARSONITE WITNESS POST NEARBY.
2002	241379.317	316531.209	9+863.000	89.000 m RT.	SET 16 mm X 762 mm IRON REBAR WITH A 38 mm ALUM. CAP STAMPED "O.D.O.T. RIGHT OF WAY". SET A WHITE CARSONITE WITNESS POST NEARBY.
2003	241368.653	316550.659	9+877.000	70.000 m RT.	SET 16 mm X 762 mm IRON REBAR WITH A 38 mm ALUM. CAP STAMPED "OREG. STATE HWY. DIV. RP". SET AN ORANGE CARSONITE WITNESS POST NEARBY.
2004	241457.929	316696.410	9+805.000	85.000 m LT.	SET 16 mm X 762 mm IRON REBAR WITH A 38 mm ALUM. CAP STAMPED "O.D.O.T. RIGHT OF WAY". SET A WHITE CARSONITE WITNESS POST NEARBY.
2005	241439.095	316699.670	9+821.000	85.000 m LT.	SET 16 mm X 762 mm IRON REBAR WITH A 38 mm ALUM. CAP STAMPED "O.D.O.T. RIGHT OF WAY". SET A WHITE CARSONITE WITNESS POST NEARBY.
2006	241746.045	316437.504	9+451.400 P.S.	17.000 m LT.	SET 16 mm X 762 mm IRON REBAR WITH A 38 mm ALUM. CAP STAMPED "OREG. STATE HWY. DIV. RP". SET AN ORANGE CARSONITE WITNESS POST NEARBY.
2007	241721.802	316415.115	9+451.400 P.S.	16.000 m RT.	SET 16 mm X 762 mm IRON REBAR WITH A 38 mm ALUM. CAP STAMPED "OREG. STATE HWY. DIV. RP". SET AN ORANGE CARSONITE WITNESS POST NEARBY.
2008	241634.270	316545.113	9+603.800 P.S.C.	17.000 m LT.	SET 16 mm X 762 mm IRON REBAR WITH A 38 mm ALUM. CAP STAMPED "OREG. STATE HWY. DIV. RP". SET AN ORANGE CARSONITE WITNESS POST NEARBY.
2009	241618.523	316524.424	9+603.800 P.S.C.	9.000 m RT.	SET 16 mm X 762 mm IRON REBAR WITH A 38 mm ALUM. CAP STAMPED "OREG. STATE HWY. DIV. RP". SET AN ORANGE CARSONITE WITNESS POST NEARBY.
2010	241334.932	316640.108	9+911.394 P.C.S.	20.000 m LT.	SET 16 mm X 762 mm IRON REBAR WITH A 38 mm ALUM. CAP STAMPED "OREG. STATE HWY. DIV. RP". SET AN ORANGE CARSONITE WITNESS POST NEARBY.
2011	241337.304	316596.172	9+911.394 P.C.S.	24.000 m RT.	SET 16 mm X 762 mm IRON REBAR WITH A 38 mm ALUM. CAP STAMPED "OREG. STATE HWY. DIV. RP". SET AN ORANGE CARSONITE WITNESS POST NEARBY.
2012	241190.321	316575.837	10+063.794 P.T.	19.000 m RT.	SET 16 mm X 762 mm IRON REBAR WITH A 38 mm ALUM. CAP STAMPED "OREG. STATE HWY. DIV. RP". SET AN ORANGE CARSONITE WITNESS POST NEARBY.
2013	241183.300	316606.031	10+063.794 P.T.	12.000 m LT.	SET 16 mm X 762 mm IRON REBAR WITH A 38 mm ALUM. CAP STAMPED "OREG. STATE HWY. DIV. RP". SET AN ORANGE CARSONITE WITNESS POST NEARBY.

REGISTERED PROFESSIONAL LAND SURVEYOR
 Christine Y. Blawie
 OREGON JULY 18, 1984
 CHRISTINE Y. BLAWIE
 2000
 EXPIRES: DEC. 31, 2001



1 METER = 3937 U.S. FEET / 1200
 TO CONVERT A METRIC DISTANCE DIVIDE BY 0.30480061

OREGON DEPARTMENT OF TRANSPORTATION
 HORIZONTAL CONTROL AND RIGHT OF WAY MONUMENTATION MAP
 M.P. 204.7 SLIDE SECTION
 DOUGLAS COUNTY OREGON COAST HIGHWAY
 ODOT
 3500 STEWART PARKWAY, SUITE 140
 ROSEBURG, OREGON 97470