

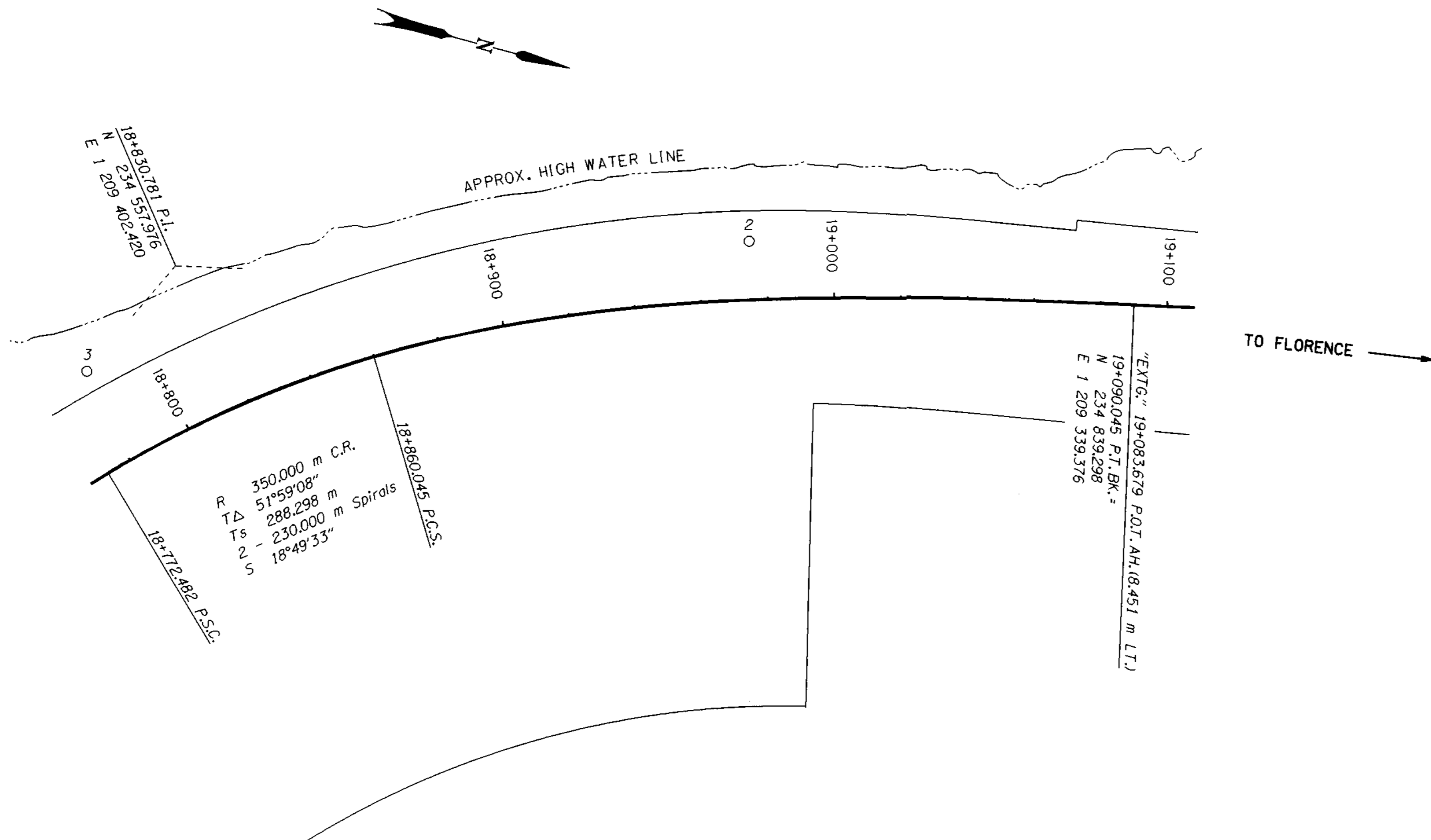
NE 1/4 SEC. 27, T. 21 S., R. 12 W., W. M.

FILED

Date: 3/6/2001 By: JP
 This survey consists of: 5 SHEETS
 Map: ST. HWY. 101-006E
 Narrative: _____
 Corner Rpt: _____

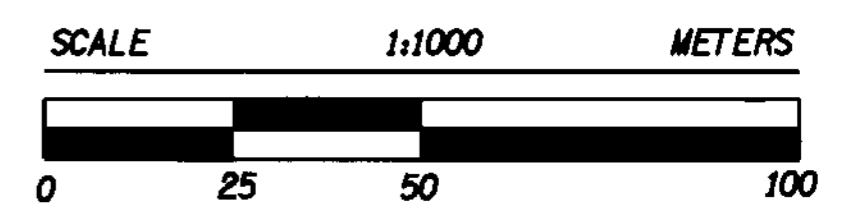
DOUGLAS COUNTY
SURVEYOR

LEGEND	
○	FOUND MONUMENT
—	EXTG. RIGHT OF WAY
- - -	EDGE OF RIVER



REGISTERED
PROFESSIONAL
LAND SURVEYOR

Christine V. Blevins
 OREGON
 JULY 19, 1994
 CHRISTINE V. BLEVINS
 2669
 EXPIRES: DEC. 31, 2001



TO CONVERT A METRIC DISTANCE DIVIDE BY 0.3048

NETWORK POINT COORDINATE TABLE

POINT ID	LDP NORTHING	LDP EASTING	DESCRIPTION
2	234722.688	1209350.623	FOUND 1 1/2" ALUM. CAP STAMPED "OREGON STATE HWY. DIV. SR-2 1990" FLUSH WITH SURFACE IN GOOD CONDITION.
3	234540.302	1209440.075	FOUND 1 1/2" ALUM. CAP STAMPED "OREGON STATE HWY. DIV. SR-3 1990" FLUSH WITH SURFACE IN GOOD CONDITION.

OREGON DEPARTMENT OF TRANSPORTATION
 RIGHT OF WAY
 MONUMENTATION MAP
 SMITH RIVER BRIDGE, STAGE 1 SECTION
 OREGON COAST HIGHWAY (HWY. 101)
 DOUGLAS COUNTY
 3500 STEWART PARKWAY, SUITE 140
 ROSEBURG, OREGON 97470
 JANUARY 30, 2001
 KEY #05358