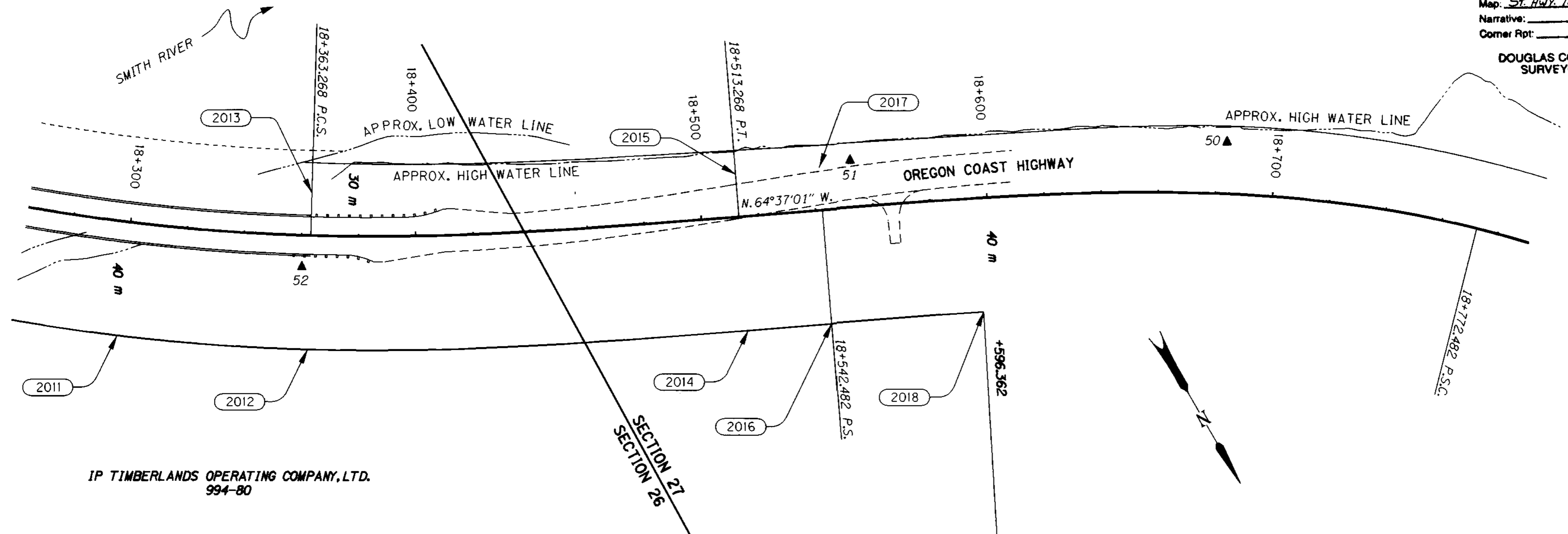


NW 1/4 SEC. 26 AND NE 1/4 SEC. 27, T. 21 S., R. 12 W., W. M.

FILED  
 Date: 3/6/2001 By: JP  
 This survey consists of: 5 SHEETS  
 Map: ST. HWY. 101-006D  
 Narrative:  
 Corner Rpt:  
 DOUGLAS COUNTY SURVEYOR



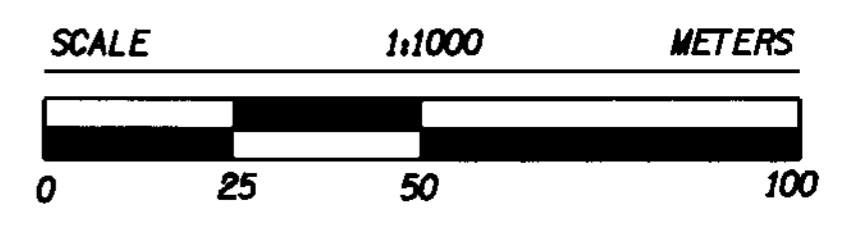
IP TIMBERLANDS OPERATING COMPANY, LTD.  
 994-80

R/W POINT LIST (NO MONUMENTS SET)

POINT ID	LDP NORTHING	LDP EASTING	STATION	OFFSET	DESCRIPTION
2011	234349.029	1209898.582	18+300.000	40.000 m RT.	RIGHT OF WAY POINT
2012	234386.753	1209843.285	18+363.268 P.C.S.	40.000 m RT.	RIGHT OF WAY POINT
2013	234339.936	1209814.420	18+363.268 P.C.S.	15.000 m LT.	REFERENCE POINT
2014	234458.008	1209706.427	18+513.268 P.T.	40.000 m RT.	RIGHT OF WAY POINT
2015	234408.317	1209682.850	18+513.268 P.T.	15.000 m LT.	REFERENCE POINT
2016	234470.531	1209680.033	18+542.482 P.S.	40.000 m RT.	RIGHT OF WAY POINT
2017	234420.840	1209656.457	18+542.482 P.S.	15.000 m LT.	REFERENCE POINT
2018	234493.604	1209632.144	18+596.362	40.000 m RT.	RIGHT OF WAY POINT

LEGEND	
▲	SET NETWORK MONUMENT
---	EDGE OF PAVEMENT
—	CONCRETE BARRIER
—+—+—+—	GUARDRAIL
---	EDGE OF RIVER
---	EXTG. RIGHT OF WAY
---	NEW RIGHT OF WAY
---	PERMANENT EASEMENT
—	SECTION LINE
○	RIGHT OF WAY POINT NO.

REGISTERED PROFESSIONAL LAND SURVEYOR  
 Christine V. Blevins  
 OREGON JULY 19, 1994  
 CHRISTINE V. BLEVINS 2669  
 EXPIRES: DEC. 31, 2001



TO CONVERT A METRIC DISTANCE DIVIDE BY 0.3048

NETWORK POINT COORDINATE TABLE

POINT ID	LDP NORTHING	LDP EASTING	DESCRIPTION
50	234484.104	1209528.033	SET 16 mm X 762 mm IRON REBAR WITH A 38 mm BRASS CAP STAMPED "O.D.O.T. CONTROL 50" 100 mm BELOW SURFACE STABILIZED WITH 300 mm DIAMETER X 300 mm DEEP CONC.
51	234423.673	1209645.783	SET 16 mm X 762 mm IRON REBAR WITH A 38 mm BRASS CAP STAMPED "O.D.O.T. CONTROL 51" 200 mm BELOW SURFACE STABILIZED WITH 300 mm DIAMETER X 300 mm DEEP CONC.
52	234360.241	1209830.193	SET 16 mm X 762 mm IRON REBAR WITH A 38 mm BRASS CAP STAMPED "O.D.O.T. CONTROL 52" 100 mm BELOW SURFACE STABILIZED WITH 300 mm DIAMETER X 300 mm DEEP CONC.

OREGON DEPARTMENT OF TRANSPORTATION  
 RIGHT OF WAY MONUMENTATION MAP  
 SMITH RIVER BRIDGE, STAGE 1 SECTION  
 OREGON COAST HIGHWAY (HWY. 101)  
 DOUGLAS COUNTY  
 3500 STEWART PARKWAY, SUITE 140  
 ROSEBURG, OREGON 97470  
 JANUARY 30, 2001  
 KEY #05358  
 SHEET 4 OF 5