

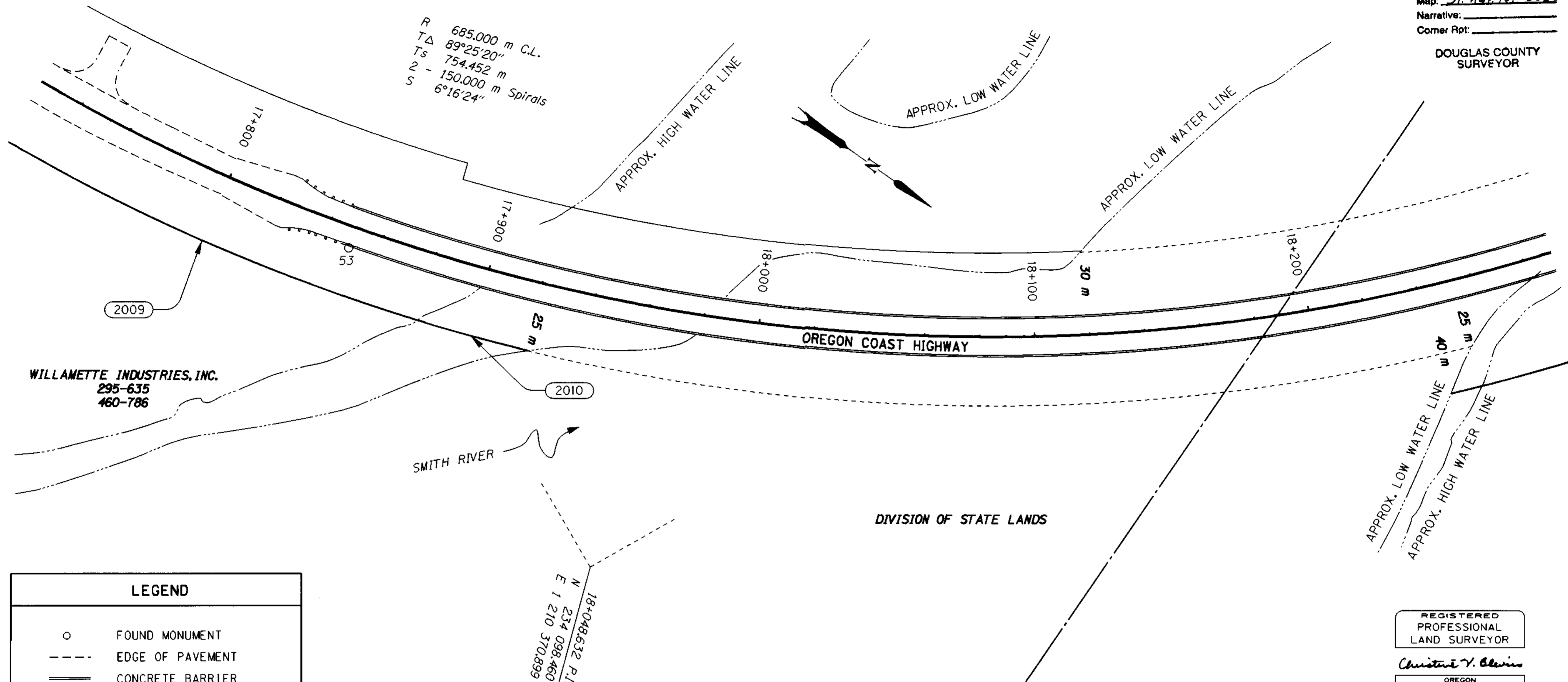
SW 1/4 SEC. 26, T. 21 S., R. 12 W., W. M.

FILED

Date: 3/6/2001 By: JP
 This survey consists of: 5 SHEETS
 Map: ST. HWY. 101-006C
 Narrative: _____
 Corner Rpt: _____

DOUGLAS COUNTY
 SURVEYOR

R 685.000 m C.L.
 TΔ 89°25'20"
 Ts 754.452 m
 2 - 150.000 m Spirals
 S 6°16'24"



WILLAMETTE INDUSTRIES, INC.
 295-635
 460-786

DIVISION OF STATE LANDS

18+048.632 P.I.
 N 234 098.460
 E 1 210 370.899

REGISTERED
 PROFESSIONAL
 LAND SURVEYOR

Christine V. Blevis

OREGON
 JULY 19, 1994
 CHRISTINE V. BLEVINS
 2669

EXPIRES: DEC. 31, 2001

LEGEND	
○	FOUND MONUMENT
---	EDGE OF PAVEMENT
====	CONCRETE BARRIER
++++	GUARDRAIL
-----	EDGE OF RIVER
---	EXTG. RIGHT OF WAY
---	NEW RIGHT OF WAY
---	PERMANENT EASEMENT
---	QUARTER SECTION LINE
○	RIGHT OF WAY POINT NO.

R/W POINT LIST (NO MONUMENTS SET)

POINT ID	LDP NORTHING	LDP EASTING	STATION	OFFSET	DESCRIPTION
2009	233907.895	1210159.195	17+800.000	25.000 m RT.	RIGHT OF WAY POINT
2010	234007.729	1210131.673	17+900.000	25.000 m RT.	RIGHT OF WAY POINT

SCALE 1:1000 METERS



TO CONVERT A METRIC DISTANCE DIVIDE BY 0.3048

NETWORK POINT COORDINATE TABLE

POINT ID	LDP NORTHING	LDP EASTING	DESCRIPTION
53	233953.143	1210130.894	FOUND 80 mm BRASS DISK SET IN CONC. BY ODOT CONSTRUCTION CREW. STAMPED "OREGON DEPARTMENT OF TRANSPORTATION CREW 3811 CONTROL POINT" SET IN CONC. FLUSH WITH SURFACE. WE STAMPED "53" ON THE DISK AT THIS TIME.
419	234163.719	1210468.073	FOUND 80 mm BRASS DISK SET IN CONC. BY ODOT CONSTRUCTION CREW. STAMPED "OREGON DEPARTMENT OF TRANSPORTATION CREW 3811 CONTROL POINT 419" FLUSH WITH SURFACE IN GOOD CONDITION. (SEE SHEET 1 FOR LOCATION)
420	234256.985	1210317.313	FOUND 80 mm BRASS DISK SET IN CONC. BY ODOT CONSTRUCTION CREW. STAMPED "OREGON DEPARTMENT OF TRANSPORTATION CREW 3811 CONTROL POINT 420" FLUSH WITH SURFACE IN GOOD CONDITION. (SEE SHEET 1 FOR LOCATION)

OREGON DEPARTMENT OF TRANSPORTATION

RIGHT OF WAY
 MONUMENTATION MAP

SMITH RIVER BRIDGE, STAGE 1 SECTION
 OREGON COAST HIGHWAY (HWY. 101)
 DOUGLAS COUNTY

3500 STEWART PARKWAY, SUITE 140
 ROSEBURG, OREGON 97470

JANUARY 30, 2001
 KEY #05358

SHEET 3 OF 5

ST. HWY. 101-006C