

NW 1/4 SEC. 35 AND SW 1/4 SEC. 26, T. 21 S., R. 12 W., W. M.

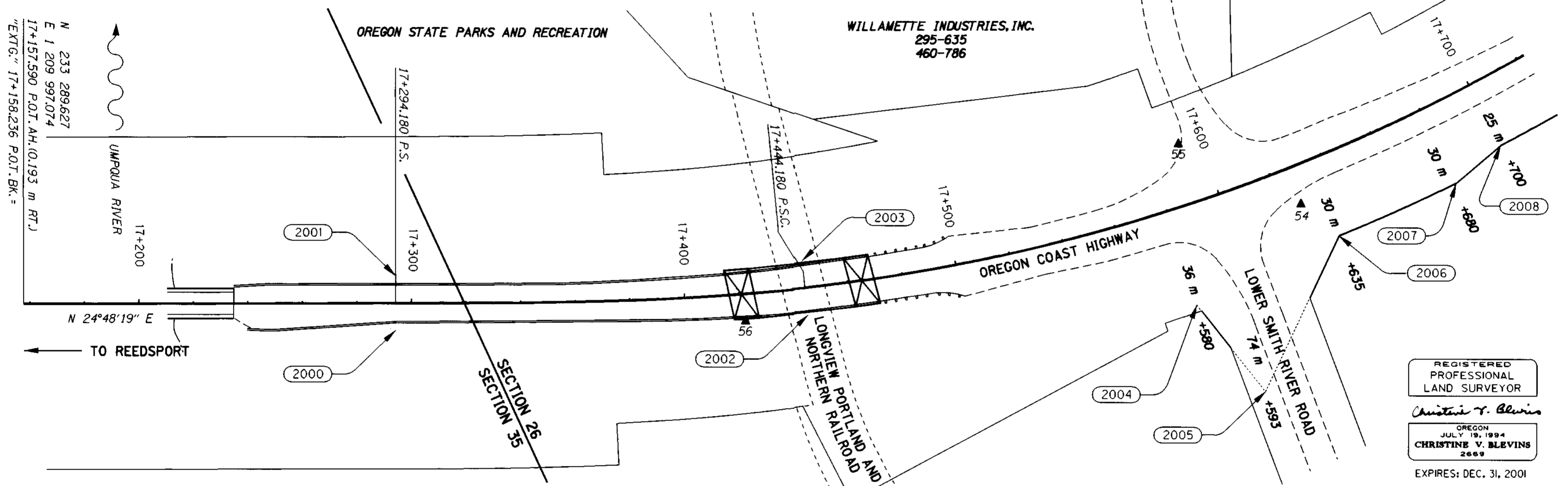
FILED

Date: 3/6/2001 By: JP
 This survey consists of: 5 SHEETS
 Map: St. Hwy. 101-006B
 Narrative: _____
 Corner Rpt: _____

DOUGLAS COUNTY
 SURVEYOR

NETWORK POINT COORDINATE TABLE

POINT ID	LDP NORTHING	LDP EASTING	DESCRIPTION
54	233729.954	1210160.169	SET 16 mm X 762 mm IRON REBAR WITH A 38 mm BRASS CAP STAMPED "O.D.O.T. CONTROL 54" 50 mm BELOW SURFACE, STABILIZED WITH 300 mm DIAMETER X 300 mm DEEP CONC.
55	233698.377	1210121.272	SET 16 mm X 762 mm IRON REBAR WITH A 38 mm BRASS CAP STAMPED "O.D.O.T. CONTROL 55" FLUSH WITH SURFACE, STABILIZED WITH 300 mm DIAMETER X 300 mm DEEP CONC.
56	233527.484	1210113.602	SET 16 mm X 762 mm IRON REBAR WITH A 38 mm BRASS CAP STAMPED "O.D.O.T. CONTROL 56" 50 mm BELOW SURFACE, STABILIZED WITH 300 mm DIAMETER X 300 mm DEEP CONC.

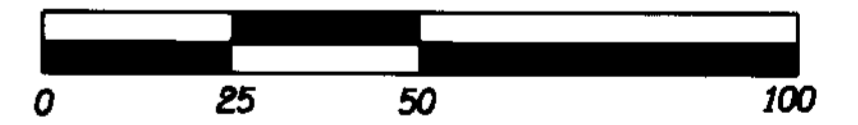


R/W POINT LIST (NO MONUMENTS SET)

POINT ID	LDP NORTHING	LDP EASTING	STATION	OFFSET	DESCRIPTION
2000	233409.420	1210063.456	17+294.180 P.S.	10.000 m RT.	REFERENCE POINT
2001	233417.810	1210045.302	17+294.180 P.S.	10.000 m LT.	REFERENCE POINT
2002	233548.729	1210121.751	17+444.180 P.S.C.	10.000 m RT.	REFERENCE POINT
2003	233555.086	1210102.787	17+444.180 P.S.C.	10.000 m LT.	REFERENCE POINT
2004	233679.614	1210178.148	17+580.000	36.000 m RT.	FALSE CALL
2005	233689.178	1210217.514	17+593.000	74.000 m RT.	FALSE CALL
2006	233737.549	1210177.069	17+635.000	30.000 m RT.	RIGHT OF WAY POINT
2007	233784.508	1210177.634	17+680.000	30.000 m RT.	RIGHT OF WAY POINT
2008	233805.120	1210171.901	17+700.000	25.000 m RT.	RIGHT OF WAY POINT

LEGEND	
	SET NETWORK MONUMENT
	EDGE OF PAVEMENT
	CONCRETE BARRIER
	GUARDRAIL
	EXTG. RIGHT OF WAY
	FALSE CALL LINE
	NEW RIGHT OF WAY
	PERMANENT EASEMENT
	SECTION LINE
	RIGHT OF WAY POINT NO.

SCALE 1:1000 METERS



TO CONVERT A METRIC DISTANCE DIVIDE BY 0.3048

OREGON DEPARTMENT OF TRANSPORTATION
 RIGHT OF WAY
 MONUMENTATION MAP
 SMITH RIVER BRIDGE, STAGE 1 SECTION
 OREGON COAST HIGHWAY (HWY. 101)
 DOUGLAS COUNTY
 3500 STEWART PARKWAY, SUITE 140
 ROSEBURG, OREGON 97470

JANUARY 30, 2001
 KEY #05358

SHEET 2 OF 5